

**PLEASE CHECK WWW.MOLEX.COM FOR LATEST PART INFORMATION**

**Part Number:** [0894001610](#)  
**Status:** **Active**  
**Description:** 2.00mm (.079") Pitch Wire-to-Board Header, Vertical, 16 Circuits, without Kinked PC Tail

**Documents:**

[3D Model](#) [Product Specification PS-87369-0001 \(PDF\)](#)  
[Drawing \(PDF\)](#) [RoHS Certificate of Compliance \(PDF\)](#)

**Agency Certification**

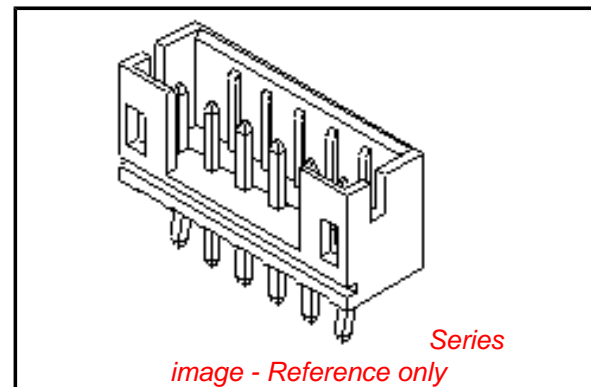
CSA LR19980

**General**

Product Family PCB Headers  
 Series [89400](#)  
 Application Wire-to-Board  
 Product Name N/A

**Physical**

Breakaway No  
 Circuits (Loaded) 16  
 Circuits (maximum) 16  
 Color - Resin Natural  
 Durability (mating cycles max) 30  
 First Mate / Last Break No  
 Flammability 94V-0  
 Glow-Wire Compliant No  
 Guide to Mating Part No  
 Keying to Mating Part None  
 Lock to Mating Part Yes  
 Mated Height (in) 0.287 In  
 Mated Height (mm) 7.30 mm  
 Material - Plating Mating Tin  
 Material - Plating Termination Tin  
 Material - Resin Nylon  
 Number of Rows 1  
 Orientation Vertical  
 PC Tail Length (in) 0.134 In  
 PC Tail Length (mm) 3.40 mm  
 PCB Locator No  
 PCB Retention None  
 PCB Thickness Recommended (in) 0.045 In  
 PCB Thickness Recommended (mm) 1.20 mm  
 Packaging Type Bag  
 Pitch - Mating Interface (in) 0.079 In  
 Pitch - Mating Interface (mm) 2.00 mm  
 Plating min: Mating (µin) 50  
 Plating min: Mating (µm) 1.27  
 Plating min: Termination (µin) 50  
 Plating min: Termination (µm) 1.27  
 Polarized to PCB No  
 Shrouded Partial  
 Stackable No  
 Temperature Range - Operating -25°C to +85°C  
 Termination Interface: Style Through Hole



**EU RoHS**

**ELV and RoHS Compliant**  
**REACH SVHC**  
 Not Reviewed  
**Halogen-Free Status**  
 Not Reviewed

**China RoHS**



**Need more information on product environmental compliance?**

Email [productcompliance@molex.com](mailto:productcompliance@molex.com)  
 For a multiple part number RoHS Certificate of Compliance, [click here](#)

Please visit the [Contact Us](#) section for any non-product compliance questions.

**Search Parts in this Series**

[89400Series](#)

**Mates With**

[87369 Crimp Housing](#)

**Electrical**

Current - Maximum per Contact

4A

Voltage - Maximum

250V

**Material Info****Reference - Drawing Numbers**

Product Specification

PS-87369-0001

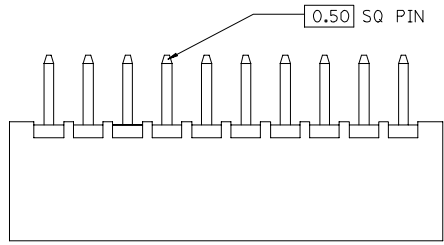
Sales Drawing

SD-89400-\*\*1\*

This document was generated on 06/08/2010

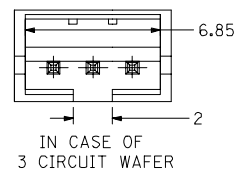
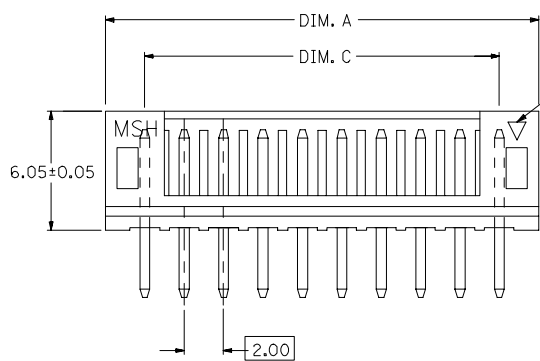
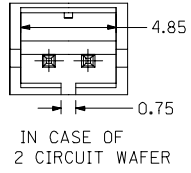
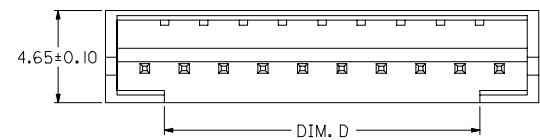
**PLEASE CHECK [WWW.MOLEX.COM](http://WWW.MOLEX.COM) FOR LATEST PART INFORMATION**

10 9 8 7 6 5 4 3 2 1



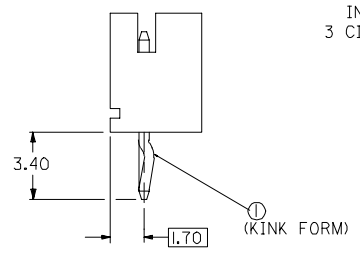
PART NO. LEGEND  
 89400 - \*\* 2 \*  
 CKT SIZE — \*\* — COLOR OPTION  
 0 - NATURAL (WHITE)  
 1 - BLACK  
 2 - RED  
 3 - YELLOW  
 4 - BLUE  
 6 - GREEN

| CIRCUITS | ORDER NO.  | DIM. C | DIM. D | DIM. A |
|----------|------------|--------|--------|--------|
| 2        | 89400-022* | 2.00   | 0.75   | 6.00   |
| 3        | 89400-032* | 4.00   | 2.00   | 8.00   |
| 4        | 89400-042* | 6.00   | 4.00   | 10.00  |
| 5        | 89400-052* | 8.00   | 6.00   | 12.00  |
| 6        | 89400-062* | 10.00  | 8.00   | 14.00  |
| 7        | 89400-072* | 12.00  | 10.00  | 16.00  |
| 8        | 89400-082* | 14.00  | 12.00  | 18.00  |
| 9        | 89400-092* | 16.00  | 14.00  | 20.00  |
| 10       | 89400-102* | 18.00  | 16.00  | 22.00  |
| 11       | 89400-112* | 20.00  | 18.00  | 24.00  |
| 12       | 89400-122* | 22.00  | 20.00  | 26.00  |
| 13       | 89400-132* | 24.00  | 22.00  | 28.00  |
| 14       | 89400-142* | 26.00  | 24.00  | 30.00  |
| 15       | 89400-152* | 28.00  | 26.00  | 32.00  |
| 16       | 89400-162* | 30.00  | 28.00  | 34.00  |

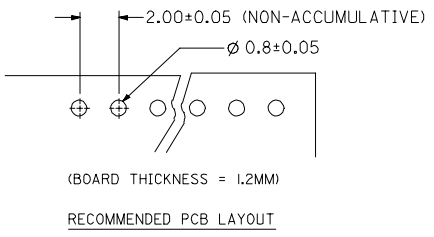


KINK TO BE APPLIED AS FOLLOW

| CKT NO.<br>CKT      | KINK TO BE APPLIED AS FOLLOW |   |   |   |   |           |
|---------------------|------------------------------|---|---|---|---|-----------|
|                     | 1                            | 2 | 3 | 4 | 5 | N-2 N-1 N |
| 6 CKT (OR OVER ALL) | ⓪                            | — | — | — | — | ⓪         |
| 5 CKT               | ⓪                            | — | — | ⓪ | — | —         |
| 4 CKT               | ⓪                            | — | — | ⓪ | — | —         |
| 3 CKT               | ⓪                            | — | ⓪ | — | — | —         |
| 2 CKT               | ⓪                            | ⓪ | — | — | — | —         |



- NOTE:
- MATERIALS : HOUSING - NYLON (PA66), UL94 V-0  
 COLOR : SEE OPTION  
 TERMINAL - BRASS
  - FINISHES : TERMINAL - TIN THICKNESS 127-254 MICROMETER OVER  
 NICKEL THICKNESS 2.54 MICROMETER MIN OVERALL  
 COPPER THICKNESS 1.07 MICROMETER MIN OVERALL
  - PRODUCT SPECIFICATION : PS-87369-0002
  - BULK PACK IN PVC BAG WITH 1000 PCS PER BAG.



|   |   |  |  |   |  |  |
|---|---|--|--|---|--|--|
| NEW RELEASE<br>EC NO: SH2006-0288<br>DRWN:DRU 2005/12/07<br>CHKD:HARVEY 2005/12/08<br>APPR:GCHEN 2005/12/09 | QUALITY SYMBOLS<br>▽=0<br>▽=0   | GENERAL TOLERANCES (UNLESS SPECIFIED)<br>mm INCH<br>4 PLACES ± --- ± ---<br>3 PLACES ± --- ± ---<br>2 PLACES ± 0.25 ± ---<br>1 PLACE ± 0.25 ± ---<br>ANGULAR ± 2 ° | DIMENSION STYLE IN/MM<br>DRAWN BY DATE<br>SAM SHIN 1998/10/22<br>CHECKED BY DATE<br>APPROVED BY DATE | SCALE DESIGN UNITS INCH<br>THIRD ANGLE PROJECTION | TITLE<br>2.0MM WIRE-BOARD STRAIGHT HEADER WITH COINING |  |
|   | DRAFT WHERE APPLICABLE MUST REMAIN WITHIN DIMENSIONS  | MATERIAL NO. SEE TABLE<br>DOCUMENT NO. SD-89400-**2*<br>SHEET NO. 1 OF 1   | MOLEX MOLEX INCORPORATED   |   |  |  |
|   | THIS DRAWING CONTAINS INFORMATION THAT IS PROPRIETARY TO MOLEX INCORPORATED AND SHOULD NOT BE USED WITHOUT WRITTEN PERMISSION |  |  |   |  |  |
|   | SIZE A3   |  |  |   |  |  |

9 8 7 6 5 4 3 2 1