

PLEASE CHECK WWW.MOLEX.COM FOR LATEST PART INFORMATION

Part Number: [0894000610](#)
Status: **Active**
Description: 2.00mm (.079") Pitch Wire-to-Board Header, Vertical, 6 Circuits, without Kinked PC Tail

Documents:

[3D Model](#) [Product Specification PS-87369-0001 \(PDF\)](#)
[Drawing \(PDF\)](#) [RoHS Certificate of Compliance \(PDF\)](#)

Agency Certification

CSA LR19980
 UL E29179

General

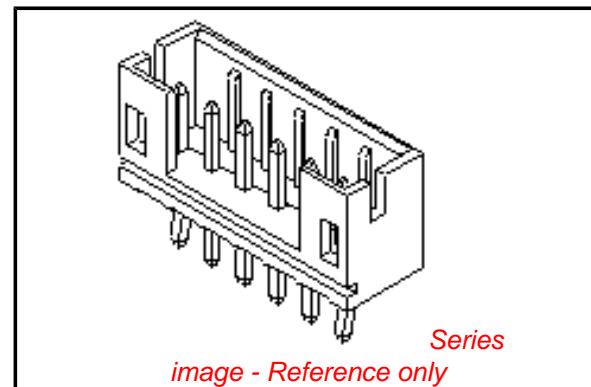
Product Family PCB Headers
 Series [89400](#)
 Application Wire-to-Board
 Product Name N/A

Physical

Breakaway No
 Circuits (Loaded) 6
 Circuits (maximum) 6
 Color - Resin Natural
 Durability (mating cycles max) 30
 First Mate / Last Break No
 Flammability 94V-0
 Glow-Wire Compliant No
 Guide to Mating Part No
 Keying to Mating Part None
 Lock to Mating Part Yes
 Material - Plating Mating Tin
 Material - Plating Termination Tin
 Material - Resin Nylon
 Number of Rows 1
 Orientation Vertical
 PC Tail Length (in) 0.134 In
 PC Tail Length (mm) 3.40 mm
 PCB Locator No
 PCB Retention None
 PCB Thickness Recommended (in) 0.045 In
 PCB Thickness Recommended (mm) 1.20 mm
 Packaging Type Bag
 Pitch - Mating Interface (in) 0.079 In
 Pitch - Mating Interface (mm) 2.00 mm
 Plating min: Mating (µin) 50
 Plating min: Mating (µm) 1.27
 Plating min: Termination (µin) 50
 Plating min: Termination (µm) 1.27
 Polarized to PCB No
 Shrouded Partial
 Stackable No
 Temperature Range - Operating -25°C to +85°C
 Termination Interface: Style Through Hole

Electrical

Current - Maximum per Contact 4A



EU RoHS

ELV and RoHS Compliant
REACH SVHC
 Not Reviewed
Halogen-Free Status

China RoHS



Need more information on product environmental compliance?

Email productcompliance@molex.com
 For a multiple part number RoHS Certificate of Compliance, [click here](#)

Please visit the [Contact Us](#) section for any non-product compliance questions.

Search Parts in this Series

[89400Series](#)

Mates With

[87369 Crimp Housing](#)

Voltage - Maximum

250V

Material Info

Reference - Drawing Numbers

Product Specification

PS-87369-0001

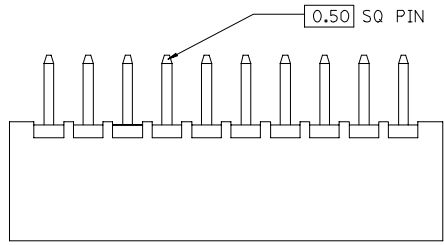
Sales Drawing

SD-89400-***1*

This document was generated on 06/08/2010

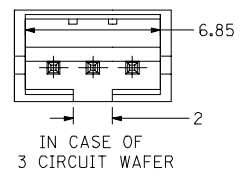
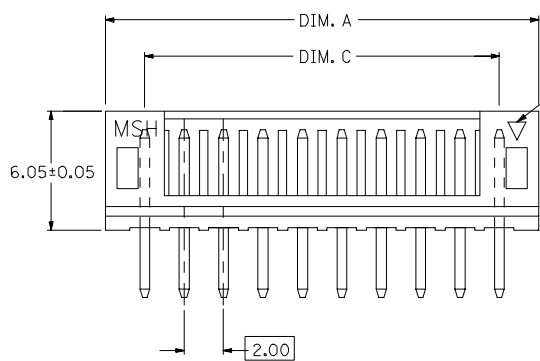
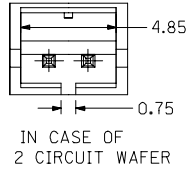
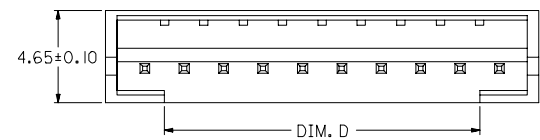
PLEASE CHECK WWW.MOLEX.COM FOR LATEST PART INFORMATION

10 9 8 7 6 5 4 3 2 1



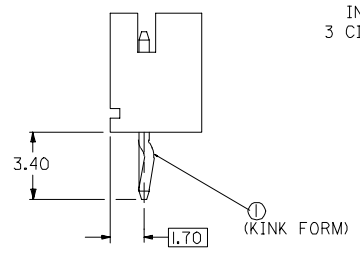
PART NO. LEGEND
 89400 - ** 2 *
 CKT SIZE — ** — COLOR OPTION
 0 - NATURAL (WHITE)
 1 - BLACK
 2 - RED
 3 - YELLOW
 4 - BLUE
 6 - GREEN

CIRCUITS	ORDER NO.	DIM. C	DIM. D	DIM. A
2	89400-022*	2.00	0.75	6.00
3	89400-032*	4.00	2.00	8.00
4	89400-042*	6.00	4.00	10.00
5	89400-052*	8.00	6.00	12.00
6	89400-062*	10.00	8.00	14.00
7	89400-072*	12.00	10.00	16.00
8	89400-082*	14.00	12.00	18.00
9	89400-092*	16.00	14.00	20.00
10	89400-102*	18.00	16.00	22.00
11	89400-112*	20.00	18.00	24.00
12	89400-122*	22.00	20.00	26.00
13	89400-132*	24.00	22.00	28.00
14	89400-142*	26.00	24.00	30.00
15	89400-152*	28.00	26.00	32.00
16	89400-162*	30.00	28.00	34.00

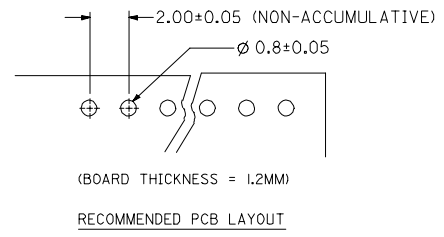


KINK TO BE APPLIED AS FOLLOW

CKT NO. CKT	CKT							
	1	2	3	4	5	N-2	N-1	N
6 CKT (OR OVER ALL)	⓪	—	—	—	—	—	—	⓪
5 CKT	⓪	—	—	—	⓪	—	—	—
4 CKT	⓪	—	—	⓪	—	—	—	—
3 CKT	⓪	—	⓪	—	—	—	—	—
2 CKT	⓪	⓪	—	—	—	—	—	—



- NOTE:
- MATERIALS : HOUSING - NYLON (PA66), UL94 V-0
 COLOR : SEE OPTION
 TERMINAL - BRASS
 - FINISHES : TERMINAL - TIN THICKNESS 127-254 MICROMETER OVER
 NICKEL THICKNESS 2.54 MICROMETER MIN OVERALL
 COPPER THICKNESS 1.07 MICROMETER MIN OVERALL
 - PRODUCT SPECIFICATION : PS-87369-0002
 - BULK PACK IN PVC BAG WITH 1000 PCS PER BAG.



NEW RELEASE EC NO: SH2006-0288 DRWN:DRU 2005/12/07 CHKD:HARVEY 2005/12/08 APPR:GCHEN 2005/12/09	QUALITY SYMBOLS	GENERAL TOLERANCES (UNLESS SPECIFIED)	DIMENSION STYLE	SCALE	DESIGN UNITS	THIRD ANGLE PROJECTION	
	▽=0 ∇=0	mm INCH	IN/MM	INCH	INCH		
		4 PLACES ± --- ± ---	DRAWN BY DATE			TITLE	
		3 PLACES ± --- ± ---	SAM SHIN 1998/10/22			2.0MM WIRE-BOARD STRAIGHT HEADER WITH COINING	
	2 PLACES ± 0.25 ± ---	CHECKED BY DATE					
	1 PLACE ± 0.25 ± ---	APPROVED BY DATE					
	ANGULAR ± 2 °						
		DRAFT WHERE APPLICABLE MUST REMAIN WITHIN DIMENSIONS	MATERIAL NO.	DOCUMENT NO.			
			SEE TABLE	SD-89400-**2*			
			SIZE A3			SHEET NO. 1 OF 1	

9 8 7 6 5 4 3 2 1