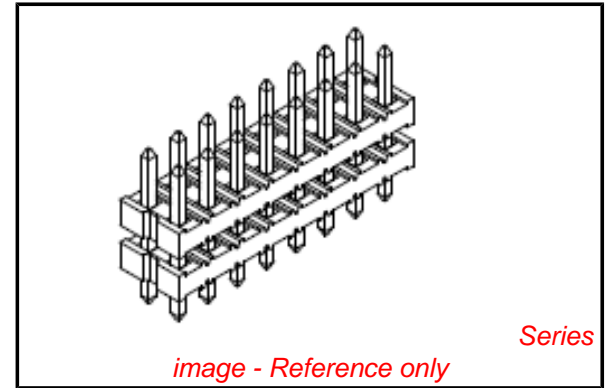


PLEASE CHECK WWW.MOLEX.COM FOR LATEST PART INFORMATION

Part Number: [0877612400](#)
Status: **Active**
Overview: milligrid
Description: 2.00mm (.079") Pitch Milli-Grid™ Header, Dual Row Dual Body, Through Hole, Vertical, 24 Circuits, 0.75µm (30µ") Gold (Au) Selective Plating, 27.50mm (1.083") Stacking Height, Tray Packaging, Lead-free

Documents:

[Drawing \(PDF\)](#) [RoHS Certificate of Compliance \(PDF\)](#)
[Product Specification PS-87761-100 \(PDF\)](#)



General

Product Family	PCB Headers
Series	87761
Application	Board-to-Board
Overview	milligrid
Product Name	Dual Body, Milli-Grid™

Physical

Breakaway	Yes
Circuits (Loaded)	24
Circuits (maximum)	24
Color - Resin	Black
First Mate / Last Break	No
Glow-Wire Compliant	No
Guide to Mating Part	No
Keying to Mating Part	None
Lock to Mating Part	None
Mated Height (in)	0.217 In
Mated Height (mm)	5.50 mm
Material - Metal	Copper Alloy
Material - Plating Mating	Gold
Material - Plating Termination	Tin
Material - Resin	Nylon
Number of Rows	2
Orientation	Vertical
PCB Locator	No
PCB Retention	None
Packaging Type	Tray
Pitch - Mating Interface (in)	0.079 In
Pitch - Mating Interface (mm)	2.00 mm
Pitch - Term. Interface (in)	0.079 In
Pitch - Term. Interface (mm)	2.00 mm
Plating min: Mating (µin)	30
Plating min: Mating (µm)	0.75
Plating min: Termination (µin)	79
Plating min: Termination (µm)	2.00
Polarized to Mating Part	No
Polarized to PCB	No
Robotic Placement	None
Shrouded	No
Stackable	No
Temperature Range - Operating	-55°C to +105°C
Termination Interface: Style	Through Hole

Electrical

EU RoHS

**ELV and RoHS
Compliant**
**REACH SVHC
Contains SVHC: No**
**Halogen-Free
Status**

China RoHS



**Need more information on product
environmental compliance?**

Email productcompliance@molex.com
 For a multiple part number RoHS Certificate of Compliance, [click here](#)

Please visit the [Contact Us](#) section for any non-product compliance questions.

Search Parts in this Series

[87761Series](#)

Mates With

[79109 Board-to-Board Top/Bottom Entry
SMT Receptacle](#)

Current - Maximum per Contact
Voltage - Maximum

2A
125V

Material Info

Reference - Drawing Numbers

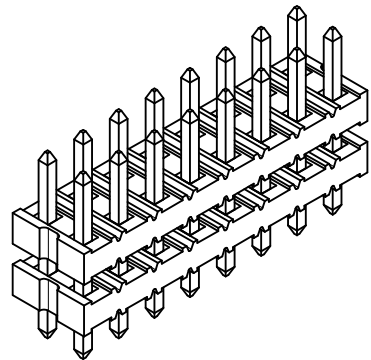
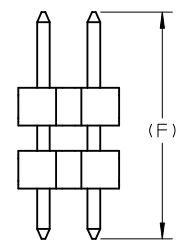
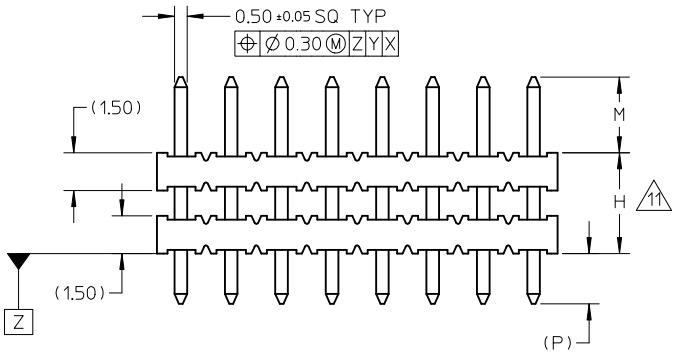
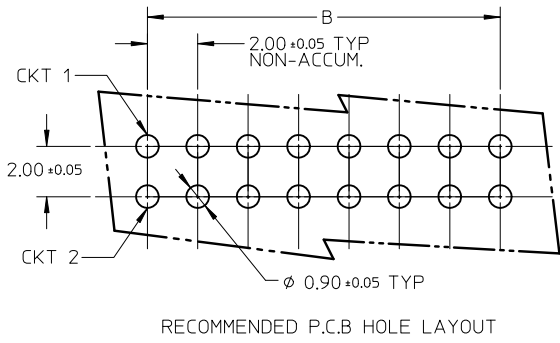
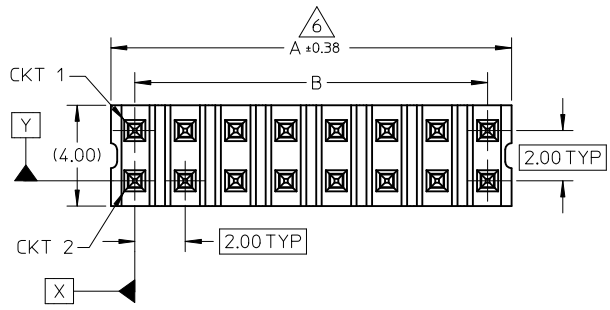
Product Specification
Sales Drawing

PS-87761-100
SD-87761-052

This document was generated on 05/26/2010

PLEASE CHECK WWW.MOLEX.COM FOR LATEST PART INFORMATION

- NOTES:
- MATERIAL:
HSG: NYLON, GLASS-FILLED, UL94V-0 COLOR: BLACK
PIN: 0.50MM SQ, COPPER ALLOY
 - PLATING FINISH:
 - 0.38µm MIN. GOLD OVER
1.25µm MIN. NICKEL OVERALL.
 - GOLD FLASH ON CONTACT AND
2.50µm MIN. TIN ON SOLDER TAIL OVER
1.25µm MIN. NICKEL OVERALL.
 - 0.38µm MIN. GOLD PLATE ON CONTACT AND
2.00µm MIN. TIN ON SOLDER TAIL OVER
1.25µm MIN. NICKEL OVERALL.
 - 0.75µm MIN. GOLD PLATE ON CONTACT AND
2.00µm MIN. TIN ON SOLDER TAIL OVER
1.25µm MIN. NICKEL OVERALL.
 - 2.50µm MIN. TIN OVERALL
1.25µm MIN. NICKEL OVERALL.
 - 0.38µm MIN. GOLD PLATE ON CONTACT AND
0.05µm MIN. GOLD ON SOLDER TAIL OVER
1.25µm MIN. NICKEL OVERALL.
 - 0.75µm MIN. GOLD PLATE ON CONTACT AND
0.05µm MIN. GOLD ON SOLDER TAIL OVER
1.25µm MIN. NICKEL OVERALL.
 - 0.75µm MIN. GOLD OVERALL
1.25µm MIN. NICKEL OVERALL.
 - PIN PUSHOUT FORCE: 0.85KgF MIN IN EITHER DIRECTION.
 - THE ABOVE 16CKTS SHOWN IS FOR ILLUSTRATION ONLY.
 - FOR PACKING OPTION PLEASE REFER TO THE TABLE.
 - IRREGULAR CIRCUIT CUTOFF WITHIN BREAKAWAY SECTION IS PERMISSIBLE. CUTTING OR CHIPPING OF THE MAIN BODY IS NOT ACCEPTABLE
 - PRODUCT SPEC PS-87761-001 APPLIES.
 - RECOMMENDED PCB THICKNESS 1.60MM.
 - WAFER TO BE FLAT WITHIN 0.003 mm/mm
 - PACKAGING SPECIFICATION:
TRAY: PK-89990-487
BULK: PK-89990-490
TUBE: PK-89990-475
 - WHEN WAFER ARE STACK TOGETHER, DIMENSION 'H' SHOULD BE TAKEN AS REFERENCE.



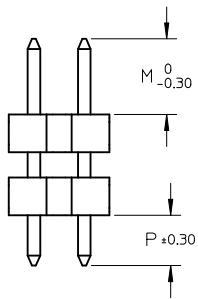
0087-DW-FUJITSU EC NO: S2010-0896 DRWN:SKANG 2010/04/23 CHKD:ATSEE 2010/05/24 APPR:MLONG 2010/05/29	QUALITY SYMBOLS ▽=0 ◻=0	GENERAL TOLERANCES (UNLESS SPECIFIED)		DIMENSION STYLE MM ONLY		SCALE NTS	DESIGN UNITS METRIC	THIRD ANGLE PROJECTION		
		4 PLACES ± --- ± ---	mm INCH	DRAWN BY KCHO	DATE 2005/02/23	TITLE 2MM DUAL ROW DUAL WAFER HEADER, VERTICAL T/H				
		3 PLACES ± --- ± ---		CHECKED BY PTLIM	DATE 2005/04/26					
		2 PLACES ± 0.20 ± ---		APPROVED BY MLONG	DATE 2009/12/02	MATERIAL NO. SEE TABLE DOCUMENT NO. MOLEX INCORPORATED SD-87761-052				
1 PLACE ± --- ± ---		ANGULAR ± 3 °		DRAFT WHERE APPLICABLE MUST REMAIN WITHIN DIMENSIONS		SHEET NO. 1 OF 3		THIS DRAWING CONTAINS INFORMATION THAT IS PROPRIETARY TO MOLEX INCORPORATED AND SHOULD NOT BE USED WITHOUT WRITTEN PERMISSION		

10 9 8 7 6 5 4 3 2 1

CKT SIZE	DIMENSION	
	A	B
04	4.00	2.00
06	6.00	4.00
08	8.00	6.00
10	10.00	8.00
12	12.00	10.00
14	14.00	12.00
16	16.00	14.00
18	18.00	16.00
20	20.00	18.00
22	22.00	20.00
24	24.00	22.00
26	26.00	24.00
28	28.00	26.00
30	30.00	28.00
32	32.00	30.00
34	34.00	32.00
36	36.00	34.00
38	38.00	36.00
40	40.00	38.00
42	42.00	40.00
44	44.00	42.00
46	46.00	44.00
48	48.00	46.00
50	50.00	48.00

PART NUMBERS	CKT SIZE	VOID POSITION	KINK POSITION	DIMENSION				PLATING OPTION	PACKAGING TYPE	
				MATING END	STACKER HEIGHT	SOLDER TAIL	(F)			
				M	H	(P)				
87761-0401	4	----	----	4.00	15.50	3.50	23.00	3	TRAY	
87761-0600	6	----	----	7.00	5.00	2.80	14.80	5		
87761-0801	8	3,4,5,6	----	4.00	15.50	3.50	23.00	3		
87761-0800	8	----	----	8.70	16.00	3.50	28.20	4		BULK
87761-0802	8	----	----	3.50	21.34	3.50	28.34	8		
87761-1006	10	1	----	1.16	3.05	3.99	8.20	5	TRAY	
87761-1009	10	----	----	1.16	3.05	3.99	8.20	5		
87761-1007	10	----	----	2.60	34.00	2.60	39.20	5		
87761-1000	10	----	----	5.50	27.50	3.43	36.43	4		
87761-1001	10	----	----	2.50	14.50	4.00	21.00	4		
87761-0012	12	----	----	2.60	10.00	3.70	16.30	5		
87761-1200	12	----	----	4.00	24.00	2.79	30.79	4		
87761-0016	16	----	----	4.00	11.15	3.85	17.00	3		
87761-0017	16	----	----	3.00	3.00	2.70	8.70	5		
87761-1600	16	----	----	7.00	5.00	2.80	14.80	5		
87761-0020	20	----	----	6.00	4.00	2.90	12.90	5		
87761-0031	20	----	----	3.00	4.00	2.03	9.00	6		
87761-2000	20	----	----	4.00	24.00	2.79	30.79	4		
87761-2001	20	----	----	2.50	14.50	4.00	21.00	4		
87761-2018	20	----	----	4.50	10.16	4.45	19.10	3		
87761-2400	24	----	----	5.50	27.50	2.80	35.80	4		
87761-2401	24	----	----	2.00	60.00	2.00	64.00	7		
87761-2402	24	----	----	2.00	42.00	2.00	46.00	7		
87761-2610	26	----	----	5.30	6.30	2.70	14.30	4		
87761-3000	30	----	----	4.00	17.30	4.00	25.30	1		
87761-0024	40	----	----	8.89	15.88	3.43	28.20	4		
87761-4000	40	----	----	2.60	3.00	2.60	8.20	5		
87761-4218	42	----	----	4.50	10.16	4.45	19.10	3		
87761-4400	44	----	----	7.00	5.00	4.00	16.00	5		
87761-0026	50	----	----	8.89	15.88	3.43	28.20	4		
87761-5000	50	----	----	3.50	10.00	3.50	17.00	5		

NOTES:
 12. APPLY ONLY FOR PART#87761-5021 & 87761-5022



0087-DW-FUJITSU EC NO: S2010-0896 DRWN:SKANG 2010/04/23 CHYKD:ATSEE 2010/05/24 APPR:MLONG 2010/05/29	QUALITY SYMBOLS	GENERAL TOLERANCES (UNLESS SPECIFIED)	DIMENSION STYLE	SCALE	DESIGN UNITS	THIRD ANGLE PROJECTION
	$\nabla=0$ $\square=0$	mm INCH	MM ONLY	NTS	METRIC	
		4 PLACES \pm --- \pm --- 3 PLACES \pm --- \pm --- 2 PLACES ± 0.20 \pm --- 1 PLACE \pm --- \pm --- ANGULAR $\pm 3^\circ$	DRAWN BY DATE KCHO 2005/02/23 CHECKED BY DATE PTL IM 2005/04/26 APPROVED BY DATE MLONG 2009/12/02	TITLE	2MM DUAL ROW DUAL WAFER HEADER, VERTICAL T/H	
		DRAFT WHERE APPLICABLE MUST REMAIN WITHIN DIMENSIONS	MATERIAL NO. SEE TABLE	MOLEX INCORPORATED DOCUMENT NO. SD-87761-052	SHEET NO. 2 OF 3	

9 8 7 6 5 4 3 2 1

PART NUMBERS	CKT SIZE	VOID POSITION	KINK POSITION	DIMENSION				PLATING OPTION	PACKAGING TYPE
				MATING END	STACKER HEIGHT	SOLDER TAIL	(F)		
				M	H	(P)			
87761-5001	50	----	----	2.50	10.30	4.00	16.80	4	TRAY
△ 87761-5021	50	----	----	4.00	8.70	2.50	15.20	3	
△ 87761-5022	50	----	----	4.00	5.71	2.50	12.21	3	

0087-DW-FUJITSU EC NO: S2010-0896 DRWN:SKANG 2010/04/23 CHKD:ATSEE 2010/05/24 APPR:MLONG 2010/05/29	DESCRIPTION REV	QUALITY SYMBOLS =0 =0	GENERAL TOLERANCES (UNLESS SPECIFIED) <table border="1"> <thead> <tr> <th></th> <th>mm</th> <th>INCH</th> </tr> </thead> <tbody> <tr> <td>4 PLACES</td> <td>± ---</td> <td>± ---</td> </tr> <tr> <td>3 PLACES</td> <td>± ---</td> <td>± ---</td> </tr> <tr> <td>2 PLACES</td> <td>± 0.20</td> <td>± ---</td> </tr> <tr> <td>1 PLACE</td> <td>± ---</td> <td>± ---</td> </tr> </tbody> </table>		mm	INCH	4 PLACES	± ---	± ---	3 PLACES	± ---	± ---	2 PLACES	± 0.20	± ---	1 PLACE	± ---	± ---	DIMENSION STYLE MM ONLY	SCALE NTS	DESIGN UNITS METRIC	THIRD ANGLE PROJECTION
			mm	INCH																		
		4 PLACES	± ---	± ---																		
		3 PLACES	± ---	± ---																		
2 PLACES	± 0.20	± ---																				
1 PLACE	± ---	± ---																				
		DRAFT WHERE APPLICABLE MUST REMAIN WITHIN DIMENSIONS	<table border="1"> <thead> <tr> <th>DRAWN BY</th> <th>DATE</th> <th>TITLE</th> </tr> </thead> <tbody> <tr> <td>KCHO</td> <td>2005/02/23</td> <td rowspan="3">2MM DUAL ROW DUAL WAFER HEADER, VERTICAL T/H</td> </tr> <tr> <td>CHECKED BY</td> <td>DATE</td> </tr> <tr> <td>PTL IM</td> <td>2005/04/26</td> </tr> </tbody> </table>	DRAWN BY	DATE	TITLE	KCHO	2005/02/23	2MM DUAL ROW DUAL WAFER HEADER, VERTICAL T/H	CHECKED BY	DATE	PTL IM	2005/04/26	MOLEX INCORPORATED								
DRAWN BY	DATE	TITLE																				
KCHO	2005/02/23	2MM DUAL ROW DUAL WAFER HEADER, VERTICAL T/H																				
CHECKED BY	DATE																					
PTL IM	2005/04/26																					
		MATERIAL NO.	DOCUMENT NO.	SHEET NO.																		
		SIZE A3	THIS DRAWING CONTAINS INFORMATION THAT IS PROPRIETARY TO MOLEX INCORPORATED AND SHOULD NOT BE USED WITHOUT WRITTEN PERMISSION																			