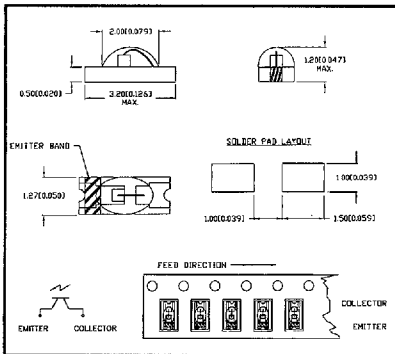


## SMT PACKAGES

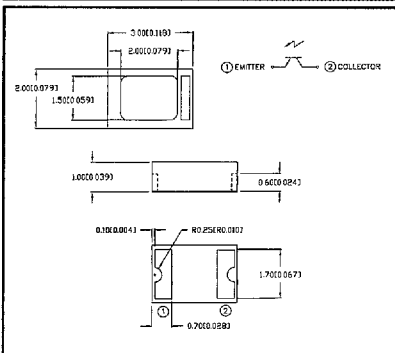
### OED-ST-44F



Package Style	Lens	Limits of Safe Operation			ICEO @ 10 V <sub>CEO</sub> (nA) Max
		V <sub>CEO</sub> (V) Max	PC (mW) Max	t-opr (°C)	
SMT Ceramic	Clear Epoxy	75	130	-20 ~ + 80	1000

I <sub>c</sub> (mA) @ EV ~ 1000 Lx				λ <sub>p</sub> (nm) Typ	Δθ deg Typ	λ (nm)	tr/tf @ V <sub>EC</sub> 5V I <sub>c</sub> 1mA
Min	Typ	Max	V <sub>CE</sub> (V)				
—	3.0	—	5.0	880	±20	500 ~ 1050	3/3 μS

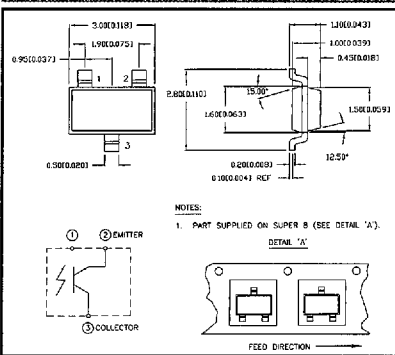
### OED-ST-23-TR



Package Style	Lens	Limits of Safe Operation			ICEO @ 10 V <sub>CEO</sub> (nA) Max
		V <sub>CEO</sub> (V) Max	PC (mW) Max	t-opr (°C)	
SMT 2 layer Ceramic	Clear Epoxy	30	100	-40 ~ + 85	100

I <sub>c</sub> (mA) @ EV ~ 1000 Lx				λ <sub>p</sub> (nm) Typ	Δθ deg Typ	λ (nm)	tr/tf @ V <sub>EC</sub> 5V I <sub>c</sub> 1mA
Min	Typ	Max	V <sub>CE</sub> (V)				
0.5	5.0	—	5.0	940	±50	700 ~ 1050	3/3 μS

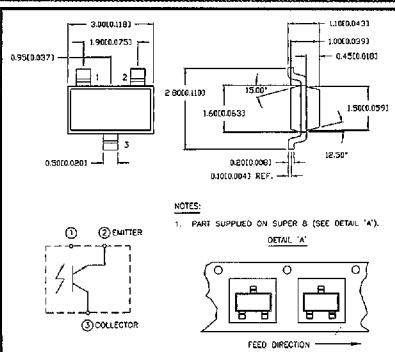
### OED-ST-15-TR



Package Style	Lens	Limits of Safe Operation			ICEO @ 10 V <sub>CEO</sub> (nA) Max
		V <sub>CEO</sub> (V) Max	PC (mW) Max	t-opr (°C)	
SMT SOT-23	Clear Epoxy	30	100	-20 ~ + 80	100

I <sub>c</sub> (mA) @ EV ~ 1000 Lx				λ <sub>p</sub> (nm) Typ	Δθ deg Typ	λ (nm)	tr/tf @ V <sub>EC</sub> 5V I <sub>c</sub> 1mA
Min	Typ	Max	V <sub>CE</sub> (V)				
—	3.0	—	3.0	900	±70	600 ~ 1050	15/15 μS

### OED-ST-15R2-TR



Package Style	Lens	Limits of Safe Operation			ICEO @ 10 V <sub>CEO</sub> (nA) Max
		V <sub>CEO</sub> (V) Max	PC (mW) Max	t-opr (°C)	
SMT SOT-23	Black Epoxy	30	100	-20 ~ + 80	100

I <sub>c</sub> (mA) @ EV ~ 1000 Lx				λ <sub>p</sub> (nm) Typ	Δθ deg Typ	λ (nm)	tr/tf @ V <sub>EC</sub> 5V I <sub>c</sub> 1mA
Min	Typ	Max	V <sub>CE</sub> (V)				
—	3.0	—	3.0	900	±50	600 ~ 1050	15/15 μS

### DAYLIGHT FILTER

Package Style	Lens	Limits of Safe Operation			ICEO @ 10 V <sub>CEO</sub> (nA) Max
		V <sub>CEO</sub> (V) Max	PC (mW) Max	t-opr (°C)	
SMT SOT-23	Black Epoxy	30	100	-20 ~ + 80	100

I <sub>c</sub> (mA) @ EV ~ 1000 Lx				λ <sub>p</sub> (nm) Typ	Δθ deg Typ	λ (nm)	tr/tf @ V <sub>EC</sub> 5V I <sub>c</sub> 1mA
Min	Typ	Max	V <sub>CE</sub> (V)				
—	3.0	—	3.0	900	±50	600 ~ 1050	15/15 μS