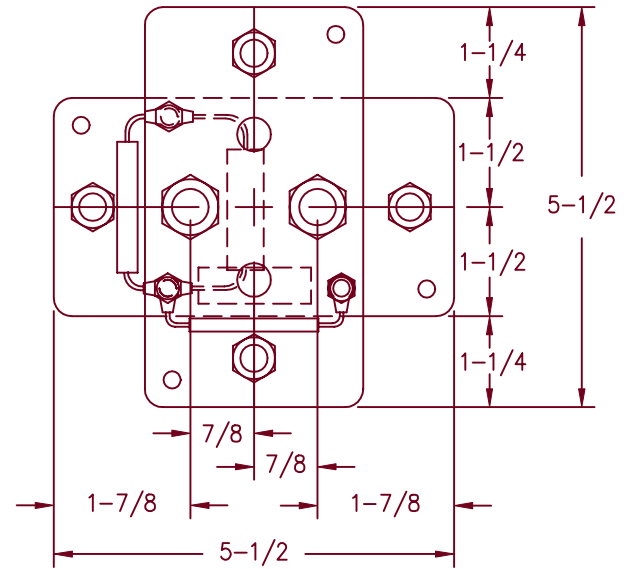
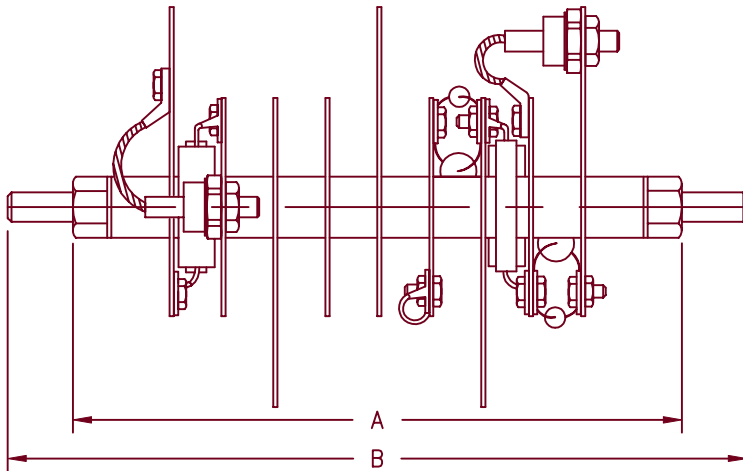
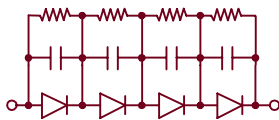


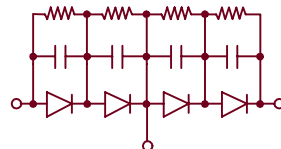
High Voltage Rectifier Assembly LHV43 Series



Mounting: Horizontal (convection cooling)
 Horizontal or vertical (forced air or oil)
 DC output rating— 32 Amps/25°C convection cooled
 – 70 Amps/40°C forced air cooled
 @ 1000 LFM
 – 100 Amps/40°C oil cooled
 Peak Reverse voltage— from 8KV to 80KV



H = Halfwave



D = Doubler

- Single Phase Halfwave Or Doubler
- Gold Iridited Aluminum Heatsinks
- Each Diode is R-C Compensated
- 2500 Amperes Surge Current (1 Cycle)
- Resistive – Inductive Load. Derate 20% for Capacitive Loads

CATALOG NUMBER	PRV RATING KV	DIMENSION A	DIMENSION B
LHV43*8	8	10-1/8	12-1/4
LHV43*12	12	13-5/8	15-3/4
LHV43*16	16	17-1/8	19-1/4
LHV43*20	20	20-5/8	22-3/4
LHV43*24	24	24-1/8	26-1/4
LHV43*28	28	27-5/8	29-3/4
LHV43*32	32	31-1/8	33-1/4
LHV43*36	36	34-5/8	36-3/4
LHV43*40	40	38-1/8	40-1/4
LHV43*44	44	41-5/8	43-3/4
LHV43*48	48	45-1/8	47-1/4

*Add H or D For doublers add 1" to both dimensions A & B

3-12-01 Rev. IR

LHV43

