

PLEASE CHECK WWW.MOLEX.COM FOR LATEST PART INFORMATION

Part Number: [0877910120](#)
Status: **Active**
Description: 2.00mm (.079") Pitch Board-to-Board Panel Detachable, PCB Receptacle, Surface Mount, 20 Circuits, Gold (Au) Selective Plating, Tray Packaging, Lead-free

Documents:

[3D Model](#) [Product Specification PS-87791-014 \(PDF\)](#)
[Drawing \(PDF\)](#) [RoHS Certificate of Compliance \(PDF\)](#)

General

Product Family	PCB Receptacles
Series	87791
Application	Board-to-Board
Comments	Panel Detachable
Product Name	N/A

Physical

Circuits (Loaded)	20
Durability (mating cycles max)	15,000
Glow-Wire Compliant	No
Lock to Mating Part	None
Mated Height (in)	0.309 In
Mated Height (mm)	7.85 mm
Material - Metal	Copper
Material - Plating Mating	Gold
Material - Plating Termination	Tin
Number of Rows	2
Orientation	Vertical
PCB Locator	Yes
PCB Retention	Yes
PCB Thickness Recommended (in)	0.062 In
PCB Thickness Recommended (mm)	1.60 mm
Packaging Type	Tray
Pitch - Mating Interface (in)	0.079 In
Pitch - Mating Interface (mm)	2.00 mm
Polarized to Mating Part	No
Polarized to PCB	No
Stackable	No
Surface Mount Compatible (SMC)	N/A
Temperature Range - Operating	-25°C to +70°C
Termination Interface: Style	Through Hole

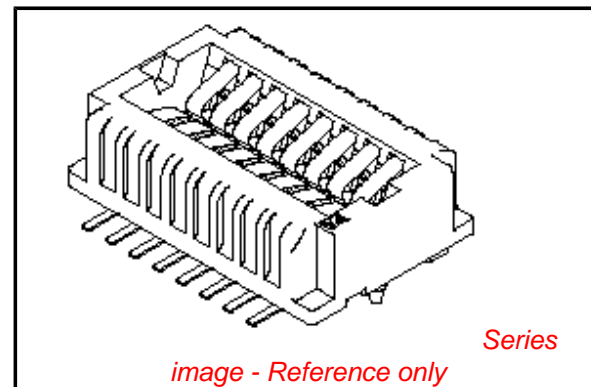
Electrical

Current - Maximum per Contact	1A
Voltage - Maximum	125V

Material Info

Reference - Drawing Numbers

Product Specification	PS-87791-014, RPS-87791-005
Sales Drawing	SD-87791-013



EU RoHS

ELV and RoHS Compliant
REACH SVHC
Contains SVHC: No
Halogen-Free
Status

China RoHS



Need more information on product environmental compliance?

Email productcompliance@molex.com
 For a multiple part number RoHS Certificate of Compliance, [click here](#)

Please visit the [Contact Us](#) section for any non-product compliance questions.

Search Parts in this Series

[87791Series](#)

Mates With

[87792-1120](#)

ASSEMBLY P/N	CKT SIZE	DIMENSIONS					
		A	B	C	D	E	F
87791-0014	14	19.00	16.00	15.80	16.00	12.00	6.00
87791-0016	16	21.00	18.00	17.80	18.00	14.00	7.00
87791-0114	14	19.00	16.00	15.80	16.00	12.00	6.00
87791-0116	16	21.00	18.00	17.80	18.00	14.00	7.00
87791-0120	20	25.00	22.00	21.80	22.00	18.00	9.00

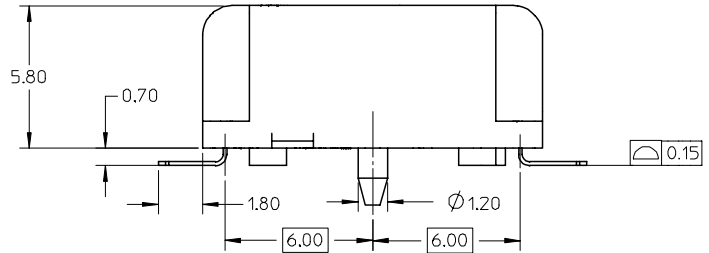
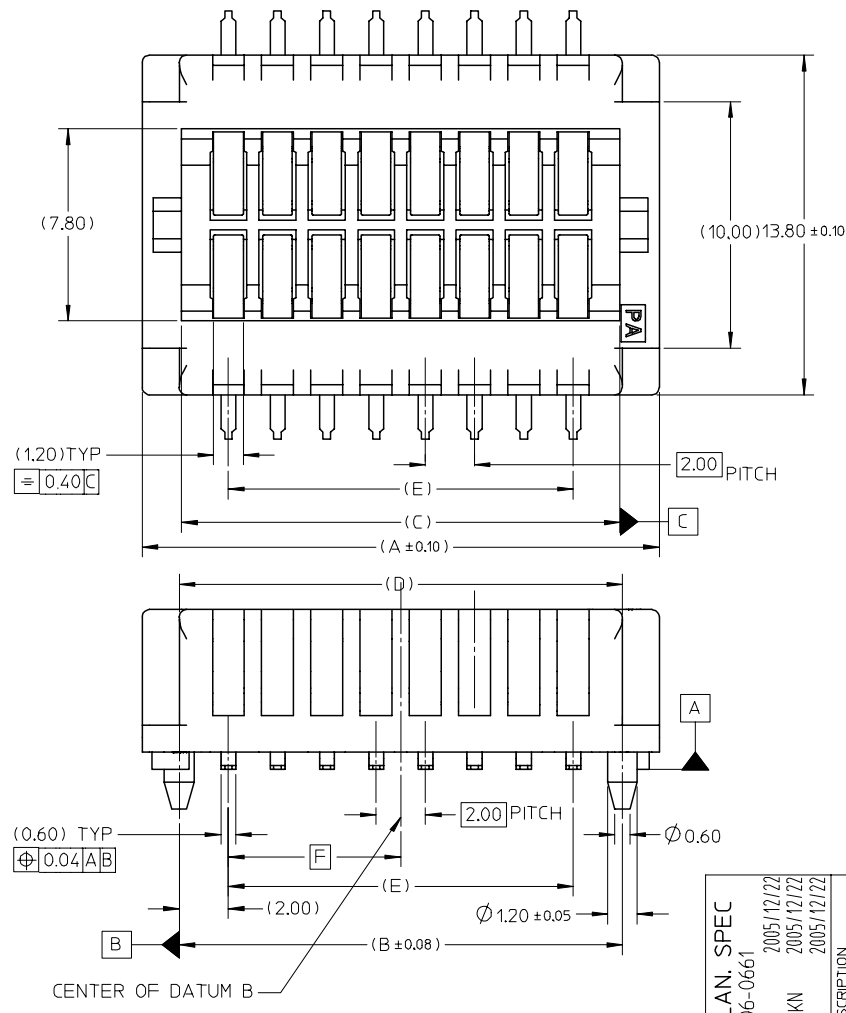
SOLDERTAIL PLATING OPTION

GOLD PLATING ON CONTACT AREA AND TIN-LEAD PLATING OVER NICKEL UNDERPLATE ON SOLDER TAIL AREA.

GOLD PLATING ON CONTACT AREA AND TIN PLATING OVER NICKEL UNDERPLATE ON SOLDER TAIL AREA.

NOTES:

- MATERIAL :
HOUSING : PA46, UL94V-0 (BLACK)
TERMINALS : PHOSPHOR BRONZE
- PLATINGS:
SEE TABLE.
- FOR ILLUSTRATION PURPOSE, 16 CKTS SIZE IS SHOWN.
- PARTS TO BE PACKED IN TRAY.
- REFER TO PRODUCT SPEC, PS-87791-014 FOR PERFORMANCE SPECIFICATIONS.



REV. COPLAN. SPEC
EC NO: S2006-0661
DRWN:CGOH
CHKD:NAGESHKN
APPR:PTL IM

REV	DESCRIPTION
B2	

QUALITY SYMBOLS	GENERAL TOLERANCES (UNLESS SPECIFIED)
▽=0	
▽C=0	
	4 PLACES ± --- ± ---
	3 PLACES ± --- ± ---
	2 PLACES ± 0.25 ± ---
	1 PLACE ± --- ± ---
	ANGULAR ± 3 °

DIMENSION STYLE	
MM ONLY	
DRAWN BY	DATE
CGOH	2004/08/05
CHECKED BY	DATE
PTL IM	2004/10/01
APPROVED BY	DATE
SCLOW	2004/11/01
MATERIAL NO.	
SEE TABLE	

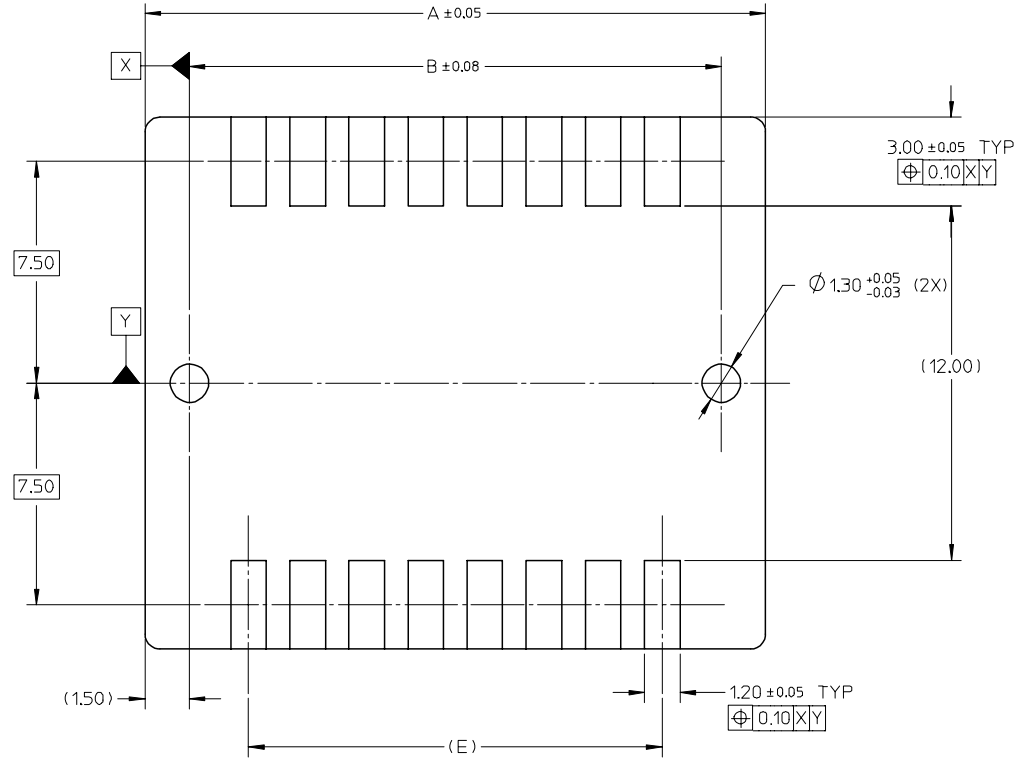
SCALE	DESIGN UNITS	THIRD ANGLE PROJECTION
NTS	METRIC	
TITLE		
2.0 B/B CONNECTOR, SMT (PANEL DETACHABLE TYPE)		
APPROVED BY		
MOLEX INCORPORATED		
DOCUMENT NO.		SHEET NO.
SD-87791-013		1 OF 2
DRAFT WHERE APPLICABLE MUST REMAIN WITHIN DIMENSIONS		
THIS DRAWING CONTAINS INFORMATION THAT IS PROPRIETARY TO MOLEX INCORPORATED AND SHOULD NOT BE USED WITHOUT WRITTEN PERMISSION		

10 9 8 7 6 5 4 3 2 1

F

F

RECOMMENDED PCB LAYOUT



E

E

D

D

C

C

B

B

A

A

REV. COPLAN. SPEC EC NO: S2006-0661 DRWN:CGH CHKD:NGESHKN APPR:PTL IM 2005/12/22 2005/12/22 2005/12/22	QUALITY SYMBOLS	GENERAL TOLERANCES (UNLESS SPECIFIED)		DIMENSION STYLE MM ONLY		SCALE NTS	DESIGN UNITS METRIC	THIRD ANGLE PROJECTION		
	$\nabla=0$ $\triangle=0$	4 PLACES	± ---	± ---	DRAWN BY CGOH	DATE 2004/08/05	TITLE 2.0 B/B CONNECTOR, SMT (PANEL DETACHABLE TYPE)			
		3 PLACES	± ---	± ---	CHECKED BY PTL IM	DATE 2004/10/01	APPROVED BY DATE 2004/11/01			
		2 PLACES	± 0.25	± ---	MATERIAL NO.		DOCUMENT NO. SD-87791-013		SHEET NO. 2 OF 2	
B2	DESCRIPTION	DRAFT WHERE APPLICABLE MUST REMAIN WITHIN DIMENSIONS		SEE TABLE		MOLEX INCORPORATED				
	REV	THIS DRAWING CONTAINS INFORMATION THAT IS PROPRIETARY TO MOLEX INCORPORATED AND SHOULD NOT BE USED WITHOUT WRITTEN PERMISSION								

9 8 7 6 5 4 3 2 1