

Features

- Frequency Range: 0.8~3.5GHz
- Standard Hermetic Package
- Operating Temperature Range: -55°C ~ +85°C

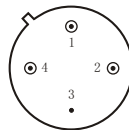
Specifications (50 Ω, V_{CC} = +5V, T_A = -55°C ~ +85°C)

Parameter	Symbol	Unit	Guaranteed	Typical
Frequency Range	f _L ~f _H	GHz	0.8~3.5	0.8~3.5
Gain	G _p	dB	≥11.0	13.5
Gain Flatness	ΔG _p	dB	≤±0.75	±0.5
Noise Figure	F _n	dB	≤4.5 Δ	2.5
Input VSWR	VSWR _i	---	≤2.0:1 Δ	1.7:1
Output VSWR	VSWR _o	---	≤2.0:1 Δ	1.8:1
Output Power @ 1dB Compression	P ₋₁	dBm	≥10.0 Δ	11.0
DC Current	I _{CC}	mA	---	36

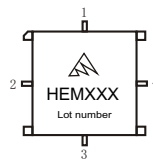
“Δ” T_A = 24 ± 1°C;

Maximum Rating

DC Voltage : +7VDC
RF Input: +10dBm
Storage Temp: +125°C



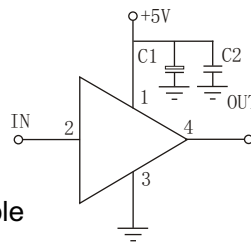
TO-8C



SMA-8C

Application Notes

1. Typical application shown as right, C₁ = 10~33 μF ; C₂ = 3300~6800pF;
2. See assembly section for mounting information
3. Connectorized package(SMA-1) available
4. ESD observe handling precautions



Typical Curves

