

## User's Guide

# D0107LT-33-0701A

# **VFD- RoHS Compliant**

(Vacuum Fluorescent Display)

---

For product support, contact

**Newhaven Display International**  
**2511 Technology Drive, #101**  
**Elgin, IL 60124**

Tel: (847) 844-8795 Fax: (847) 844-8796

February 21, 2008

# Vacuum Fluorescent Display Specification

**PART NUMBER:** **D0107LT-33-0701A**

**FEATURES:** 7 Digits, 7-Segmented, Instrumentation, Scales

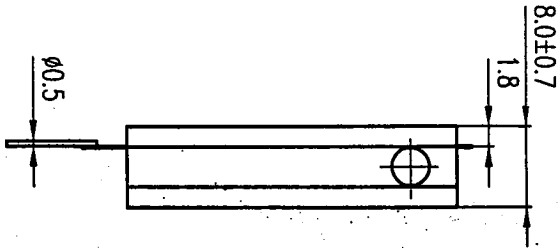
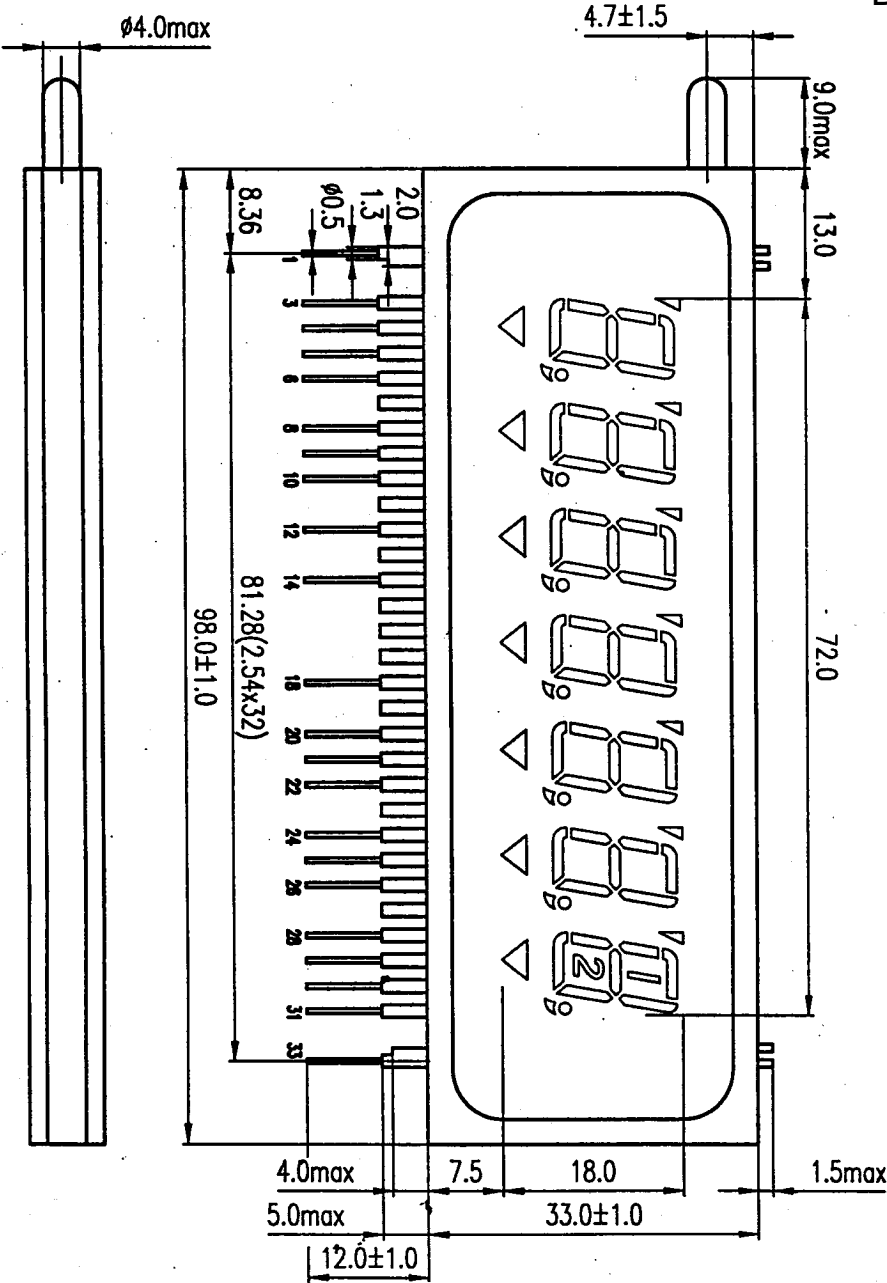
**APPLICATION:** Character Display (*7-Segmented*)

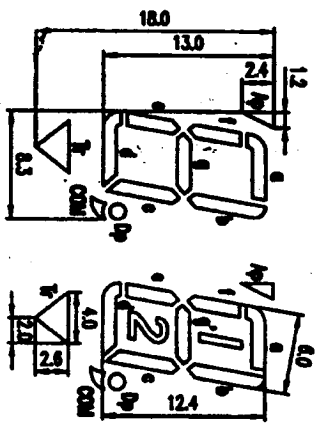
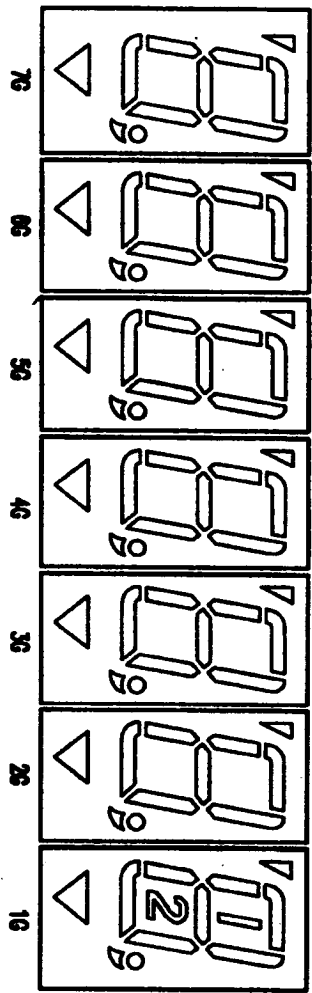
**RATINGS:** Below

<b>Outer Dimensions</b>	Panel Length	P.L.	98.0	mm	
	Panel Height	P.H.	33.0	mm	
	Panel Thickness	P.T.	8.0	mm	
<b>Leads</b>	Lead Pitch	L.P.	2.54	mm	
	Lead Out	-	SIL		
<b>Character Size</b>	Character Height	C.H.	12.4	mm	
	Character Width	C.W.	6.0	mm	
<b>Item</b>	<b>Symbol</b>	<b>Min.</b>	<b>Recommended</b>	<b>Max.</b>	<b>Unit</b>
<b>Filament Voltage</b>	Ef	2.9	3.3	3.6	Vac
<b>Peak Grid Voltage</b>	ec	-	35.0	42.0	Vp-p
<b>Peak Anode Voltage</b>	eb	-	35.0	42.0	Vp-p
-	-	-	-	-	-
<b>Duty Cycle</b>	Du	-	1/10	-	-
<b>Pulse Width</b>	tp	-	100	-	uS
<b>Operating Temperature</b>	Topr	-20	-	+ 70	C
<b>Storage Temperature</b>	Tstg	-55	-	+ 80	C
<b>Color of Illumination</b>	Green				

**Electrical  
Characteristics**

Item	Symbol	Test Condition	Min.	Typical	Max.	Unit	
<b>Filament Current</b>	if	Ef = 3.3 Vac	97.0	108.0	119.0	mAac	
	-	eb = ec = 0	-	-	-	-	
<b>Anode Current</b>	ib/1G~6G	Ef = 3.3 Vac eb = 35.0 Vp-p ec = 35.0 Vp-p Du = 1/10 Tp = 100 uS	-	8.0	16.0	MAp-p	
	-		-	9.0	18.0	MAp-p	
	-		-	-	-	-	MAp-p
	-		-	-	-	-	MAp-p
	-		-	-	-	-	MAp-p
<b>Grid Current</b>	ic / 1G~6G		-	8.5	17.0	MAp-p	
	ic / 7G		-	9.0	18.0	MAp-p	
	-		-	-	-	-	MAp-p
	-		-	-	-	-	MAp-p
	-		-	-	-	-	MAp-p
<b>Luminance</b>	L(G)		430	860	-	cd/m <sup>2</sup>	
	-		(125)	(250)	-	fL	
<b>Luminance Ratio</b>	Lmin/Lmax		50	-	-	%	
<b>Grid Cut-off Voltage</b>	Ecco	Ef = 3.3 Vac eb = 35.0 Vdc	-4.0	-	-	Vdc	
<b>Anode Cut-off Voltage</b>	Ebco	Ef = 3.3 Vac ec = 35.0 Vp-p Du = 1/10 Tp = 100uS	-2.0	-	-	Vdc	





Pin No.	1	2	3	4	5	6	7	8	9	10	11
Connect	F	NP	P(Ap)	P(I)	P(g)	7G	NC	P(e)	P(d)	6G	NC
Pin No.	12	13	14	15	16	17	18	19	20	21	22
Connect	P(Tr)	NC	5G	NC	NC	NC	4G	NC	P(COM)	P(DP)	3G
Pin No.	23	24	25	26	27	28	29	30	31	32	33
Connect	NC	P(c)	P(1 2)	2G	NC	P(g)	P(b)	1G	P(o)	NP	F

**NOTES:**

- F: Filament
- G: Grid
- NP: No Pin
- P: Anode
- NC: No Connect