

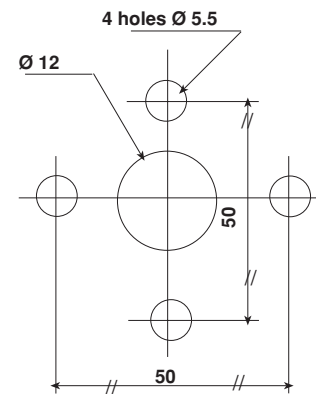
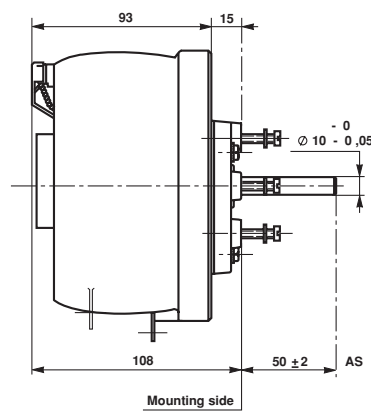
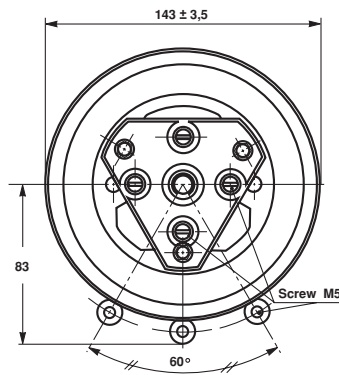
## Wirewound Rheostat/Potentiometer



### FEATURES

- 500 Watt at 25°C
- Vitreous wirewound protection

### DIMENSIONS in millimeters

**RT500**
**PANEL CUT OUT DETAILS**


### MECHANICAL SPECIFICATIONS

Mechanical Protection	vitreous
Mechanical Travel	300° ± 5°
Operating Torque	10 to 50 Ncm
End Stop Torque	200 Ncm
Unit Weight	1900 g

### ENVIRONMENTAL SPECIFICATIONS

Temperature Range	- 55°C + 320°C
Climatic Category	CCTU 454 CEI 55/200/56

### ELECTRICAL SPECIFICATIONS

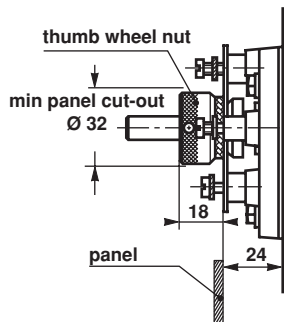
Ohmic Range	1Ω to 33kΩ
Tolerance Standard	± 10%
Power Rating	500 W at 25°C
Variation Law	Standard On request
	linear sectorial winding
Limiting Element Voltage	3500V
Dielectric Strength	3500VRMS
Insulation Resistance	10 <sup>3</sup> MΩ(500Vcc)

**LOCKING DEVICE**

This is supplied as an option.

The available spindle length is according to the panel thickness.

Order reference : DBA11.



**PARTICULAR CHARACTERISTICS**

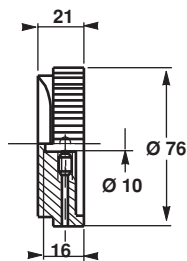
NOMINAL RESISTANCE $\Omega$	MAX. SERVICE VOLTAGE V	MAX. CURRENT THROUGH WIPER A
1	22.4	22.4
1.5	27.3	18.2
2.2	33	15
3.3	40.6	12.3
4.7	48.4	10.3
6.8	58.3	8.57
10	70.7	7.07
15	86.5	5.77
22	105	4.77
33	128	3.89
47	153.2	3.26
68	184.3	2.71
100	224	2.24
150	273	1.82
220	330	1.5
330	406	1.23
470	484	1.03
680	584.8	0.86
1k	707	0.707
1.5k	865	0.577
2.2k	1050	0.477
3.3k	1283	0.389
4.7k	1532	0.326
6.8k	1843	0.271
10k	2240	0.224
15k	2730	0.182
22k	3322	0.151
33k	3500	0.106

**SPINDLES**

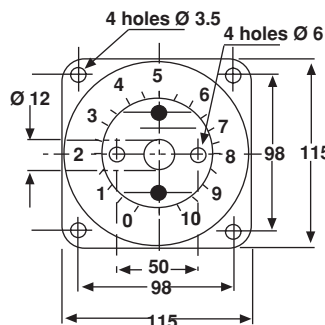
$\varnothing$ mm	DISTANCE TO MOUNTING PLATE MM	SCREW DRIVER SLOT	CODE
10	50	WITHOUT	AS

For any special requirement on request : spindle flats, etc. Please supply detailed drawing.

**COMMAND KNOB 60JF (OPTION)**



**DIAL CG115/4T (OPTION)**



**MARKING**

SFERNICE trademark, series, style, ohmic value (in  $\Omega$  or k $\Omega$ ), tolerance (in %), maximum current in A, manufacturing datemarking

**ORDERING PROCEDURE**

VITREOUS LACQUERED	RT RTE	500		L			AS	22k $\Omega$	$\pm 10\%$
	SERIES	STYLE	SPINDLE LOCKING DEVICE	VARIATION LAW	SPECIAL DESIGN	WINDING	SPINDLE (Code)	OHMIC VALUE	TOLERANCE
			Optional		Method N° Optional	Optional	for special spindles please supply detailed drawing		
OPTIONS	ACC MODEL	60JF KNOB	CG115/4 DIAL	XXX OTHER SPECIAL REQUIREMENTS					