

**PLEASE CHECK WWW.MOLEX.COM FOR LATEST PART INFORMATION**

**Part Number:** **0561878000**  
**Status:** **Active**  
**Description:** 3.30mm (.130") Pitch Crimp Terminal 56187, Female, 18-20 AWG, Reel, for 51284/51347 Housings

**Documents:**

<a href="#">3D Model</a>	<a href="#">Product Specification PS-51284-002 (PDF)</a>
<a href="#">Drawing (PDF)</a>	<a href="#">Product Specification PS-51347-001 (PDF)</a>
<a href="#">Product Specification PS-51284-001 (PDF)</a>	<a href="#">RoHS Certificate of Compliance (PDF)</a>

**General**

Product Family	Crimp Terminals
Series	56187
Crimp Quality Equipment	Yes
Product Name	N/A

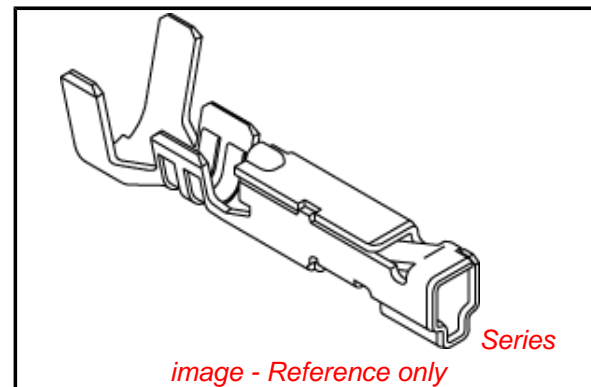
**Physical**

Gender	Female
Material - Metal	Phosphor Bronze
Material - Plating Mating	Tin
Material - Plating Termination	Tin
Packaging Type	Reel
Plating min: Mating (µin)	36
Plating min: Mating (µm)	0.90
Plating min: Termination (µin)	36
Plating min: Termination (µm)	0.90
Termination Interface: Style	Crimp or Compression
Wire Insulation Diameter	2.60mm (.102") max.
Wire Size AWG	18, 20
Wire Size mm²	N/A

**Material Info**

**Reference - Drawing Numbers**

Product Specification	PS-51284-001, PS-51284-002, PS-51347-001, RPS-51284-003, RPS-51284-004, RPS-51284-005, RPS-51284-006, RPS-51284-007, RPS-51284-008, RPS-51284-009, RPS-51284-010, RPS-51284-011, RPS-51347-002, RPS-51347-003, RPS-51347-004, RPS-51347-005, RPS-51347-006
Sales Drawing	SD-501328-001, SD-501329-001, SD-501395-001, SD-56187-002



**EU RoHS**

**ELV and RoHS Compliant**  
**REACH SVHC**  
**Contains SVHC: No**  
**Halogen-Free Status**

**China RoHS**



**Need more information on product environmental compliance?**

Email [productcompliance@molex.com](mailto:productcompliance@molex.com)  
 For a multiple part number RoHS Certificate of Compliance, [click here](#)

Please visit the [Contact Us](#) section for any non-product compliance questions.

**Search Parts in this Series**

56187Series

**Mates With**

56265 , 56279

**Use With**

51284 , 51347

**Application Tooling | FAQ**

*Tooling specifications and manuals are found by selecting the products below. Crimp Height Specifications are then contained in the Application Tooling Specification document.*

**Global**

<b>Description</b>	<b>Product #</b>
Extraction Tool	0638132700

**Japan**

<b>Description</b>	<b>Product #</b>
Applicator for M211A Bench Press, 18-26 AWG, for	0574113000

This document was generated on 04/19/2010

**PLEASE CHECK [WWW.MOLEX.COM](http://WWW.MOLEX.COM) FOR LATEST PART INFORMATION**

10 9 8 7 6 5 4 3 2 1

F

E

D

C

B

A

F

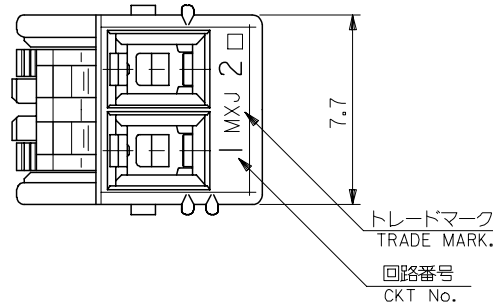
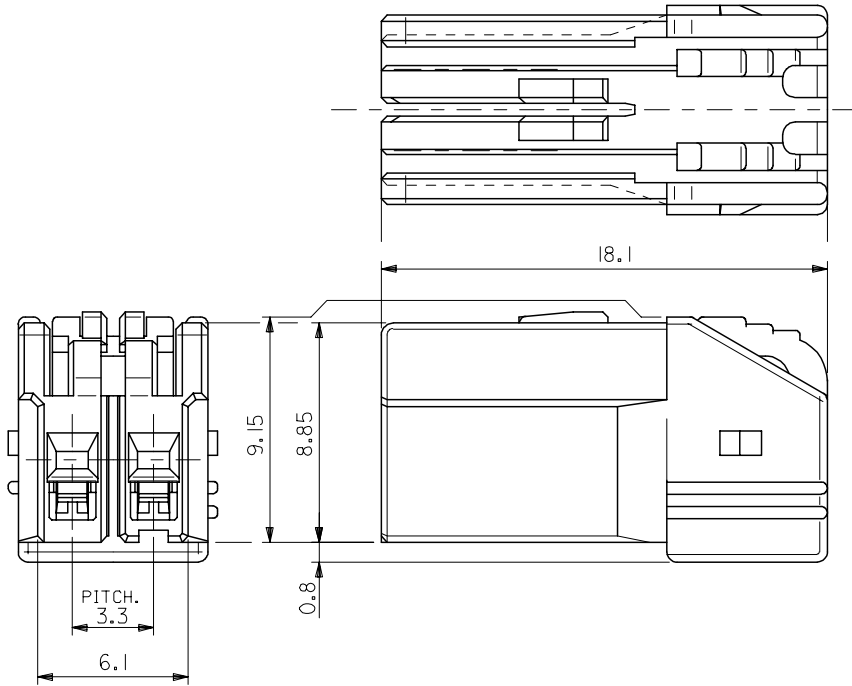
E

D

C

B

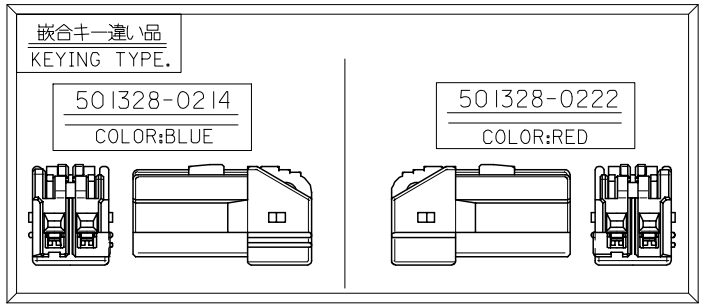
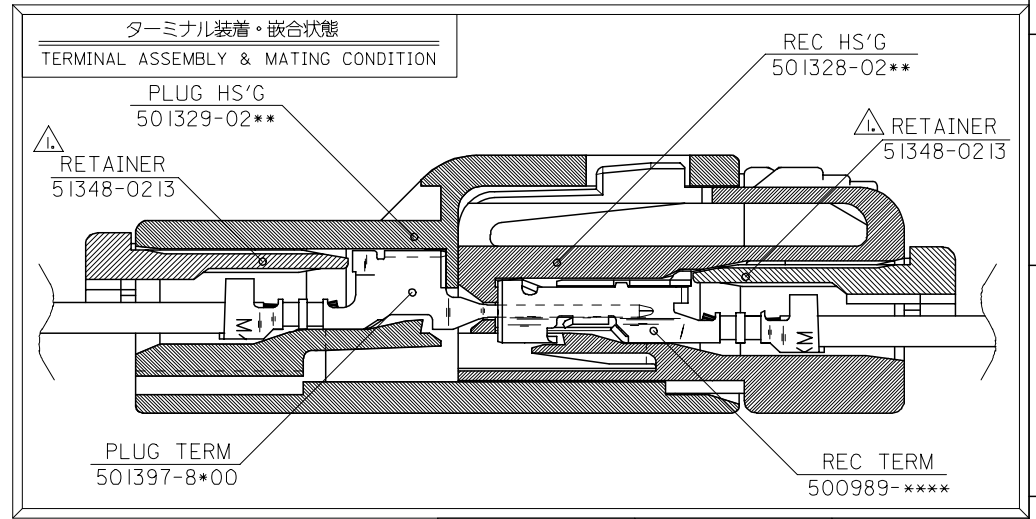
A



注記  
NOTES.

- △ 適合リテーナ : 51348-0213  
APPLICABLE RETAINER  
詳細は SD-51348-001 を参照下さい。  
REFERENCE:SD-51348-001
- 2. 材料 : NYLON66,UL94V-0  
MATERIAL

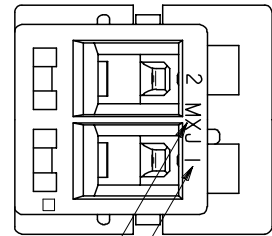
本形状は 501328-0200 を示す。  
SHAPE OF 501328-0200



BLUE	501328-0214	501328-02**
RED	501328-0222	
WHITE	501328-0200	
COLOR	MATERIAL No.	MODEL No.

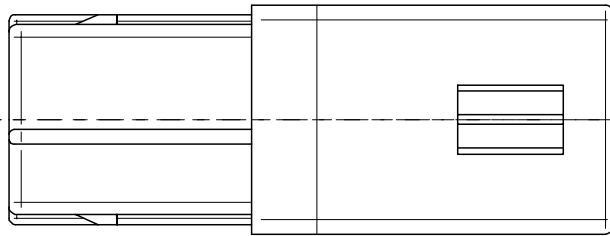
RELEASED EC NO: J2005-2177 DRWN:TODA CHKD:KASAKAWA APPR:SICHIKAWA 2005/03/31 2005/03/31 2005/03/31	GENERAL TOLERANCES (UNLESS SPECIFIED)		DIMENSION STYLE MM ONLY		SCALE 5:1	DESIGN UNITS METRIC	THIRD ANGLE PROJECTION		
	10 UNDER	±0.2	DRAWN BY T.ODA	DATE '04/09/30	TITLE 3.3 W/W INERTIA LOCK CONN REC 2CKT				
	10 OVER 30 UNDER	±0.25	CHECKED BY K.ASAKAWA	DATE '04/09/30	APPROVED BY S.ICHIKAWA				
	30 OVER	±0.3	DATE '04/09/30	MATERIAL No. SEE CHART					
ANGULAR ±3 °		DRAFT WHERE APPLICABLE MUST REMAIN WITHIN DIMENSIONS		DOCUMENT NO. SD-501328-001		SHEET NO. 1 OF 1			
THIS DRAWING CONTAINS INFORMATION THAT IS PROPRIETARY TO MOLEX INCORPORATED AND SHOULD NOT BE USED WITHOUT WRITTEN PERMISSION				MATERIAL No. SD-501328-001				SHEET NO. 1 OF 1	

10 9 8 7 6 5 4 3 2 1

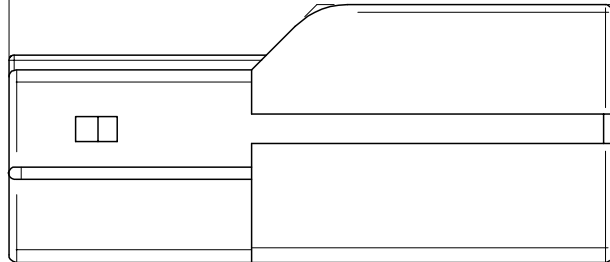


トレードマーク  
TRADE MARK.

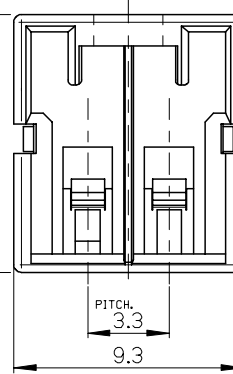
回路番号  
CKT No.



24.5



10.45

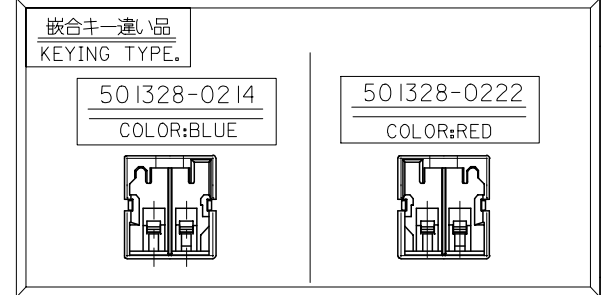
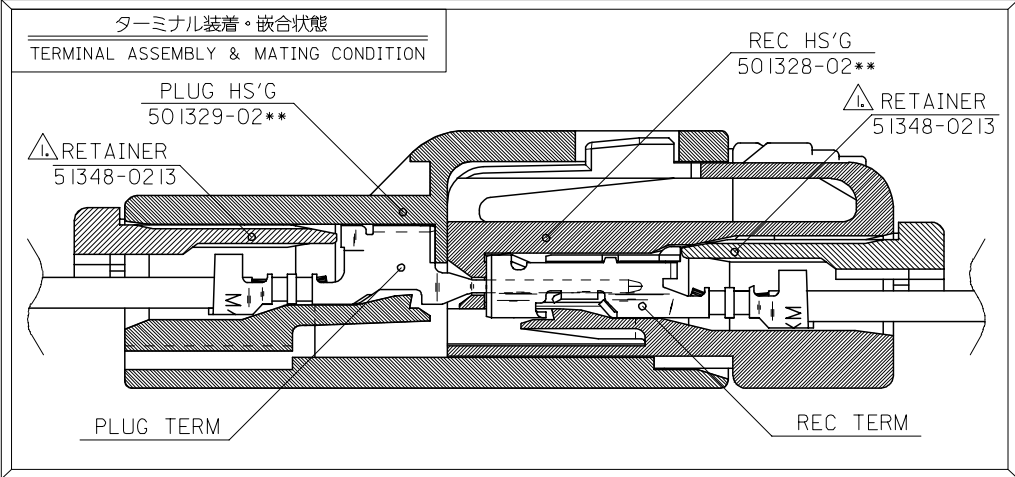


PITCH  
3.3  
9.3

注記  
NOTES.

- △ 適合リテーナ : 51348-0213  
APPLICABLE RETAINER  
詳細は SD-51348-001 を参照下さい。  
REFERENCE:SD-51348-001
- 2. 材料 : NYLON66,UL94V-0  
MATERIAL

本形状は 501329-0200 を示す。  
SHAPE OF 501329-0200

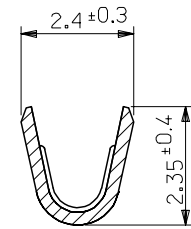
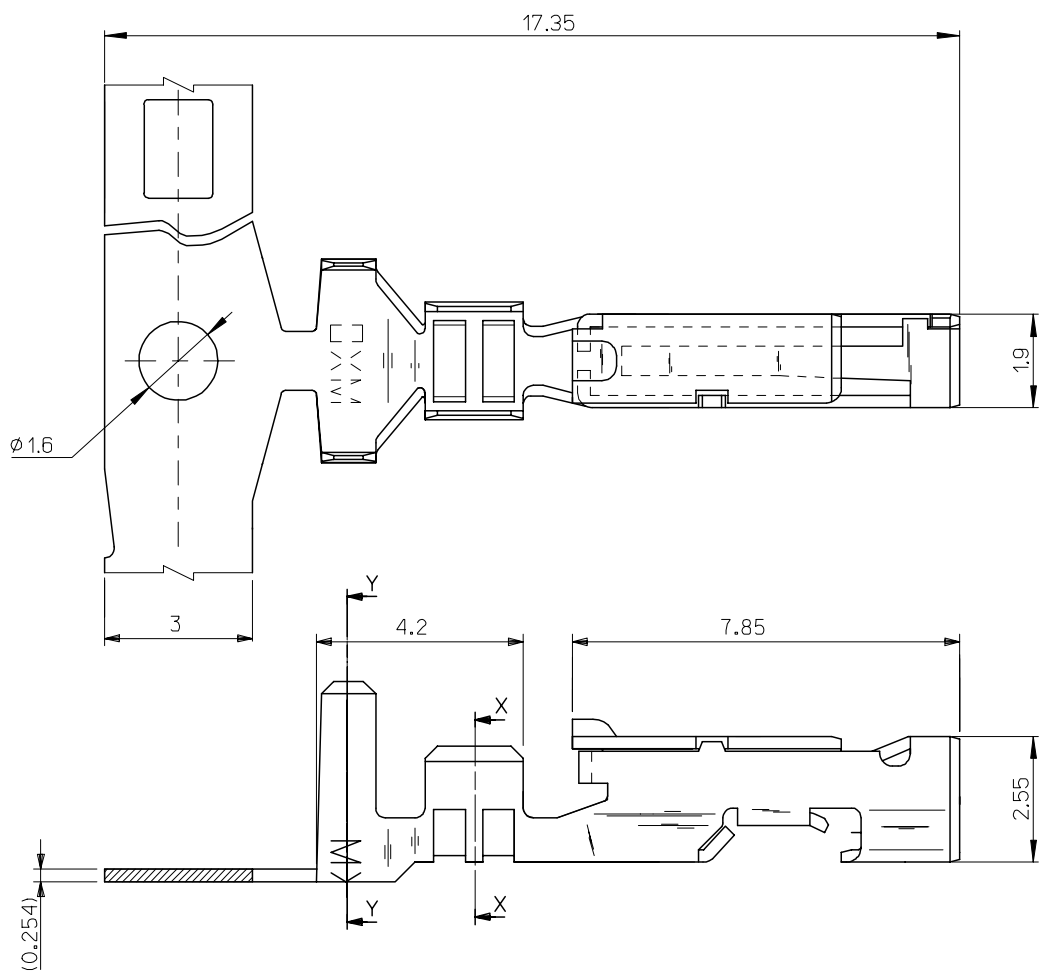


BLUE	501329-0214	501329-02**
RED	501329-0222	
WHITE	501329-0200	
COLOR	MATERIAL No.	MODEL No.

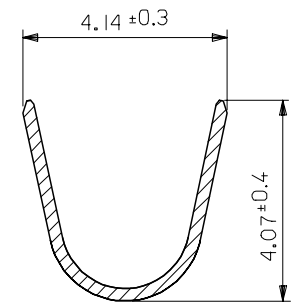
RELEASED EC NO: J2005-2177 DRWN: TODA 2005/03/31 CHKD: K.ASAKAWA 2005/03/31 APPR: S.ICHIKAWA 2005/03/31 REV: A	GENERAL TOLERANCES (UNLESS SPECIFIED)		DIMENSION STYLE MM ONLY		SCALE 5:1	DESIGN UNITS METRIC	THIRD ANGLE PROJECTION
	10 UNDER	±0.2	DRAWN BY T.ODA	DATE '04/09/30	TITLE 3.3 W/W INERTIA LOCK CONN PLUG 2CKT		
	10 OVER 30 UNDER	±0.25	CHECKED BY K.ASAKAWA	DATE '04/09/30	APPROVED BY S.ICHIKAWA		
	30 OVER	±0.3	APPROVED BY S.ICHIKAWA	DATE '04/09/30	MATERIAL NO. SEE CHART		
	ANGULAR	±3 °	DRAFT WHERE APPLICABLE MUST REMAIN WITHIN DIMENSIONS		DOCUMENT NO. SD-501329-001		SHEET NO. 1 OF 1

10 9 8 7 6 5 4 3 2 1

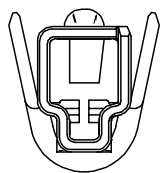
F  
E  
D  
C  
B  
A



SECTION X-X



SECTION Y-Y



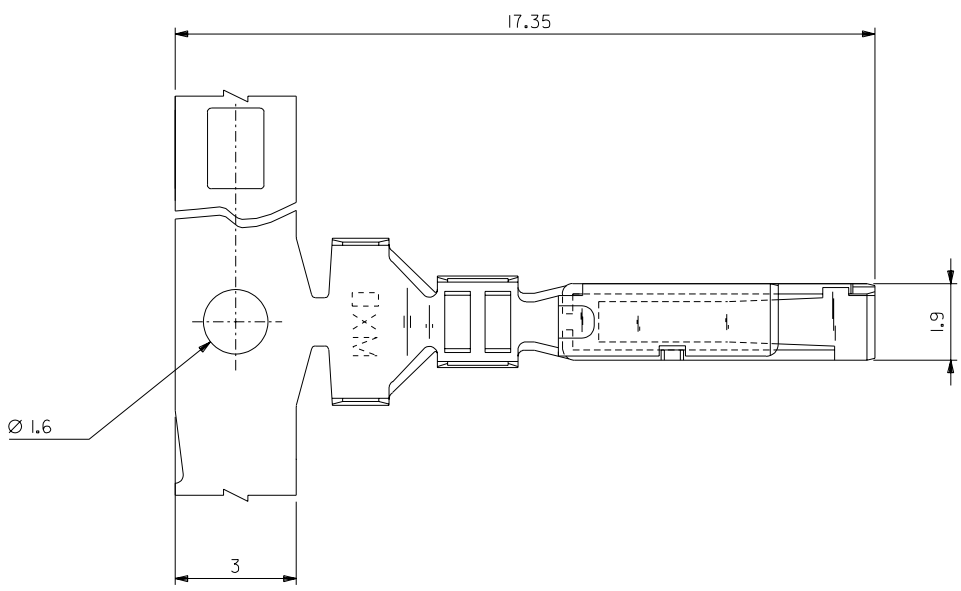
NOTES

1. 使用材料 : 銅合金、錫メッキ  
MATERIAL : PRE-TINNED COPPER ALLOY
2. 適合ハウジング : 501328-\*\*\*\*  
APPLICABLE HS'G : 51347-\*\*\*\*  
51284-\*\*\*\*
3. 適用電線サイズ : AWG#20-18  
心線外径 : 0.51-0.87  
被覆外径 : φ1.75-φ2.6

501395-1*00	501395-1100	バラ状 LOOSE
	501395-1000	連鎖状 CHAIN
MODEL NO.	MATERIAL NO.	FORM

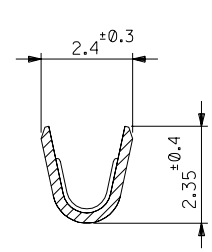
RELEASED EC NO: J2005-2177 DRWN: TODA 2005/03/31 CHKD: K.ASAKAWA 2005/03/31 APPR: S. ICHIKAWA 2005/03/31	GENERAL TOLERANCES (UNLESS SPECIFIED)		DIMENSION STYLE	SCALE	DESIGN UNITS	THIRD ANGLE PROJECTION
			MM ONLY	10:1	METRIC	
	10 UNDER	±0.2	DRAWN BY	DATE	TITLE	
	10 OVER 30 UNDER	±0.25	T. ODA	'05/02/07	3.3 W/W,W/B CONN. REC. TERMINAL	
	30 OVER	±0.3	CHECKED BY	DATE	MOLEX INCORPORATED	
ANGULAR	±3 °	K. ASAKAWA	'05/02/07	MATERIAL NO.		
DRAFT WHERE APPLICABLE MUST REMAIN WITHIN DIMENSIONS		APPROVED BY	DATE	DOCUMENT NO.		SHEET NO.
		S. ICHIKAWA	'05/02/07	SEE CHART		SD-501395-001
		MATERIAL NO.		SD-501395-001		1 OF 1
		THIS DRAWING CONTAINS INFORMATION THAT IS PROPRIETARY TO MOLEX INCORPORATED AND SHOULD NOT BE USED WITHOUT WRITTEN PERMISSION				

DWG. NO. SD-56187-002

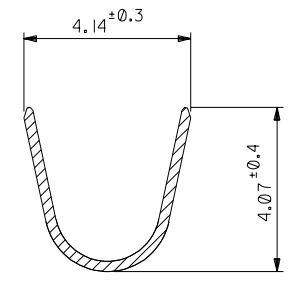


注記  
NOTES

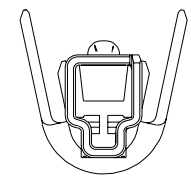
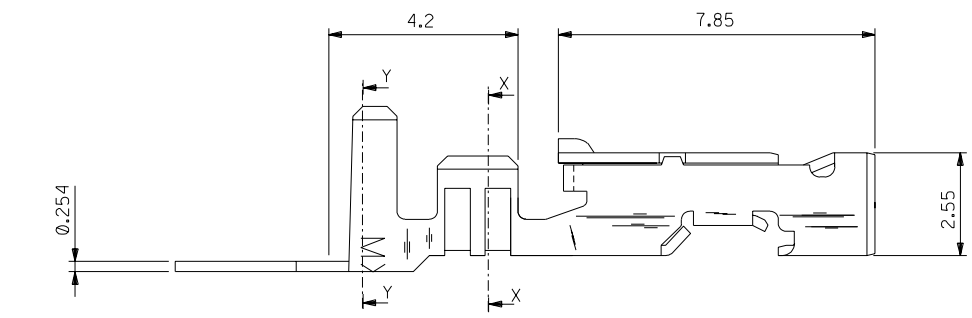
1. 使用材料 : リン青銅, 錫メッキ (t=0.254)  
MATERIAL : PRE-TINNED PHOSPHOR BRONZE (t=0.254)
2. 適合ハウジング : 51284&51347シリーズ  
APPLICABLE HOUSING : 51284 & 51347 SERIES



SECT. X-X



SECT. Y-Y



56187-8100	バラ状 LOOSE
56187-8000	連鎖状 CHAIN
MATERIAL NO.	端子形状 FORM

DO NOT SCALE DRAWING

64NO. DRWN: CH'K: APPR:  63NO. DRWN: CH'K: APPR:  62NO. DRWN: CH'K: APPR:  REVISED 61NO. J2003-2363 DRWN: H.II '03/03/14 CH'K: K.ASAKAWA APPR: T.YAMAGUCHI  RELEASED 60NO. J2002-2040 DRWN: H.II '02/02/19 CH'K: K.ASAKAWA APPR: T.YAMAGUCHI	MATERIAL 材料  注記参照 SEE NOTES  FINISH 仕上げ  //	GENERAL TOLERANCES: (UNLESS SPECIFIED) 一般公差
		WIRE RANGE 適用線径範囲  AWG #18 - #20
INS. RANGE 被覆外径  Ø2.6MAX.	DESCRIPTION  注記参照 SEE NOTES	WIRE RANGE 適用線径範囲  AWG #18 - #20

56187-8*00		MODEL NO.	DIMENSIONS:		SHT	REV
SCALE	DESIGN UNITS	20° 30° 45° 60° 75° 90° 20° 30° 45° 60° 75° 90° PROJECTION	<input type="checkbox"/> mm	<input type="checkbox"/> INCH	mm ONLY INCH ONLY	CAD ONLY
DRAWN BY & DATE H.II '02/02/18	CHECKED BY & DATE K.ASAKAWA '02/02/18		TITLE:			
30 OVER 以上 ±0.3		30 UNDER 未満 ±0.25		3.3 mm WIRE TO BOARD CONN. CRIMP RECEPTACLE		
10 UNDER 未満 ±0.2		10 OVER 以上 ±0.25		MOLEX INCORPORATED		
30 OVER 以上 ±0.3		30 UNDER 未満 ±0.25		MATERIAL NO.	DRAWING NO.	SHEET NO.
ANGLE 角度 ±3°		APPROVED BY & DATE T.YAMAGUCHI '02/02/18		SEE CHART	SD-56187-002	1 OF 1
CAD FILENAME 56187002.S01		DRAWING NO. SD-56187-002		EN-02J(097) MXJ-54		

THIS DRAWING CONTAINS INFORMATION THAT IS PROPRIETARY TO MOLEX INCORPORATED AND SHOULD NOT BE USED WITHOUT WRITTEN PERMISSION.

56187002.S01