

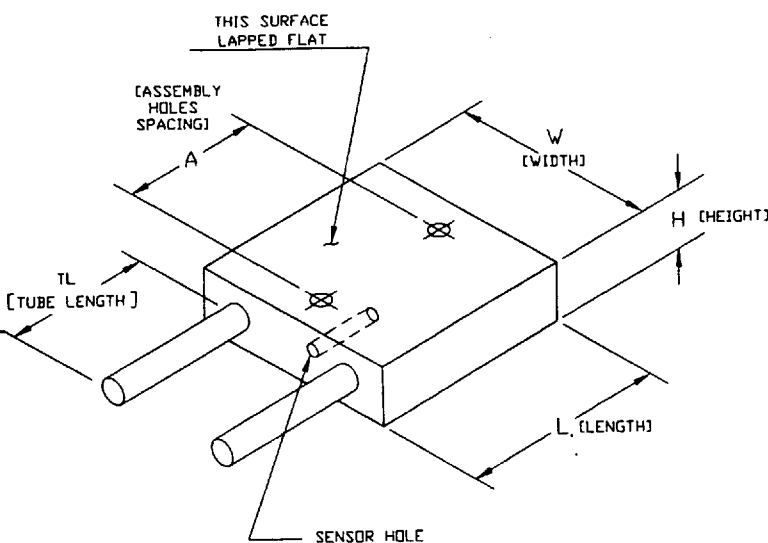
Liquid Heat Exchangers

The Melcor Coordinated Components liquid heat exchangers are designed specifically for our CP series of thermoelectric coolers (TECs). Each liquid heat exchanger is a part of a series of matching components designed to work together as a complete thermoelectric system.

Some of the features of the Liquid Heat Exchangers

- All copper construction
- Lapped finish
- Solderable surface
- Liquid I/O Tubes:
TL = 1" (25mm) Long, 0.25" (6.4mm) O.D.
Internal Waterways are 0.25" (6.4mm) Diameter
- Sensor hole for temperature monitoring
0.062" (1.58mm) diameter, 0.75" (19mm) deep
- Tapped or clearance assembly holes
Metric M3 and English 6-32

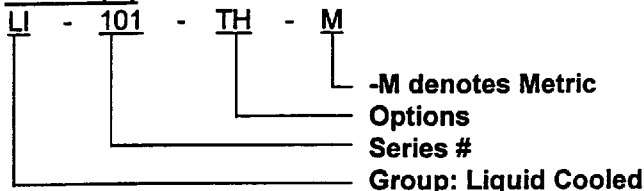
Mechanical Characteristics



Dimensions

Model	Dimensions					
	W Width		L Length		H Height	
	Inch	mm	Inch	mm	Inch	mm
LI-101	1.25	32	2.00	51	0.38	9.7
LI-102	2.00	51	1.25	32	0.38	9.7
LI-201	2.00	51	2.25	57	0.50	12.7
LI-301	2.50	64	3.50	89	0.50	12.7

Model(s)



Series #	Assembly Hole Spacing A	TEC size
-100	1.5" (38mm) O.C.	up to 1.17" (30mm)
-200	2.0" (51mm) O.C.	up to 1.57" (40mm)
-300	3.0" (76mm) O.C.	up to 2.44" (62mm)

Options	Description
NH	No Holes
CL	Clearance Holes
TH	Tapped Holes

"USES FOR THERMOELECTRIC COOLING ARE AS LIMITLESS AS THE IMAGINATION"
1040 Spruce Street * Trenton, NJ 08648 * USA * 609-393-4178 * Fax: 609-393-9461