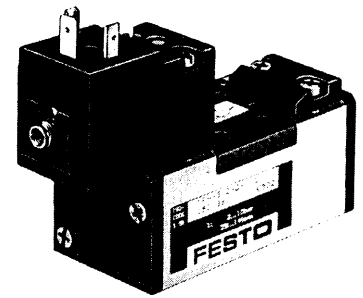


708-8450

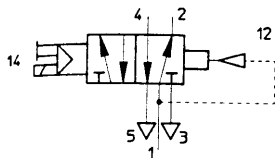


**Single solenoid valve**

without socket  
with manual override and mounting bolts,  
without sub-base

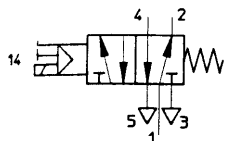
with pneumatic spring return

Type MN1H-5/2-D-1-C



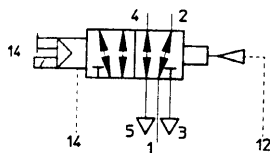
with mechanical spring return

Type MN1H-5/2-D-1-FR-C \*



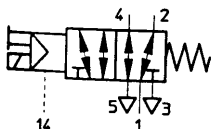
with auxiliary pilot air connection and pneumatic spring return

Type MN1H-5/2-D-1-S-C



with auxiliary pilot air connection and mechanical spring return

Type MN1H-5/2-D-1-FR-S-C



This valve series has a Festo sealing ring cartridge which guarantees extremely long service life.

When the voltage supply is switched on, the solenoid is energized and the valve is actuated.

Type MN1H-5/2-D-1-S-C and MN1H-5/2-D-1-FR-S-C

The separate auxiliary control air connection means that these valves can be used for low operating pressure and foreign gases.

**Accessories:**

Sockets and accessories see sheet 4.2/350-1.

For valve sub-bases with hole pattern to ISO 5599/1, size 1, see sheet 4.2/215-1.

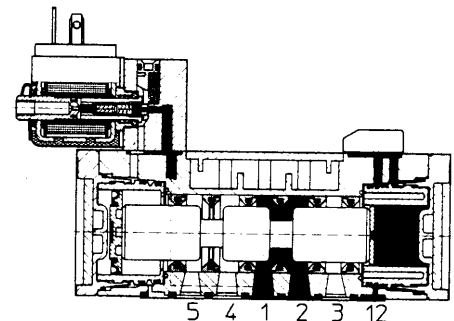
Intermediate throttling plate see sheet 4.2/262-1.

Intermediate plate with pressure regulator see sheet 4.2/263-1.

Manual override actuator, detented by turning

Order code 157 651 AHB-MD/MF/MV.

Example: Type MN1H-5/2-D-1-C



- 1 (P) = Supply port
- 4, 2 (A, B) = Working or outlet lines
- 5, 3 (R, S) = Exhaust
- 14, 12 (Pz) = Auxiliary pilot air

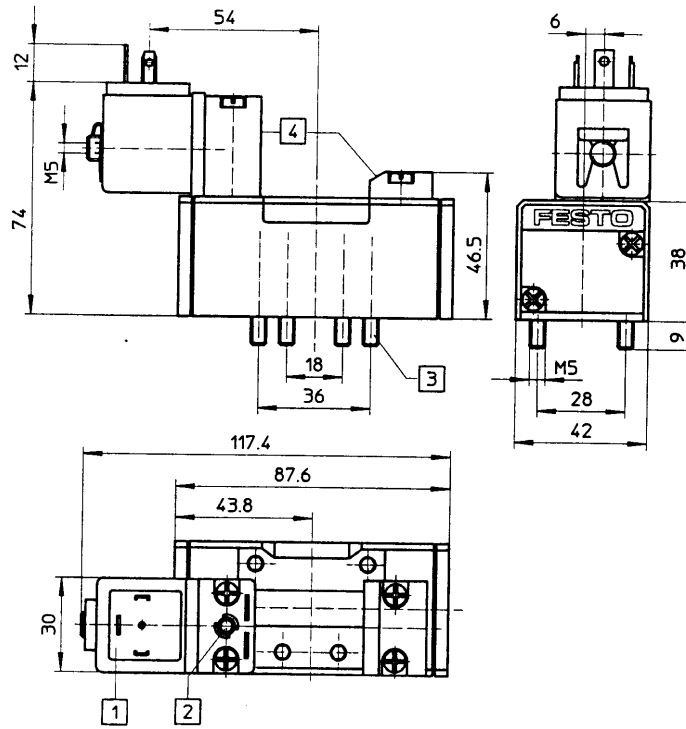
Order code	Part No./Type	159 688 MN1H-5/2-D-1-C	159 687 MN1H-5/2-D-1-FR-C	159 686 MN1H-5/2-D-1-S-C	159 716 MN1H-5/2-D-1-FR-S-C
		+ Voltage data			
Medium		Compressed air, filtered (lubricated or unlubricated)*			
Design		Spool valve with sealing ring cartridge			
Mounting		On sub-base to ISO 5599/1			
Connection		G 1/4 (sub-base)			
Nominal size		8 mm			
Standard nominal flow rate (1 → 2, 1 → 4)		1200 l/min			
Operating pressure range		2 to 10 bar	3 to 10 bar	-0.9 to +16 bar	-0.9 to +16 bar
Control pressure range		-	-	2 to 10 bar	3 to 10 bar
Response time at 6 bar	On/Off	23/32 ms	17/39 ms	23/32 ms	17/39 ms
Ambient temperature		-10 to +50 °C			
Medium temperature		-10 to +50 °C			
Material		Housing: die-cast aluminium, POM; seals: Perbunan			
Weight		0.450 kg			
DC		24 V			
AC		110 V/50 to 60 Hz, 230 V/50 to 60 Hz			
Power consumption		} solenoid coils see sheet 4.2/350-1			
Duty cycle		DC: 2.5 W; AC: pull 5 VA, hold 3.7 VA			
Degree of protection		100%			
		IP 65 (DIN 40050)			

\* Type MN1H-5/2-D-1-S-C and MN1H-5/2-D-1-FR-S-C are suitable for vacuum operation.

Subject to change

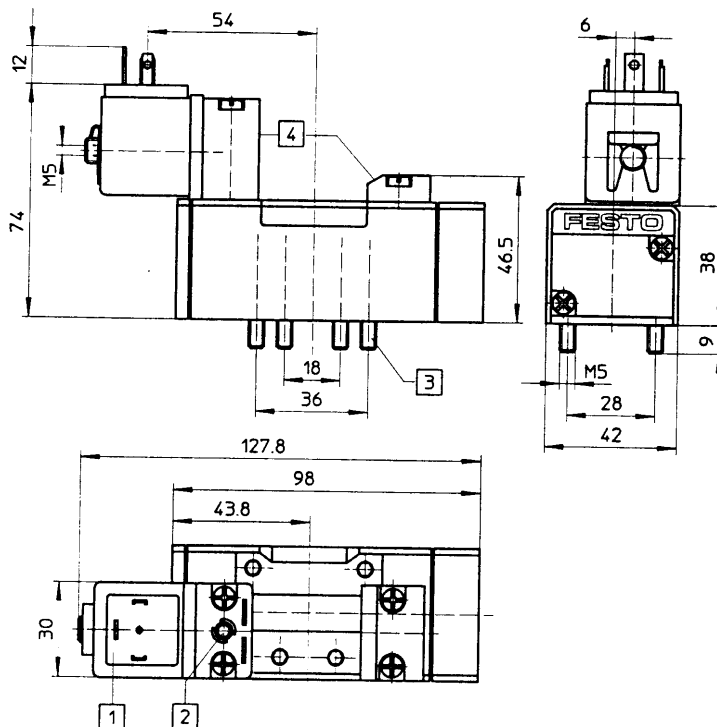
Electrically and pneumatically actuated valves  
 5/2-way valves, indirectly actuated, size 1 (G 1/4) with hole pattern to ISO 5599/1

Type MN1H-5/2-D-1-C  
 MN1H-5/2-D-1-S-C



- 1 Connection for socket to DIN 43650, design A.  
Plug socket can be repositioned by 180 degrees
- 2 Resetting manual override
- 3 Captive screws
- 4 Groove for identification plate

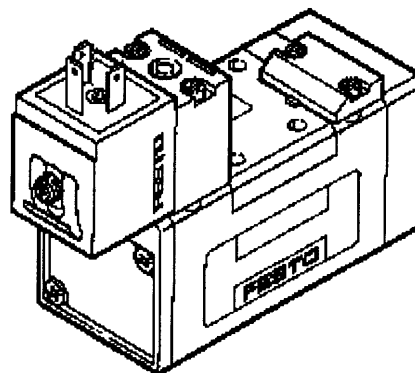
Type MN1H-5/2-D-1-FR-C  
 MN1H-5/2-D-1-FR-S-C



- 1 Connection for socket to DIN 43650, design A.  
Plug socket can be repositioned by 180 degrees
- 2 Resetting manual override
- 3 Captive screws
- 4 Groove for identification plate

## Detail view

Solenoid valve  
159687  
MN1H-5/2-D-1-FR-  
C



Criterion	Feature
Switching function	5/2-way valve
Switching function short code	5/2
Direction of flow reversible	No
Operating principle	Slide
Shape of function component	Piston
Type of regulation	Indirect
Control type	Monostable
Type of reset	Mechanical spring
Grid dimension	43 mm
Type of mounting	Screw
Nominal size	8 mm
Operating pressure min.	3 bar
Operating pressure max.	10 bar
Minimum ambient temperature	-5 °C
Maximum ambient temperature	50 °C
Minimum medium temperature	-5 °C
Maximum medium temperature	50 °C

temperature	
Type of connection, Sub-base air supply	
Air connection type Sub-base power port	
Type of connection, Sub-base exhaust	
Air connection type Internal aux. pilot air supply	
Air connection type Thread aux. pilot air exhaust	
Connecting thread for aux. pilot air exhaust	M 5
Nominal size sub-base connection	Size 1 in accordance with ISO 5599-1
Standard sub-base connection pattern	ISO 5599-1
Standard pilot connection pattern	NF66
Standard plug pattern	DIN 43650-1
Actuation/reset	Single solenoid, spring return
Manual override	Non-detenting (detenting with attachment)
Operating status display	No
Standard nominal flow rate 1 - 2	1200 l/min
Standard nominal flow rate 2 - 3	1200 l/min
Standard nominal flow rate 1 - 4	1200 l/min
Standard nominal flow rate 4 - 3/5	1200 l/min
Response time OFF/OVER (dom.)	17 ms
Response time OFF/OVER	39 ms
Voltage type	AC/DC
Nominal voltage	24 V
Nominal AC voltage	110/230
Power consumption (DC)	2,5 W

Power consumption - pull (AC)	5.0/3.7
Frequency (AC)	50/60
Medium	Compressed air, filtered 50 µm or vacuum
Pilot medium	Compressed air, filtered 5 µm (may be lubricated)
Degree of protection as per IEC 529 IP..	65 ---

© 2001 Festo AG & Co.