

PLEASE CHECK WWW.MOLEX.COM FOR LATEST PART INFORMATION

Part Number: [0010011074](#)
Status: **Active**
Overview: [kk](#)
Description: 5.08mm (.200") Pitch KK® Crimp Terminal Housing, 7 Circuits

Documents:

[3D Model](#) [Product Specification PS-99020-0087 \(PDF\)](#)
[Drawing \(PDF\)](#) [RoHS Certificate of Compliance \(PDF\)](#)

Agency Certification

CSA LR19980
 UL E29179

General

Product Family Crimp Housings
 Series [3001](#)
 Overview [kk](#)
 Product Name KK®

Physical

Circuits (maximum) 7
 Color - Resin Natural
 Flammability 94V-2
 Gender Female
 Glow-Wire Compliant No
 Material - Resin Nylon
 Number of Rows 1
 Packaging Type Bag
 Panel Mount No
 Pitch - Mating Interface (in) 0.200 In
 Pitch - Mating Interface (mm) 5.08 mm
 Temperature Range - Operating -40°C to +105°C

Solder Process Data

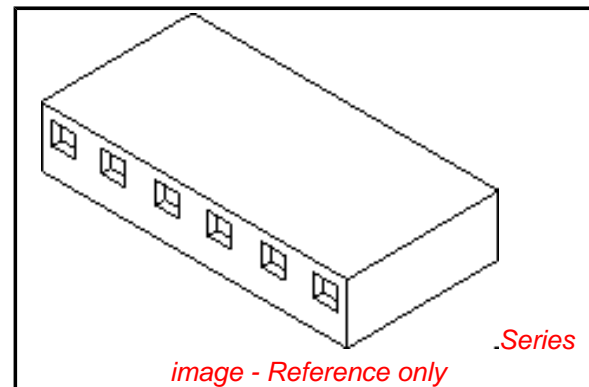
Lead-free Process Capability Wave Capable (TH only)

Material Info

Old Part Number [3001-07](#)

Reference - Drawing Numbers

Product Specification [PS-99020-0087](#)
 Sales Drawing [SDE-3001-N*](#)



EU RoHS

**ELV and RoHS
 Compliant**
REACH SVHC
 Not Reviewed
**Halogen-Free
 Status**

China RoHS



**Need more information on product
 environmental compliance?**

Email productcompliance@molex.com
 For a multiple part number RoHS Certificate of
 Compliance, [click here](#)

Please visit the [Contact Us](#) section for any
 non-product compliance questions.

Search Parts in this Series

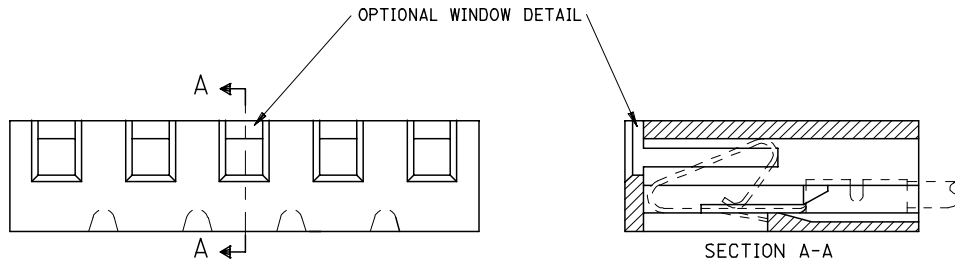
[3001Series](#)

Mates With

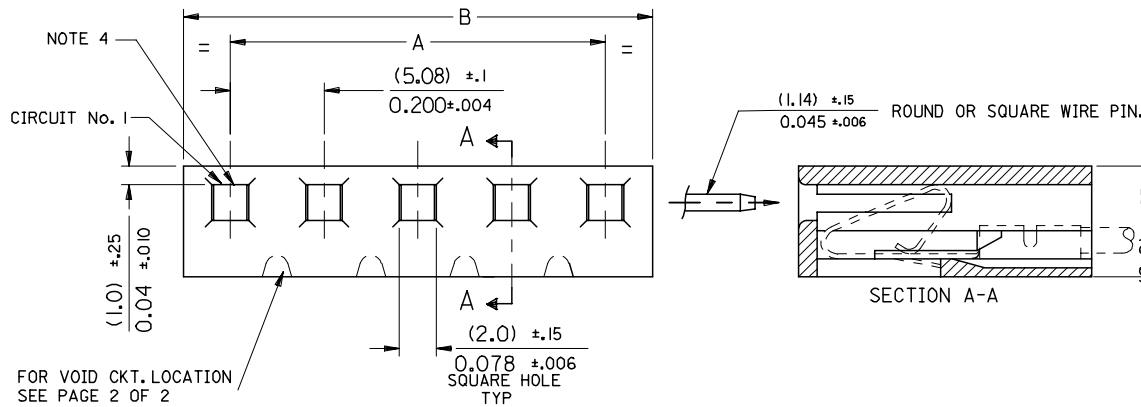
[3061](#) , [3003](#) , [3008](#)

Use With

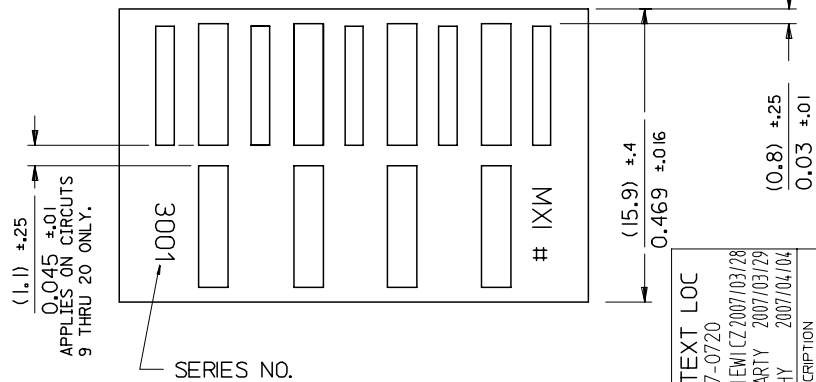
[2478](#) Crimp Terminals for 18-24 AWG, [2578](#)
 Crimp Terminals for 22-26 AWG, [2878](#)



NOTE :
 1. DIMENSIONS SHOWN MILLIMETERS INCHES
 2. FOR OTHER PRODUCT SPEC'S. SEE PSX 10-39.
 3. THIS HOUSING USES KK TERM. No's. 2478, 2578 & 28



FOR VOID CKT. LOCATION
SEE PAGE 2 OF 2



MAT'L: NYLON

CENTER RIB ONLY

| 10-01-1204 | E-3001-20 | 3.800 ±.012 | 4.000 ^{+0.006} _{-0.016} | 96.52 ±0.3 | 101.60 ^{+0.3} _{-0.4} |
|------------|-----------|-------------|---|-------------|--|
| -1194 | -19 | 3.600 ±.012 | 3.800 ^{+0.006} _{-0.016} | 91.44 ±0.3 | 96.52 ^{+0.3} _{-0.4} |
| -1184 | -18 | 3.400 ±.012 | 3.600 ^{+0.006} _{-0.016} | 86.36 ±0.3 | 91.44 ^{+0.3} _{-0.4} |
| -1174 | -17 | 3.200 ±.012 | 3.400 ^{+0.006} _{-0.016} | 81.28 ±0.3 | 86.36 ^{+0.3} _{-0.4} |
| -1164 | -16 | 3.000 ±.010 | 3.200 ^{+0.006} _{-0.016} | 76.20 ±0.25 | 81.28 ^{+0.3} _{-0.4} |
| -1154 | -15 | 2.800 ±.010 | 3.000 ^{+0.006} _{-0.016} | 71.12 ±0.25 | 76.20 ^{+0.3} _{-0.4} |
| -1144 | -14 | 2.600 ±.010 | 2.800 ^{+0.006} _{-0.016} | 66.04 ±0.25 | 71.12 ^{+0.3} _{-0.4} |
| -1134 | -13 | 2.400 ±.010 | 2.600 ^{+0.006} _{-0.016} | 60.96 ±0.25 | 66.04 ^{+0.3} _{-0.4} |
| -1124 | -12 | 2.200 ±.010 | 2.400 ^{+0.006} _{-0.016} | 55.88 ±0.25 | 60.96 ^{+0.3} _{-0.4} |
| -1114 | -11 | 2.000 ±.008 | 2.200 ^{+0.006} _{-0.012} | 50.80 ±0.20 | 55.88 ^{+0.3} _{-0.4} |
| -1104 | -10 | 1.800 ±.008 | 2.000 ^{+0.006} _{-0.008} | 45.72 ±0.20 | 50.80 ^{+0.3} _{-0.4} |
| -1094 | -9 | 1.600 ±.008 | 1.800 ^{+0.006} _{-0.008} | 40.64 ±0.20 | 45.72 ^{+0.3} _{-0.4} |
| -1084 | -8 | 1.400 ±.008 | 1.600 ^{+0.006} _{-0.008} | 35.56 ±0.20 | 40.64 ^{+0.3} _{-0.4} |
| -1074 | -7 | 1.200 ±.008 | 1.400 ^{+0.006} _{-0.008} | 30.48 ±0.20 | 35.56 ^{+0.3} _{-0.4} |
| -1064 | -6 | 1.000 ±.004 | 1.200 ^{+0.006} _{-0.008} | 25.40 ±0.10 | 30.48 ^{+0.3} _{-0.4} |
| -1054 | -5 | .800 ±.004 | 1.000 ^{+0.006} _{-0.006} | 20.32 ±0.10 | 25.40 ^{+0.3} _{-0.4} |
| -1044 | -4 | .600 ±.004 | .800 ^{+0.006} _{-0.006} | 15.24 ±0.10 | 20.32 ^{+0.3} _{-0.4} |
| -1034 | -3 | .400 ±.004 | .600 ^{+0.006} _{-0.006} | 10.16 ±0.10 | 15.24 ^{+0.3} _{-0.4} |
| -1024 | -2 | .200 ±.004 | .400 ^{+0.006} _{-0.006} | 5.08 ±0.10 | 10.16 ^{+0.3} _{-0.4} |
| 10-01-1014 | E-3001-1 | | .200 ^{+0.006} _{-0.006} | | 5.08 ^{+0.3} _{-0.4} |
| PART No. | ENG. No. | ENGLISH | | METRIC | |
| | | A | B | A | B |

CORRECT TEXT LOC
 EC NO: E2007-0720
 DRWN: DWASZKI EMI CZ 2007/03/28
 CHKD: D. MOR ARTY 2007/03/29
 APPR: DENNEHY 2007/04/04

QUALITY SYMBOLS
 ▽=0
 ▽=0

GENERAL TOLERANCES (UNLESS SPECIFIED)

| | mm | INCH |
|----------|--------|-------|
| 4 PLACES | ± --- | ± --- |
| 3 PLACES | ± --- | ±.010 |
| 2 PLACES | ± 0.25 | ±.014 |
| 1 PLACE | ± 0.35 | ± --- |

ANGULAR ±1/2°

DRAFT WHERE APPLICABLE
MUST REMAIN WITHIN DIMENSIONS

DIMENSION STYLE
MM/IN

SCALE
7:1

DESIGN UNITS
METRIC

THIRD ANGLE PROJECTION

DRAWN BY P. MOORE DATE 1998/09/15
 CHECKED BY MGOONEY DATE 1999/03/12
 APPROVED BY MWILHITE DATE 1999/03/12

TITLE
5.08MM KK CRP TERM HSG

MATERIAL NO. SEE CHART
 DOCUMENT NO. SDE-3001-N-*
 SHEET NO. 1 OF 1

THIS DRAWING CONTAINS INFORMATION THAT IS PROPRIETARY TO MOLEX INCORPORATED AND SHOULD NOT BE USED WITHOUT WRITTEN PERMISSION

