

**PLEASE CHECK WWW.MOLEX.COM FOR LATEST PART INFORMATION**

**Part Number:** [0737824300](#)  
**Status:** **Active**  
**Overview:** [hdm](#)  
**Description:** 2.00mm (.079") Pitch HDM® Board-to-Board Stacking Header, High Rise Vertical, SMC, Closed End Option, 72 Circuits

**Documents:**

[3D Model](#) [Product Specification PS-73780-999 \(PDF\)](#)  
[Drawing \(PDF\)](#) [RoHS Certificate of Compliance \(PDF\)](#)

**Agency Certification**

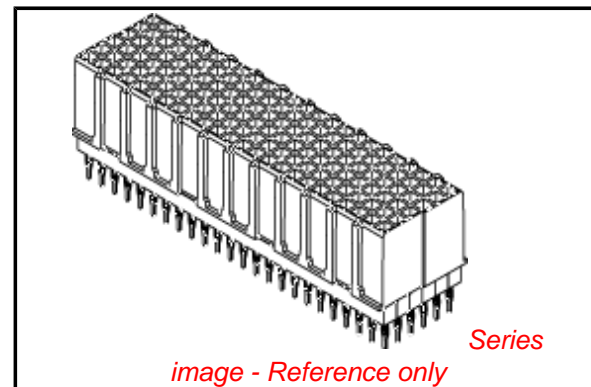
CSA LR19980  
 UL E29179

**General**

Product Family Backplane Connectors  
 Series [73782](#)  
 Application Backplane, Mezzanine  
 Component Type PCB Header  
 Overview [hdm](#)  
 Product Name HDM®  
 Style N/A

**Physical**

Circuits (Loaded) 72  
 Circuits (maximum) 72  
 Color - Resin Black  
 Durability (mating cycles max) 200  
 First Mate / Last Break No  
 Flammability 94V-0  
 Guide to Mating Part No  
 Keying to Mating Part None  
 Material - Metal Phosphor Bronze  
 Material - Plating Mating Gold  
 Material - Plating Termination Tin-Lead  
 Material - Resin High Temperature Thermoplastic  
 Number of Columns 12  
 Number of Pairs Open Pin Field  
 Number of Rows 6  
 Orientation Vertical  
 PC Tail Length (in) 0.118 In  
 PC Tail Length (mm) 3.00 mm  
 PCB Retention None  
 PCB Thickness Recommended (in) 0.055 In  
 PCB Thickness Recommended (mm) 1.40 mm  
 Packaging Type Tube  
 Pitch - Mating Interface (in) 0.079 In  
 Pitch - Mating Interface (mm) 2.00 mm  
 Plating min: Mating (µin) 30  
 Plating min: Mating (µm) 0.75  
 Plating min: Termination (µin) 100  
 Plating min: Termination (µm) 2.5  
 Polarized to PCB No  
 Stackable Yes  
 Surface Mount Compatible (SMC) Yes  
 Temperature Range - Operating -55°C to +105°C



**EU RoHS**

**ELV and RoHS Compliant**  
**REACH SVHC Contains SVHC: No**  
**Halogen-Free Status**  
**Not Reviewed**

**China RoHS**



**Need more information on product environmental compliance?**

Email [productcompliance@molex.com](mailto:productcompliance@molex.com)  
 For a multiple part number RoHS Certificate of Compliance, [click here](#)

Please visit the [Contact Us](#) section for any non-product compliance questions.

**Search Parts in this Series**

[73782Series](#)

**Mates With**

[73632](#) HDM PLUS® Board-to-Board Daughtercard Receptacle. [73780](#) HDM® Board-to-Board Daughtercard Receptacle

Termination Interface: Style Through Hole

### **Electrical**

|                               |          |
|-------------------------------|----------|
| Current - Maximum per Contact | 1A       |
| Data Rate                     | 1.0 Gbps |
| Real Signals (per 25mm)       | 72       |
| Voltage - Maximum             | 100V AC  |

### **Solder Process Data**

|  |                        |
|--|------------------------|
| Duration at Max. Process Temperature (seconds) | 5                      |
| Lead-free Process Capability                   | Wave Capable (TH only) |
| Max. Cycles at Max. Process Temperature        | 1                      |
| Process Temperature max. C                     | 260                    |

### **Material Info**

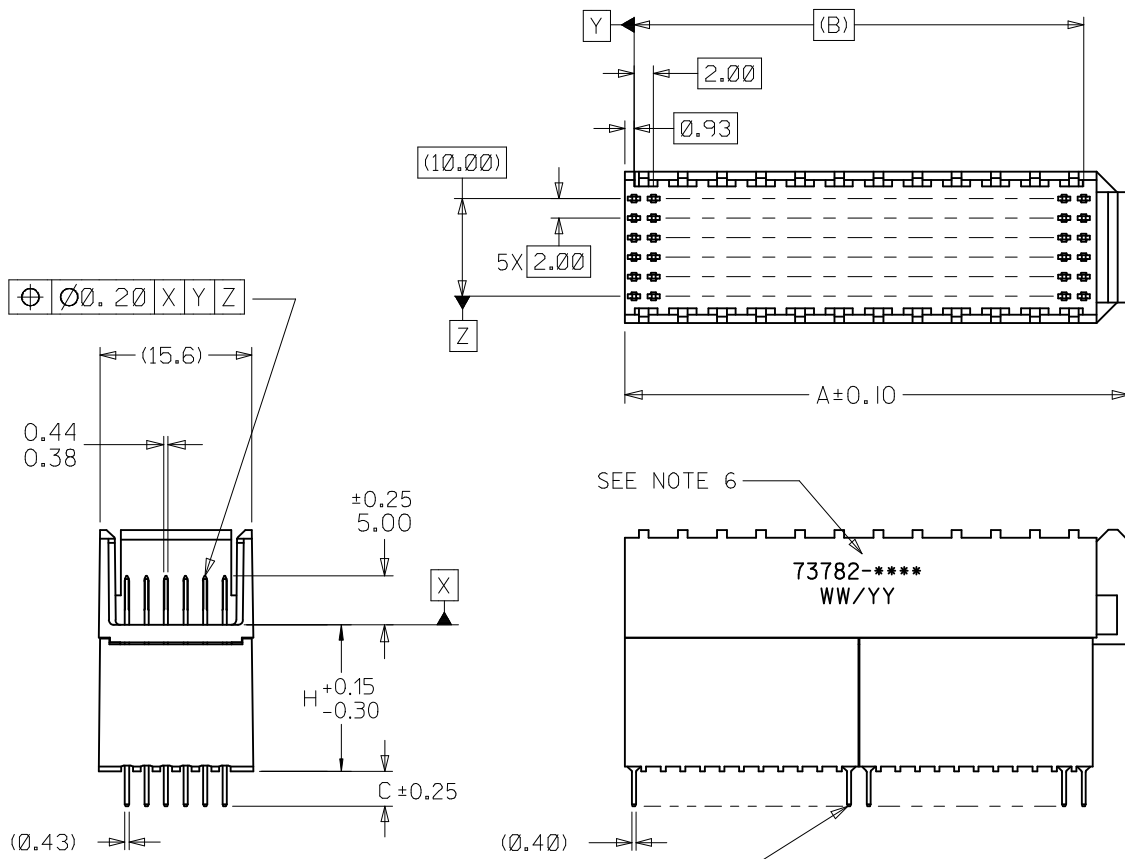
#### **Reference - Drawing Numbers**

|                         |               |
|-------------------------|---------------|
| Packaging Specification | PK-70873-0871 |
| Product Specification   | PS-73780-999  |
| Sales Drawing           | SD-73782-001  |

HDM and High Density Metric are trademarks of Amphenol Corporation

This document was generated on 05/14/2010

**PLEASE CHECK [WWW.MOLEX.COM](http://WWW.MOLEX.COM) FOR LATEST PART INFORMATION**



**NOTES:**

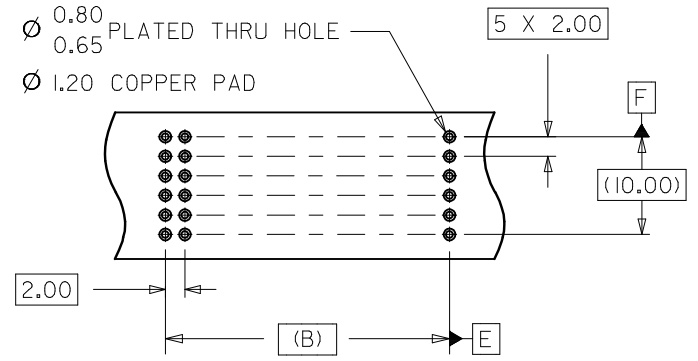
1. MATERIALS: HOUSING-LIQUID CRYSTAL POLYMER (LCP), GLASS-FILLED, UL94V-0, COLOR: BLACK. TERMINAL-PHOSPHOR BRONZE
2. FINISH:  
0.75 MICROMETERS MINIMUM SELECTIVE GOLD IN MATING AREA  
2.50 MICROMETERS MINIMUM SELECTIVE TIN IN TAIL AREA  
NICKEL UNDERPLATE OVERALL.
3. THIS PART CONFORMS TO MOLEX PRODUCT SPECIFICATION PS-73780-999.
4. THIS PART CONFORMS TO MOLEX COSMETIC SPECIFICATION PS-45499-002 CLASS C.
5. PACKAGE PER PK-70873-0870, PK-70873-0871, OR PK-70873-0875.
6. PARTS MARKED WITH PART NUMBER AND DATE CODE APPROXIMATELY WHERE SHOWN.

⊕ Ø0.15 ⊕ E F

Ø 0.838 DRILL

Ø 0.80  
0.65 PLATED THRU HOLE

Ø 1.20 COPPER PAD



BACKPLANE HOLE PATTERN

SEE NOTE 6

|   |                 |   |   |   |  |                        |  |  |  |
|---|-----------------|---|---|---|--|------------------------|--|--|--|
| REVISE DIM H TOL<br>EC NO: UCP2008-3186<br>DRWN:SDANNELLEY 2008/07/29<br>CHKD:MS:IBARRA 2008/09/11<br>APPR:SMILLER 2008/09/16 | QUALITY SYMBOLS | GENERAL TOLERANCES (UNLESS SPECIFIED)   | DIMENSION STYLE   | SCALE   | DESIGN UNITS   | THIRD ANGLE PROJECTION |  |  |  |
|   | ▽=0<br>∇=0      | mm INCH   | MM ONLY   | 2:1   | METRIC   |                        |  |  |  |
|   |                 | 4 PLACES ± --- ± ---<br>3 PLACES ± --- ± ---<br>2 PLACES ± 0.05 ± ---<br>1 PLACE ± 0.10 ± --- | DRAWN BY DATE<br>JB INGHAM 1997/04/25<br>CHECKED BY DATE<br>SREED 1997/04/25<br>APPROVED BY DATE<br>CB IXLER 1997/04/25 | TITLE   | SALES ASSEMBLY, HDM<br>BACKPLANE STACKING MOD<br>CLOSED END SOLDER |                        |  |  |  |
|   |                 | ANGULAR ±1/2°   | MATERIAL NO.  | DOCUMENT NO.  | MOLEX INCORPORATED   |                        |  |  |  |
|   |                 | DRAFT WHERE APPLICABLE<br>MUST REMAIN<br>WITHIN DIMENSIONS                                    | SEE TABLE   |   |  | SHEET NO.<br>1 OF 2    |  |  |  |
|   |                 |   | SIZE B  | THIS DRAWING CONTAINS INFORMATION THAT IS PROPRIETARY TO MOLEX INCORPORATED AND SHOULD NOT BE USED WITHOUT WRITTEN PERMISSION |  |                        |  |  |  |

MATERIAL NUMBER ASSIGNMENT

73782-\* \* 0 0

| NUMBER | CIRCUIT SIZE | DIM "A" | DIM "B" | DIM "C" |
|--------|--------------|---------|---------|---------|
| 0      | 72           | 27.6    | 22.00   | 2.0     |
| 1      | 144          | 51.6    | 46.00   | 2.0     |
| 2      | 72           | 27.6    | 22.00   | 2.5     |
| 3      | 144          | 51.6    | 46.00   | 2.5     |
| 4      | 72           | 27.6    | 22.00   | 3.0     |
| 5      | 144          | 51.6    | 46.00   | 3.0     |
| 6      | 72           | 27.6    | 22.00   | 3.5     |
| 7      | 144          | 51.6    | 46.00   | 3.5     |

| NUMBER | DIM "H" |
|--------|---------|
| 1      | 15.05   |
| 2      | 6.05    |
| 3      | 10.05   |

|   |                 |  |                 |  |              |   |
|---|-----------------|--|-----------------|--|--------------|---|
| SEE SHEET 1<br>EC NO: UCP2008-3186<br>DRWN: SPANNELLY 2008/07/29<br>CHKD: MSIBARRA 2008/09/11<br>APPR: SMILLER 2008/09/16 | QUALITY SYMBOLS | GENERAL TOLERANCES (UNLESS SPECIFIED)  | DIMENSION STYLE | SCALE  | DESIGN UNITS | THIRD ANGLE PROJECTION  |
|   | ▼=0<br>▽=0      | mm INCH<br>4 PLACES ± --- ± ---<br>3 PLACES ± --- ± ---<br>2 PLACES ± 0.05 ± ---<br>1 PLACE ± 0.10 ± ---<br>ANGULAR ± 1/2° | MM ONLY         | 1:1  | METRIC       | DRAWN BY DATE<br>JB INGHAM 1997/04/25<br>CHECKED BY DATE<br>SREED 1997/04/25<br>APPROVED BY DATE<br>CB IXLER 1997/04/25       |
|   | DESCRIPTION     | DRAFT WHERE APPLICABLE MUST REMAIN WITHIN DIMENSIONS   | MATERIAL NO.    | TITLE  |              | MOLEX INCORPORATED<br>DOCUMENT NO. SD-73782-001   |
|   | REV             |  | SIZE B          | SALES ASSEMBLY, HDM BACKPLANE STACKING MOD CLOSED END SOLDER<br>MOLEX INCORPORATED<br>SHEET NO. 2 OF 2 |              | THIS DRAWING CONTAINS INFORMATION THAT IS PROPRIETARY TO MOLEX INCORPORATED AND SHOULD NOT BE USED WITHOUT WRITTEN PERMISSION |

73782-\* \* 0 0

## MATERIAL NUMBER ASSIGNMENT

| NUMBER | CIRCUIT SIZE | DIM "A" | DIM "B" | DIM "C" |
|--------|--------------|---------|---------|---------|
| 0      | 72           | 27.6    | 22.00   | 2.0     |
| 1      | 144          | 51.6    | 46.00   | 2.0     |
| 2      | 72           | 27.6    | 22.00   | 2.5     |
| 3      | 144          | 51.6    | 46.00   | 2.5     |
| 4      | 72           | 27.6    | 22.00   | 3.0     |
| 5      | 144          | 51.6    | 46.00   | 3.0     |
| 6      | 72           | 27.6    | 22.00   | 3.5     |
| 7      | 144          | 51.6    | 46.00   | 3.5     |

| NUMBER | DIM "H" |
|--------|---------|
| 1      | 15.05   |
| 2      | 6.05    |
| 3      | 10.05   |

|   |                                  |   |   |  |  |  |                |                       |  |
|---|----------------------------------|---|---|--|--|--|----------------|-----------------------|--|
| SEE SHEET 1<br>EC NO: UDT2000-1073<br>DRWN: BINGHAM 00/05/08<br>CHK: REED 00/05/08<br>APPR: BIXLER 00/05/08 | DESCRIPTION<br>MAJOR<br>CRITICAL | QUALITY SYMBOLS<br>MAJOR $\nabla = 0$<br>CRITICAL $\nabla C = 0$  | GENERAL TOLERANCES:<br>(UNLESS SPECIFIED)   | SCALE<br>NO: NE  | DESIGN UNITS<br><input checked="" type="checkbox"/> mm <input type="checkbox"/> INCH   | DIMENSIONS:<br><input type="checkbox"/> mm INCH <input type="checkbox"/> INCH mm <input checked="" type="checkbox"/> mm ONLY | SHT            | REV                   |  |
|   |                                  | 4 PLACES $\pm 0.$ $\pm.$<br>3 PLACES $\pm 0.$ $\pm.$<br>2 PLACES $\pm 0.N/A$ $\pm.$<br>1 PLACE $\pm 0.NA/$ $\pm.$ | DRAWN BY & DATE<br>JBINGHAM 97/04/25<br>CHECKED BY & DATE<br>SREED 97/04/25<br>APPROVED BY & DATE<br>CBIXLER 97/04/25 | TITLE:<br>SALES ASSEMBLY<br>HDM BACKPLANE STACKING MODULE<br>CLOSED END OPTION SOLDER TAIL |  | THIRD ANGLE PROJECTION<br><input checked="" type="checkbox"/> THIRD ANGLE <input type="checkbox"/> FIRST ANGLE               |                | REVISIONS ON CAD ONLY |  |
|   |                                  | ANGULAR: $\pm$ $^{\circ}$   | CAD FILENAME<br>S73782X2.DGN  | MATERIAL NO.<br>SEE CHART  |  | DRAWING NO.<br>SD-73782-001  | SHEET NO.<br>2 | SIZE<br>B             |  |
|   |                                  | DRAFT WHERE APPLICABLE MUST REMAIN WITHIN DIMENSIONS  |   |  | THIS DRAWING CONTAINS INFORMATION THAT IS PROPRIETARY TO MOLEX INCORPORATED AND SHOULD NOT BE USED WITHOUT WRITTEN PERMISSION. |  |                |                       |  |