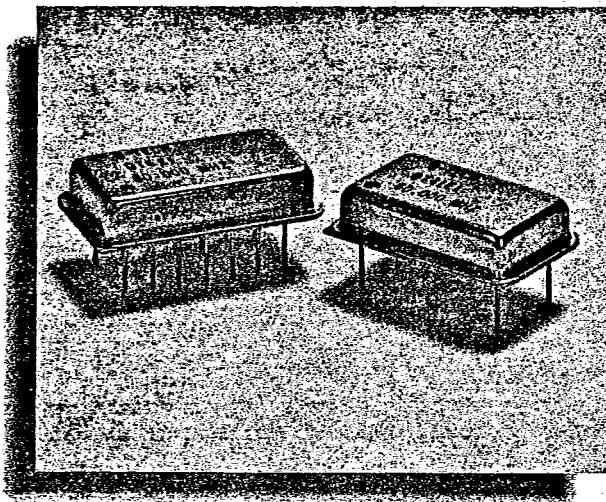
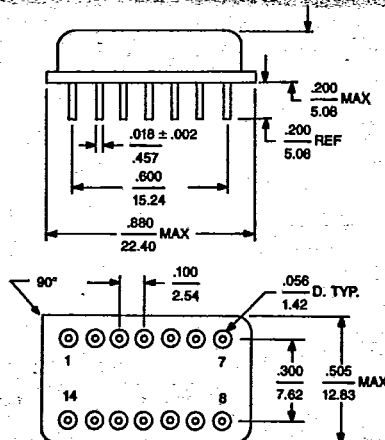
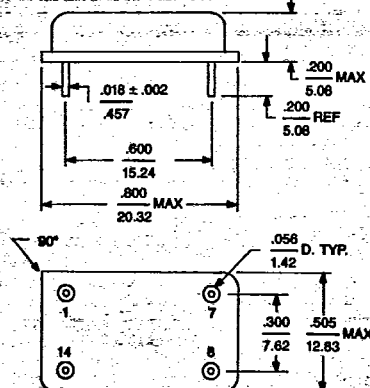


## QT6E1 and QT41E1 Series

**ECL Oscillators****QT6E1****QT41E1**

- Upper dimensions in inches.
- Lower dimensions in millimeters.

**Features:**

- 4 pin & 14 pin DIP in hermetically sealed packages.
- Low profile: .200 inches max.
- Metal case, corrosion resistant.
- Quick delivery.\*
- Military requirements & screenings available.

\* 2 weeks on standard frequencies. Please call for stock availability.

**Specifications:**

- Frequency Range: 40 MHz to 110 MHz
- Supply Voltage: -5.2V
- Supply Current: 35mA typical
- Duty Cycle: 50 ± 10%
- Load & Logic Level: compatible with standard ECL<sup>(1)</sup>
- Operating Temperature: 0°C to 70°C
- Aging and Stability<sup>(2)</sup>: ± 10 PPM/year, ± 100PPM over temperature.

- Package Options: Model QT6E1 (14 pin DIP)  
Model QT41E1 (4 pin DIP)

- Standard pinouts: ① NC, ② GND, ③ OUTPUT & ④ Vcc

**Notes:** (1) 10K std., 100K available on special order  
(2) For other stability versus temperature options, refer to general catalog or contact factory.

**To Order:****Specify:****MODEL #****FREQUENCY****Example:**

QT6E1 - 80.000 MHz

**Note:**

If you have a requirement not covered in this spec sheet, please refer to general catalog or contact factory.

**Q-Tech Corporation**

2201 Carmelina Avenue • Los Angeles, CA 90064-1093, USA • (213) 820-4921 • Telex: 69-6140 • FAX (213) 207-2248