

SPECIFICATIONS

ELECTRICAL

RESISTANCE RANGE ----- SEE CHART
 RESISTANCE TOLERANCE ----- ±3%
 LINEARITY TOLERANCE ----- ±0.25%
 RESOLUTION ----- SEE CHART
 END RESISTANCE AT TERM. ----- 1 OHM OR 0.1%
 ELECTRICAL ANGLE ----- 3600±5°
 ELECTRICAL NOISE ----- 100 OHM MAX.
 POWER RATING ----- 1.5 WATTS
 MAXIMUM VOLTAGE ----- 450 VOLTS
 INSULATION RESISTANCE ----- 1,000 MEGOHMS @ 500 V.D.C.
 DIELECTRIC STRENGTH ----- 1,000 V.A.C.

MECHANICAL

NUMBER OF TURNS ----- 10
 MECHANICAL ANGLE ----- 3600±15°-0°
 TORQUE ----- 0.4 OZ. IN. MAX.
 STOP STRENGTH ----- 20 OZ. IN. MAX.
 WEIGHT ----- 0.35 OZ.

ENVIRONMENTAL

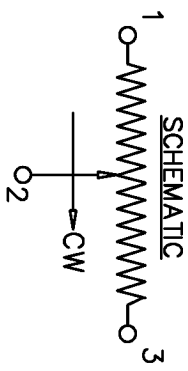
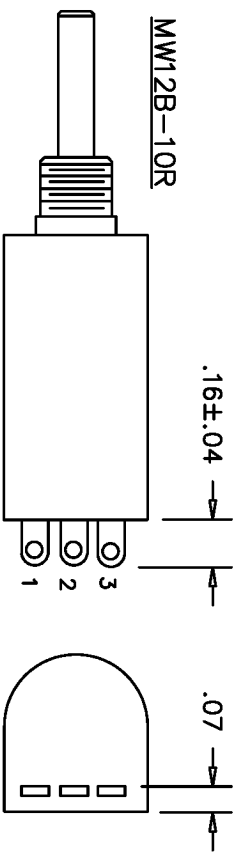
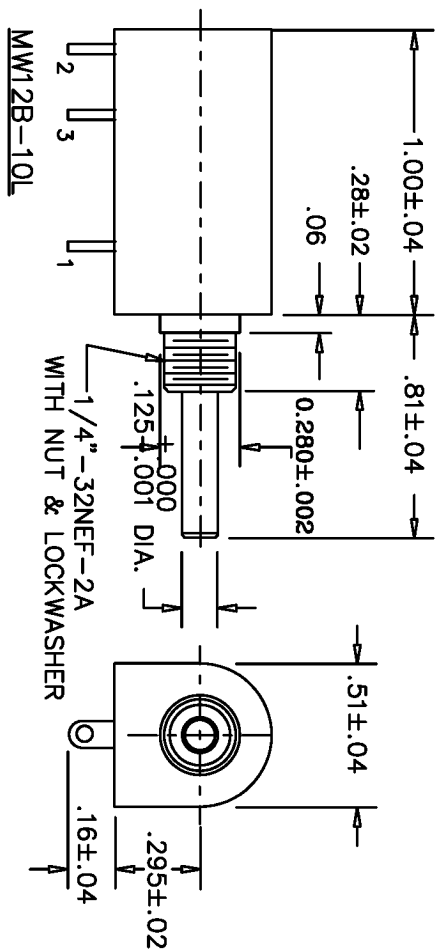
OPERATING TEMPERATURE ----- -55°C to +105°C
 TEMPERATURE COEFFICIENT ----- SEE CHART
 VIBRATION ----- 10HZ TO 2000HZ 15G
 SHOCK ----- 50G 11ms
 MOISTURE RESISTANCE ----- 40°C 95%RH 120 HOURS
 ROTATIONAL LIFE ----- 1,000,000 SHAFT REVOLUTIONS

MATERIALS

HOUSING ----- HIGH TEMPERATURE PLASTIC
 SHAFT ----- STAINLESS STEEL
 BUSHING ----- BRASS
 TERMINALS ----- GOLD PLATED
 ELEMENT ----- WIREWOUND

RESISTANCE	20	50	100	200	500	1K	2K	5K	10K	20K	50K	100K
RESOLUTION	.070	.050	.059	.054	.039	.040	.033	.024	.021	.016	.012	.009
TEMPERATURE COEFFICIENT, PPM/°C	700	700	80	80	80	20	20	20	20	20	20	20

REV.	BY	DATE	PART NO.
C	BT	11-21 87	MW12B-10
			MECH. ANGLE WAS 3600±5° ADDED OPERATING TEMPERATURE



THIS DOCUMENT CONTAINS PROPRIETARY DATA OF POLARIS INDUSTRIAL ENTERPRISES, INC. NO DISCLOSURE, REPRODUCTION, OR USE OF ANY PART THERE OF MAY BE MADE EXCEPT BY WRITTEN PERMISSION.

TOLERANCES

XX = +/- .010" FRACT. = +/- 1/64"
 XXX = +/- .005" ANGLES = +/- 1/2°
 ALL SPECIFICATIONS SUBJECT TO CHANGE WITHOUT NOTICE.

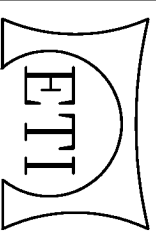
SCALE NONE
 DATE: 4-3-79
 BY

APPRVD BT

CODE IDENT: 19477

TITLE
 MULTI-TURN
 POTENTIOMETER

PART NO. MW12B-10



CARLSBAD CALIFORNIA

PART NO. MW12B-10