

**FEATURES AND SPECIFICATIONS**

**Features and Benefits**

- Sizes 4 to 50 circuits
- Fully shrouded to protect pins during mating/unmating
- Center slot for polarization
- Front latches for mechanical locking
- Center polarization slot (6 to 12 circuits); center polarization slot and front latches (14 to 50 circuits)

**Reference Information**

Product Specification: PS-87331  
 Packaging: Tube  
 UL File No.: E29179  
 CSA File No.: LR19980  
 Mates With: 50394, 51110 and 87568  
 Designed In: Millimeters

**Electrical**

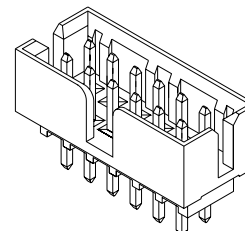
Current: 2.0A  
 Dielectric Withstanding Voltage: 1000V  
 Insulation Resistance: 1000 MΩ min.

**Physical**

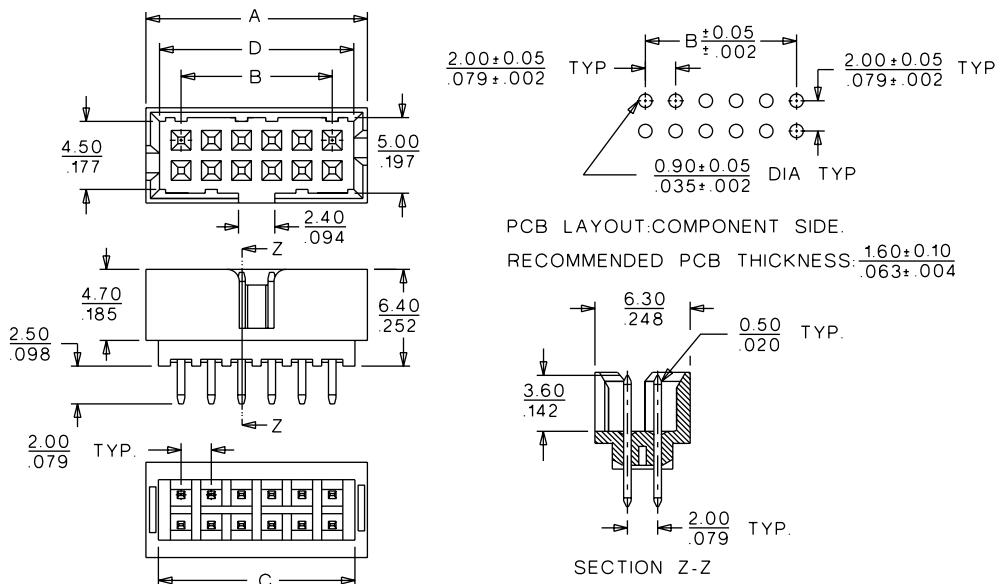
Housing: Black 4/6 nylon, UL 94V-0  
 Contact: Phosphor Bronze  
 Plating: See Table  
 Operating Temperature: -55 to +105°C

**molex® 2.00mm (.079") Pitch  
 Milli-Grid™  
 Header**

**87331  
 Shrouded  
 Vertical, SMC**



**CATALOG DRAWING (FOR REFERENCE ONLY)**



**ORDERING INFORMATION AND DIMENSIONS**

Circuits	Order No.		Dimension			
	15µ" Select Gold	30µ" Select Gold	A	B	C	D
4	87331-0420	87331-0421	6.65 (.262)	2.00 (.079)	5.00 (.197)	4.85 (.191)
6	87331-0620	87331-0621	8.65 (.341)	4.00 (.157)	7.00 (.276)	6.85 (.270)
8	87331-0820	87331-0821	10.65 (.419)	6.00 (.236)	9.00 (.354)	8.85 (.348)
10	87331-1020	87331-1021	12.65 (.498)	8.00 (.315)	11.00 (.433)	10.85 (.427)
12	87331-1220	87331-1221	14.65 (.577)	10.00 (.394)	13.00 (.512)	12.85 (.506)
14	87331-1420	87331-1421	16.65 (.656)	12.00 (.472)	15.00 (.591)	14.85 (.585)
16	87331-1620	87331-1621	18.65 (.734)	14.00 (.551)	17.00 (.669)	16.85 (.663)
18	87331-1820	87331-0621	20.65 (.813)	16.00 (.630)	19.00 (.748)	18.85 (.742)
20	87331-2020	87331-2021	22.65 (.892)	18.00 (.709)	21.00 (.827)	20.85 (.821)
22	87331-2220	87331-2221	24.65 (.970)	20.00 (.787)	23.00 (.906)	22.85 (.900)
24	87331-2420	87331-2421	26.65 (1.049)	22.00 (.866)	25.00 (.984)	24.85 (.978)
26	87331-2620	87331-2621	28.65 (1.128)	24.00 (.945)	27.00 (1.063)	26.85 (1.057)
28	87331-2820	87331-2821	30.65 (1.207)	26.00 (1.024)	29.00 (1.142)	28.85 (1.136)
30	87331-3020	87331-3021	32.65 (1.285)	28.00 (1.102)	31.00 (1.220)	30.85 (1.215)
32	87331-3220	87331-3221	34.65 (1.364)	30.00 (1.181)	33.00 (1.299)	32.85 (1.293)
34	87331-3420	87331-3421	36.65 (1.443)	32.00 (1.260)	35.00 (1.378)	34.85 (1.372)
36	87331-3620	87331-3621	38.65 (1.522)	34.00 (1.339)	37.00 (1.457)	36.85 (1.451)
38	87331-3820	87331-3821	40.65 (1.600)	36.00 (1.417)	39.00 (1.535)	38.85 (1.530)
40	87331-4020	87331-4021	42.65 (1.679)	38.00 (1.496)	41.00 (1.614)	40.85 (1.608)
42	87331-4220	87331-4221	44.65 (1.758)	40.00 (1.575)	43.00 (1.693)	42.85 (1.687)
44	87331-4420	87331-4421	46.65 (1.837)	42.00 (1.654)	45.00 (1.771)	44.85 (1.766)
46	87331-4620	87331-4621	48.65 (1.915)	44.00 (1.732)	47.00 (1.850)	46.85 (1.844)
48	87331-4820	87331-4821	50.65 (1.994)	46.00 (1.811)	49.00 (1.929)	48.85 (1.923)
50	87331-5020	87331-5021	52.65 (2.073)	48.00 (1.890)	51.00 (2.008)	50.85 (2.002)