

PLEASE CHECK WWW.MOLEX.COM FOR LATEST PART INFORMATION

Part Number: [0439151121](#)
Status: **Active**
Description: 10.00mm (.394") Pitch Mini-Fit Sr.™ Header, Dual Row, Vertical, Surface Mount Compatible, with Solderable Retention Clip, 10 Circuits, 2.36mm (.093") PCB Thickness, Tin (Sn) Plating

Documents:

[3D Model](#) [Product Specification PS-42815-001 \(PDF\)](#)
[Drawing \(PDF\)](#) [RoHS Certificate of Compliance \(PDF\)](#)

Agency Certification

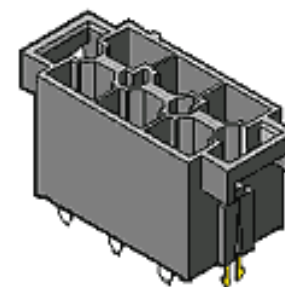
CSA	LR19980
TUV	R9950481
UL	E29179

General

Product Family	PCB Headers
Series	43915
Application	Wire-to-Board
Comments	High Temperature Solder Type
Product Name	Mini-Fit Sr.™

Physical

Breakaway	No
Circuits (Loaded)	10
Circuits (maximum)	10
Color - Resin	Black
First Mate / Last Break	No
Flammability	94V-0
Glow-Wire Compliant	No
Guide to Mating Part	No
Keying to Mating Part	None
Lock to Mating Part	Yes
Material - Metal	Brass
Material - Plating Mating	Tin
Material - Plating Termination	Tin
Material - Resin	High Temperature Thermoplastic
Number of Rows	2
Orientation	Vertical
PCB Locator	Yes
PCB Retention	Yes
PCB Thickness Recommended (in)	0.093 In
PCB Thickness Recommended (mm)	2.40 mm
Packaging Type	Tray
Pitch - Mating Interface (in)	0.394 In
Pitch - Mating Interface (mm)	10.00 mm
Plating min: Mating (µin)	100
Plating min: Mating (µm)	2.50
Plating min: Termination (µin)	100
Plating min: Termination (µm)	2.50
Polarized to PCB	Yes
Shrouded	Fully
Stackable	No
Surface Mount Compatible (SMC)	Yes
Temperature Range - Operating	-40°C to +105°C
Termination Interface: Style	Through Hole



Series

image - Reference only

EU RoHS

ELV and RoHS Compliant

REACH SVHC

Contains SVHC: No

Halogen-Free

Status

Not Reviewed

China RoHS



Need more information on product environmental compliance?

Email productcompliance@molex.com
 For a multiple part number RoHS Certificate of Compliance, [click here](#)

Please visit the [Contact Us](#) section for any non-product compliance questions.

Search Parts in this Series

[43915Series](#)

Mates With

[43914 Mini-Fit Sr.™ Receptacle Housing](#)

Electrical

Current - Maximum per Contact 50A
Voltage - Maximum 600V

Solder Process Data

Duration at Max. Process Temperature (seconds) 8
Lead-free Process Capability SMC & Wave Capable (TH only)
Max. Cycles at Max. Process Temperature 3
Process Temperature max. C 265

Material Info**Reference - Drawing Numbers**

Product Specification PS-42815-001, RPS-42815-001, RPS-42815-011,
RPS-42815-012, RPS-42815-013, RPS-42815-014,
RPS-42815-015
Sales Drawing SD-43915-002

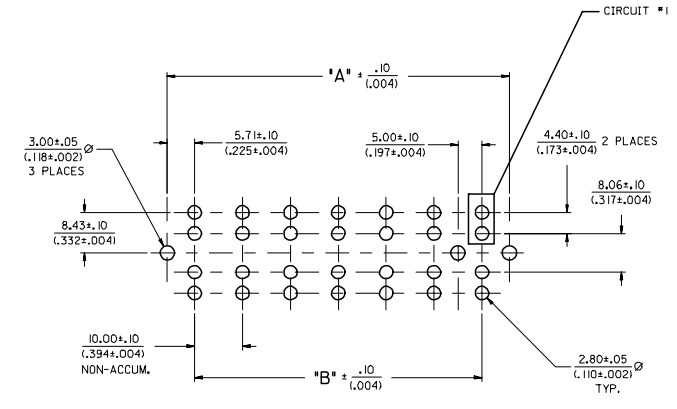
This document was generated on 04/21/2010

PLEASE CHECK WWW.MOLEX.COM FOR LATEST PART INFORMATION

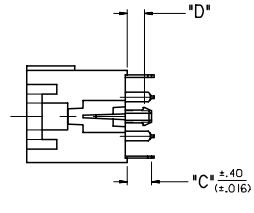
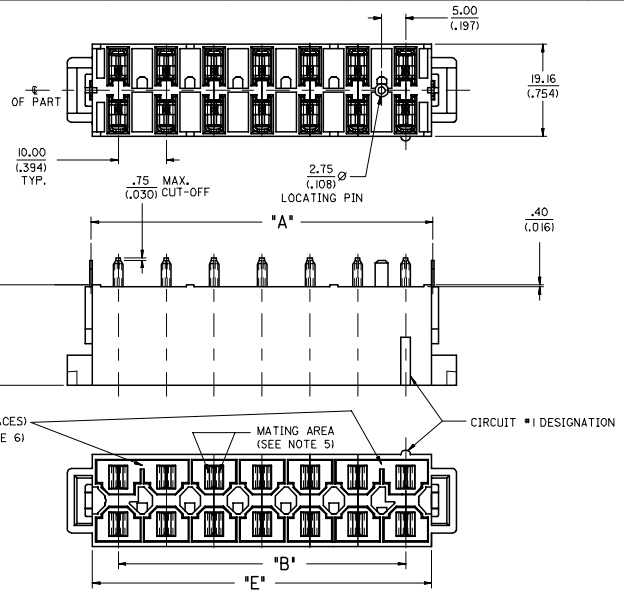
MATERIAL NUMBER	CIRCUITS	DIM. "A"	DIM. "B"	DIM. "C"	DIM. "D"	DIM. "E"	PCB THICKNESS	QUANTITY OF POLARIZING SLOTS	TERMINAL PLATING
43915-1101	6	31.41/(1.237)	20.00/(.787)	3.50/(.137)	L80/(.071)	30.90/(1.217)		1	OVERALL TIN
43915-1102	8	41.41/(1.630)	30.00/(1.181)	3.50/(.137)	L80/(.071)	40.90/(1.610)	1.57/(.062)	2	
43915-1103	10	51.41/(2.024)	40.00/(1.575)	3.50/(.137)	L80/(.071)	50.90/(2.004)		2	
43915-1104	12	61.41/(2.418)	50.00/(1.969)	3.50/(.137)	L80/(.071)	60.90/(2.398)		2	
43915-1105	14	71.41/(2.811)	60.00/(2.362)	3.50/(.137)	L80/(.071)	70.90/(2.791)		2	
43915-1106	6	31.41/(1.237)	20.00/(.787)	5.10/(.201)	2.60/(.102)	30.90/(1.217)		1	
43915-1107	8	41.41/(1.630)	30.00/(1.181)	5.10/(.201)	2.60/(.102)	40.90/(1.610)	2.36/(.093)	2	
43915-1108	10	51.41/(2.024)	40.00/(1.575)	5.10/(.201)	2.60/(.102)	50.90/(2.004)		2	
43915-1109	12	61.41/(2.418)	50.00/(1.969)	5.10/(.201)	2.60/(.102)	60.90/(2.398)		2	
43915-1110	14	71.41/(2.811)	60.00/(2.362)	5.10/(.201)	2.60/(.102)	70.90/(2.791)		2	
43915-1111	6	31.41/(1.237)	20.00/(.787)	5.10/(.201)	3.40/(.134)	30.90/(1.217)		1	
43915-1112	8	41.41/(1.630)	30.00/(1.181)	5.10/(.201)	3.40/(.134)	40.90/(1.610)		2	
43915-1114	10	51.41/(2.024)	40.00/(1.575)	5.10/(.201)	3.40/(.134)	50.90/(2.004)	3.18/(.125)	2	
43915-1115	12	61.41/(2.418)	50.00/(1.969)	5.10/(.201)	3.40/(.134)	60.90/(2.398)		2	
43915-1116	14	71.41/(2.811)	60.00/(2.362)	5.10/(.201)	3.40/(.134)	70.90/(2.791)		2	
43915-1117	6	31.41/(1.237)	20.00/(.787)	8.30/(.327)	6.58/(.259)	30.90/(1.217)		1	
43915-1118	8	41.41/(1.630)	30.00/(1.181)	8.30/(.327)	6.58/(.259)	40.90/(1.610)		2	
43915-1119	10	51.41/(2.024)	40.00/(1.575)	8.30/(.327)	6.58/(.259)	50.90/(2.004)	6.35/(.250)	2	
43915-1120	12	61.41/(2.418)	50.00/(1.969)	8.30/(.327)	6.58/(.259)	60.90/(2.398)		2	
43915-1121	14	71.41/(2.811)	60.00/(2.362)	8.30/(.327)	6.58/(.259)	70.90/(2.791)		2	
43915-1201	6	31.41/(1.237)	20.00/(.787)	3.50/(.137)	L80/(.071)	30.90/(1.217)		1	
43915-1202	8	41.41/(1.630)	30.00/(1.181)	3.50/(.137)	L80/(.071)	40.90/(1.610)		2	
43915-1203	10	51.41/(2.024)	40.00/(1.575)	3.50/(.137)	L80/(.071)	50.90/(2.004)	1.57/(.062)	2	
43915-1204	12	61.41/(2.418)	50.00/(1.969)	3.50/(.137)	L80/(.071)	60.90/(2.398)		2	
43915-1205	14	71.41/(2.811)	60.00/(2.362)	3.50/(.137)	L80/(.071)	70.90/(2.791)		2	
43915-1206	6	31.41/(1.237)	20.00/(.787)	5.10/(.201)	2.60/(.102)	30.90/(1.217)		1	
43915-1207	8	41.41/(1.630)	30.00/(1.181)	5.10/(.201)	2.60/(.102)	40.90/(1.610)	2.36/(.093)	2	
43915-1208	10	51.41/(2.024)	40.00/(1.575)	5.10/(.201)	2.60/(.102)	50.90/(2.004)		2	
43915-1209	12	61.41/(2.418)	50.00/(1.969)	5.10/(.201)	2.60/(.102)	60.90/(2.398)		2	
43915-1210	14	71.41/(2.811)	60.00/(2.362)	5.10/(.201)	2.60/(.102)	70.90/(2.791)		2	
43915-1211	6	31.41/(1.237)	20.00/(.787)	5.10/(.201)	3.40/(.134)	30.90/(1.217)		1	
43915-1212	8	41.41/(1.630)	30.00/(1.181)	5.10/(.201)	3.40/(.134)	40.90/(1.610)		2	
43915-1213	10	51.41/(2.024)	40.00/(1.575)	5.10/(.201)	3.40/(.134)	50.90/(2.004)	3.18/(.125)	2	
43915-1214	12	61.41/(2.418)	50.00/(1.969)	5.10/(.201)	3.40/(.134)	60.90/(2.398)		2	
43915-1215	14	71.41/(2.811)	60.00/(2.362)	5.10/(.201)	3.40/(.134)	70.90/(2.791)		2	
43915-1216	6	31.41/(1.237)	20.00/(.787)	8.30/(.327)	6.58/(.259)	30.90/(1.217)		1	
43915-1217	8	41.41/(1.630)	30.00/(1.181)	8.30/(.327)	6.58/(.259)	40.90/(1.610)		2	
43915-1218	10	51.41/(2.024)	40.00/(1.575)	8.30/(.327)	6.58/(.259)	50.90/(2.004)	6.35/(.250)	2	
43915-1219	12	61.41/(2.418)	50.00/(1.969)	8.30/(.327)	6.58/(.259)	60.90/(2.398)		2	
43915-1220	14	71.41/(2.811)	60.00/(2.362)	8.30/(.327)	6.58/(.259)	70.90/(2.791)		2	
43915-1221	10	51.41/(2.024)	40.00/(1.575)	3.50/(.137)	2.60/(.102)	50.90/(2.004)	2.36/(.093)	2	

NOTES:

- MATERIALS:
HOUSING: 30% GLASS FILLED NYLON 4/6, U.L. 94V-0, COLOR: BLACK.
TERMINAL: ALLOY 151
PLATING: *TIN OVER NICKEL.
OR SELECT GOLD AND TIN OVER NICKEL.
(SEE CHART)
- PRODUCT SPEC.: PSX-42815-0001
- PARTS ARE NOT TO BE MATED OR UNMATED WHILE CIRCUITS ARE LIVE.
- PART MATES WITH MOLEX RECEPTACLE 43914.
- WHEN USING OVERALL TIN PLATED TERMINALS:
FOR APPLICATIONS INVOLVING VIBRATION AND/OR THERMAL CYCLING, MOLEX STRONGLY RECOMMENDS THE USE OF NYE LUBRICANT (NYGEL 7600) ON THE MATING SURFACES OF THE TERMINAL.
- POLARIZING SLOTS TO BE LOCATED BETWEEN CIRCUITS ON EITHER END OF HOUSING OF THE CIRCUIT 1 ROW, AS SHOWN.
EXCEPTION: THE 6 CIRCUIT HOUSING WILL HAVE A SINGLE SLOT ON THE CIRCUIT 1 END ONLY.



RECOMMENDED P.C. BOARD PLATED-THRU HOLE LAYOUT
(14 CIRCUIT LAYOUT SHOWN)



ADDED -1905 EC NO: UCP2006-1689 DRAWN: JOMERL 2006/0124 CHECKED: JOMERL 2006/0124 APPR: JOMERL 2006/0124 REV 1	QUALITY SYMBOLS ▽=0 ▽=0	GENERAL TOLERANCES (UNLESS SPECIFIED) DIM INCH 4 PLACES ± .008 3 PLACES ± .008 2 PLACES ± 0.2 1 PLACE ± .008 ANGULAR ± °	DIMENSION STYLE MM/IN	SCALE 2:1	DESIGN UNITS METRIC	THIRD ANGLE PROJECTION	
	DRAWN BY JOMERL	DATE 8/21/97	CHECKED BY JOMERL	DATE 8/25/97	APPROVED BY FRY	DATE 8/26/97	TITLE VERTICAL HEADER DUAL ROW, 6-14 CIRCUIT MINI-FIT SR.
	MATERIAL NO. SEE CHART	DOCUMENT NO. SD-43915-002	DRAFT WHERE APPLICABLE MUST REMAIN WITHIN DIMENSIONS	MOLEX INCORPORATED	SHEET NO. 1 OF 1	THIS DRAWING CONTAINS INFORMATION THAT IS PROPRIETARY TO MOLEX INCORPORATED AND SHOULD NOT BE USED WITHOUT WRITTEN PERMISSION	
	SIZE D						