

# Bulkhead Jack Crimp Attachment for Flexible Cable

36 50 390

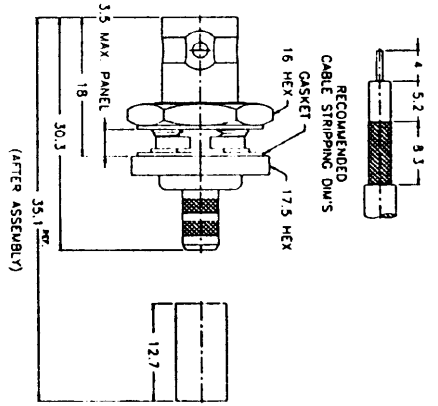
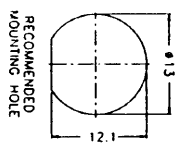
## Bulkhead Crimp Jack - Standard Cable

P.N.	Cable Group	Plt.	Ins.	Imp.	Crimp Tool
<b>Teflon/Captured</b>					
86421A1-NT3G-1-50	01	Nickel	Teflon	50	4
86421A1-ND3G-1A-50	01A	Nickel	Delrin	50	4
86421A1-NT3G-1B-50	01B	Nickel	Teflon	50	3 or 4
86421A1-NT3G-3-50	03	Nickel	Teflon	50	4
86421A1-NT3G-3-75	03	Nickel	Teflon	75	4
86421A1-NT3G-3A-50	03A	Nickel	Teflon	50	4
86421A1-NT3G-7B-50	07B	Nickel	Teflon	50	4
86421A6-NT3G-7C-50	07C	Nickel	Teflon	50	1 + 6
86421A1-NT3G-15-75	15	Nickel	Teflon	75	3
86421A1-003-NT3G-75	16	Nickel	Teflon	75	.180 hex
<b>Delrin/Non Captured</b>					
86421B1-ND3G-1-50	01	Nickel	Delrin	50	3 or 4
86421B1-ND3G-3-50	03	Nickel	Delrin	50	4
86421B1-ND3G-3-75	03	Nickel	Delrin	75	4

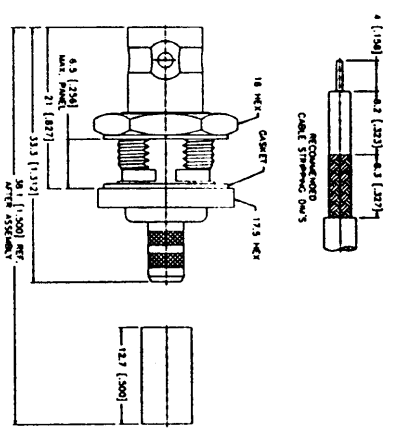
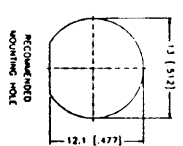
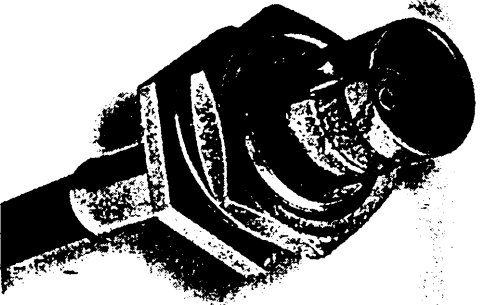
Remark: 3.5 [.138] Max. panel thickness

P.N.	Cable Group	Plt.	Ins.	Imp.	Crimp Tool
86421A2-NT3G-1-50	01	Nickel	Teflon	50	4
86421A2-NT3G-3-75	03	Nickel	Teflon	75	4

Remark: 6.5 [.256] Max. panel thickness



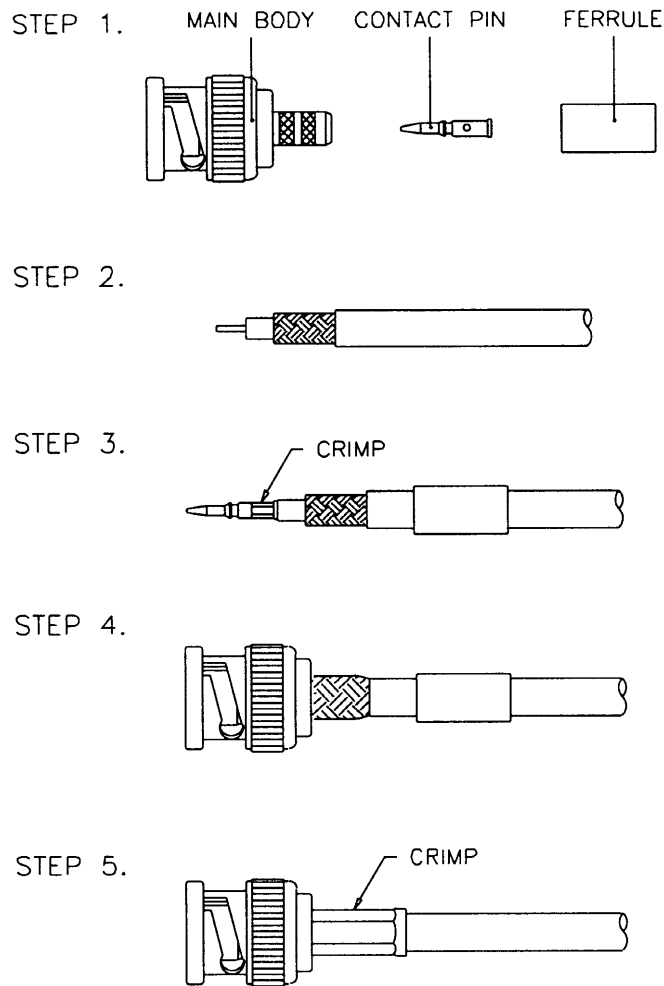
Assembly Instruction J - page 218



Assembly Instruction J - page 218

## Cable Assembly Instruction J

## Crimp-crimp



- STEP 1. All parts of the connector are shown.  
A crimp tool is necessary to complete the connection.
- STEP 2. Strip the cable inner conductor, dielectric, braid, and jacket as per "RECOMMENDED CABLE STRIPPING DIM'S" in catalog.
- STEP 3. Insert inner conductor into the CONTACT PIN and solder on the cable. Then slide the FERRULE onto cable.
- STEP 4. Insert the MAIN BODY into braid and dielectric.
- STEP 5. Slide the FERRULE over braid, crimp it with the crimp tool as shown.