



HEAT SLUG

Part No.: S30GY9C

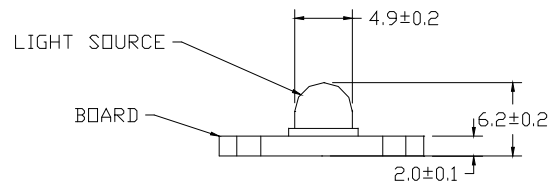
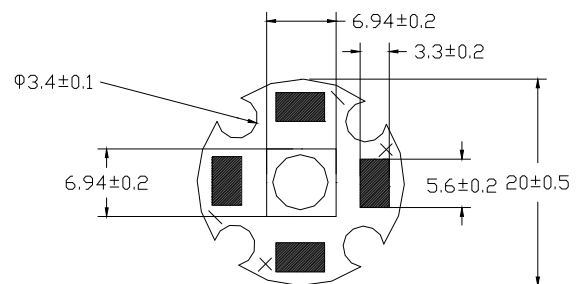


Features:

- Highest Flux Yellow
- High reliability and Very long operating life (up to 100K hours)
- Low voltage DC operated
- More Energy Efficient than Incandescent and most Halogen lamps
- NO UV
- Superior ESD protection

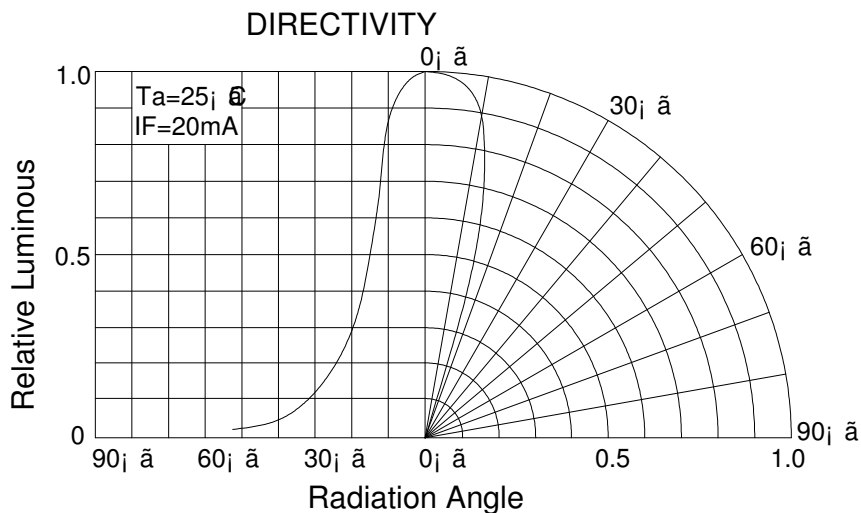
Typical Applications:

- Reading lights(car,bus,aircraft)
- Portable(flashlight,bicycle)
- Automotive Exterior(Stop-Tail-Turn, CHMSL,Mirror Side Repeat)
- Decorative



NOTE:

- All dimensions are millimetres.
- Tolerance is ± 0.1 mm unless otherwise noted





HEAT SLUG

Part No.: S30GY9C

Absolute maximum ratings (Ta = 25°C)

Parameter	Symbol	Test Condition	Value		Unit
			Min.	Max.	
DC Forward Current	IF	----	----	350	mA
DC Forward Maximum Current	I _{max}	-----	----	500	mA
Power Dissipation	Pd	----	----	0.98	W
LED Junction Temperature	Tj	----		120	°C
Operating Temperature	Topr	----	-25	+100	°C
Storage Temperature	Tstr	----	-40	+120	°C
Soldering Temperature	---	-----	260°C for 5 Seconds max		

Electrical and optical characteristics (Ta = 25°C)

Parameter	Symbol	Test Condition	Value			Unit
			Min.	Typ.	Max.	
Forward Voltage	V _F	IF = 350mA	----	2.0	2.5	V
Luminous Flux	Φ _v	IF = 350mA	5	11	-	lm
Viewing Angle	2θ 1/2	IF = 350mA	----	30	----	Deg.
Dominant Wavelength	λ _d	IF = 350mA	590	----	595	nm

Luminous Flux Bins (Ta = 25°C)

Unit:lm

Bin	B	C	D	E	F	G
Min	5	10	15	20	25	30
Max	10	15	20	25	30	40

Dominant Wavelength- λ_d (Ta = 25°C)

Unit: nm

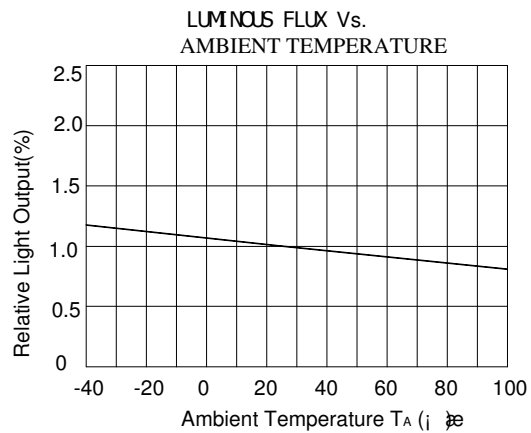
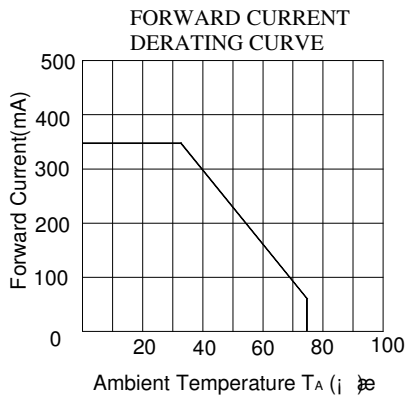
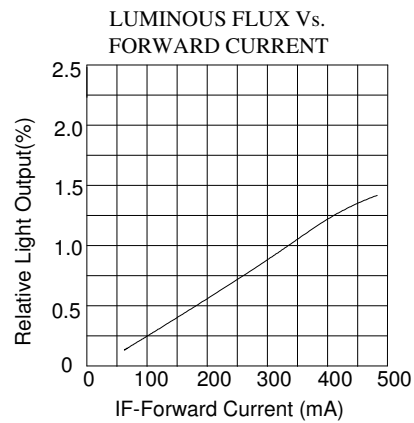
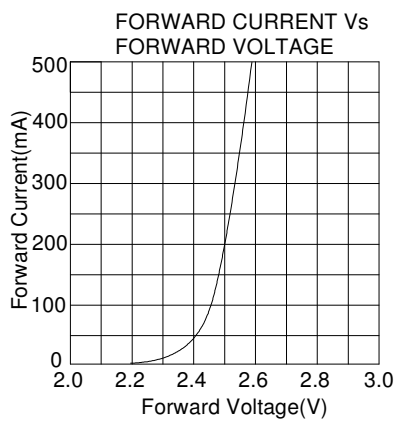
Bin	Q	R	S	T		
Min	580	585	590	595		
Max	585	590	595	600		



HEAT SLUG

Part No.: S30GY9C

Typical electrical/optical characteristic curves:



592/35

