

This document was generated on 06/07/2010

PLEASE CHECK WWW.MOLEX.COM FOR LATEST PART INFORMATION

Part Number: [0432236004](#)
Status: **Active**
Overview: [modular_plugs_jacks](#)
Description: Modular Jack, Right Angle, Low Profile, 6/6, 3 Ports, Panel Stops

Documents:

[3D Model](#) [Product Specification PS-43223-001 \(PDF\)](#)
[Drawing \(PDF\)](#) [RoHS Certificate of Compliance \(PDF\)](#)

Agency Certification

CSA LR19980
 UL E107635

General

Product Family Modular Jacks/Plugs
 Series [43223](#)
 Component Type PCB Jack
 Magnetic No
 Overview [modular_plugs_jacks](#)
 Performance Category 3
 Power over Ethernet (PoE) N/A
 Product Name RJ11

Physical

Boot Color N/A
 Color - Resin Black
 Durability (mating cycles max) 500
 Flammability 94V-0
 Inverted / Top Latch No
 Keying to Mating Part None
 Lightpipes/LEDs None
 Material - Metal Phosphor Bronze
 Material - Plating Mating Gold
 Material - Plating Termination Tin
 Material - Resin High Temperature Thermoplastic
 Orientation Right Angle (Side Entry)
 PCB Locator Yes
 PCB Retention Yes
 PCB Thickness Recommended (in) 0.062 In
 PCB Thickness Recommended (mm) 1.57 mm
 Packaging Type Tray
 Panel Mount With Flange
 Pitch - Mating Interface (in) 0.040 In
 Pitch - Mating Interface (mm) 1.02 mm
 Pitch - Term. Interface (in) 0.050 In
 Pitch - Term. Interface (mm) 1.27 mm
 Plating min: Mating (µin) 50
 Plating min: Mating (µm) 1.25
 Plating min: Termination (µin) 100
 Plating min: Termination (µm) 2.5
 Ports 3
 Positions / Loaded Contacts 6/6
 Surface Mount Compatible (SMC) No
 Temperature Range - Operating -40°C to +85°C
 Termination Interface: Style Through Hole
 Waterproof / Dustproof No

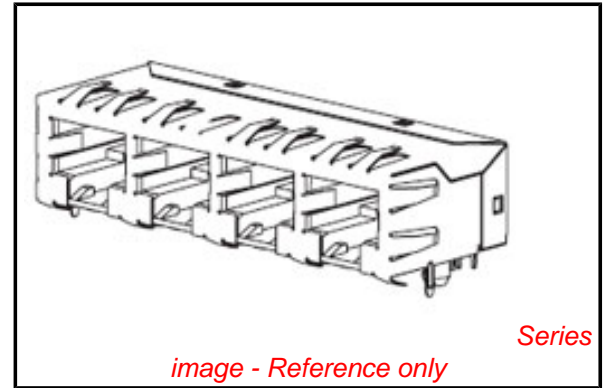


image - Reference only

EU RoHS

**ELV and RoHS
 Compliant**
REACH SVHC
 Not Reviewed
**Halogen-Free
 Status**
Not Reviewed

China RoHS



**Need more information on product
 environmental compliance?**

Email productcompliance@molex.com
 For a multiple part number RoHS Certificate of
 Compliance, [click here](#)

Please visit the [Contact Us](#) section for any
 non-product compliance questions.

Search Parts in this Series

[43223Series](#)

Mates With

FCC 68 Plugs

Wire/Cable Type

N/A

WWW.MOLEX.COM

Electrical

Current - Maximum per Contact

1.5A

Grounding to PCB

Yes

Grounding to Panel

None

Shielded

No

Voltage - Maximum

150V AC (RMS)

Solder Process Data

Lead-free Process Capability

Wave Capable (TH only)

Material Info

Old Part Number

A432236004

Reference - Drawing Numbers

Packaging Specification

PK-43249-004

Product Specification

PS-43223-001

Sales Drawing

SDA-43223

Test Summary

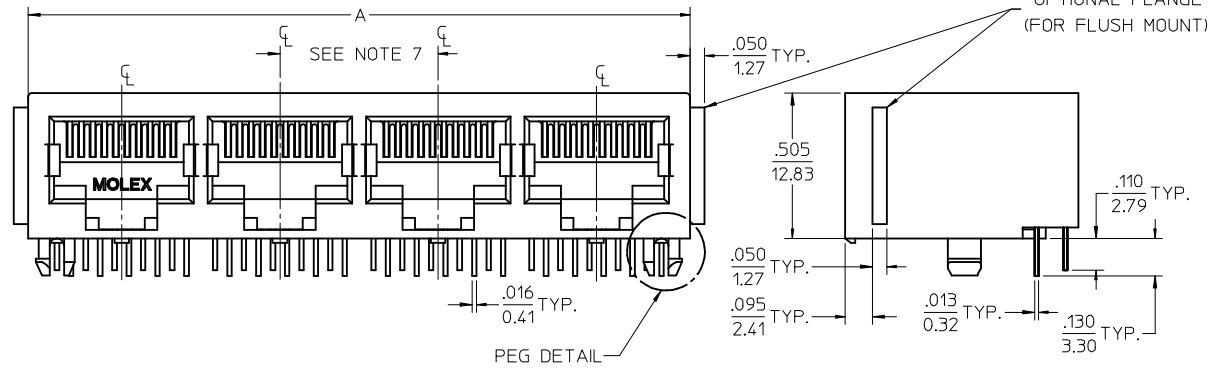
TS-43223-001

This document was generated on 06/07/2010

PLEASE CHECK WWW.MOLEX.COM FOR LATEST PART INFORMATION

NOTES:

- MATERIAL:
HOUSING: GLASS FILLED NYLON, UL94V-0, COLOR: BLACK
INSULATOR: GLASS FILLED NYLON, UL94V-0, COLOR: BLACK
TERMINALS: PHOSPHOR BRONZE, .012/ 0.30 THICK
- FINISH:
TERMINALS:
SELECT GOLD IN CONTACT AREA: 50 MICRONS/ 1.27 MICROMETERS MIN.,
*SELECT TIN IN PC TAIL AREA: 100 MICRONS/ 2.54 MICROMETERS MIN.,
WITH OVERALL NICKEL UNDERPLATE: 50 MICRONS/ 1.27 MICROMETERS MIN.
*THE PRIMARY SHIPPING CARTON WILL BE LABELED "COMPLIANT TO RoHS DIRECTIVE 2002/95/EC AND ELV ANNEX II OF DIRECTIVE 2000/53/EC".
CARTONS WITHOUT THIS LABEL MAY CONTAIN PRODUCT WITH TIN-LEAD IN THE PC TAIL AREA.
- PRODUCT SPECIFICATION AND PROCESSING PARAMETERS: PS-43223-001.
- PACKAGING SPECIFICATION:
UNSHIELDED CONNECTOR ASSEMBLIES PACKAGED IN TRAYS PER MOLEX PACKAGING SPECIFICATION PK-43249-004.
- SEE SHEETS 4-6 FOR P.C. BOARD LAYOUTS.
- SEE SHEET 2 FOR THE SHIELDED JACK ASSEMBLY.
- FOR 6 CIRCUIT JACKS CENTERLINE TO CENTERLINE SPACING IS .448/ 11.38, FOR 8 CIRCUIT JACKS CENTERLINE TO CENTERLINE SPACING IS .550/ 13.97.
- ALL UNTOLERANCED DIMENSIONS ARE SHOWN FOR REFERENCE ONLY.
- THIS PART CONFORMS TO CLASS B REQUIREMENTS OF COSMETIC SPECIFICATION PS-45499-002.



4 PORT 8 LOADED
10 JACK SHOWN

UNSHIELDED GANGED JACK ASSEMBLY
SEE SHEET 3

CENTER PEG
(8 PORT ASSY. ONLY)



SNAP-FIT
PEG DETAIL
SCALE 8:1



6 CIRCUIT HOUSING

| CIRCUIT SIZE | NO. OF PORTS | DIM. A | DIM. C | DIM. D |
|--------------|--------------|---------------|-------------|---------------|
| 6 | 2 | .985 (25.02) | .250 (6.35) | .848 (21.54) |
| 4 | 2 | .985 (25.02) | .150 (3.81) | .848 (21.54) |
| 2 | 2 | .985 (25.02) | .050 (1.27) | .848 (21.54) |
| 6 | 3 | 1.433 (36.40) | .250 (6.35) | 1.296 (32.92) |
| 4 | 3 | 1.433 (36.40) | .150 (3.81) | 1.296 (32.92) |
| 2 | 3 | 1.433 (36.40) | .050 (1.27) | 1.296 (32.92) |
| 6 | 4 | 1.881 (47.78) | .250 (6.35) | 1.744 (44.30) |
| 4 | 4 | 1.881 (47.78) | .150 (3.81) | 1.744 (44.30) |
| 2 | 4 | 1.881 (47.78) | .050 (1.27) | 1.744 (44.30) |
| 6 | 5 | 2.329 (59.16) | .250 (6.35) | 2.192 (55.68) |
| 4 | 5 | 2.329 (59.16) | .150 (3.81) | 2.192 (55.68) |
| 2 | 5 | 2.329 (59.16) | .050 (1.27) | 2.192 (55.68) |
| 6 | 6 | 2.777 (70.54) | .250 (6.35) | 2.640 (67.06) |
| 4 | 6 | 2.777 (70.54) | .150 (3.81) | 2.640 (67.06) |
| 2 | 6 | 2.777 (70.54) | .050 (1.27) | 2.640 (67.06) |
| 8 | 8 | 3.673 (93.29) | .250 (6.35) | 3.536 (89.81) |
| 6 | 8 | 3.673 (93.29) | .150 (3.81) | 3.536 (89.81) |
| 4 | 8 | 3.673 (93.29) | .050 (1.27) | 3.536 (89.81) |

8 CIRCUIT HOUSING

| CIRCUIT SIZE | NO. OF PORTS | DIM. A | DIM. C | DIM. D |
|--------------|--------------|----------------|--------------|----------------|
| 10 | 2 | 1.200 (30.48) | .450 (11.43) | 1.000 (25.40) |
| 8 | 2 | 1.200 (30.48) | .350 (8.89) | 1.000 (25.40) |
| 6 | 2 | 1.200 (30.48) | .250 (6.35) | 1.000 (25.40) |
| 10 | 3 | 1.750 (44.45) | .450 (11.43) | 1.550 (39.37) |
| 8 | 3 | 1.750 (44.45) | .350 (8.89) | 1.550 (39.37) |
| 6 | 3 | 1.750 (44.45) | .250 (6.35) | 1.550 (39.37) |
| 4 | 3 | 1.750 (44.45) | .150 (3.81) | 1.550 (39.37) |
| 10 | 4 | 2.300 (58.42) | .450 (11.43) | 2.100 (53.34) |
| 8 | 4 | 2.300 (58.42) | .350 (8.89) | 2.100 (53.34) |
| 4 | 4 | 2.300 (58.42) | .150 (3.81) | 2.100 (53.34) |
| 4 | 5 | 2.850 (72.39) | .450 (11.43) | 2.650 (67.31) |
| 10 | 5 | 2.850 (72.39) | .350 (8.89) | 2.650 (67.31) |
| 8 | 5 | 2.850 (72.39) | .250 (6.35) | 2.650 (67.31) |
| 10 | 6 | 3.400 (86.36) | .450 (11.43) | 3.200 (81.28) |
| 8 | 6 | 3.400 (86.36) | .350 (8.89) | 3.200 (81.28) |
| 6 | 6 | 3.400 (86.36) | .250 (6.35) | 3.200 (81.28) |
| 10 | 8 | 4.500 (114.30) | .450 (11.43) | 4.300 (109.22) |
| 8 | 8 | 4.500 (114.30) | .350 (8.89) | 4.300 (109.22) |

ADD BLOCK TOL
EC NO: UCP2009-0477
DRWN: BELL 2008/09/05
CHKD: BELL 2008/09/11
APPR: FSMITH 2008/09/11

DESCRIPTION
K1

QUALITY SYMBOLS
▽=0
▽=0

GENERAL TOLERANCES (UNLESS SPECIFIED)

| | mm | INCH |
|----------|--------|---------|
| 4 PLACES | ± .010 | ± .0004 |
| 3 PLACES | ± .015 | ± .0006 |
| 2 PLACES | ± 0.38 | ± .015 |
| 1 PLACE | ± .005 | ± .0002 |

ANGULAR ±1/2°

DRAFT WHERE APPLICABLE
MUST REMAIN WITHIN DIMENSIONS

DIMENSION STYLE
IN/MM

SCALE
3:1

DESIGN UNITS
INCH

THIRD ANGLE PROJECTION

DRAWN BY
JTR

DATE
1993/10/18

CHECKED BY
JTR

DATE
1993/10/18

APPROVED BY
RAS

DATE
1993/10/18

MATERIAL NO.
SEE SHTS 3

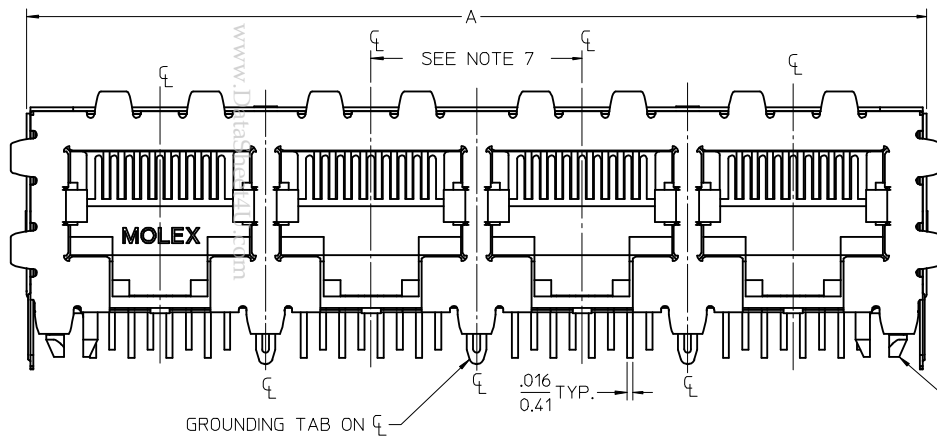
DOCUMENT NO.
SDA-43223

LOW PROFILE GANGED,
RIGHT ANGLE MODULAR JACK
ASSEMBLY

MOLEX INCORPORATED

SHEET NO.
1 OF 6

THIS DRAWING CONTAINS INFORMATION THAT IS PROPRIETARY TO MOLEX INCORPORATED AND SHOULD NOT BE USED WITHOUT WRITTEN PERMISSION



SUGGESTED PANEL OPENING

SCALE : 2/1



4 PORT 8 LOADED
8 JACK SHOWN

- NOTES:
- 1) MATERIAL:
HOUSING: GLASS FILLED NYLON, UL94V-0, COLOR: BLACK
INSULATOR: GLASS FILLED NYLON, UL94V-0, COLOR: BLACK
TERMINALS: PHOSPHOR BRONZE: .012/ 0.30 THICK
SHIELD: BRASS, FRONT .007/ 0.18 THICK, REAR .010/ 0.25 THICK
 - 2) FINISH:
TERMINALS:
SELECT GOLD IN CONTACT AREA: 50 MICROINCHES/ 1.27 MICROMETERS MIN.,
*SELECT TIN IN PC TAIL AREA: 100 MICROINCHES/ 2.54 MICROMETERS MIN.,
WITH OVERALL NICKEL UNDERPLATE: 50 MICROINCHES/ 1.27 MICROMETERS MIN.
SHIELD:
*100 MICROINCHES/ 2.54 MICROMETERS NICKEL OVER 50 MICROINCHES/ 1.27 MICROMETERS COPPER UNDERPLATE. PCB GROUND TABS DIPPED IN TIN
*THE PRIMARY SHIPPING CARTON WILL BE LABELED "COMPLIANT TO RoHS DIRECTIVE 2002/95/EC AND ELV ANNEX II OF DIRECTIVE 2000/53/EC". CARTONS WITHOUT THIS LABEL MAY CONTAIN PRODUCT WITH TIN-LEAD IN THE PC TAIL AND/OR SHIELD.
 - 3) PRODUCT SPECIFICATION AND PROCESSING PARAMETERS: PS-43223-001.
 - 4) PACKAGING SPECIFICATION:
SHIELDED CONNECTOR ASSEMBLIES PACKAGED IN TRAYS PER MOLEX PACKAGING SPECIFICATION PK-44150-004.
 - 5) SEE SHEETS 4-6 FOR P.C. BOARD LAYOUTS.
 - 6) REAR SHIELD IS AVAILABLE WITH (1) CENTERED GROUND TAB ON 4 & 8 PORT VERSIONS.
 - 7) CIRCUIT JACKS CENTERLINE TO CENTERLINE SPACING IS .550/ 13.97.
 - 8) ALL UNTOLERANCED DIMENSIONS ARE SHOWN FOR REFERENCE ONLY.
 - 9) THIS PART CONFORMS TO CLASS B REQUIREMENTS OF COSMETIC SPECIFICATION PS-45499-002.

| HOUSING SIZE | CIRCUIT SIZE | NO. OF PORTS | DIM. A | DIM. C | DIM. D | DIM. E |
|--------------|--------------|--------------|----------------|-------------|----------------|----------------|
| 8 | 8 | 2 | 1.224 (31.09) | .350 (8.89) | 1.000 (25.40) | 1.255 (31.88) |
| 8 | 8 | 4 | 2.324 (59.03) | .350 (8.89) | 2.100 (53.34) | 2.355 (59.82) |
| 8 | 8 | 6 | 3.424 (86.97) | .350 (8.89) | 3.200 (81.28) | 3.455 (87.76) |
| 8 | 8 | 8 | 4.524 (114.91) | .350 (8.89) | 4.300 (109.22) | 4.555 (115.97) |
| 8 | 2 | 8 | 4.524 (114.91) | .050 (1.27) | 4.300 (109.22) | 4.555 (115.97) |

SEE SHEET 1
EC NO: UCP2009-0477
DRWN:JBELL
CHKD:JBELL
APPR:FSMITH

2008/09/05
2008/09/11
2008/09/11

DESCRIPTION

QUALITY SYMBOLS
▽=0
▽=0

REV
K1

GENERAL TOLERANCES (UNLESS SPECIFIED)

| | mm | INCH |
|----------|--------|---------|
| 4 PLACES | ± .010 | ± .0004 |
| 3 PLACES | ± .015 | ± .0006 |
| 2 PLACES | ± 0.38 | ± .015 |
| 1 PLACE | ± .010 | ± .0004 |

ANGULAR ±1/2°

DRAFT WHERE APPLICABLE MUST REMAIN WITHIN DIMENSIONS

DIMENSION STYLE IN/MM

SCALE 4:1

DESIGN UNITS INCH

THIRD ANGLE PROJECTION

DRAWN BY JTR DATE 1993/10/18

CHECKED BY DATE

JTR 1993/10/18

APPROVED BY RAS DATE 1993/10/18

MATERIAL NO. SEE SHTS 3

SIZE C

LOW PROFILE GANGED, RIGHT ANGLE MODULAR JACK ASSEMBLY

MOLEX MOLEX INCORPORATED

DOCUMENT NO. SDA-43223

SHEET NO. 2 OF 6

THIS DRAWING CONTAINS INFORMATION THAT IS PROPRIETARY TO MOLEX INCORPORATED AND SHOULD NOT BE USED WITHOUT WRITTEN PERMISSION

FLUSH MOUNT (UNSHIELDED)

| ASSEMBLY NUMBER | CONNECTOR SIZE | NUMBER OF CIRCUITS | NUMBER OF PORTS | PACKAGING STYLE | PACKAGING SPECIFICATION |
|-----------------|----------------|--------------------|-----------------|-----------------|-------------------------|
| 43223-6001 | 6 | 6 | 2 | TRAY | PK-43249-004 |
| 43223-6004 | 6 | 6 | 3 | ↑ | ↑ |
| 43223-6007 | 6 | 6 | 4 | ↑ | ↑ |
| 43223-6010 | 6 | 6 | 5 | ↑ | ↑ |
| 43223-6013 | 6 | 6 | 6 | ↑ | ↑ |
| 43223-6019 | 6 | 6 | 8 | ↑ | ↑ |
| 43223-6022 | 6 | 4 | 2 | ↑ | ↑ |
| 43223-6025 | 6 | 4 | 3 | ↑ | ↑ |
| 43223-6028 | 6 | 4 | 4 | ↑ | ↑ |
| 43223-6031 | 6 | 4 | 5 | ↑ | ↑ |
| 43223-6034 | 6 | 4 | 6 | ↑ | ↑ |
| 43223-6040 | 6 | 4 | 8 | ↑ | ↑ |
| 43223-6043 | 6 | 2 | 2 | ↑ | ↑ |
| 43223-6046 | 6 | 2 | 3 | ↑ | ↑ |
| 43223-6049 | 6 | 2 | 4 | ↑ | ↑ |
| 43223-6052 | 6 | 2 | 5 | ↑ | ↑ |
| 43223-6055 | 6 | 2 | 6 | ↑ | ↑ |
| 43223-6058 | 6 | 2 | 8 | TRAY | PK-43249-004 |

| | | | | | |
|------------|---|----|---|------|--------------|
| 43223-8001 | 8 | 10 | 2 | TRAY | PK-43249-004 |
| 43223-8004 | 8 | 10 | 3 | ↑ | ↑ |
| 43223-8007 | 8 | 10 | 4 | ↑ | ↑ |
| 43223-8010 | 8 | 10 | 5 | ↑ | ↑ |
| 43223-8013 | 8 | 10 | 6 | ↑ | ↑ |
| 43223-8019 | 8 | 10 | 8 | ↑ | ↑ |
| 43223-8022 | 8 | 8 | 2 | ↑ | ↑ |
| 43223-8025 | 8 | 8 | 3 | ↑ | ↑ |
| 43223-8028 | 8 | 8 | 4 | ↑ | ↑ |
| 43223-8031 | 8 | 8 | 5 | ↑ | ↑ |
| 43223-8034 | 8 | 8 | 6 | ↑ | ↑ |
| 43223-8040 | 8 | 8 | 8 | ↑ | ↑ |
| 43223-8041 | 8 | 4 | 5 | ↓ | ↓ |
| 43223-8042 | 8 | 6 | 3 | TRAY | PK-43249-004 |

FLANGELESS (UNSHIELDED)

| ASSEMBLY NUMBER | CONNECTOR SIZE | NUMBER OF CIRCUITS | NUMBER OF PORTS | PACKAGING STYLE | PACKAGING SPECIFICATION |
|-----------------|----------------|--------------------|-----------------|-----------------|-------------------------|
| 43223-6101 | 6 | 6 | 2 | TRAY | PK-43249-004 |
| 43223-6104 | 6 | 6 | 3 | ↑ | ↑ |
| 43223-6107 | 6 | 6 | 4 | ↑ | ↑ |
| 43223-6110 | 6 | 6 | 5 | ↑ | ↑ |
| 43223-6113 | 6 | 6 | 6 | ↑ | ↑ |
| 43223-6119 | 6 | 6 | 8 | ↑ | ↑ |
| 43223-6122 | 6 | 4 | 2 | ↑ | ↑ |
| 43223-6125 | 6 | 4 | 3 | ↑ | ↑ |
| 43223-6128 | 6 | 4 | 4 | ↑ | ↑ |
| 43223-6131 | 6 | 4 | 5 | ↑ | ↑ |
| 43223-6134 | 6 | 4 | 6 | ↑ | ↑ |
| 43223-6140 | 6 | 4 | 8 | ↑ | ↑ |
| 43223-6143 | 6 | 2 | 2 | ↑ | ↑ |
| 43223-6146 | 6 | 2 | 3 | ↑ | ↑ |
| 43223-6149 | 6 | 2 | 4 | ↑ | ↑ |
| 43223-6152 | 6 | 2 | 5 | ↑ | ↑ |
| 43223-6155 | 6 | 2 | 6 | ↓ | ↓ |
| 43223-6158 | 6 | 2 | 8 | TRAY | PK-43249-004 |

| | | | | | |
|------------|---|----|---|------|--------------|
| 43223-8101 | 8 | 10 | 2 | TRAY | PK-43249-004 |
| 43223-8104 | 8 | 10 | 3 | ↑ | ↑ |
| 43223-8107 | 8 | 10 | 4 | ↑ | ↑ |
| 43223-8110 | 8 | 10 | 5 | ↑ | ↑ |
| 43223-8113 | 8 | 10 | 6 | ↑ | ↑ |
| 43223-8119 | 8 | 10 | 8 | ↑ | ↑ |
| 43223-8122 | 8 | 8 | 2 | ↑ | ↑ |
| 43223-8131 | 8 | 8 | 3 | ↑ | ↑ |
| 43223-8140 | 8 | 8 | 4 | ↑ | ↑ |
| 43223-8149 | 8 | 8 | 5 | ↑ | ↑ |
| 43223-8158 | 8 | 8 | 6 | ↓ | ↓ |
| 43223-8176 | 8 | 8 | 8 | TRAY | PK-43249-004 |

| | | | | | |
|------------|---|---|---|------|--------------|
| 43223-8191 | 8 | 6 | 2 | TUBE | PK-43249-005 |
| 43223-8192 | 8 | 4 | 4 | TUBE | PK-43249-005 |
| 43223-8193 | 8 | 4 | 3 | TUBE | PK-43249-005 |
| 43223-8195 | 8 | 8 | 2 | TUBE | PK-43249-005 |
| 43223-8196 | 8 | 8 | 3 | TUBE | PK-43249-005 |
| 43223-8197 | 8 | 8 | 4 | TUBE | PK-43249-005 |

FLANGELESS (SHIELDED)

| ASSEMBLY NUMBER | DIMENSION "B" | CONNECTOR SIZE | NUMBER OF CIRCUITS | NUMBER OF PORTS | NUMBER OF REAR SHIELD GROUND TABS | PACKAGING STYLE | PACKAGING SPECIFICATION |
|-----------------|---------------|----------------|--------------------|-----------------|-----------------------------------|-----------------|-------------------------|
| 43223-8128 | .180 | 8 | 8 | 2 | 1 | TRAY | PK-44150-004 |
| 43223-8146 | .180 | 8 | 8 | 4 | 3 | ↑ | ↑ |
| 43223-8164 | .180 | 8 | 8 | 6 | 5 | ↑ | ↑ |
| 43223-8182 | .180 | 8 | 8 | 8 | 7 | ↑ | ↑ |
| 43223-8185 | .180 | 8 | 8 | 8 | 1 | ↓ | ↓ |
| 43223-8188 | .180 | 8 | 8 | 4 | 1 | ↓ | ↓ |
| 43223-8194 | .180 | 8 | 2 | 8 | 7 | TRAY | PK-44150-004 |

| | | | | | | | |
|------------|------|---|---|---|---|------|--------------|
| 43223-8301 | .145 | 8 | 8 | 2 | 1 | TRAY | PK-44150-004 |
| 43223-8302 | .145 | 8 | 8 | 4 | 3 | ↑ | ↑ |
| 43223-8303 | .145 | 8 | 8 | 6 | 5 | ↑ | ↑ |
| 43223-8304 | .145 | 8 | 8 | 8 | 7 | ↑ | ↑ |
| 43223-8305 | .145 | 8 | 8 | 8 | 1 | ↓ | ↓ |
| 43223-8306 | .145 | 8 | 8 | 4 | 1 | ↓ | ↓ |
| 43223-8307 | .145 | 8 | 2 | 8 | 7 | TRAY | PK-44150-004 |

SNAP FIT PEG VERSIONS

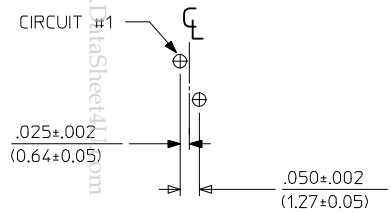
www.DataSheet4U.com

| | |
|------------------------|-----------------|
| SEE SHEET 1 | QUALITY SYMBOLS |
| EC NO: UCP2009-0477 | ▽=0 |
| DRWN:JBELL 2008/09/05 | ▽=0 |
| CHKD:JBELL 2008/09/11 | |
| APPR:FSM/TH 2008/09/11 | |
| DESCRIPTION | |
| REV | |
| K1 | |

| GENERAL TOLERANCES (UNLESS SPECIFIED) | |
|--|--------|
| 4 PLACES ± --- | ± --- |
| 3 PLACES ± --- | ± .015 |
| 2 PLACES ± 0.38 | ± --- |
| 1 PLACE ± --- | ± --- |
| ANGULAR ±1/2° | |
| DRAFT WHERE APPLICABLE MUST REMAIN WITHIN DIMENSIONS | |

| DIMENSION STYLE | |
|-----------------|------------|
| IN/MM | |
| DRAWN BY | DATE |
| JTR | 1993/10/18 |
| CHECKED BY | DATE |
| JTR | 1993/10/18 |
| APPROVED BY | DATE |
| RAS | 1993/10/18 |
| MATERIAL NO. | |
| SEE CHART | |
| SIZE | |
| C | |

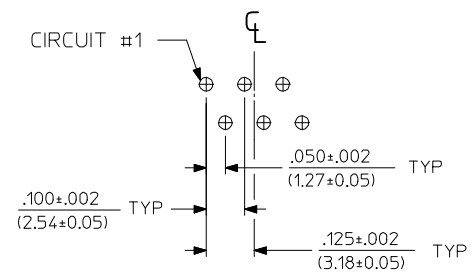
| | | |
|---|--------------|------------------------|
| SCALE | DESIGN UNITS | THIRD ANGLE PROJECTION |
| 2:1 | INCH | ☉ |
| TITLE | | |
| LOW PROFILE GANGED, RIGHT ANGLE MODULAR JACK ASSEMBLY | | |
| MOLEX MOLEX INCORPORATED | | |
| DOCUMENT NO. | SHEET NO. | |
| SDA-43223 | 3 OF 6 | |
| THIS DRAWING CONTAINS INFORMATION THAT IS PROPRIETARY TO MOLEX INCORPORATED AND SHOULD NOT BE USED WITHOUT WRITTEN PERMISSION | | |



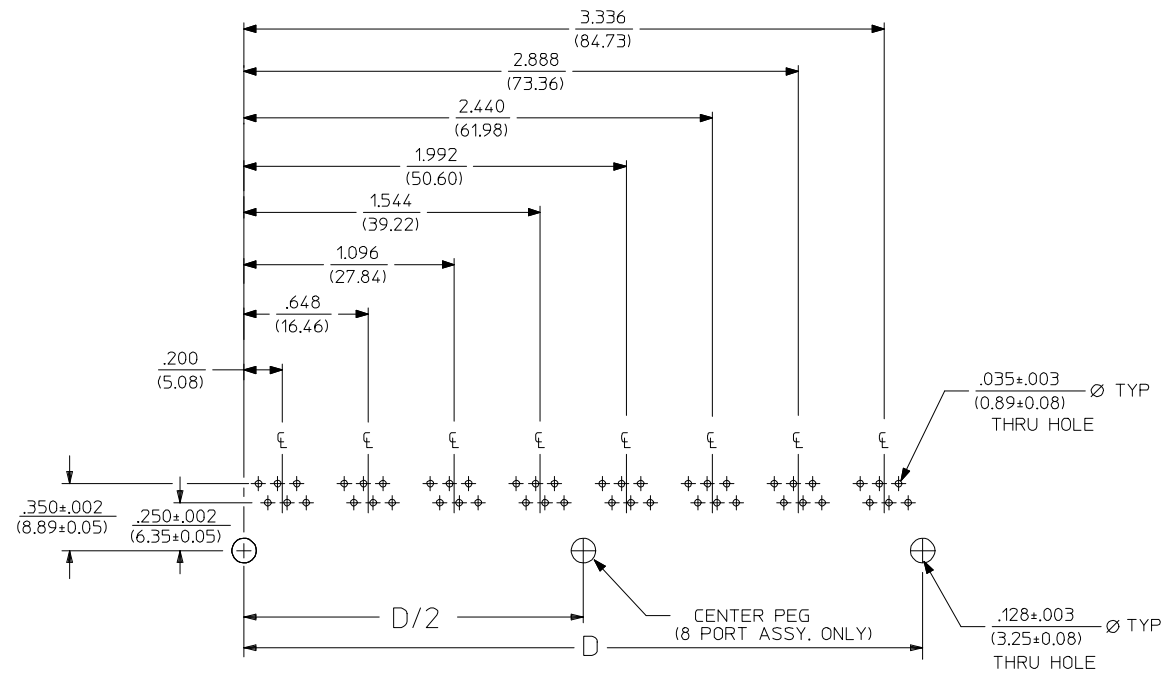
6 LOADED 2 DETAIL
SCALE: 4/1



6 LOADED 4 DETAIL
SCALE: 4/1



6 LOADED 6 DETAIL
SCALE: 4/1

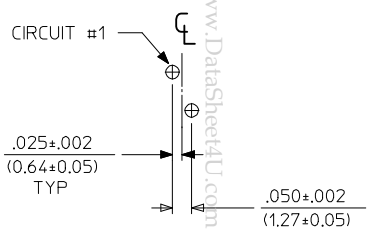


SUGGESTED P.C. BOARD LAYOUT
COMPONENT SIDE OF BOARD
8 PORT, 6 LOADED 6, LAYOUT SHOWN
(SNAP-FIT VERSIONS)

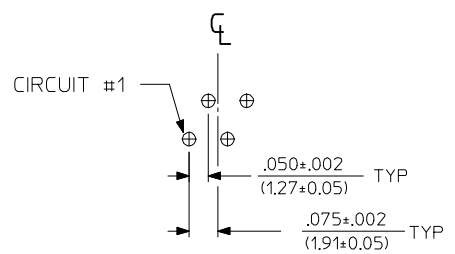
NOTES:
1. RECOMMENDED PCB THICKNESS .062±.005/(1.57±0.13)

| NUMBER OF PORTS | DIM. D |
|-----------------|---------------|
| 2 | .848 (21.54) |
| 3 | 1.296 (32.92) |
| 4 | 1.744 (44.30) |
| 5 | 2.192 (55.68) |
| 6 | 2.640 (67.06) |
| 8 | 3.536 (89.81) |

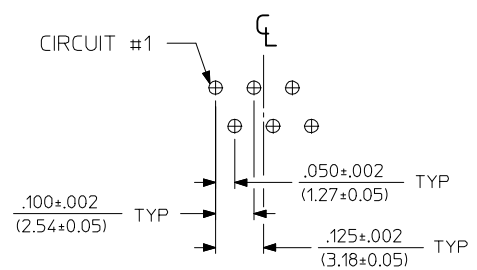
| | | | | | | | | | | |
|---|---------------------|--|-----------------------|----------------------------------|---------------------|----------------------------------|-----------------------------|--|---------------------------|--|
| SEE SHEET 1 EC NO: UCP2009-0477 DRWN:JBELL 2008/09/05 CHKD:JBELL 2008/09/11 APPR:FSM/TH 2008/09/11 K1 | QUALITY SYMBOLS | GENERAL TOLERANCES (UNLESS SPECIFIED) | | DIMENSION STYLE IN/MM | | SCALE 2:1 | DESIGN UNITS INCH | THIRD ANGLE PROJECTION | | |
| | | 4 PLACES ± --- ± --- | 3 PLACES ± --- ± .015 | 2 PLACES ± 0.38 ± --- | 1 PLACE ± --- ± --- | DRAWN BY JTR | DATE 1993/10/18 | LOW PROFILE GANGED, RIGHT ANGLE MODULAR JACK ASSEMBLY | | |
| | | ANGULAR ±1/2° | | | | CHECKED BY JTR | DATE 1993/10/18 | | | |
| | | DRAFT WHERE APPLICABLE MUST REMAIN WITHIN DIMENSIONS | | | | APPROVED BY RAS | | DATE 1993/10/18 | MOLEX INCORPORATED | |
| | | | | MATERIAL NO. SEE SHT 3 | | DOCUMENT NO. SDA-43223 | | SHEET NO. 4 OF 6 | | |



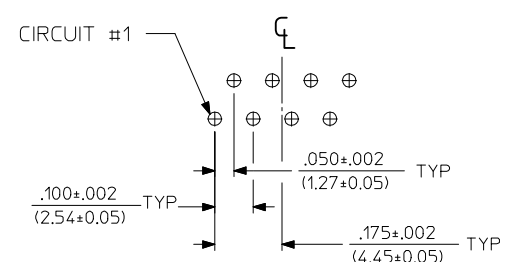
8 LOADED 2 DETAIL
SCALE: 4/1



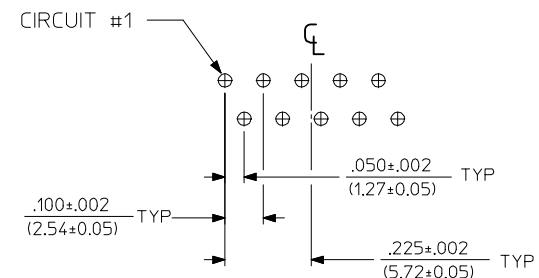
8 LOADED 4 DETAIL
SCALE: 4/1



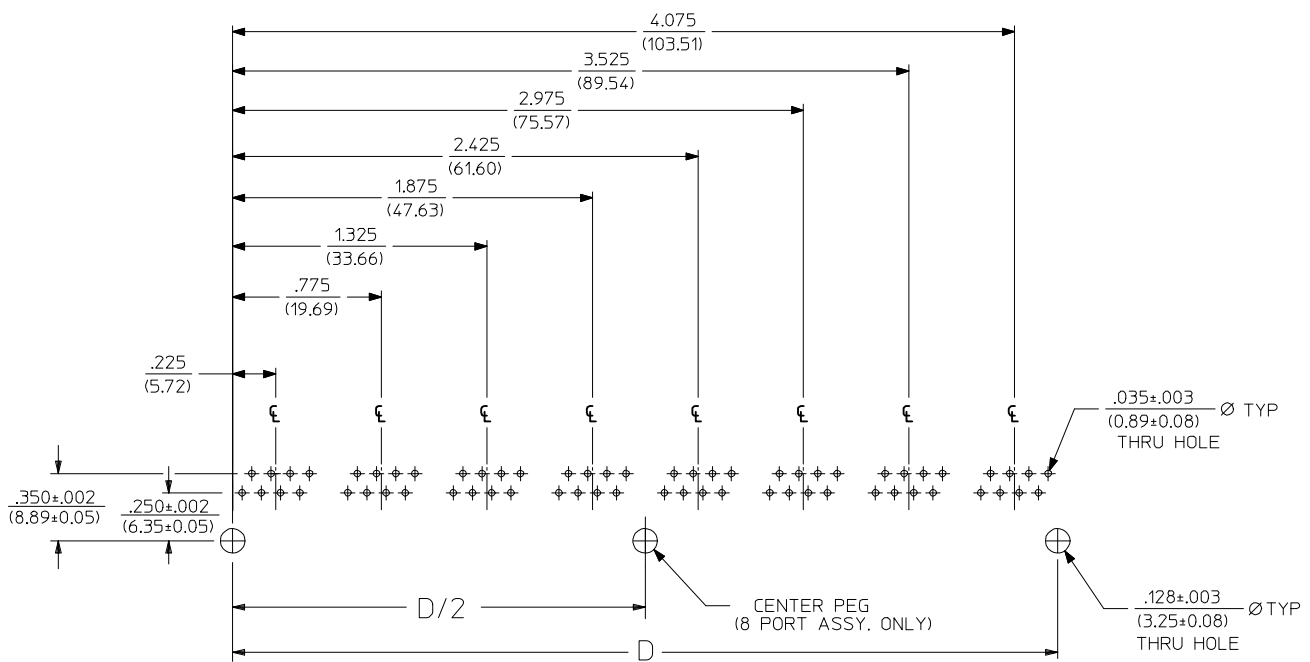
8 LOADED 6 DETAIL
SCALE: 4/1



8 LOADED 8 DETAIL
SCALE: 4/1



8 LOADED 10 DETAIL
SCALE: 4/1



SUGGESTED P.C. BOARD LAYOUT
COMPONENT SIDE OF BOARD
8 PORT, 8 LOADED 8
(SNAP-FIT VERSIONS)

NOTES:
1. RECOMMENDED PCB THICKNESS: .062±.005/(1.57±0.13)

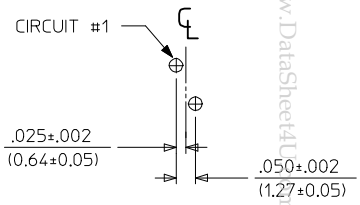
| NUMBER OF PARTS | DIM. D |
|-----------------|--------|
| 1,000 (25.40) | |
| 1,550 (39.37) | |
| 2,100 (53.34) | |
| 2,650 (67.31) | |
| 3,200 (81.28) | |
| 4,300 (109.32) | |
| 8 | |

| | |
|--|-------------------------------|
| SEE SHEET 1 EC NO: UCP2009-0477 DRWN:JBELL 2008/09/05 CHKD:JBELL 2008/09/11 APPR:FSM/TH 2008/09/11 | QUALITY SYMBOLS ▽=0 ▽=0 |
|--|-------------------------------|

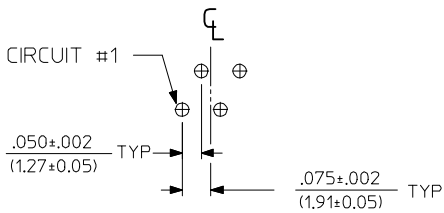
| GENERAL TOLERANCES (UNLESS SPECIFIED) | |
|---------------------------------------|---------|
| mm | INCH |
| 4 PLACES ± .015 | ± .0005 |
| 3 PLACES ± .015 | ± .0005 |
| 2 PLACES ± 0.38 | ± .015 |
| 1 PLACE ± .015 | ± .0005 |
| ANGULAR ±1/2° | |

| DIMENSION STYLE | |
|-----------------|------------|
| IN/MM | |
| DRAWN BY | DATE |
| JTR | 1993/10/18 |
| CHECKED BY | DATE |
| JTR | 1993/10/18 |
| APPROVED BY | DATE |
| RAS | 1993/10/18 |

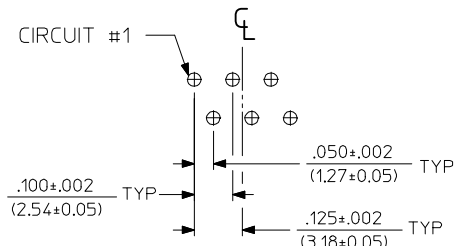
| | | |
|---|-------------------|------------------------|
| SCALE 2:1 | DESIGN UNITS INCH | THIRD ANGLE PROJECTION |
| LOW PROFILE GANGED, RIGHT ANGLE MODULAR JACK ASSEMBLY | | |
| MOLEX INCORPORATED | | SHEET NO. 5 OF 6 |
| SEE SHT 3 SDA-43223 | | DOCUMENT NO. |
| THIS DRAWING CONTAINS INFORMATION THAT IS PROPRIETARY TO MOLEX INCORPORATED AND SHOULD NOT BE USED WITHOUT WRITTEN PERMISSION | | |



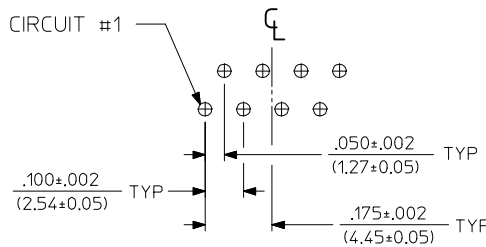
8 LOADED 2 DETAIL
SCALE: 4/1



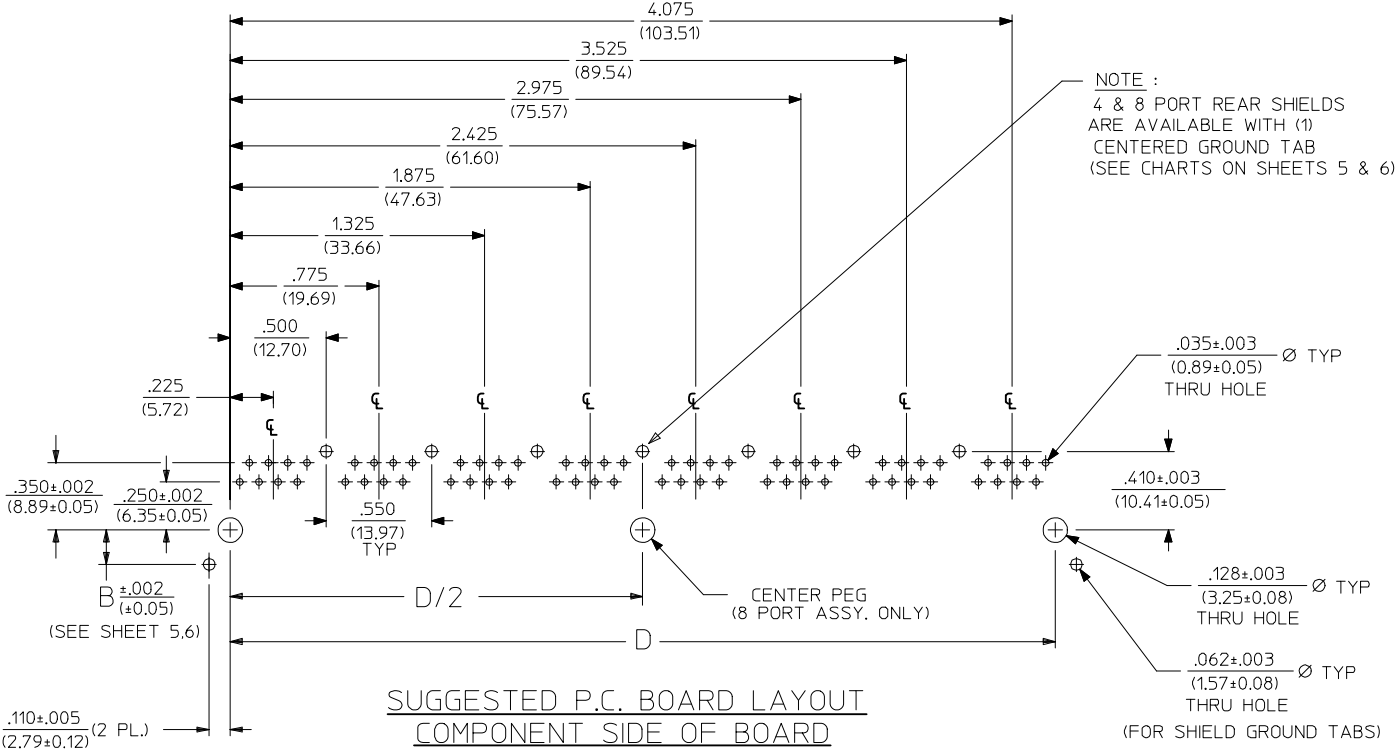
8 LOADED 4 DETAIL
SCALE: 4/1



8 LOADED 6 DETAIL
SCALE: 4/1



8 LOADED 8 DETAIL
SCALE: 4/1



SUGGESTED P.C. BOARD LAYOUT
COMPONENT SIDE OF BOARD
8 PORT, 8 LOADED 8
(SHIELDED) LAYOUT SHOWN
(SNAP-FIT VERSIONS)

NOTE:
4 & 8 PORT REAR SHIELDS
ARE AVAILABLE WITH (1)
CENTERED GROUND TAB
(SEE CHARTS ON SHEETS 5 & 6)

NOTES:
1. RECOMMENDED PCB THICKNESS: .062±.005/(1.57±0.13)

www.DataSheet4U.com

| NUMBER OF PORTS | DIM. D |
|-----------------|----------|
| 1,000 | (25.40) |
| 2,100 | (53.34) |
| 3,200 | (81.28) |
| 4,300 | (109.32) |

| SEE SHEET 1 EC NO: UCP2009-0477 DRWN:JBELL 2008/09/05 CHKD:JBELL 2008/09/11 APPR:FSM/TH 2008/09/11 K1 | QUALITY SYMBOLS ▽=0 ▽=0 | GENERAL TOLERANCES (UNLESS SPECIFIED) <table border="1"> <thead> <tr> <th></th> <th>mm</th> <th>INCH</th> </tr> </thead> <tbody> <tr> <td>4 PLACES</td> <td>± .---</td> <td>± .---</td> </tr> <tr> <td>3 PLACES</td> <td>± .---</td> <td>± .015</td> </tr> <tr> <td>2 PLACES</td> <td>± 0.38</td> <td>± .---</td> </tr> <tr> <td>1 PLACE</td> <td>± .---</td> <td>± .---</td> </tr> </tbody> </table> ANGULAR ±1/2° | | mm | INCH | 4 PLACES | ± .--- | ± .--- | 3 PLACES | ± .--- | ± .015 | 2 PLACES | ± 0.38 | ± .--- | 1 PLACE | ± .--- | ± .--- | DIMENSION STYLE IN/MM | SCALE 2:1 | DESIGN UNITS INCH | THIRD ANGLE PROJECTION |
|--|--|--|---------------------------|---------------------|---|--------------------|--------|--------|----------|--------|--------|----------|--------|--------|---------|--------|--------|--------------------------|--------------|----------------------|------------------------|
| | | mm | INCH | | | | | | | | | | | | | | | | | | |
| | 4 PLACES | ± .--- | ± .--- | | | | | | | | | | | | | | | | | | |
| | 3 PLACES | ± .--- | ± .015 | | | | | | | | | | | | | | | | | | |
| 2 PLACES | ± 0.38 | ± .--- | | | | | | | | | | | | | | | | | | | |
| 1 PLACE | ± .--- | ± .--- | | | | | | | | | | | | | | | | | | | |
| DRAFT WHERE APPLICABLE MUST REMAIN WITHIN DIMENSIONS | DRAWN BY JTR | DATE 1993/10/18 | CHECKED BY JTR | DATE 1993/10/18 | APPROVED BY RAS | DATE 1993/10/18 | | | | | | | | | | | | | | | |
| MATERIAL NO. SEE SHT 3 | TITLE LOW PROFILE GANGED, RIGHT ANGLE MODULAR JACK ASSEMBLY | MOLEX INCORPORATED | DOCUMENT NO. SDA-43223 | SHEET NO. 6 OF 6 | THIS DRAWING CONTAINS INFORMATION THAT IS PROPRIETARY TO MOLEX INCORPORATED AND SHOULD NOT BE USED WITHOUT WRITTEN PERMISSION | | | | | | | | | | | | | | | | |