

THE NEW KEW-HOBBY BRITAIN'S PREMIER DOMESTIC PRESSURE WASHER



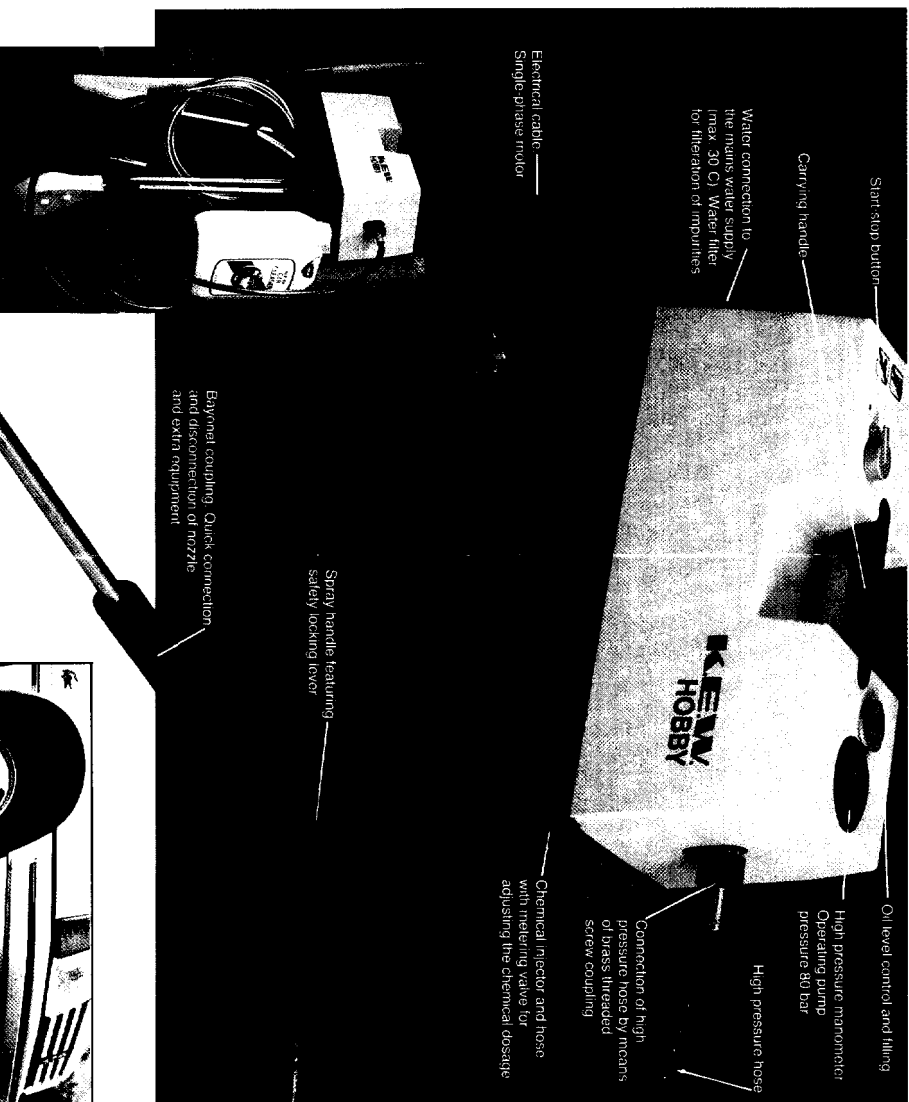
The Sand Baster™ tackles rust, flaking paintwork, or embedded grime. Better than a wire brush, easy to use and dust-free.



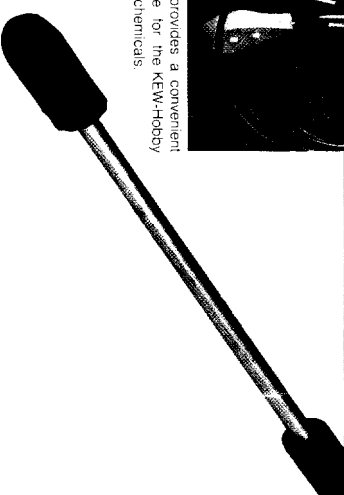
The engine of a motor cycle is quickly filled with dirt and oil. Thanks to the Kew-Hobby all dirt is removed in no time, even from inaccessible parts.



The rotary brush is ideal for large flat surfaces. Save time for more touring and less cleaning.

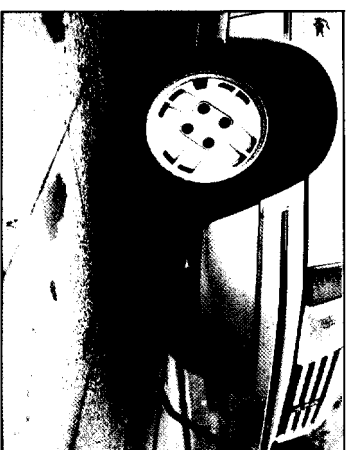


Kew wall rack provides a convenient and tidy storage for the Kew-Hobby accessories and chemicals.

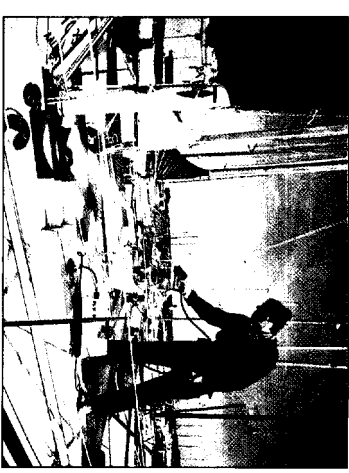


MULTI SPEED™ nozzle at which the pressure is quickly adjusted from low to high, and the spray angle quickly changed from a wide angle spray to a concentrated pencil jet. Adjustable spray angle at low pressure 0-60° at high pressure 0-30°

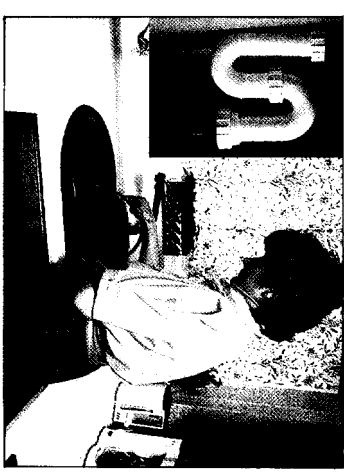
Trademark



The specially designed Gutzunder cleans hidden dirt and road salt underneath the car and so helps prevent corrosion.



Boat owners know how tough it is to clean decks, keels and bilges. The Kew-Hobby plus Boat cleaner and wax cuts the job in half.

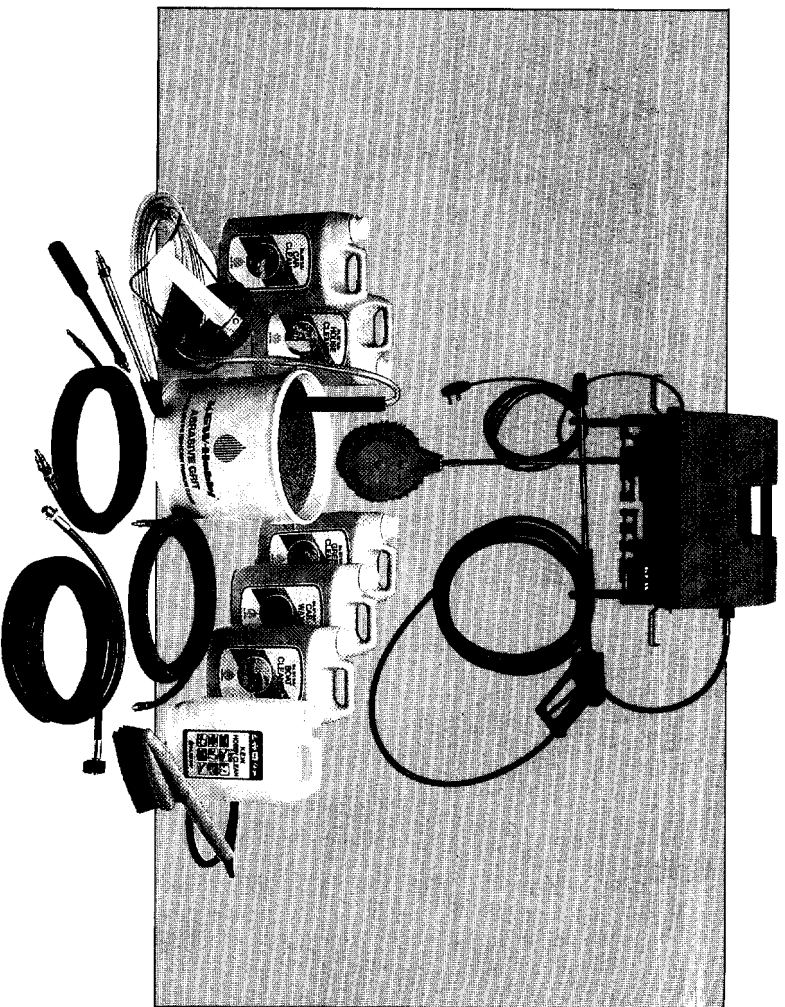


The Kew-Hobby tube cleaner will negotiate bends, clear blockages and clean narrow bore tubes and pipes.



Attack blocked pipes with this specially designed cleaner. While the forward facing jet blasts away the blockage, the three lateral jets force the nozzle forwards and prise away the remaining debris.

THE VERSATILE CLEANER



The K.E.W.-Hobby is a motorised, high pressure water pump to which you can attach an array of useful specialised accessories. The MULTI-SPEED* nozzle allows you to adjust the cleaning power to deliver a wide angle spray or concentrated pencil jet. And you have a choice of water pressures – low or high, up to a maximum powerful jet which cleans at 250 mph (equivalent to a water pressure of around 1160 psi).

* Trademark

To maximise the versatility of the K.E.W.-Hobby, there is a range of optional accessories, as well as specially formulated chemicals and waxes.

- * Rotary Brush
- * Washing Brush
- * Wet Sand Blaster
- * Drain Cleaner
- * Tube Cleaner
- * Extension Tube
- * Extension Hose
- * Distance Wheel
- * Guzzler Lance
- * Wall Rack

For extra tough flat surface cleaning
Ideal for cars
Strips away rust and paint. Ideal for metal, stone or woodwork
Blasts away blockages
For narrow pipe cleaning
For higher reaches
Extends working range to 14m
For controlled, set distance cleaning
For under chassis cleaning
For tidy storage

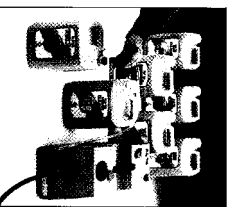
K.E.W. have developed their own range of highly specific chemicals and waxes which should be used routinely with the K.E.W.-Hobby for the best possible results.

The range includes general purpose, house, car and boat cleaners. Plus waxes to add the final sparkling touch to cars and boats.

Algae and moss demand special treatment and hence we recommend the K.E.W.-Hobby 'Green' cleaner.

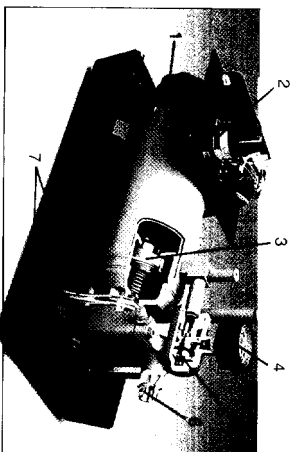
Finally, when a Sand Blaster is called for, make sure you have K.E.W. Abrasive Grit – a hard-working additive for really tough jobs.

In practice, the chemicals and waxes are introduced into the spray by means of the integral injector tube. Simply place the tube in the chemical/wax container, adjust the dosage using the metering valve, set to low pressure and you're ready to tackle any cleaning chore.



K.E.W.-Hobby TOUGH. RELIABLE. EFFECTIVE.

The new K.E.W.-Hobby is a modern, compact, high quality product that's tough enough to tackle any domestic outdoor cleaning chore. It houses a reliable corrosion-resistant 2.9 h.p. motor which generates a water pressure of around 1160 psi when required. In common with all K.E.W. products, the K.E.W.-Hobby is characterised by attractive yet practical design and precision engineering. Check out the following technical details.



- 1 Single-phase electric motor generates up to 2.9 h.p. Enclosed in stainless steel water cooled jacket.
- 2 On/off switch. Thermostatic cut-out prevents over-heating.
- 3 Three cylinder axial piston pump with stainless steel pistons running on needle bearings. Robust, reliable performance.
- 4 Manometer – glycerine filled pressure gauge shows operating pressure.
- 5 K.E.W.'s patented decompression valve eases pressure after every job.
- 6 Brass high pressure outlet for rapid hose connection.
- 7 Chemical injection tube.

FOR THE TECHNICALLY MINDED

Technical data for the 01K	
Model	1001K
Pump pressure	bar/psi 80/1160
Water capacity at max pressure	11/min-UKgpm 8.5 litres/1.87 gallons
Single phase motor. Rated effect	kw/hp 2.1/2.9*
Power consumption	A 8.8*
Max/min pressure of inlet water	bar/psi 15/0-218/0
Max temperature of water	°C/°F 30/86
Nozzle. Spray angle high pressure/low pressure	degrees 0-30°/0-60°
Can be carried. Weight without hose and handle	kg/lbs 17.5/38.6

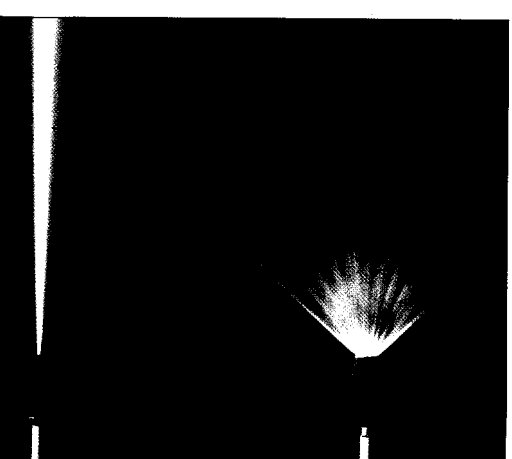
* 240V 50 Hz (Rated effect)
Data at 3 bar/4 psi inlet pressure

ALL ROUND PERFORMANCE

The K.E.W.-Hobby MULTI-SPEED* nozzle allows you to choose high or low pressure cleaning. In addition, you can adjust from a concentrated pencil jet to a wide-angled spray.

Since no two cleaning jobs are the same, only experience can tell you which combination of water pressure and spray dispersion is likely to get the best results. But that's the ultimate benefit of the K.E.W.-Hobby – no matter what the chore, the K.E.W.-Hobby can be adjusted to cope. Quite simply, for all round power and performance you can't buy a better pressure washer.

* Trademark



K.E.W.

KEW CLEANING SYSTEMS LTD
KEW House, Gaimley Industrial Estate,
Perrin, Cwmbran, CA11 9BN
Tel: (0798) 65777 Telex: 64 306 Kew G Fax: (0798) 64713