




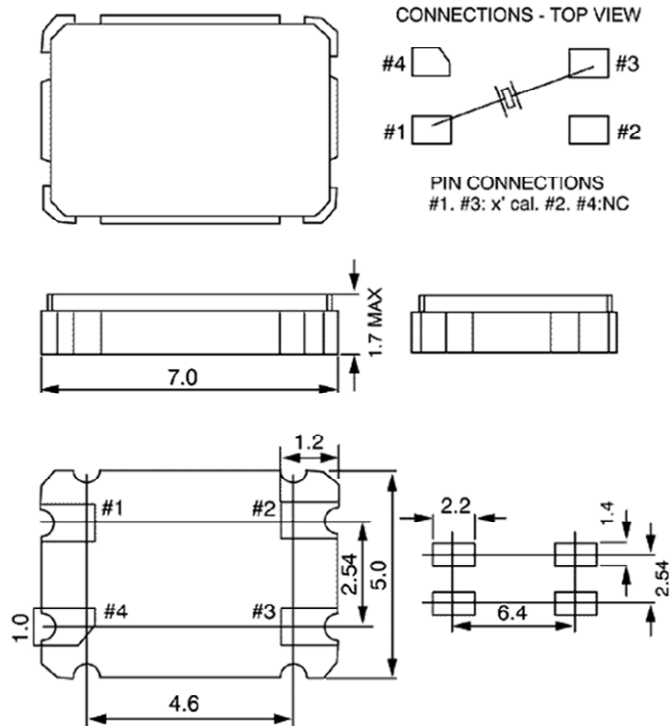
Product is compliant to RoHS directive 
and fully compatible with lead free assembly

VXC1-1133-26M5625000

7 x 5 x 1.7mm 4 pads

Package:	C1 = 7 x 5 x 1.7 mm 4 pads
Frequency:	26.5625000MHz
Mode:	Fundamental
Stability Options	±30 ppm over -40°C to +85°C
Load Capacitance (CL):	10 pF
STD Calibration Tolerance	±30 ppm at +25°C
ESR:	40 Ohms max.
Shunt Capacitance (Co):	7 pF max
Drive Level:	10 to 500 uW
Crystal Aging:	< 5 PPM/ 1st year
Standard Packaging:	Tape & Reel (1,000 pc Minimum)
P/N:	VXC1-1133-26M5625000

Package Drawing (mm)



Typical Reflow Profile

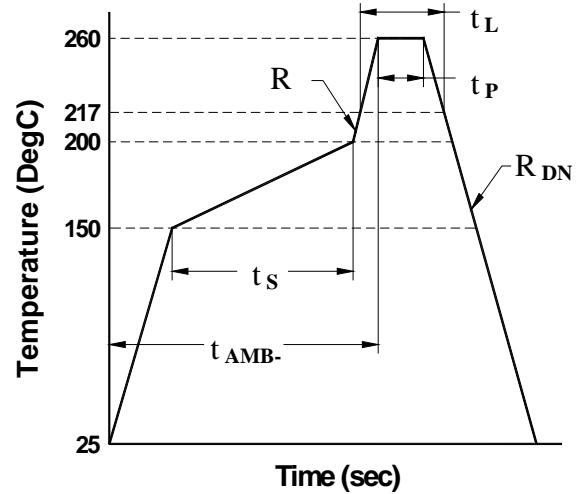


Table 1. Reflow Profile (IPC/JEDEC J-STD-020B)

Parameter	Symbol	Value
PreHeat Time	t_s	60 sec Min, 200 sec Max
Ramp Up	R_{UP}	3 °C/sec Max
Time Above 217 °C	t_L	60 sec Min, 150 sec Max
Time To Peak Temperature	t_{AMB-P}	480 sec Max
Time At 260 °C (max)	t_p	10 sec Max
Time At 240°C (max)	$tp2$	60 sec Max
Ramp Down	R_{DN}	6 °C/sec Max

Revision History

Date	Initial
10/25/2009	Initial

For Additional Information Please Contact:



USA: Vectron International • 267 Lowell Road, Hudson, NH 03051

• Tel: 1-888-VECTRON-1 • Fax: 1-888-FAX-VECTRON

EUROPE: Landstrasse, D-74924, Neckarbischofsheim, Germany •

Tel: 49 (0) 7268 8010 • Fax: 49 (0) 7268 801281

ASIA: Vectron Asia Pacific Sales 1F~2F. No.8 Workshop No.308 Fenju Rd., WaiGaoQiao

Free Trade Zone, Pudong New Area Shanghai, China 200131

•Tel: 8621 50480777 • Fax: 8621 50481881

Vectron International reserves the right to make changes to the product(s) and/or information contained herein without notice. No liability is assumed as a result of their use or application. No rights under any patent accompany the sale of any such product(s) or information.