

PLEASE CHECK WWW.MOLEX.COM FOR LATEST PART INFORMATION

Part Number: [0894001620](#)
Status: **Active**
Description: 2.00mm(.079") Pitch Wire-to-Board Header, Vertical, 16 Circuits, with Kinked PC Tail

Documents:

[3D Model](#) [Product Specification PS-87369-0002 \(PDF\)](#)
[Drawing \(PDF\)](#) [RoHS Certificate of Compliance \(PDF\)](#)

Agency Certification

CSA LR19980

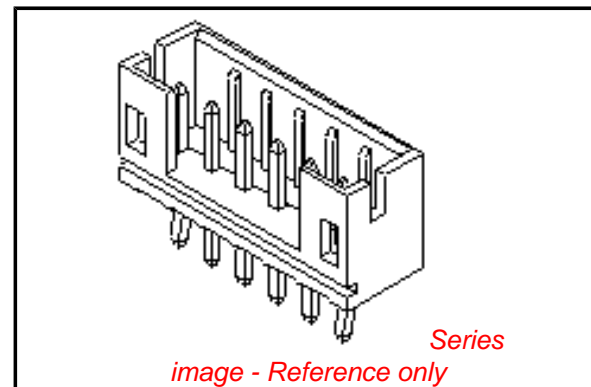
General

Product Family PCB Headers
 Series [89400](#)
 Application Wire-to-Board
 Product Name N/A

Physical

Breakaway No
 Circuits (Loaded) 16
 Circuits (maximum) 16
 Color - Resin Natural
 Durability (mating cycles max) 30
 First Mate / Last Break No
 Flammability 94V-0
 Glow-Wire Compliant No
 Guide to Mating Part No
 Keying to Mating Part None
 Lock to Mating Part Yes
 Mated Height (in) 0.287 In
 Mated Height (mm) 7.30 mm
 Material - Plating Mating Tin
 Material - Plating Termination Tin
 Material - Resin Nylon
 Number of Rows 1
 Orientation Vertical
 PC Tail Length (in) 0.134 In
 PC Tail Length (mm) 3.40 mm
 PCB Locator No
 PCB Retention Yes
 PCB Thickness Recommended (in) 0.045 In
 PCB Thickness Recommended (mm) 1.20 mm
 Packaging Type Bag
 Pitch - Mating Interface (in) 0.079 In
 Pitch - Mating Interface (mm) 2.00 mm
 Plating min: Mating (µin) 50
 Plating min: Mating (µm) 1.27
 Plating min: Termination (µin) 50
 Plating min: Termination (µm) 1.27
 Polarized to PCB No
 Shrouded Partial
 Stackable No
 Temperature Range - Operating -25°C to +85°C
 Termination Interface: Style Through Hole

Electrical



EU RoHS

ELV and RoHS Compliant
REACH SVHC
 Not Reviewed
Halogen-Free Status
 Not Reviewed

China RoHS



Need more information on product environmental compliance?

Email productcompliance@molex.com
 For a multiple part number RoHS Certificate of Compliance, [click here](#)

Please visit the [Contact Us](#) section for any non-product compliance questions.

Search Parts in this Series

[89400Series](#)

Mates With

[87369 Crimp Housing](#)

Current - Maximum per Contact
Voltage - Maximum

4A
250V

Material Info

Reference - Drawing Numbers

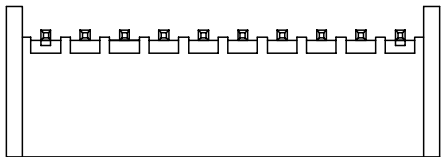
Product Specification
Sales Drawing

PS-87369-0002, RPS-87369-001
SD-89400-**2*

This document was generated on 06/08/2010

PLEASE CHECK WWW.MOLEX.COM FOR LATEST PART INFORMATION

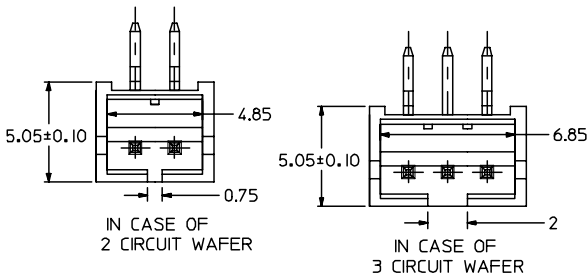
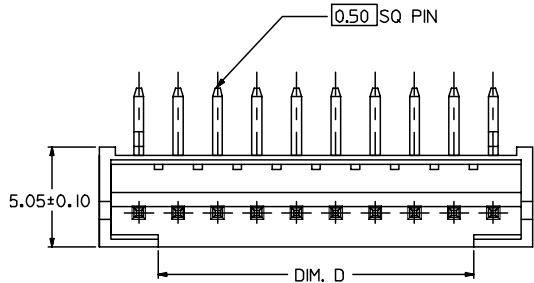
10 9 8 7 6 5 4 3 2 1



KINK TO BE APPLIED AS FOLLO

CKT NO.	1	2	3	4	5	N-2	N-1	N
6 CKT	①	---	---	---	---	---	---	①
5 CKT	①	---	---	①	---	---	---	---
4 CKT	①	---	---	①	---	---	---	---
3 CKT	①	---	①	---	---	---	---	---
2 CKT	①	①	---	---	---	---	---	---

CIRCUITS	ORDER NO.	DIM. C	DIM. D	DIM. A	REMARK
2	89401-021*	2.00	0.75	6.00	
3	89401-031*	4.00	2.00	8.00	
4	89401-041*	6.00	4.00	10.00	
5	89401-051* 89401-0520	8.00	6.00	12.00	VOID PIN 4
6	89401-061*	10.00	8.00	14.00	
7	89401-071*	12.00	10.00	16.00	
8	89401-081*	14.00	12.00	18.00	
9	89401-091*	16.00	14.00	20.00	
10	89401-101* 89401-1020	18.00	16.00	22.00	VOID PIN 7
11	89401-111*	20.00	18.00	24.00	
12	89401-121*	22.00	20.00	26.00	
13	89401-131*	24.00	22.00	28.00	
14	89401-141*	26.00	24.00	30.00	
15	89401-151*	28.00	26.00	32.00	
16	89401-161*	30.00	28.00	34.00	



PART NO. LEGEND

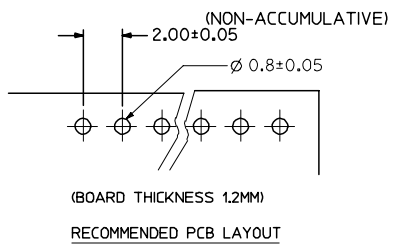
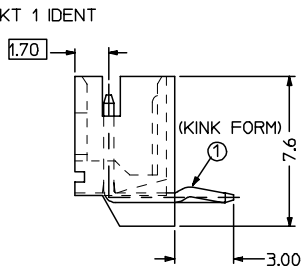
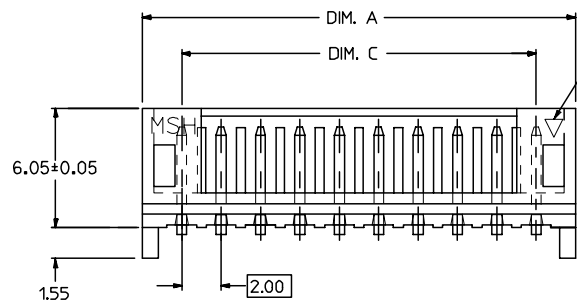
89401 - ** 1(2) *

CKT SIZE

COLOR OPTION
 0 - NATURAL (WHITE)
 2 - RED
 3 - YELLOW
 4 - BLUE
 6 - GREEN
 7 - BLACK

NOTE:

- PRODUCT SPEC. PS-87369-0001 APPLIES.
- BULK PACK IN PVC BAG WITH 1000 PCS PER BAG.
- MATERIAL :
 HOUSING - NYLON 66 94V0. COLOR: SEE OPTION
 TERMINAL - BRASS
- FINISH :
 TERMINAL - TIN THICKNESS 1.27-2.54 MICROMETER OVER
 NICKEL THICKNESS 2.54 MICROMETER MIN OVERALL
 COPPER THICKNESS 1.07 MICROMETER MIN OVERALL



NEW RELEASE
 EC NO: SH2006-0287
 DRWN:DHU 2005/12/06
 CHKD:HARVEY 2005/12/08
 APPR:GCHEN 2005/12/09

QUALITY SYMBOLS
 ▽=0
 ▽=0

GENERAL TOLERANCES (UNLESS SPECIFIED)	
mm	INCH
4 PLACES ±---	±---
3 PLACES ±---	±---
2 PLACES ±0.25	±---
1 PLACE ±0.25	±---
ANGULAR ± 3°	

DIMENSION STYLE	
MM ONLY	
DRAWN BY	DATE
SAM SHIN	1998/10/22
CHECKED BY	DATE
APPROVED BY	DATE

SCALE	DESIGN UNITS	THIRD ANGLE PROJECTION
1:4	METRIC	☉
2.0MM WIRE-BOARD RIGHT ANGLE HEADER		
MOLEX INCORPORATED		
MATERIAL NO.	DOCUMENT NO.	SHEET NO.
SEE CHART	SD-89401-**1*	1 OF 1

9 8 7 6 5 4 3 2 1