

**PLEASE CHECK WWW.MOLEX.COM FOR LATEST PART INFORMATION**

**Part Number:** [0918139011](#)  
**Status:** **Active**  
**Overview:** [kk](#)  
**Description:** 5.08 (.200") Pitch, KK®, CRP Terminal HSG, Glow Wire compatible, 11 Circuits, White, Glow Wire Compatible

**Documents:**

[3D Model](#) [RoHS Certificate of Compliance \(PDF\)](#)  
[Drawing \(PDF\)](#)

**General**

Product Family	Crimp Housings
Series	<a href="#">91813</a>
Overview	<a href="#">kk</a>
Product Name	KK®

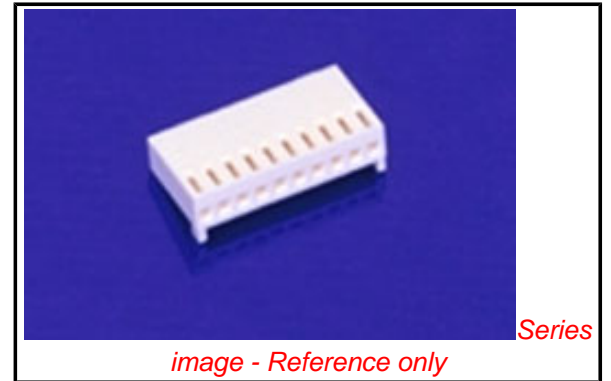
**Physical**

Breakaway	No
Circuits (maximum)	11
Color - Resin	Natural (White)
Gender	Female
Glow-Wire Compliant	Yes
Material - Resin	Nylon
Number of Rows	1
Packaging Type	Bag
Panel Mount	No
Pitch - Mating Interface (in)	0.200 In
Pitch - Mating Interface (mm)	5.08 mm
Pitch - Term. Interface (in)	0.200 In
Pitch - Term. Interface (mm)	5.08 mm
Polarized to Mating Part	Yes
Ports	1
Stackable	No
Temperature Range - Operating	0°C to +75°C

**Material Info**

**Reference - Drawing Numbers**

Sales Drawing	SD-91813-001
---------------	--------------



**EU RoHS**  
**ELV and RoHS**  
**Compliant**  
**REACH SVHC**  
 Not Reviewed  
**Halogen-Free**  
**Status**  
**Not Reviewed**

**China RoHS**

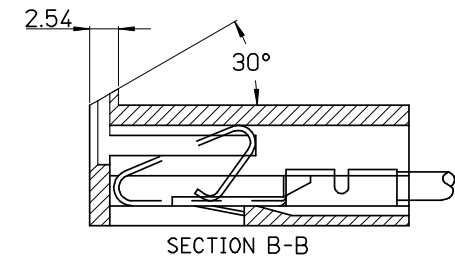
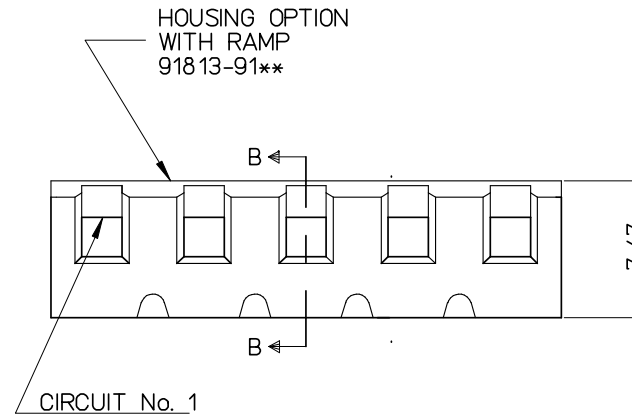
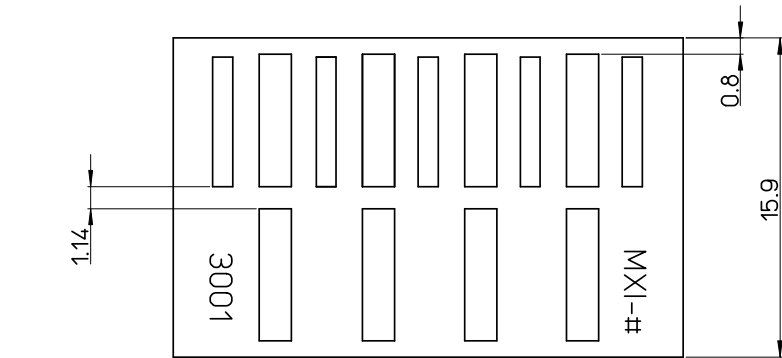
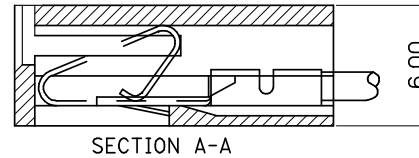
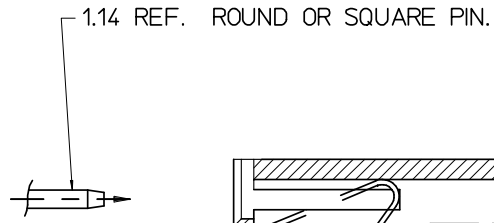
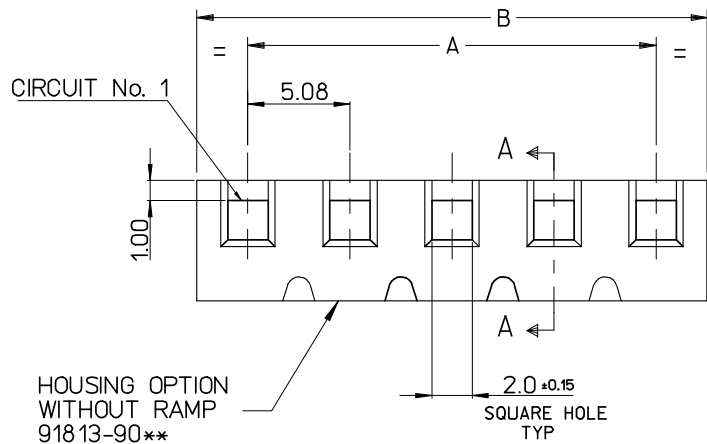


**Need more information on product environmental compliance?**

Email [productcompliance@molex.com](mailto:productcompliance@molex.com)  
 For a multiple part number RoHS Certificate of Compliance, [click here](#)

Please visit the [Contact Us](#) section for any non-product compliance questions.

**Search Parts in this Series**  
[91813Series](#)



20	91813-9020	91813-9120	96.52 ± .3	101.60 ±.3
19	-9019	-9119	91.44 ±0.3	96.52 ±.3
18	-9018	-9118	86.36 ±0.3	91.44 ±.3
17	-9017	-9117	81.28 ±0.3	86.36 ±.3
16	-9016	-9116	76.20 ±0.25	81.28 ±.3
15	-9015	-9115	71.12 ±0.25	76.20 ±.3
14	-9014	-9114	66.04 ±0.25	71.12 ±.3
13	-9013	-9113	60.96 ±0.25	66.04 ±.3
12	-9012	-9112	55.88 ±0.25	60.96 ±.3
11	-9011	-9111	50.80 ±0.20	55.88 ±.3
10	-9010	-9110	45.72 ±0.20	50.80 ±.3
9	-9009	-9109	40.64 ±0.20	45.72 ±.3
8	-9008	-9108	35.56 ±0.20	40.64 ±.3
7	-9007	-9107	30.48 ±0.20	35.56 ±.3
6	-9006	-9106	25.40 ±0.10	30.48 ±.3
5	-9005	-9105	20.32 ±0.10	25.40 ±.15
4	-9004	-9104	15.24 ±0.10	20.32 ±.15
3	-9003	-9103	10.16 ±0.10	15.24 ±.15
2	91813-9002	91813-9102	5.08 ±0.10	10.16 ±.15
			A	B
			DIMENSION	

**NOTE:**

1. MATERIAL: POLAMIDE (PA6), UL-94 V-2  
COLOUR WHITE
2. THIS HOUSING USES KK TERM. No's. 2478, 2578 & 2878
3. COLOUR VARIATION MAY BE VISIBLE ON THE HOUSING SURFACES
4. PRODUCT SPECIFICATION: PS-99020-0087

ADDED PROD. SPEC EC NO: E2008-0301 DRWN:ILK/ERNAN 2008/02/04 CHKD: 2008/02/06 APPR:BMAGUIRE 2008/02/07	QUALITY SYMBOLS  	GENERAL TOLERANCES (UNLESS SPECIFIED)		DIMENSION STYLE <b>MM ONLY</b>		SCALE 7:1	DESIGN UNITS METRIC	THIRD ANGLE PROJECTION		
		4 PLACES ± --- ± ---	mm	INCH	DRAWN BY DWASZKIEWICZ	DATE 2006/06/08	TITLE 5.08MM KK CRP TERM HSG GLOW WIRE COMPATIBLE			
		3 PLACES ± --- ± ---			CHECKED BY J. DENNEHY	DATE	MOLEX INCORPORATED			
		2 PLACES ± 0.25 ± ---			APPROVED BY J. DENNEHY	DATE	DOCUMENT NO. SD-91813-001		SHEET NO. 1 OF 1	
		1 PLACE ± 0.35 ± ---		MATERIAL NO. SEE CHART		THIS DRAWING CONTAINS INFORMATION THAT IS PROPRIETARY TO MOLEX INCORPORATED AND SHOULD NOT BE USED WITHOUT WRITTEN PERMISSION				
		ANGULAR ± 1/2°		DRAFT WHERE APPLICABLE MUST REMAIN WITHIN DIMENSIONS						