

**PLEASE CHECK WWW.MOLEX.COM FOR LATEST PART INFORMATION**

**Part Number:** [0473092651](#)  
**Status:** **Active**  
**Description:** 1.10mm (.043") Pitch microSD Card Header with Detect Switch, Height 2.65mm (.104"), Lead Free

**Documents:**

[3D Model](#) [Product Specification PS-47309-001 \(PDF\)](#)  
[Drawing \(PDF\)](#) [RoHS Certificate of Compliance \(PDF\)](#)

**General**

Product Family	Memory Card Sockets
Series	<a href="#">47309</a>
Button Type	Push-Pull
Comments	<LI>Push-Pull Type
Component Type	I/O Header (Card)
Product Name	microSD Card, TransFlash
Type	N/A

**Physical**

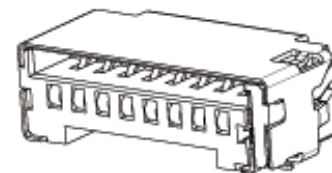
Card Detection Switch	Yes
Circuits (Loaded)	8
Circuits (maximum)	8
Color - Resin	Black
Durability (mating cycles max)	10,000
Ejector Button Side	No Ejector Button Present
Entry Angle	90° Angle
Keying to Mating Part	Yes
Material - Metal	Phosphor Bronze
Material - Plating Mating	Gold
Material - Plating Termination	Gold
Material - Resin	High Temperature Thermoplastic
PCB Locator	No
PCB Mounting Side	Reverse
PCB Retention	Yes
Packaging Type	Embossed Tape on Reel
Pitch - Mating Interface (in)	0.043 In
Pitch - Mating Interface (mm)	1.10 mm
Pitch - Term. Interface (in)	0.043 In
Pitch - Term. Interface (mm)	1.10 mm
Plating min: Mating (µin)	29.5
Plating min: Mating (µm)	0.75
Plating min: Termination (µin)	2
Plating min: Termination (µm)	0.05
Ports	1
Temperature Range - Operating	-40°C to +85°C
Termination Interface: Style	Surface Mount

**Electrical**

Current - Maximum per Contact	0.5A
Shielded	Yes
Voltage - Maximum	5V

**Solder Process Data**

Duration at Max. Process Temperature (seconds)	10
Lead-free Process Capability	Reflow Capable (SMT only)
Max. Cycles at Max. Process Temperature	2



Series

image - Reference only

**EU RoHS**

**ELV and RoHS Compliant**  
**REACH SVHC**  
 Not Reviewed  
**Halogen-Free Status**

**China RoHS**



**Halogen-Free**

**Need more information on product environmental compliance?**

Email [productcompliance@molex.com](mailto:productcompliance@molex.com)  
 For a multiple part number RoHS Certificate of Compliance, [click here](#)

Please visit the [Contact Us](#) section for any non-product compliance questions.

**Search Parts in this Series**

[47309Series](#)

**Mates With**

Standard SIM Card

**Use With**

microSD Card

Process Temperature max. C 255

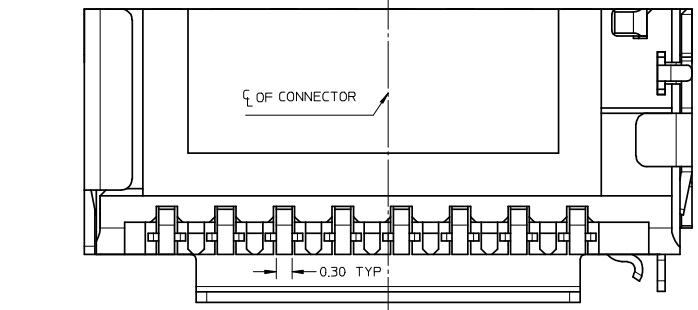
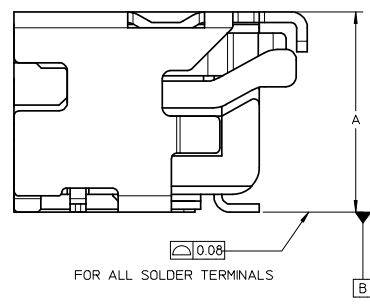
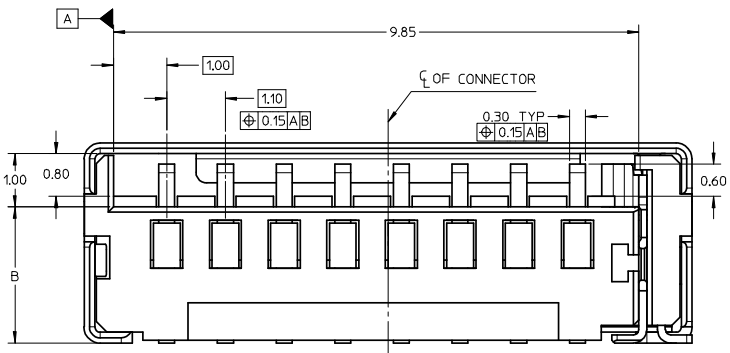
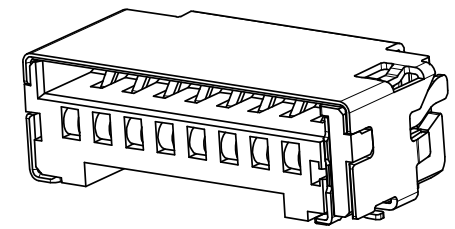
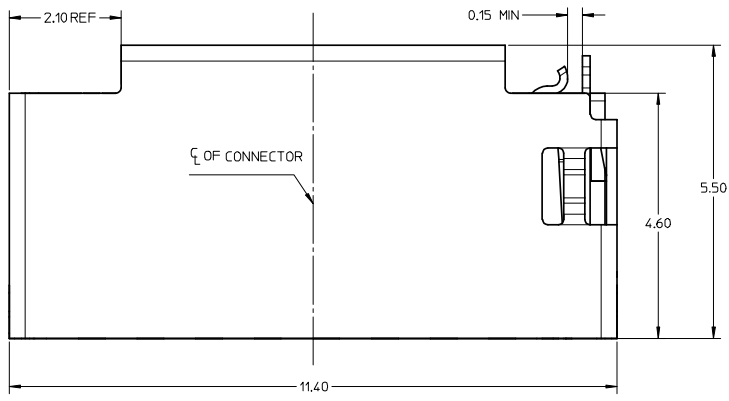
**Material Info**

**Reference - Drawing Numbers**

Product Specification PS-47309-001  
Sales Drawing SD-47309-001

This document was generated on 03/31/2010

**PLEASE CHECK [WWW.MOLEX.COM](http://WWW.MOLEX.COM) FOR LATEST PART INFORMATION**

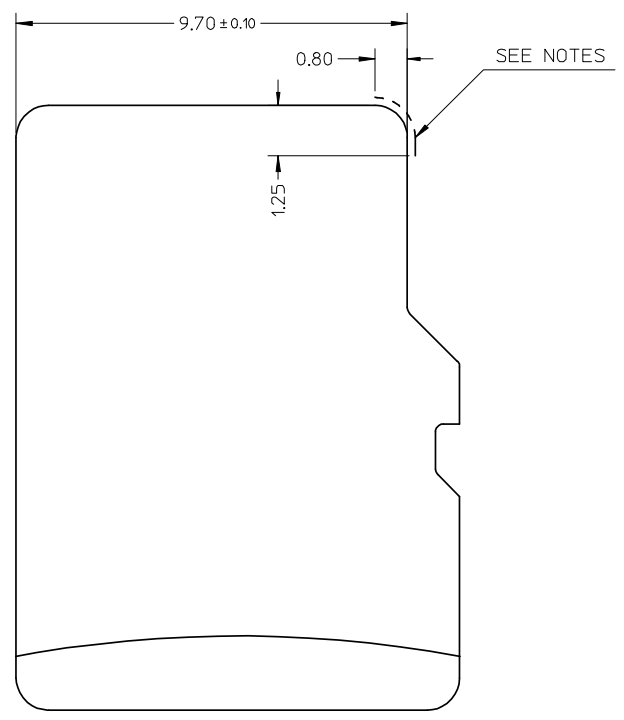
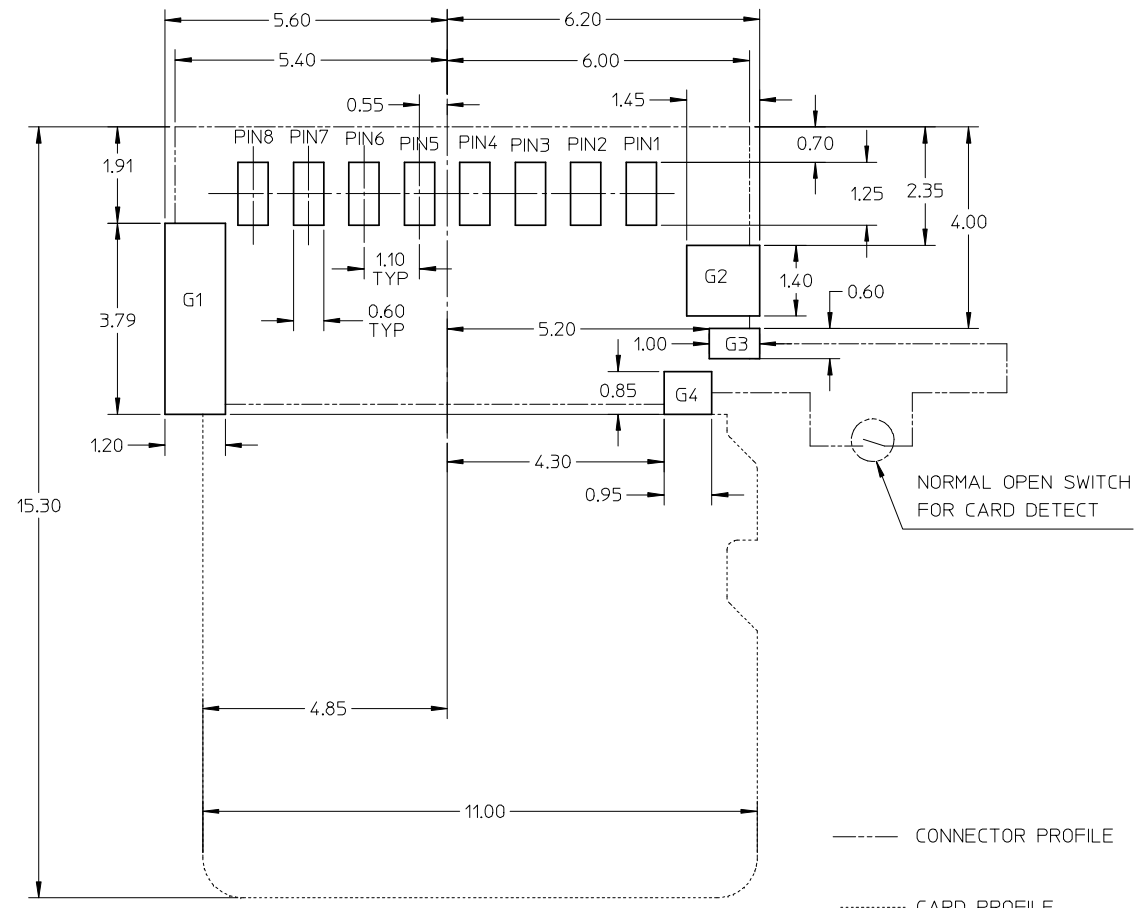


NOTE:  
 1 MATERIAL:  
 1-1 HOUSING : LCP, 30% G/F, UL 94V-0, BLACK  
 1-2 SIGNAL TERMINAL AND DETECT TERMINAL : PHOSPHOR BRONZE  
 1-3 METAL SHELL : STAINLESS STEEL  
 2 FINISH:  
 2-1 SIGNAL TERMINAL : 1.25-6.25 MICRON NICKEL MIN UNDER-PLATED,  
 0.75-1.25 MICRON GOLD MIN ON CONTACT AREA, GOLD FLASH PLATED ON SOLDER AREA  
 2-2 METAL SHELL : GOLD FLASH PLATED OVER NICKEL ON SOLDER AREA  
 2-3 DETECT PIN : 1.25-6.25 MICRON NICKEL MIN UNDER-PLATED  
 GOLD FLASH PLATED ON CONTACT AREA, TIN PLATED ON SOLDER AREA  
 3 PRODUCT SPECIFICATION: PS-47309-001.

473093751	3.75	2.55
473093551	3.55	2.35
473093351	3.35	2.15
473092851	2.85	1.65
473092651	2.65	1.45
PART NUMBER	DIMENSION A	DIMENSION B

REVISION EC NO.: SFA20080393599 DRWN: LLIU10 2008/02/22 CHKD: YLZH02 2008/03/11 APPR: HWANG 2008/04/02	QUALITY SYMBOLS	GENERAL TOLERANCES (UNLESS SPECIFIED)	DIMENSION STYLE	SCALE	DESIGN UNITS	THIRD ANGLE PROJECTION																		
	$\nabla=0$ $\nabla=0$	<table border="1"> <tr> <td></td> <td>mm</td> <td>INCH</td> </tr> <tr> <td>4 PLACES</td> <td>±---</td> <td>±---</td> </tr> <tr> <td>3 PLACES</td> <td>±---</td> <td>±---</td> </tr> <tr> <td>2 PLACES</td> <td>±0.15</td> <td>±---</td> </tr> <tr> <td>1 PLACE</td> <td>±0.25</td> <td>±---</td> </tr> </table>		mm	INCH		4 PLACES	±---	±---	3 PLACES	±---	±---	2 PLACES	±0.15	±---	1 PLACE	±0.25	±---	MM ONLY	15:1	METRIC			
		mm	INCH																					
	4 PLACES	±---	±---																					
3 PLACES	±---	±---																						
2 PLACES	±0.15	±---																						
1 PLACE	±0.25	±---																						
DESCRIPTION	DRAFT WHERE APPLICABLE MUST REMAIN WITHIN DIMENSIONS	<table border="1"> <tr> <td>DRAWN BY</td> <td>DATE</td> <td>TITLE</td> </tr> <tr> <td>XIXU</td> <td>2005/12/24</td> <td rowspan="2">TFR HEADER W/DETECT PIN</td> </tr> <tr> <td>CHECKED BY</td> <td>DATE</td> </tr> <tr> <td>YJWU</td> <td>2005/12/24</td> <td rowspan="2">MOLEX INCORPORATED</td> </tr> <tr> <td>APPROVED BY</td> <td>DATE</td> </tr> <tr> <td>YJWU</td> <td>2005/12/24</td> <td> <table border="1"> <tr> <td>MATERIAL NO.</td> <td>DOCUMENT NO.</td> <td>SHEET NO.</td> </tr> <tr> <td>SEE TABLE</td> <td>SD-47309-001</td> <td>1 OF 2</td> </tr> </table> </td> </tr> </table>	DRAWN BY	DATE	TITLE	XIXU	2005/12/24	TFR HEADER W/DETECT PIN	CHECKED BY	DATE	YJWU	2005/12/24	MOLEX INCORPORATED	APPROVED BY	DATE	YJWU	2005/12/24	<table border="1"> <tr> <td>MATERIAL NO.</td> <td>DOCUMENT NO.</td> <td>SHEET NO.</td> </tr> <tr> <td>SEE TABLE</td> <td>SD-47309-001</td> <td>1 OF 2</td> </tr> </table>	MATERIAL NO.	DOCUMENT NO.	SHEET NO.	SEE TABLE	SD-47309-001	1 OF 2
DRAWN BY	DATE	TITLE																						
XIXU	2005/12/24	TFR HEADER W/DETECT PIN																						
CHECKED BY	DATE																							
YJWU	2005/12/24	MOLEX INCORPORATED																						
APPROVED BY	DATE																							
YJWU	2005/12/24	<table border="1"> <tr> <td>MATERIAL NO.</td> <td>DOCUMENT NO.</td> <td>SHEET NO.</td> </tr> <tr> <td>SEE TABLE</td> <td>SD-47309-001</td> <td>1 OF 2</td> </tr> </table>	MATERIAL NO.	DOCUMENT NO.	SHEET NO.	SEE TABLE	SD-47309-001	1 OF 2																
MATERIAL NO.	DOCUMENT NO.	SHEET NO.																						
SEE TABLE	SD-47309-001	1 OF 2																						
REV		SIZE	THIS DRAWING CONTAINS INFORMATION THAT IS PROPRIETARY TO MOLEX INCORPORATED AND SHOULD NOT BE USED WITHOUT WRITTEN PERMISSION																					

10 9 8 7 6 5 4 3 2 1



----- CONNECTOR PROFILE  
 ..... CARD PROFILE

TRF CARD

G4	DET
G3	POL
G2	GND
G1	GND
P8	DAT1
P7	DAT0
P6	VSS
P5	CLK
P4	VDD
P3	CMD
P2	CD/DAT3
P1	DAT2
PIN NUMBER	PIN NUMBER

RECOMMENDED PCB LAYOUT  
 TOLERANCE FOR PCB LAYOUT : ±0.05

NOTES:

NO CONDUCTIVE EXPOSURE TRACE IS ALLOWED ON THE SIDE FACE OF THE CARD AT THIS AREA.

9 8 7 6 5 4 3 2 1

<b>REVISION</b> EC NO: SH20080309399 DRW: LLIU10 2008/02/22 CHKD: YLZHU02 2008/03/11 APPR: HWANG 2008/04/02	<b>QUALITY SYMBOLS</b>  	<b>GENERAL TOLERANCES (UNLESS SPECIFIED)</b>		<b>DIMENSION STYLE</b> MM ONLY	<b>SCALE</b> 15:1	<b>DESIGN UNITS</b> METRIC	THIRD ANGLE PROJECTION		
		4 PLACES ± --- ± --- 3 PLACES ± --- ± --- 2 PLACES ± 0.15 ± --- 1 PLACE ± 0.25 ± ---	mm INCH ± --- ± --- ± 0.15 ± --- ± 0.25 ± ---	<b>DRAWN BY</b> XIXU	<b>DATE</b> 2005/12/24	<b>TFR HEADER W/DETECT PIN</b>			
		ANGULAR ± 1 °		<b>CHECKED BY</b> Y JWU	<b>DATE</b> 2005/12/24	<b>MOLEX INCORPORATED</b>			
		DRAFT WHERE APPLICABLE MUST REMAIN WITHIN DIMENSIONS		<b>APPROVED BY</b> Y JWU	<b>DATE</b> 2005/12/24	<b>MATERIAL NO.</b> SEE TABLE	<b>DOCUMENT NO.</b> SD-47309-001	<b>SHEET NO.</b> 2 OF 2	

THIS DRAWING CONTAINS INFORMATION THAT IS PROPRIETARY TO MOLEX INCORPORATED AND SHOULD NOT BE USED WITHOUT WRITTEN PERMISSION