

**Piston Rod Locking Units for  
Magnet and Non-magnet  
Piston Cylinders VDMA 24562 and  
NFE49-003-1**

- **Secure locking of piston rod in any position**
- **Active and passive locking models**
- **Compact, maintenance-free design**

**Technical Data**

Medium:

Compressed air, filtered, lubricated and non-lubricated

Models:

PRA/8000/L3 Active locking

PRA/8000/L4 Passive locking

Operation:

Active model – pressure applied to lock

Passive model – pressure applied to release

Operating Pressure:

4 - 10 bar

Operating Temperature:

0°C\* to +80°C

\* Consult our Technical Service for use below +2°C

Cylinder Diameters:

32, 40, 50, 63, 80, 100 mm

Materials:

Body – hard anodised diecast aluminium, polyurethane seals.

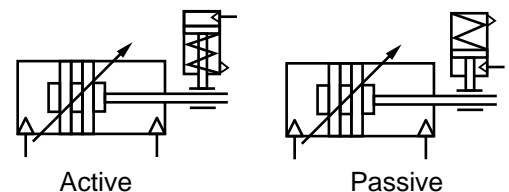
Cartridge – anodised aluminium body, hardened steel locking wedges, nitrile seals.

**Alternative Models:**

Non-magnetic


**Ordering Information**

To order a 40mm bore magnetic cylinder with a 200mm stroke and passive locking unit quote: PRA/8040/L4/200



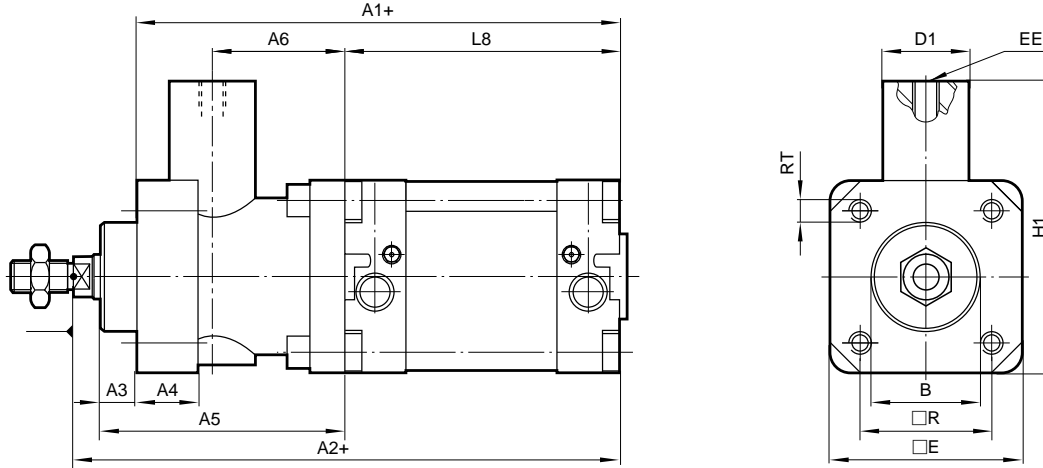


### Lock Retention Forces

Model	8032	8040	8050	8063	8080	8100
Retention force (N)	600	1000	1400	2000	5000	5000

Figures quoted are at 6 bar for Active and Spring forces for Passive units. Min. pressure to release Passive unit 3.5 bar.

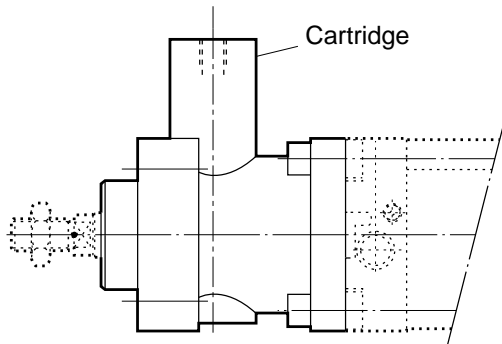
### Basic Dimensions



Model	8032	8040	8050	8063	8080	8100
Ø	32	40	50	63	80	100
Ø B <sub>e11</sub>	30	35	40	45	45	55
Ø D <sub>118</sub>	20	24	30	38	48	48
E	47	53	65	75	95	115
EE	M5	G1/8	G1/8	G1/8	G1/8	G1/8
H1	68,5	83,5	102,5	117,5	159,5	169,5
L8	94	105	106	121	128	138
A1	142	160	176	191	218	230
A2	158	178	196	211	251	268
A3	10	10	12	12	20	23
A4	13	13	16	16	20	20
A5	58	65	82	82	110	115
A6	31,5	36	45,5	49,5	61	65
R	32,5	38	46,5	56,5	72	89
RT	M6	M6	M8	M8	M10	M10
Weight per 0mm stroke (kg)	0,76	1,2	2,03	2,8	5,37	7,75

For full dimensions of the basic PRA cylinder see page 1.5.128.03.

### Locking unit (ordered separately)



For cylinder	Complete unit		Cartridge only	
	Active	Passive	Active	Passive
8032	QA/8032/58	QA/8032/59	QA/8032/62	QA/8032/63
8040	QA/8040/58	QA/8040/59	QA/8040/62	QA/8040/63
8050	QA/8050/58	QA/8050/59	QA/8050/62	QA/8050/63
8063	QA/8063/58	QA/8063/59	QA/8063/62	QA/8063/63
8080	QA/8080/58	QA/8080/59	QA/8100/62	QA/8100/63
8100	QA/8100/58	QA/8100/59	QA/8100/62	QA/8100/63

### Warning

These products are intended for use in industrial compressed air systems only. Do not use these products where pressures and temperatures can exceed those listed under 'Technical Data'.

Before using these products with fluids other than those specified, for non-industrial applications, life-support systems, or other applications not with published specifications, consult NORGREN.

Through misuse, age, or malfunction, components used in fluid power systems can fail in various modes.

The system designer is warned to consider the failure modes of all component parts used in fluid power systems and to provide adequate safeguards to prevent personal injury or damage to equipment in the event of such failure.

**System designers must provide a warning to end users in the system instructional manual if protection against a failure mode cannot be adequately provided.**

System designers and end users are cautioned to review specific warnings found in instruction sheets packed and shipped with these products.