

# New Product Announcement!

## Low Pass Filter

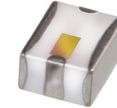
## LFCV-45+

50Ω

DC to 45 MHz

### The Big Deal:

- Small size 3.2mm x 2.5 mm
- High Power handling (8W)
- High rejection (50 dB typ)
- Ceramic construction



CASE STYLE: JV1210C

Pricing: **\$3.99** (QTY 10)

### Product Overview:

New Low Pass Filter LFCV-45+ is an LTCC based 7 section design, that extends the lower frequency cutoff range of the existing LFCN series to 45 MHz. Systems that previously relied on active or lumped element filtering to support these lower frequencies can save power and system complexity by integrating the LFCV-45+ into new designs. These filters are offered in a EIA 1210 package size and have a typical stop band rejection of 50 dB.

#### Summary Performance

Insertion Loss (Pass band)	1.2 dB Max.	45 MHz
Return Loss (Pass band)	20 dB Typ.	45 MHz
Stop band Rejection	20 dB Min.	120 MHz
Stop band Rejection	50 dB typ.	180 MHz

### Key Features

Feature	Advantages
Small Size (3.2mm x2.5 mm)	Available in the size of typical resistors or capacitors (EIA 1210), the ultra small LFCV series integrates up to 7 low pass sections in a simple SMT chip form factor.
High Power Handling	The LFCV series can withstand up to 8W CW signal without damage making this filter ideal for use in medium power to transmit paths.
Temperature Stability	Over a 155°C operating temperature range (-55°C to +100°C), the LFCV series ceramic filters typically exhibit less than 0.2 dB pass band insertion loss variation, and less than 0.4 dB rejection variation at the 20 dB point (as measured on a single unit)
High Rejection	Achieving 50dB rejection @ 180 MHz; the LFCV-45+ provides a versatile anti aliasing solution for high data rate receivers.

**Mini-Circuits®**

ISO 9001 ISO 14001 AS 9100 CERTIFIED

P.O. Box 350166, Brooklyn, New York 11235-0003 (718) 934-4500 Fax (718) 332-4661 The Design Engineers Search Engine Provides ACTUAL Data Instantly at [minicircuits.com](http://minicircuits.com)

IF/RF MICROWAVE COMPONENTS

For detailed performance specs & shopping online see web site

**Notes:** 1. Performance and quality attributes and conditions not expressly stated in this specification sheet are intended to be excluded and do not form a part of this specification sheet. 2. Electrical specifications and performance data contained herein are based on Mini-Circuit's applicable established test performance criteria and measurement instructions. 3. The parts covered by this specification sheet are subject to Mini-Circuits standard limited warranty and terms and conditions (collectively, "Standard Terms"); Purchasers of this part are entitled to the rights and benefits contained therein. For a full statement of the Standard Terms and the exclusive rights and remedies thereunder, please visit Mini-Circuits' website at [www.minicircuits.com/MCLStore/terms.jsp](http://www.minicircuits.com/MCLStore/terms.jsp).