

**PLEASE CHECK WWW.MOLEX.COM FOR LATEST PART INFORMATION**

**Part Number:** [0398801006](#)  
**Status:** **Active**  
**Description:** 5.08mm (.200") Pitch Beau™ Eurostyle™ High Profile, Three Level Terminal Block, Modular, 6 Circuits

**Documents:**

[3D Model](#)  
[Drawing \(PDF\)](#)

[RoHS Certificate of Compliance \(PDF\)](#)

**Agency Certification**

UL E48521

**General**

Product Family	Terminal Blocks
Series	<a href="#">39880</a>
Application	Wire-to-Board
Component Type	One Piece
Product Literature Order No	USA-263
Product Name	Eurostyle™ Multi-Level
Type	Euro Block

**Physical**

Circuits (Loaded)	6
Entry Angle	Horizontal
Flammability	94V-0
Lock to Mating Part	None
Number of Rows	3
Orientation	Vertical
PC Tail Length (in)	0.157 In
PC Tail Length (mm)	4.00 mm
PCB Retention	None
PCB Thickness Recommended (in)	0.093 In
PCB Thickness Recommended (mm)	2.40 mm
Panel Mount	No
Pitch - Mating Interface (in)	0.200 In
Pitch - Mating Interface (mm)	5.08 mm
Pitch - Term. Interface (in)	0.200 In
Pitch - Term. Interface (mm)	5.08 mm
Polarized to Mating Part	N/A
Shrouded	Fully
Stackable	Yes
Temperature Range - Operating	110°C
Wire Size AWG	12, 14, 16, 18, 20, 22, 24, 26, 28, 30
Wire Size mm²	0.05 - 2.50

**Electrical**

Current - Maximum per Contact	24A
Voltage - Maximum	300V

**Solder Process Data**

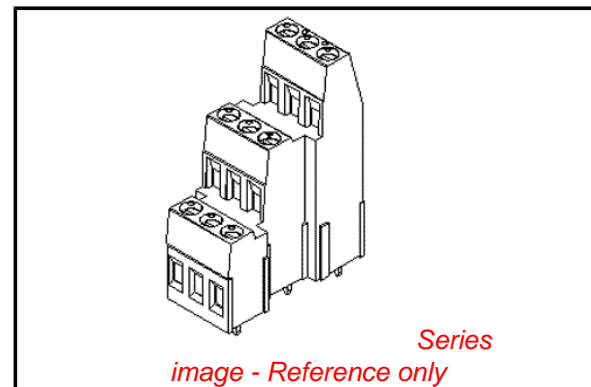
Lead-free Process Capability Wave Capable (TH only)

**Material Info**

Old Part Number 883406

**Reference - Drawing Numbers**

Sales Drawing SD-39880-007



**EU RoHS**

**ELV and RoHS  
Compliant**  
**REACH SVHC**  
 Not Reviewed  
**Halogen-Free  
Status**  
**Not Reviewed**

**China RoHS**



**Need more information on product  
environmental compliance?**

Email [productcompliance@molex.com](mailto:productcompliance@molex.com)  
 For a multiple part number RoHS Certificate of Compliance, [click here](#)

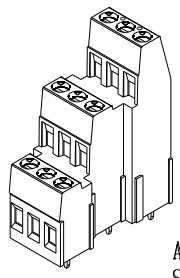
Please visit the [Contact Us](#) section for any non-product compliance questions.

**Search Parts in this Series**

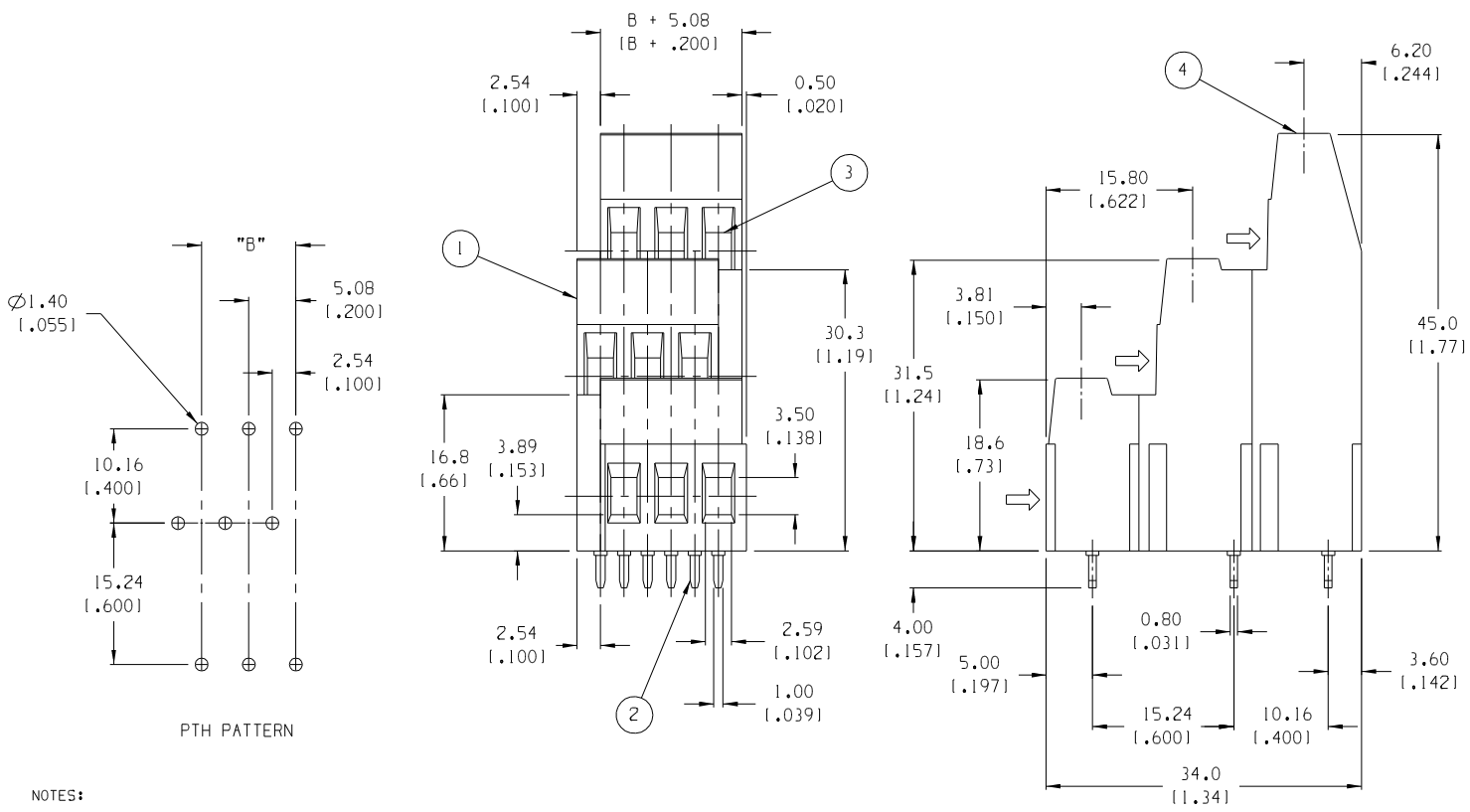
[39880Series](#)

This document was generated on 04/26/2010

**PLEASE CHECK [WWW.MOLEX.COM](http://WWW.MOLEX.COM) FOR LATEST PART INFORMATION**



AUX. VIEW  
SCALE 1:1  
9 CIRCUIT SHOWN



NO. OF CIRCUITS "XX"	DIM. "B"	MATERIAL NO.
06	5.08 (1.200)	39880-1006
09	10.16 (1.400)	39880-1009
12	15.24 (1.600)	39880-1012
15	20.32 (1.800)	39880-1015
18	25.40 (1.000)	39880-1018
21	30.48 (1.200)	39880-1021
24	35.56 (1.400)	39880-1024
27	40.64 (1.600)	39880-1027
30	45.72 (1.800)	39880-1030
33	50.80 (2.000)	39880-1033
36	55.88 (2.200)	39880-1036
39	60.96 (2.400)	39880-1039
42	66.04 (2.600)	39880-1042
45	71.12 (2.800)	39880-1045
48	76.20 (3.000)	39880-1048
51	81.28 (3.200)	39880-1051
54	86.36 (3.400)	39880-1054
57	91.44 (3.600)	39880-1057
60	96.52 (3.800)	39880-1060
63	101.60 (4.000)	39880-1063
66	106.68 (4.200)	39880-1066
69	111.76 (4.400)	39880-1069
72	116.84 (4.600)	39880-1072

- NOTES:
1. MATERIAL: SEE TABLE
  2. FINISHES: SEE TABLE
  3. PRODUCT SPECIFICATION: NOT REQUIRED
  4. PACKAGING: NOT REQUIRED
  5. MATES WITH: NONE
  6. "XX" REFERS TO THE QUANTITY OF CIRCUITS.

ITEM	QTY.	DESCRIPTION	MATERIAL	FINISH
4	XX	SCREW, M3	BRONZE	NICKEL PLATE
3	XX	RISEING CAGE CLAMP	BRASS	NICKEL PLATE
2	XX	TERMINAL	COPPER ALLOY	TIN PLATE
1	1	INSULATOR, THREE LEVEL	POLYAMIDE	BLACK

EC NO. RELEASED DRWN: CLY CHK: CLY APPR:	MAJOR CRITICAL SPC	QUALITY SYMBOLS	GENERAL TOLERANCES: (UNLESS SPECIFIED)	SCALE 2:1	DESIGN UNITS <input type="checkbox"/> mm <input checked="" type="checkbox"/> INCH	THIRD ANGLE PROJECTION	DRAWN BY & DATE C. YORK 12-02-04	TITLE: 5.08mm (1.200") HIGH PROFILE, THREE LEVEL TERM. BLOCK	
		4 PLACES ±.0015	3 PLACES ±.038 ±.005	2 PLACES ±.13 ±.01	1 PLACE ±.3	APPROVED BY & DATE	MATERIAL NO. SEE CHART	DRAWING NO. SD-39880-007	SHEET NO. 1 OF 1
		ANGULAR: ±2°	DRAFT WHERE APPLICABLE MUST REMAIN WITHIN DIMENSIONS		CAD FILENAME 8834XX	THIS DRAWING CONTAINS INFORMATION THAT IS PROPRIETARY TO MOLEX INCORPORATED AND SHOULD NOT BE USED WITHOUT WRITTEN PERMISSION.			
		REV	DESCRIPTION	PROJECT NO. - - - DIMENSIONS: <input checked="" type="checkbox"/> mm <input type="checkbox"/> INCH <input type="checkbox"/> mm ONLY <input type="checkbox"/> INCH ONLY SHT REV CAD ONLY					