

Am2148/Am2149

Am21L48/Am21L49

1024x4 Static RAM

DISTINCTIVE CHARACTERISTICS

- High speed — access times as fast as 35 ns
- Fully static storage and interface circuitry
- Automatic power-down when deselected (Am2148)
- TTL-compatible interface levels
- Low power dissipation
 - Am2148: 990 mW active, 165 mW power down
 - Am21L48: 688 mW active, 110 mW power down
- High output drive
 - Up to seven standard TTL loads

GENERAL DESCRIPTION

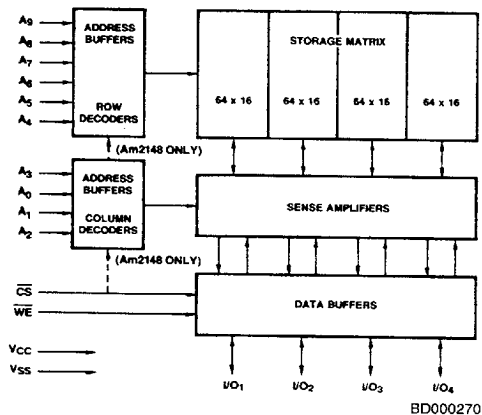
The Am2148 and Am2149 are high-performance, static, N-Channel, read/write, random-access memories, organized as 1024 x 4. Operation is from a single 5-V supply, and all input/output levels are identical to standard TTL specifications. The Am2148 and Am2149 are the same except that the Am2148 offers an automatic \overline{CS} power-down feature.

The Am2148 remains in a low-power standby mode as long as \overline{CS} remains HIGH, thus reducing its power requirements.

The Am2148 power decreases from 990 mW to 165 mW in the standby mode. The \overline{CS} input does not affect the power dissipation of the Am2149.

Data readout is not destructive and has the same polarity as data input. \overline{CS} provides for easy selection of an individual package when the outputs are OR-tied.

BLOCK DIAGRAM



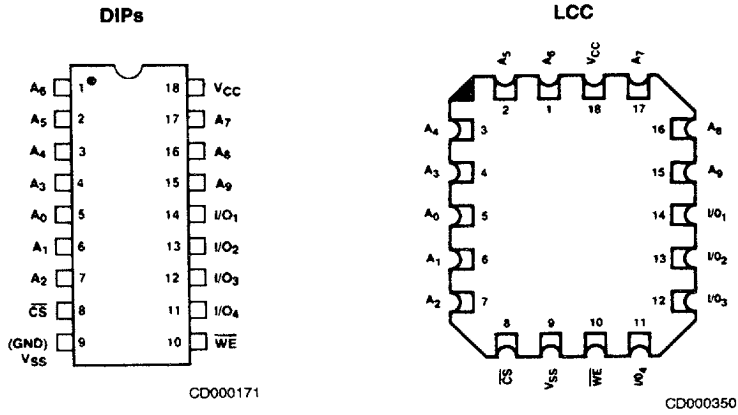
PRODUCT SELECTOR GUIDE

Part Number	Am2148/9 -35	Am2148/9 -45	Am21L48/9 -45	Am2148/9 -55	Am21L48/9 -55	Am2148/9 -70	Am21L48/9 -70
Maximum Access Time (ns)	35	45	45	55	55	70	70
I_{CC} Max. (mA)	0 to +70°C		125	180	125	180	125
I_{SB}^* Max. (mA)	0 to +70°C		20	30	20	30	20
I_{CC} Max. (mA)	-55 to +125°C		N/A	180	N/A	180	N/A
I_{SB}^* Max. (mA)	-55 to +125°C		N/A	30	N/A	30	N/A

*Am2148 and Am21L48 only.

8077984 0000036 347

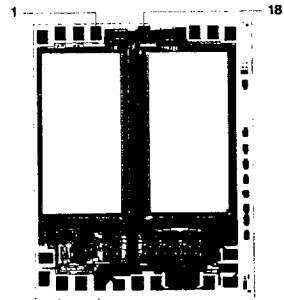
CONNECTION DIAGRAMS Top View



Note: Pin 1 is marked for orientation.

METALLIZATION AND PAD LAYOUT

Address Designators	
External	Internal
A ₀	A ₇
A ₁	A ₈
A ₂	A ₉
A ₃	A ₆
A ₄	A ₅
A ₅	A ₄
A ₆	A ₃
A ₇	A ₂
A ₈	A ₁
A ₉	A ₀



Die Size: 0.107" x 0.145"

4

8077984 0000037 283

Am2148/Am2149/Am21L48/Am21L49

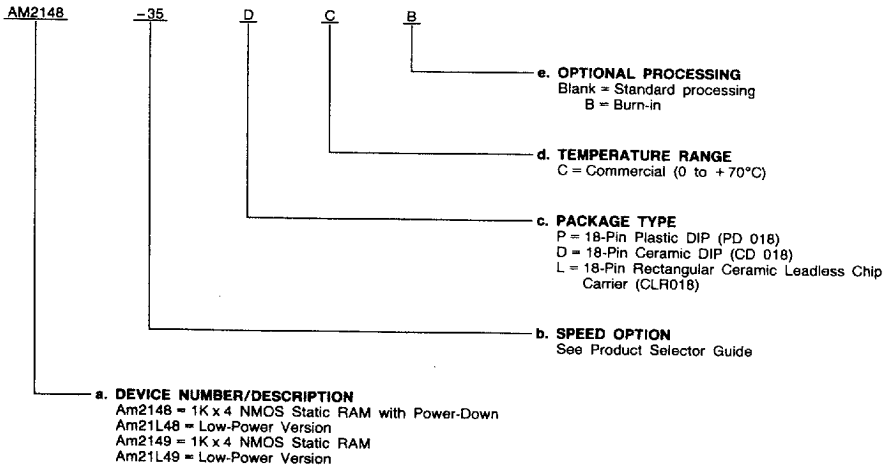
4-45

ORDERING INFORMATION

Standard Products

AMD standard products are available in several packages and operating ranges. The order number (Valid Combination) is formed by a combination of:

- a. **Device Number**
- b. **Speed Option** (if applicable)
- c. **Package Type**
- d. **Temperature Range**
- e. **Optional Processing**



Valid Combinations	
AM2148-35	PC, PCB, DC, DCB, LC, LCB
AM2149-35	
AM21L48-45	
AM21L49-45	
AM21L48-55	
AM21L49-55	
AM21L48-70	PC, PCB, DC, DCB, LC, LCB
AM21L49-70	
AM2148-45	
AM2149-45	
AM2148-55	
AM2149-55	
AM2148-70	
AM2149-70	

Valid Combinations

Valid Combinations list configurations planned to be supported in volume for this device. Consult MSIS sales department to confirm availability of specific valid combinations, and to obtain additional data on MSIS's standard military grade products.

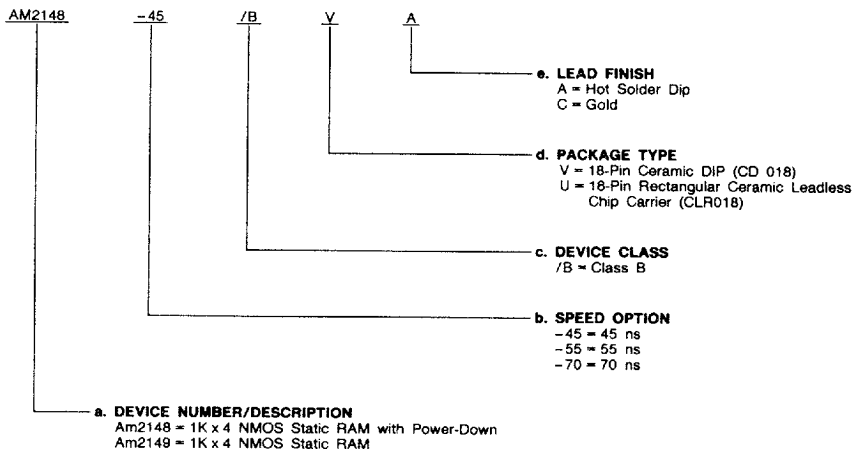
8077984 0000038 11T

MILITARY ORDERING INFORMATION

APL Products

AMD products for Aerospace and Defense applications are available in several packages and operating ranges. APL (Approved Products List) products are fully compliant with MIL-STD-883C requirements. The order number (Valid Combination) is formed by a combination of:

- a. **Device Number**
- b. **Speed Option** (if applicable)
- c. **Device Class**
- d. **Package Type**
- e. **Lead Finish**



Valid Combinations	
AM2148-45	/BVA
AM2149-45	
AM2148-55	
AM2149-55	
AM2148-70	
AM2149-70	/BUC
AM2148-45	
AM2149-45	
AM2148-55	
AM2149-55	
AM2148-70	
AM2149-70	

Valid Combinations

Valid Combinations list configurations planned to be supported in volume for this device. Consult MSIS sales department to confirm availability of specific valid combinations, and to obtain additional data on MSIS's standard military grade products.

Group A Tests

Group A Tests consist of Subgroups
 1, 2, 3, 7, 8, 9, 10, 11.

PIN DESCRIPTION

A₀ - A₉ Address Inputs

The address input lines select the RAM location to be read or written.

CS Chip Select (Input, Active LOW)

The Chip Select selects the memory device.

WE Write Enable (Input, Active LOW)

When WE is LOW and CS is also LOW, data is written into the location specified on the address pins.

I/O₁ - I/O₄ Data In/Out Bus (Bidirectional, Active HIGH)

These I/O lines provide the path for data to be read from or written to the selected memory location.

VCC Power Supply

VSS Ground

8077984 0000039 056

Am2148/Am2149/Am21L48/Am21L49

4-47

ABSOLUTE MAXIMUM RATINGS

Storage Temperature	-65 to +150°C
Ambient Temperature with Power Applied	-55 to +125°C
Supply Voltage	-0.5 V to +7.0 V
Signal Voltages with Respect to Ground	-3.5 V to +7.0 V
Power Dissipation	1.2 W
DC Output Current	20 mA

Stresses above those listed under ABSOLUTE MAXIMUM RATINGS may cause permanent device failure. Functionality at or above these limits is not implied. Exposure to absolute maximum ratings for extended periods may affect device reliability.

Absolute Maximum Ratings are for system-design reference; parameters given are not 100% tested.

OPERATING RANGES

Commercial (C) Devices	Ambient Temperature (T _A)	0 to +70°C
	Supply Voltage (V _{CC})	+4.5 V to +5.5 V
Military (M) Devices	Ambient Temperature (T _A *)	-55 to +125°C
	Supply Voltage (V _{CC})	+4.5 V to +5.5 V

Operating ranges define those limits between which the functionality of the device is guaranteed.

*T_A is defined as the "instant on" case temperature.

DC CHARACTERISTICS over operating ranges unless otherwise specified (for APL Products, Group A, Subgroups 1, 2, 3 are tested unless otherwise noted)

Parameter Symbol	Parameter Description	Test Conditions	Standard		Low Power		Unit
			Min.	Max.	Min.	Max.	
I _{OH}	Output HIGH Current	V _{OH} = 2.4 V	V _{CC} = 4.5 V		-4	-4	mA
I _{OL}	Output LOW Current	V _{OL} = 0.4 V	T _A = 70°C		8	8	mA
			T _A = 125°C		8	N/A	
V _{IH}	Input HIGH Voltage		2.0	6.0	2.0	6.0	V
V _{IL}	Input LOW Voltage		-0.5	0.8	-0.5	0.8	V
I _I	Input Load Current	V _{SS} ≤ V _I ≤ V _{CC}	-10	10	10	10	μA
I _{OZ}	Output Leakage Current	GND ≤ V _O ≤ V _{CC} Output Disabled	T _A = -55 to +125°C		-50	50	μA
C _I	Input Capacitance	Test Frequency = 1.0 MHz T _A = 25°C, All Pins at 0 V, V _{CC} = 5 V (Note 12)			5	5	pF
C _{I/O}	Input/Output Capacitance				7	7	
I _{CC}	V _{CC} Operating Supply Current	Max. V _{CC} , $\overline{CS} \leq V_{IL}$ Output Open	T _A = 0 to +70°C		180	125	mA
			T _A = -55 to +125°C		180	N/A	
I _{SB}	Automatic \overline{CS} Power Down Current	Max. V _{CC} , ($\overline{CS} \geq V_{IH}$)	T _A = 0 to +70°C		30	20	mA
			T _A = -55 to +125°C		30	N/A	
I _{PO}	Peak Power-On Current	Max. V _{CC} , ($\overline{CS} \geq V_{IH}$) (Notes 3 & 8)	T _A = 0 to +70°C		50	30	mA
			T _A = -55 to +125°C		50	N/A	
I _{OS}	Output Short-Circuit Current	GND ≤ V _O ≤ V _{CC} (Notes 11, 12)	T _A = 0 to +70°C		±275	±275	mA
			T _A = -55 to +125°C		±350	±350	

- Notes:
- Test conditions assume signal transition times of 10 ns or less, timing reference levels of 1.5 V, input pulse levels of 0 to 3.0 V and output loading of the specified I_{OL}/I_{OH} and 30 pF load capacitance. Output timing reference is 1.5 V.
 - The internal write time of the memory is defined by the overlap of \overline{CS} LOW and \overline{WE} LOW. Both signals must be LOW to initiate a write and either signal can terminate a write by going HIGH. The data input setup and hold timing should be referenced to the rising edge of the signal that terminates the write.
 - A pullup resistor to V_{CC} on the \overline{CS} input is required to keep the device deselected during V_{CC} power up. Otherwise I_{PO} will exceed values given (Am2148 only).
 - The operating ambient temperature is defined as the "instant-ON" case temperature.
 - Chip deselected greater than 55 ns prior to selection.
 - Chip deselected less than 55 ns prior to selection.
 - Transition is measured ±500 mV from steady state voltage with specified loading in Figure B. These parameters are sampled and not 100% tested.
 - \overline{WE} is HIGH for read cycle.
 - Device is continuously selected, $\overline{CS} = V_{IL}$.
 - Address valid prior to or coincident with \overline{CS} transition LOW.
 - For test purposes, not more than one output at a time should be shorted. Short circuit test duration should not exceed 30 seconds.
 - This parameter is sampled and not 100% tested, but guaranteed by characterization.

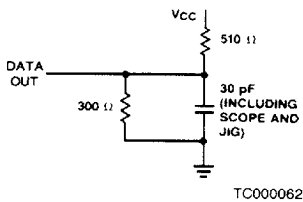
8077984 0000040 878

SWITCHING CHARACTERISTICS over operating range unless otherwise specified (Note 1) (for APL Products, Group A, Subgroups 9, 10, 11 are tested unless otherwise noted)

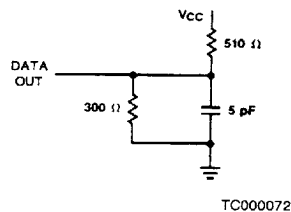
No.	Parameter Symbol	Parameter Description	Am2148/9-35		Am2148/9-45 Am21L48/9-45		Am2148/9-55 Am21L48/9-55		Am2148/9-70 Am21L48/9-70		Unit
			Min.	Max.	Min.	Max.	Min.	Max.	Min.	Max.	
			Read Cycle								
1	t_{RC}	Address Valid to Address Do Not Care Time (Read Cycle Time)	35		45		55		70		ns
2	t_{AA}	Address Valid to Data Out Valid Delay (Address Access Time)		35		45		55		70	ns
3	t_{ACS1}	Chip Select LOW to Data Out Valid (Am2148 only)				35		45		55	ns
4	t_{ACS2}	Chip Select LOW to Data Out Valid (Am2149 only)				45		55		65	ns
5	t_{ACS}	Chip Select LOW to Data Out Valid (Am2149 only)		15		20		25		30	ns
6	t_{LZ}	Chip Select LOW to Data Out On (Notes 7 & 12)									ns
		Am2148	10		10		10		10		
		Am2149	5		5		5		5		
7	t_{HZ}	Chip Select HIGH to Data Out Off (Notes 7 & 12)	0	20	0	20	0	20	0	20	ns
8	t_{OH}	Output hold after address change	5		5		5		5		ns
9	t_{PD}	Chip Select HIGH to Power Down Delay (Note 12)		30		30		30		30	ns
10	t_{PU}	Chip Select LOW to Power Up Delay (Note 12)		0		0		0		0	ns
Write Cycle											
11	t_{WC}	Address Valid to Address Do Not Care (Write Cycle Time)	35		45		55		70		ns
12	t_{WP}	Write Enable LOW to Write Enable HIGH (Note 2)	30		35		40		50		ns
13	t_{WR}	Write Enable HIGH to Address	5		5		5		5		ns
14	t_{WZ}	Write Enable LOW to Output in High Z (Notes 7 & 12)	0	10	0	15	0	20	0	25	ns
15	t_{DW}	Data in Valid to Write Enable HIGH	20		20		20		25		ns
16	t_{DH}	Data Hold Time	0	0	0	0	0	0	0	0	ns
17	t_{AS}	Address Valid to Write Enable LOW	0		0		0		0		ns
18	t_{CW}	Chip Select LOW to Write Enable HIGH (Note 2)	30		40		50		65		ns
19	t_{OW}	Write Enable HIGH to Output in Low Z (Notes 7 & 12)	0		0		0		0		ns
20	t_{AW}	Address Valid to End of Write	30		40		50		65		ns

Notes: See notes following DC Characteristics table.

SWITCHING TEST CIRCUITS



A. Output Load







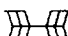
**B. Output Load
for t_{HZ} , t_{LZ} , t_{OW} , t_{WZ}**

8077984 0000041 704

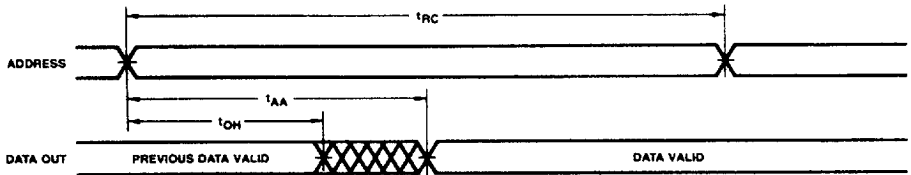
4

SWITCHING WAVEFORMS

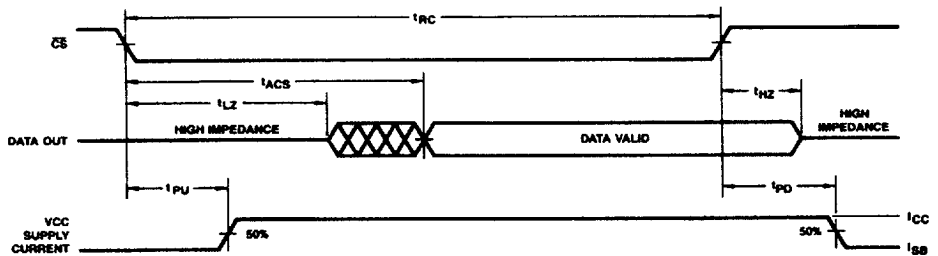
KEY TO SWITCHING WAVEFORMS

WAVEFORM	INPUTS	OUTPUTS
	MUST BE STEADY	WILL BE STEADY
	MAY CHANGE FROM H TO L	WILL BE CHANGING FROM H TO L
	MAY CHANGE FROM L TO H	WILL BE CHANGING FROM L TO H
	DON'T CARE, ANY CHANGE PERMITTED	CHANGING: STATE UNKNOWN
	DOES NOT APPLY	CENTER LINE IS HIGH IMPEDANCE "OFF" STATE

KS000010



Read Cycle No. 1 (Notes 8, 9)

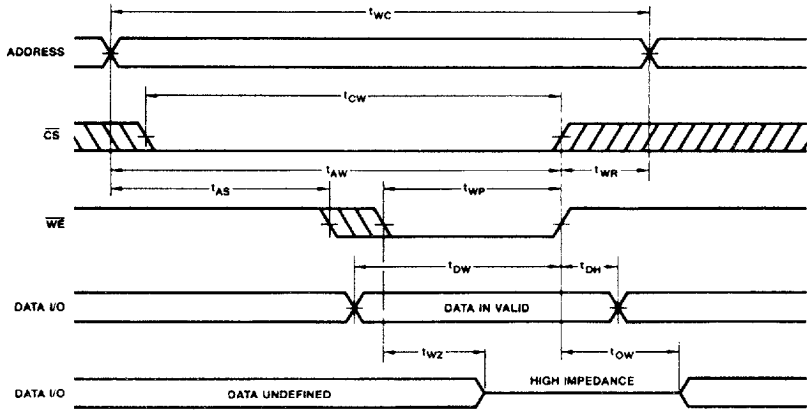


Read Cycle No. 2 (Notes 8, 10)

Notes: See notes following DC Characteristics table.

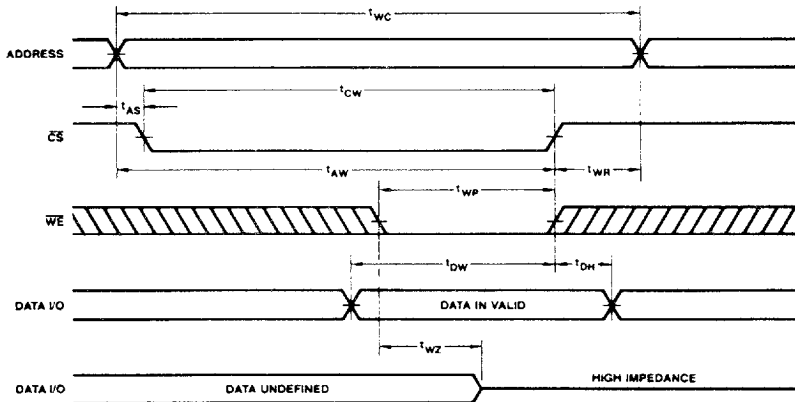
8077984 0000042 640

SWITCHING WAVEFORMS (Cont'd.)



WF000711

Write Cycle No. 1 (\overline{WE} Controlled)



WF000721

Write Cycle No. 2 (\overline{CS} Controlled)

Note: If \overline{CS} goes HIGH simultaneously with \overline{WE} HIGH, the output remains in a high-impedance state.

4

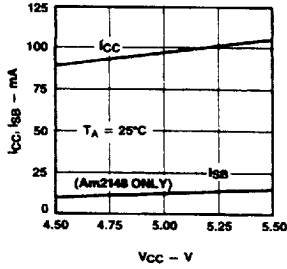
8077984 0000043 587

Am2148/Am2149/Am21L43/Am21L49

4-51

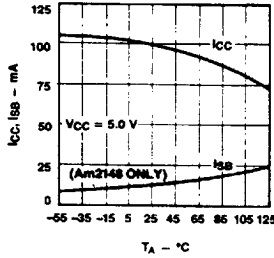
TYPICAL PERFORMANCE CURVES

**Supply Current
Versus Supply Voltage**



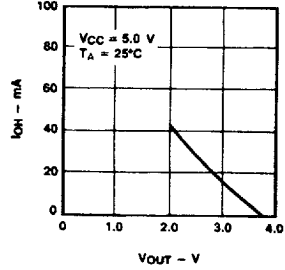
OP000730

**Supply Current
Versus Ambient Temperature**



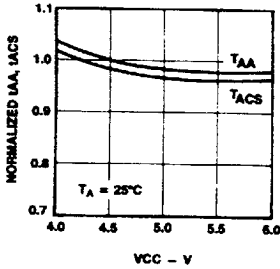
OP000741

**Output Source Current
Versus Output Voltage**



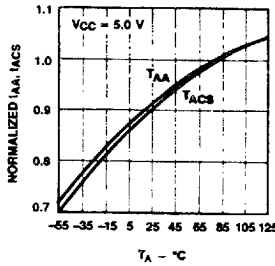
OP001081

**Normalized Access Time
Versus Supply Voltage**



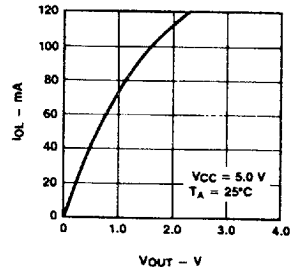
OP000761

**Normalized Access Time
Versus Ambient Temperature**



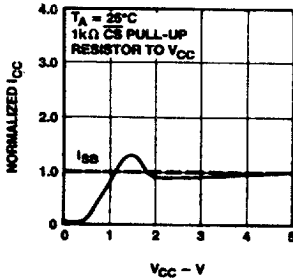
OP000771

**Output Sink Current
Versus Output Voltage**



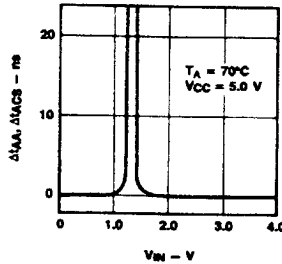
OP001091

**Typical Power-On Current
Versus Power Supply**



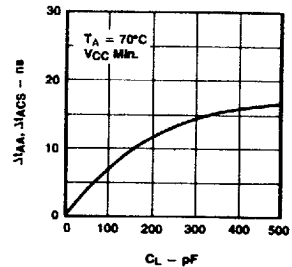
OP000791

**Access Time Change
Versus Input Voltage**



OP000801

**Access Time Change
Versus Output Loading**



OP001101

■ 8077984 0000044 413 ■