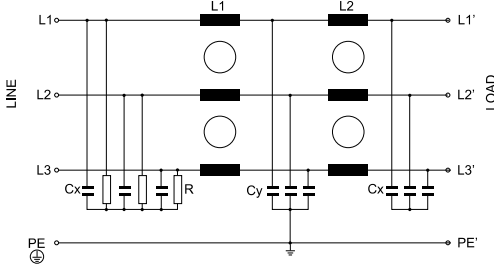


# FVDT-D

## Three Phase Double Stage

www.DataSheet4U.com

### Electrical schematics



### General Specifications

Maximum operating voltage: 520Vac.

Operating frequency: DC - 60Hz.

Hipot test voltage: L/N->PE: 3000Vdc 2s.

Li->Lj: 2250 Vdc 2s.

Application class: HPF Acc. TO DIN 40040

(-25°C/+85°C/95% RH, 30d).

Flammability class: UL 94 V2.

### Three phase double stage

Double stage three phase filter.

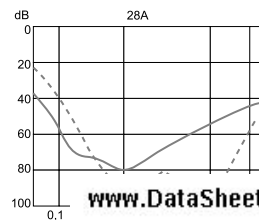
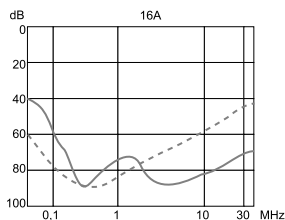
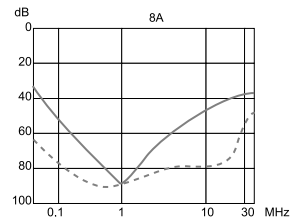
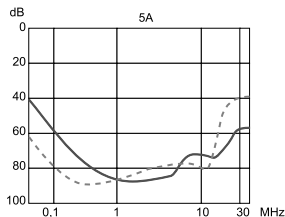
Low leakage current.

### Product List

| TYPE       | I@50°C | L      | CX   | CY    | R/R' | HOUSING | Max. Ifug mA IEC 950 | Max. Ifug mA 400V 50Hz | CONNECTION                    | WEIGHT ±g |
|------------|--------|--------|------|-------|------|---------|----------------------|------------------------|-------------------------------|-----------|
| FVDT-005DB | 5 Amp  | 10 mH  | 1 µF | 15 nF | 1 MΩ | 305     | 3,2 mA               | 0,28 mA                | 4mm <sup>2</sup>              | 700       |
| FVDT-005DX |        |        |      |       |      | 306     |                      |                        | 4mm <sup>2</sup> + AWG18 WIRE | 700       |
| FVDT-008DB | 8 Amp  | 5,8 mH | 1 µF | 15 nF | 1 MΩ | 305     | 3,2 mA               | 0,28 mA                | 4mm <sup>2</sup>              | 700       |
| FVDT-008DX |        |        |      |       |      | 306     |                      |                        | 4mm <sup>2</sup> + AWG18 WIRE | 700       |
| FVDT-016DB | 16 Amp | 3,7 mH | 1 µF | 15 nF | 1 MΩ | 303     | 3,2 mA               | 0,28 mA                | 4mm <sup>2</sup>              | 1000      |
| FVDT-016DX |        |        |      |       |      | 304     |                      |                        | 4mm <sup>2</sup> + AWG11 WIRE | 1000      |
| FVDT-028DB | 28 Amp | 2,9 mH | 1 µF | 15 nF | 1 MΩ | 303     | 3,2 mA               | 0,28 mA                | 6mm <sup>2</sup>              | 1900      |
| FVDT-028DX |        |        |      |       |      | 304     |                      |                        | 6mm <sup>2</sup> + AWG9 WIRE  | 1900      |

### Insertion Loss

--- ASYM  
— SYM



www.DataSheet4U.com