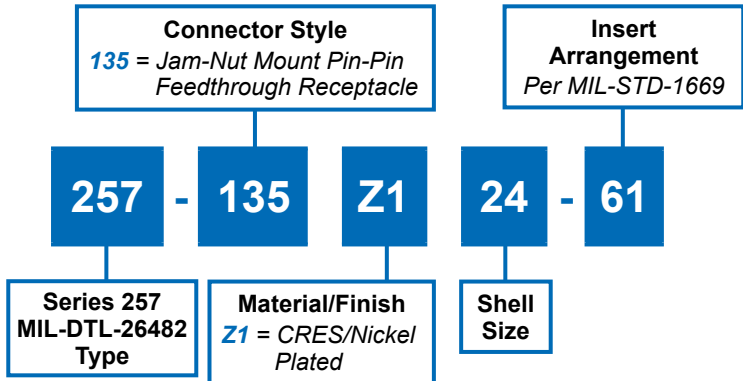
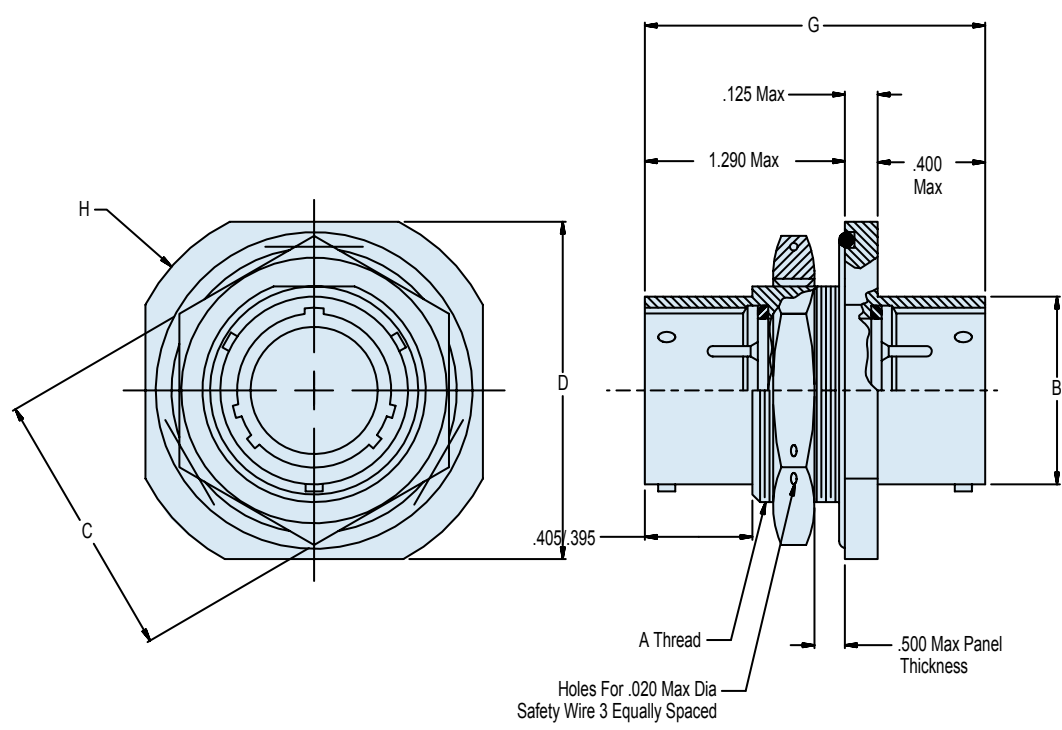


257-135
MIL-DTL-26482 Series II Type Hermetic
Bayonet Coupling Jam Nut Mount
Pin-Pin Bulkhead Feedthrough Receptacle



D



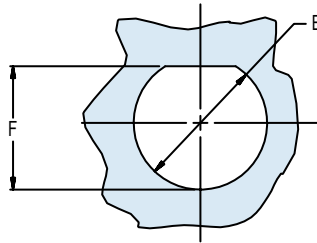
APPLICATION NOTES

- To be identified with manufacturer's name, part number and date code, space permitting.
- Electrical safety limits must be established by the user. Peak voltage, switching surge, transient, etc. should be used to determine the safety of the application.
- Metric Dimensions (mm) are indicated in parentheses.
- Material/Finish:**
 Shell and jam-nut: Z1 - CRES/nickel plated.
 Titanium and Inconel® available. Consult factory.
 Contacts - Alloy 52/gold plate.
 Bayonets - CRES/passivated.
 Seals - Fluorosilicone/N.A.
 Spacer - High grade rigid dielectric/N.A.

257-135
**MIL-DTL-26482 Series II Type Hermetic
 Bayonet Coupling Jam Nut Mount
 Pin-Pin Bulkhead Feedthrough Receptacle**



MIL-DTL
 26482 Type



RECOMMENDED PANEL CUT-OUT

HERMETIC LEAK RATE MOD CODES	
Designator	Required Leak Rate
-585A	1 x 10 ⁻¹⁰ cc's Helium per second
-585B	1 x 10 ⁻⁹ cc's Helium per second
-585C	1 x 10 ⁻⁸ cc's Helium per second

D

TABLE I: CONNECTOR AND CUT-OUT DIMENSIONS (Continued Below)								
Shell Size	A Thread Class 2A	B Dia Max	C Hex	D Flats	E Dia +.010 -.005 (+.03 -.01)	F Dia +.010 -.005 (+.03 -.01)	G Max	H Dia ± .016 (0.4)
8	9/16-24 UNEF	.474 (12.0)	.750 (19.1)	.938 (23.8)	.572 (14.5)	.540 (13.7)	2.125 (54.0)	1.062 (27.0)
10	11/16-24 UNEF	.591 (15.0)	.875 (22.2)	1.062 (27.0)	.697 (17.7)	.665 (16.9)	2.125 (54.0)	1.187 (30.1)
12	7/8-20 UNEF	.751 (19.1)	1.062 (27.0)	1.250 (31.8)	.895 (22.7)	.828 (21.0)	2.125 (54.0)	1.375 (34.9)
14	1-20 UNEF	.876 (22.3)	1.188 (30.2)	1.375 (34.9)	1.010 (25.7)	.952 (24.2)	2.125 (54.0)	1.500 (38.1)
16	1 1/8-18 UNEF	1.001 (25.4)	1.312 (33.3)	1.500 (38.1)	1.135 (28.8)	1.076 (27.3)	2.125 (54.0)	1.625 (41.3)
18	1 1/4-18 UNEF	1.126 (28.6)	1.438 (37.0)	1.625 (41.3)	1.260 (32.0)	1.201 (30.5)	2.125 (54.0)	1.750 (44.5)
20	1 3/8-18 UNEF	1.251 (31.8)	1.562 (39.7)	1.812 (46.0)	1.385 (35.2)	1.326 (33.7)	2.125 (54.0)	1.938 (49.2)
22	1 1/2-18 UNEF	1.376 (35.0)	1.688 (42.9)	1.938 (49.2)	1.510 (38.0)	1.451 (36.9)	2.125 (54.0)	2.062 (52.4)
24	1 5/8-18 UNEF	1.501 (38.1)	1.812 (46.0)	2.062 (52.4)	1.635 (41.5)	1.576 (40.0)	2.125 (54.0)	2.187 (55.5)