

Case Size: See Page 12

2.5 to 6 Watt Single Output

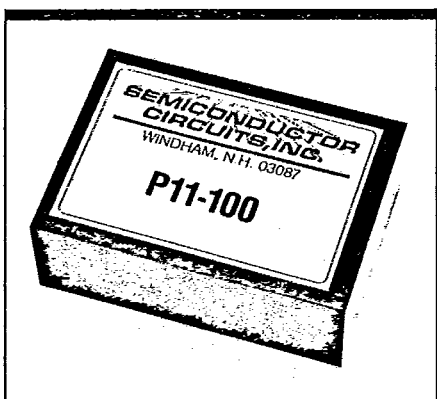
CM, P, PA Series

T-57-05

- 110/220 V inputs, 50 to 440 Hz
- Continuous short circuit protection
- Ultra low noise
- Tight Regulation

Output Voltage	Output Current	Pin Spacing Inches (mm)	Regulation %		Case	Model Number
			Line ±	Load ±		
5 VDC	500 mA	2.0 (51)	0.05	0.05	9A	P11-050
		2.2 (56)			9A	PA11-050
	1.0 A	2.0 (51)	0.05	0.1	9B	P11-100
		2.2 (56)			9B	PA11-100
12 VDC	500 mA	2.0 (51)	0.05	0.1	8C	CM11-100
					9B	P12-050
					8C	CM12-050

Optional inputs available: 90 - 110 VAC, - Add Suffix N
 210 - 250 VAC, 50 to 60 Hz - Add Suffix K
 105-125/210-250 VAC, 50 to 60 Hz - Add Suffix K2



Case Size: See Page 12

2.5 to 6 Watt Dual Output

CM, ED, P, PA Series

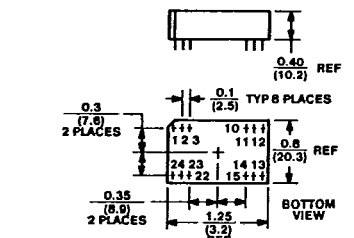
- 110/220 V inputs, 50 to 440 Hz
- Continuous short circuit protection
- Ultra low noise
- Tight Regulation

Output Voltage	Output Current	Pin Spacing Inches (mm)	Regulation %		Case	Model Number
			Line ±	Load ±		
±5 VDC	±500 mA	2.0 (51)	0.05	0.1	9B	P21-100
		2.2 (56)	0.05	0.1	9B	PA21-100
±12 VDC	±100 mA	2.0 (51)	0.05	0.1	9A	P22-020
		2.2 (56)	0.05	0.1	9B	PA22-020
	±200 mA	2.0 (51)	0.05	0.1	9B	P22-040
		2.2 (56)	0.05	0.1	9B	PA22-040
			0.05	0.1	8C	CM22-040
	±300 mA	2.0 (51)	0.05	0.1	9C	P22-060
		2.2 (56)	0.05	0.1	9C	PA22-060
			0.05	0.1	8D	CM22-060
±15 VDC	±100 mA	2.0 (51)	0.05	0.1	9A	P23-020
		2.2 (56)	0.05	0.1	9A	PA23-020
	±200 mA	2.0 (51)	0.05	0.1	9B	P23-040
		2.2 (56)	0.05	0.1	9B	PA23-040
			0.05	0.1	8C	CM23-040
	±300 mA	2.0 (51)	0.05	0.1	9C	P23-060
2.2 (56)		0.05	0.1	9C	PA23-060	
		0.05	0.1	8D	CM23-060	
180 VDC	30 mA	2.0 (51)	0.05	0.1	9B	ED16-003

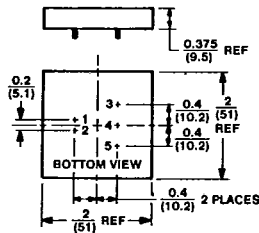
Optional inputs available: 90 - 110 VAC, - Add Suffix N
 210 - 250 VAC, 50 to 60 Hz - Add Suffix K
 105-125/210-250 VAC, 50 to 60 Hz - Add Suffix K2

Case Dimensions

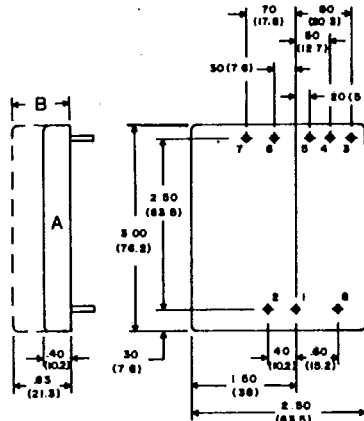
T-90-20



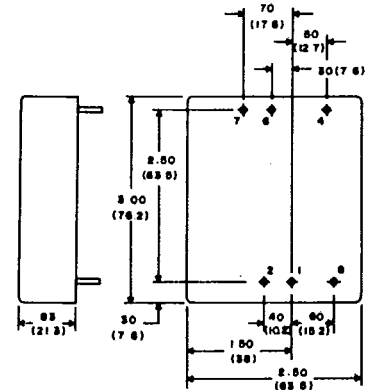
Case 1



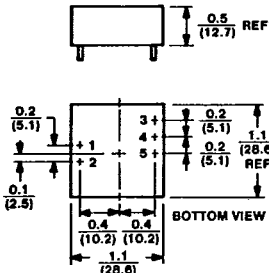
Case 6



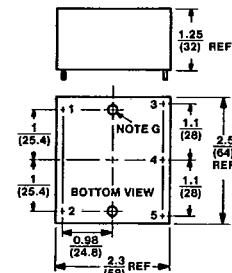
Case 10



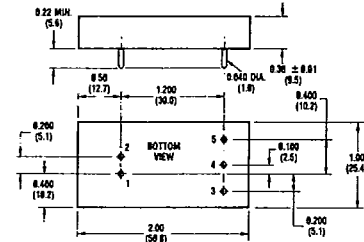
Case 13



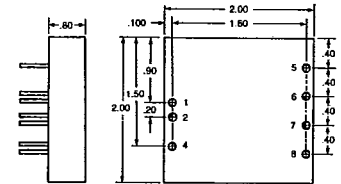
Case 2



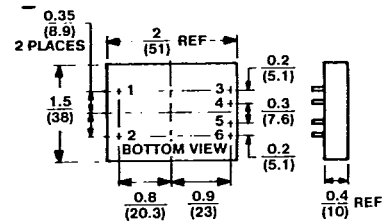
Case 7



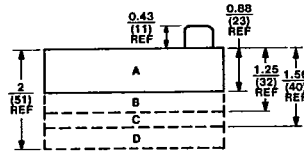
Case 11-1



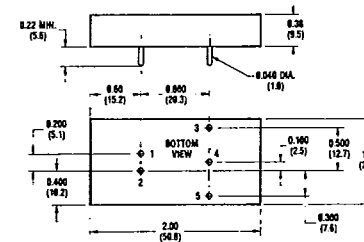
Case 14



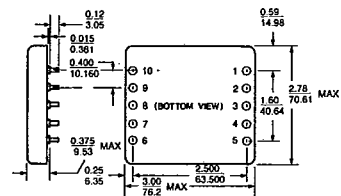
Case 3



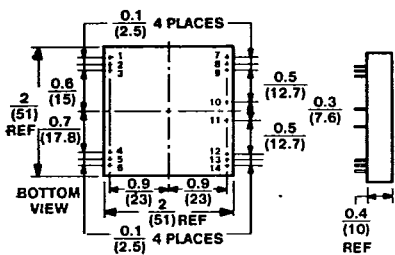
Case 8



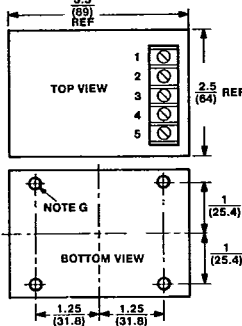
Case 11-2



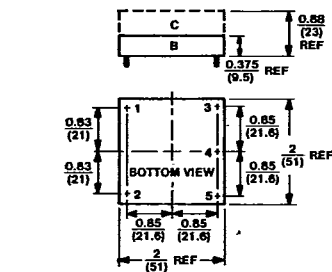
Case 15



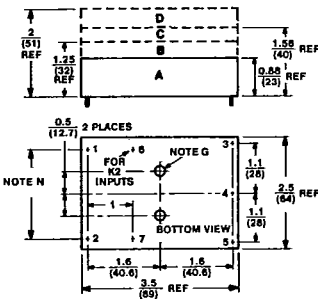
Case 4



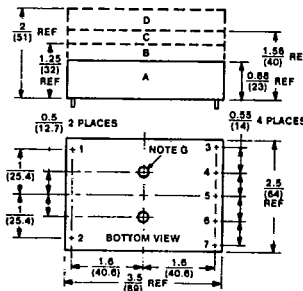
Case 8



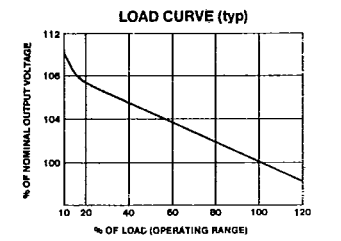
Case 5



Case 9



Case 12



12