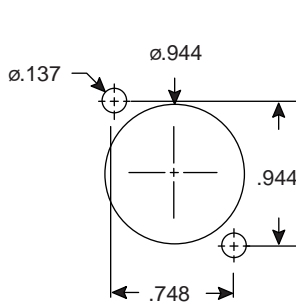
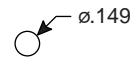


Dimensions (In.)



Panel Cut-out



Optional Color Coded Button

- 174-7280(Black)
- 174-7281(Brown)
- 174-7282(Red)
- 174-7283(Orange)
- 174-7284(Yellow)
- 174-7285(Green)
- 174-7286(Blue)
- 174-7287(Violet)
- 174-7288(Gray)
- 174-7289(White)

Specifications:

- Type: universal panel mount, female, latching
- Housing material (see chart): zinc high-pressure diecasting
- Contacts material: silver (3 microns) or gold (0.5 microns) plated brass
- Earth tag: spring steel, nickel plate 3 microns silver plate
- Contact base: valox DR48 UL 94V-0
- Operating temp: -30°C ~ +80°C
- Insertion force: < 20N
- Withdrawal force: < 10N
- Minimum number of insertions: 10,000
- Voltage rating: 250VAC
- Test voltage: 1500VAC.
- Contact resistance: < 3mΩ
- Insulation resistance: > 1GΩ

Mouser Stock No.	No. of Pins	Contact Plating	Housing Material	Rated Current	Wire Size (max)	Capacitance (pf)
164-7163	3	silver	nickel	16A	12AWG	< 4
164-7164	4	silver	nickel	10A	4-16AWG	< 7
164-7165	5	silver	nickel	5-7.5A	5-18AWG	< 7
164-7183	3	silver	black	16A	12AWG	< 4
164-7184	4	silver	black	10A	4-16AWG	< 7
164-7185	5	silver	black	5-7.5A	5-18AWG	< 7
164-72203	3	gold	nickel	16A	12AWG	< 4
164-72204	4	gold	nickel	10A	4-16AWG	< 7
164-72205	5	gold	nickel	5-7.5A	5-18AWG	< 7
164-72403	3	gold	black	16A	12AWG	< 4
164-72404	4	gold	black	10A	4-16AWG	< 7
164-72405	5	gold	black	5-7.5A	5-18AWG	< 7