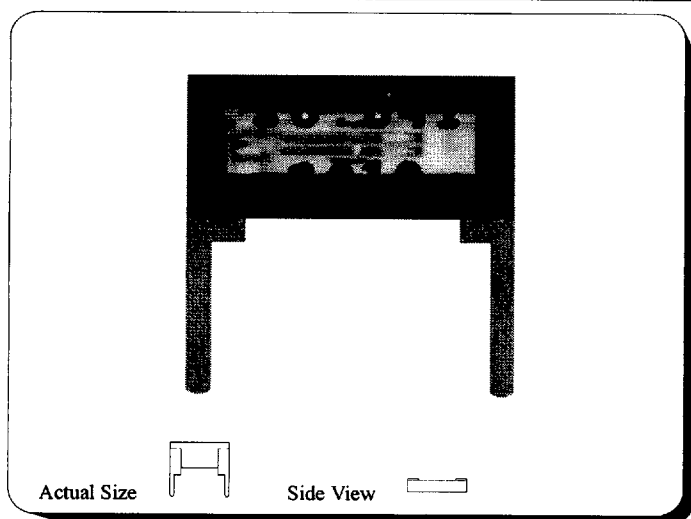




CX-1H CRYSTAL 10 kHz to 600 kHz

MINIATURE QUARTZ CRYSTAL FOR SERIES OSCILLATORS



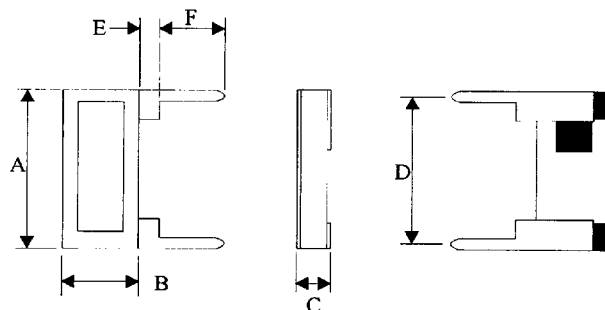
DESCRIPTION

The CX-1H quartz crystal is a high quality tuning fork resonator for use in series (two cascaded inverters) oscillators. The CX-1H is hermetically sealed in a rugged, miniature ceramic package, one-fourth the size of an eight-pin mini-DIP. The CX-1H crystal is manufactured using the Statek-developed photolithographic process, and was designed utilizing the experience acquired by producing millions of crystals for industrial, commercial and military applications.

FEATURES

- ☐ Miniature tuning fork design
- ☐ High shock resistance
- ☐ Designed for low power applications
- ☐ Compatible with hybrid or PC board packaging
- ☐ Low aging
- ☐ Full military testing available
- ☐ Designed and manufactured in the USA

PACKAGE DIMENSIONS



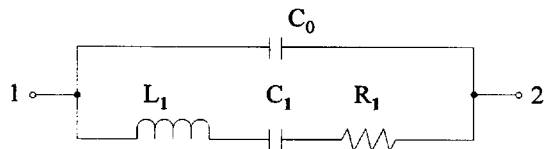
TYP.

MAX.

DIM	INCHES	mm	INCHES	mm
A	.315	8.00	.330	8.38
B	.140	3.56	.155	3.94
C	.070	1.78	.080	2.03
D	.300	7.62	.310	7.87
E	.020	0.51	.040	1.02
F	.150	3.81		

Leads 0.010" x 0.018" (0.25 x 0.46 mm) nominal.

FIGURE 1. Equivalent Circuit



R_1 Motional Resistance L_1 Motional Inductance
 C_1 Motional Capacitance C_0 Shunt Capacitance

PACKAGING

- CX-1 -Bulk Pack (Standard)
- Tray Pack (Optional)

PACKAGE HANDLING

The CX crystal is hermetically sealed in a ceramic package. Normal handling and soldering precautions for small, low thermal mass parts are adequate when installing or testing CX crystals. CX crystals may be wave soldered, with proper precaution taken to avoid desoldering the leads. A slow machine rate or too high a pre-heat temperature or solder bath temperature can damage the crystals. **Lead to package solder interface temperature should not exceed 175°C, glass lid to package seal rim temperature should not exceed 210°C.** If the seal rim reaches temperatures above the maximum specified, the package may lose its hermeticity. Loss of hermeticity results in a frequency decrease and motional resistance increase. Mishandling of CX crystals can cause cracking of the glass lid and loss of hermeticity.

STATEK CORPORATION

512 North Main Street, Orange, California 92868 (714) 639-7810 FAX (714) 997-1256

8891940 0000402 T35

10102-06/96

SPECIFICATIONS

Specifications are typical at 25°C unless otherwise noted.
Specifications are subject to change without notice.

Frequency	10 to 600 kHz
Calibration Tolerance* (see Table 1)	A, B, or C
Motional Resistance (R_1)	Figure 2 MAX.: 10-169.9 kHz, 2x Typ. 170-600 kHz, 2.5x Typ.
Motional Capacitance (C_1)	Figure 3
Quality Factor (Q)	Figure 4 Min. is 0.25x typ
Shunt Capacitance (C_0)	1.6 pF
Drive Level	10-24.9 kHz 1.5 μ W MAX. 25-600 kHz 3.0 μ W MAX.
Turning Point (T_0)**	Figure 5
Temperature Coefficient (k)	-0.035 ppm/°C ²
Aging, first year	5ppm MAX.
Shock, survival***	1,000g 1msec., ½ sine
Vibration, survival***	20g rms 10-2,000 Hz
Operating Temperature	-10°C to +70°C Commercial -40°C to +85°C Industrial -55°C to +125°C Military
Storage Temperature	-55°C to +125°C
Maximum Process Temperature	See package handling

*Tighter frequency calibration available.

**Other turning point available.

***Higher shock and vibration available.

TABLE 1. CX-1H Crystal Calibration Tolerance at 25°C
Frequency Range (kHz)

Calibration	10-74.9	75-169.9	170-249.9	250-600
A	±0.003%	±0.005%	±0.01%	±0.02%
B	±0.01%	±0.01%	±0.02%	±0.05%
C	±0.1%	±0.1%	±0.2%	±0.5%

HOW TO ORDER CX-1H CRYSTALS

CX-1H -03 32.768 kHz (A / I)

"S" if special or custom design.
Blank if Std.

Side Leads

Frequency

*Calibration Tolerance @25°C
(A)
(B)
(C)

Temp. Range:
C = Commercial
I = Industrial
M = Military

*Other calibration fill in ppm

FIGURE 2. CX-1H Typical Motional Resistance (R_1)

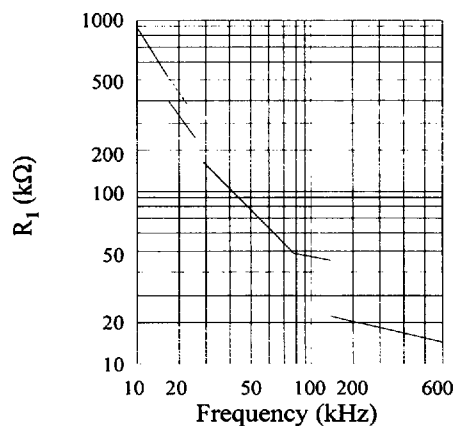


FIGURE 3. CX-1H Typical Motional Capacitance (C_1)

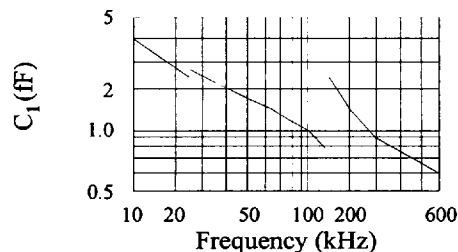


FIGURE 4. CX-1H Typical Quality Factor (Q)

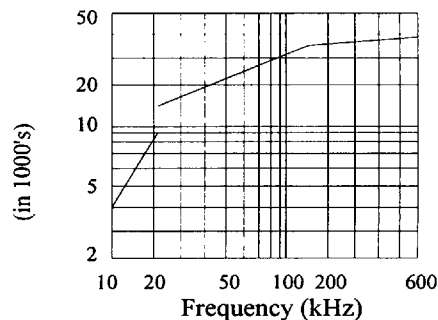
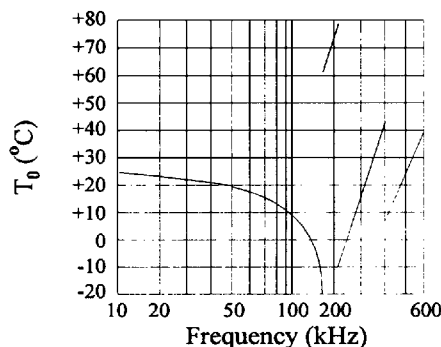


FIGURE 5. CX-1H Typical Turning Point Temperature (T_0)



Note: Frequency deviation from frequency @ turning point temp.

$$\frac{f-f_0}{f_0} = k(T-T_0)^2$$