

XPiQ inc.

Intelligent Design Quality Product

10/15 Watts WE10/15 Series



- Industry Standard Package
- Designed For Telecom Standards
- Low Voltage Outputs to 1.8 Volts
- Under Voltage Lockout
- Remote On/Off
- Output Voltage Adjustment
- Conducted EMI level B with External Filtering

Specification

Input

- Input Voltage**
 - 18-36 VDC
 - 36-75 VDC
- Input Current**
 - 0.17 A - 0.82 A typical for WE15
 - 0.21 A - 0.52 A typical for WE10
- Start Up Time**
 - Less than 10 ms
- Remote On/Off**
 - Negative Logic Standard
 - Positive Logic Available.
- Input Reverse Voltage Protection**
 - External components required
- Undervoltage Lockout Protection**
 - 24 Vin - 11 V min, 14 V typical
 - 48 Vin - 20 V min, 27 V typical

Output

- Output Voltage**
 - 1.8 - 12 VDC
- Output Voltage Adjustment**
 - ±10%
- Minimum Load**
 - 0.4 Watts
- Line Regulation**
 - ±0.5% maximum
- Load Regulation**
 - ±1.0% maximum
- Output Voltage Accuracy**
 - ±4%
- Ripple and Noise**
 - 100 mV typical
- Transient Response**
 - 5% deviation 0.8 ms recovery time for 25% load change
- Temperature Coefficient**
 - ±0.015%/°C
- Overvoltage Protection**
 - Standard with auto restart
 - see chart
- Overcurrent Protection**
 - continuous with auto restart

- Short Circuit Protection**
 - Protected to short circuit conditions

General

- Efficiency**
 - 80% typical for 5 V models
- Isolation Voltage**
 - 1500 VDC Input to Output
- MTBF**
 - 2.4 million hours per Bellcore
- Package Style**
 - Potted module with plastic case
- Weight**
 - 28.3 grams typical

Environmental

- Operating Temperature**
 - -40°C to 105°C Case Temperature
- Cooling**
 - 200 LFM
 - Full power with Convection cooling
 - WE10 - Full power to 80°C ambient
 - WE15 - Full power to 60°C ambient
 - See derating chart
- Storage Temperature**
 - -55°C to +125°C
- Shock**
 - 70G/6ms 1/2 sine 3 shocks x 6 sides
- Vibration**
 - 2.5G RMS, 10-55Hz, sweep vibration 1 hour each axis

Safety

- Safety Approvals**
 - UL1950, EN60950, VDE 0805, CSA 22.2 No. 950, CE marked for LVD
- EMI/EMC**
 - EN55022 and FCC level B Part 15 with external filtering
- Warranty**
 - 1 Year

Output Voltage	Output Current	Output Power	OVP Clamp	Model 24 V Input	Model 48 V Input
Single Output					
1.80	3.00	5.40	2.6-4.0 V	WE15-218	WE15-318
2.00	3.00	6.00	2.6-4.0 V	WE15-220	WE15-320
2.50	3.00	7.50	3.25-4.0 V	WE15-225	WE15-325
3.30	2.42	8.00	3.7-5.70 V	WE10-200	WE10-300
3.30	3.00	10.00	3.7-5.70 V	WE15-200	WE15-300
5.00	2.00	10.00	5.6-7.0 V	WE10-201	WE10-301
5.00	3.00	15.00	5.6-7.0 V	WE15-201	WE15-301
12.0	0.83	10.00	13.2-16.0 V	WE10-202	WE10-302
12.0	1.25	15.00	13.2-16.0 V	WE15-202	WE10-302
Dual Output					
±12.0	0.42	10.00	13.2-18.0 V	WE10-205	WE10-305

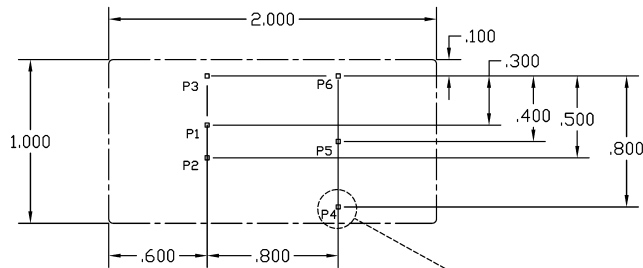
Notes

Negative logic is standard. For positive logic add "H" suffix to part number.

Mechanical Details

Single Output

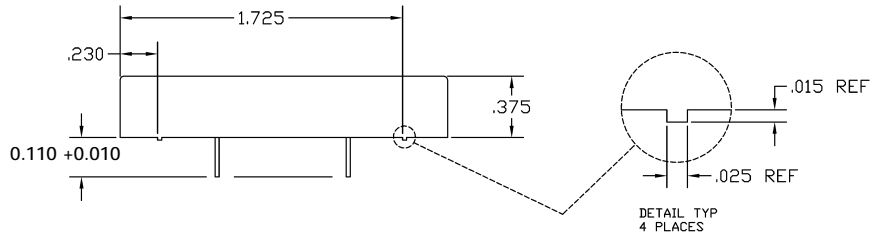
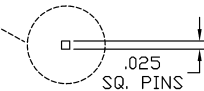
Pin	Pin Designation
1	-VIN
2	+VIN
3	On/Off
4	+VOUT
5	TRIM
6	-Vout



REQUIRED PCB LAYOUT
VIEW LOOKING DOWN
ON CUSTOMER BOARD

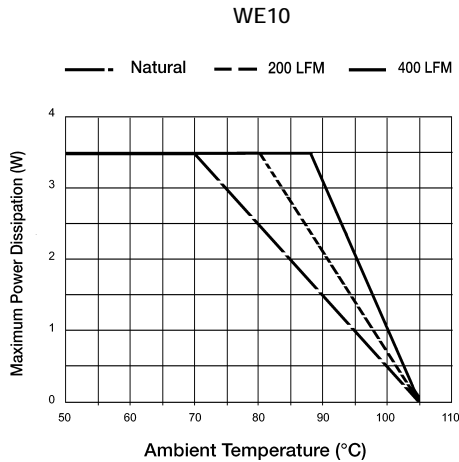
Dual Output

Pin	Pin Designation
1	-VIN
2	+VIN
3	On/Off
4	+VOUT
5	Common
6	-Vout

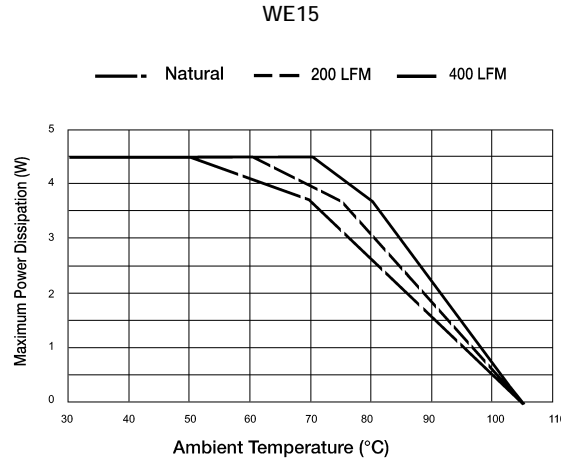


DETAIL TYP
4 PLACES

Derating Curve



WE10-2xx unit used as a standard curve



WE15-3xx unit used as a standard curve