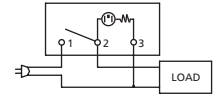
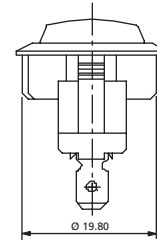
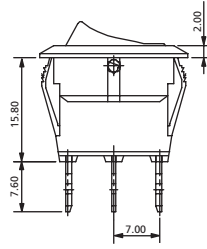
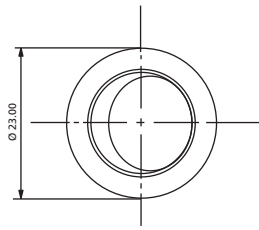


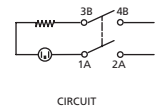
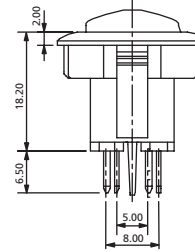
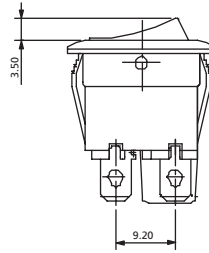
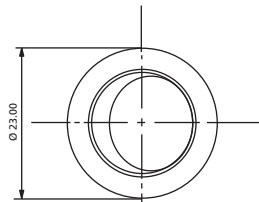
Rocker Switches

Ø23 mm Round illuminated Rocker Switches

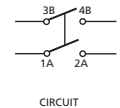
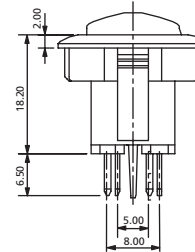
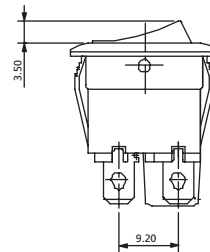
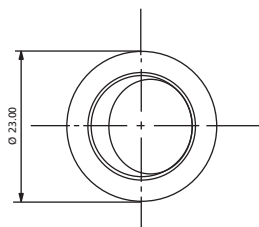
RK12 Series



RK12S Single Pole



RK12D U Double Poles illuminated

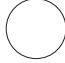







RK12D N Double Poles non-illuminated

TERMINAL

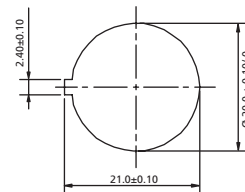
-  **Q** 4.8mm TAB, 0.8mm Thick
-  **D1** Solder Tag Type 1
-  **D2** Solder Tag Type 2
-  **D3** Solder Tag Type 3
-  **H** Thru Hole Straight

ACTUATOR SHAPE

- A** 
- D** 
- B** 
- E** 
- I** 
- H** 

PANEL SIZE

PANEL CUT-OUT
Snap-in mounting



How to order:

RK12 1 2 3 4 5 6 7

- 1** **POLES:**
S Single Pole
D Double Poles
- 2** **SWITCHING:**
1 ON - OFF
2 ON - ON (RK12S Only)
- 3** **TERMINAL**
Q (See above drawings): Quick Connect
D1 Solder Tag Type 1
D2 Solder Tag Type 2
D3 Solder Tag Type 3
H Thru Hole Straight
- 4** **ACTUATOR MARKING:**
A See above drawings
B See above drawings
C See above drawings
D See above drawings
E See above drawings
F See above drawings
- 5** **ILLUMINATION:**
N No Illuminated (Standard)
T No Illuminated with transparent Rocker
U Illuminated
- 6** **BASE COLOR:**
A Black
H Grey
B White
- 7** **ACTUATOR COLOR:**
A Black
H Grey
B White
C Red
F Green
D Orange
G Blue (RK12S Only)
E Yellow (RK12D Only)

General Specifications:

FEATURES

- » Round rocker switch
- » Single pole or double pole
- » Illuminated or non-illuminated

MATERIALS of RK12S

- » Contact Arm (RK12S): Silver plated copper alloy
- » Movable Contact Arm (RK12D): Phosphorus bronze
- » Movable Contact (RK12D): Silver alloy
- » Terminals: Silver plated copper
- » Lamp: Neon for AC; Tungsten bulb for DC
- » Spring: Piano wire

MECHANICAL

- » Temperature Range: -20°C to +125°C

ELECTRICAL

- » Electrical Life: 10,000 cycles
- » Rating (RK12S): 20A125VAC, 12A250VAC
10A125VAC / 6A250VAC
6A125VAC / 3A250VAC
6A250VAC
10(4)A250VAC-T125
- » Rating (RK12D): 12A125VAC, 10A250VAC
10A125VAC / 8A250VAC
10A250VAC
10(4)A250V-T125/55
- » Initial Contact Resistance: 20mΩ max.
- » Insulation Resistance: 100MΩ min. at 500VDC