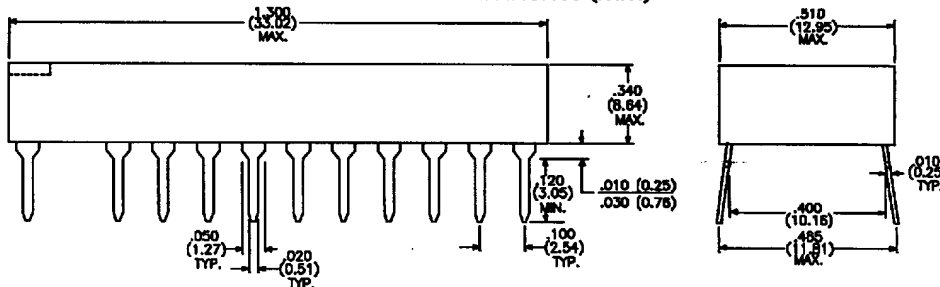


10K & 100K ECL BUFFERED DELAY MODULES

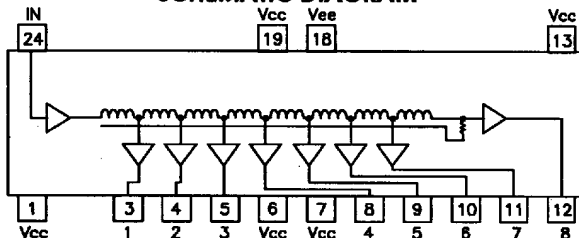
8-TAP 100K ECL THROUGH-HOLE DIL DDECL-XXX SERIES

PART NUMBER	OUTPUT DELAY (ns)	TAP-TO-TAP DELAY (ns)
DDECL-16	16 ± 1.50	2.0 ± 1.0
DDECL-20	20 ± 2.00	2.5 ± 1.0
DDECL-24	24 ± 2.00	3.0 ± 1.0
DDECL-28	28 ± 2.00	3.5 ± 1.5
DDECL-32	32 ± 2.00	4.0 ± 1.5
DDECL-36	36 ± 2.00	4.5 ± 1.5
DDECL-40	40 ± 2.00	5.0 ± 1.5
DDECL-44	44 ± 2.20	5.5 ± 1.5
DDECL-48	48 ± 2.40	6.0 ± 2.0
DDECL-52	52 ± 2.60	6.5 ± 2.0
DDECL-56	56 ± 2.80	7.0 ± 2.0
DDECL-60	60 ± 3.00	7.5 ± 2.0
DDECL-72	72 ± 3.60	9.0 ± 2.5
DDECL-80	80 ± 4.00	10.0 ± 2.5
DDECL-88	88 ± 4.40	11.0 ± 2.5
DDECL-96	96 ± 4.80	12.0 ± 2.5

PHYSICAL DIMENSIONS All dimensions in inches (mm)



SCHEMATIC DIAGRAM

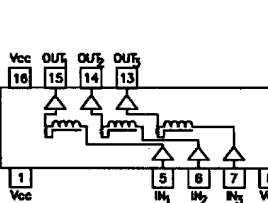


PART NUMBER DESCRIPTION DDECL - XXX XX
 8-Tap 100K ECL Delay Line
 Total Delay in nanoseconds (ns)
 Grade: Blank = Commercial ; M = Military

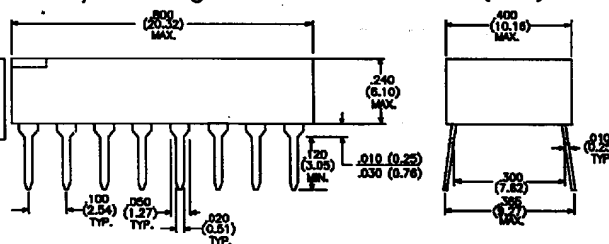
TRIPLE OUTPUT 10K ECL THROUGH-HOLE DIL MECL-XXX SERIES

PART NUMBER	OUTPUT DELAY (ns)	PART NUMBER	OUTPUT DELAY (ns)
MECL-5	5 ± 1.00	MECL-19	19 ± 2.00
MECL-6	6 ± 1.00	MECL-20	20 ± 2.00
MECL-7	7 ± 1.00	MECL-21	21 ± 2.00
MECL-8	8 ± 1.00	MECL-22	22 ± 2.00
MECL-9	9 ± 1.00	MECL-23	23 ± 2.00
MECL-10	10 ± 1.50	MECL-24	24 ± 2.00
MECL-11	11 ± 1.50	MECL-25	25 ± 2.00
MECL-12	12 ± 1.50	MECL-30	30 ± 2.00
MECL-13	13 ± 1.50	MECL-40	40 ± 2.00
MECL-14	14 ± 1.50	MECL-50	50 ± 2.50
MECL-15	15 ± 2.00	MECL-60	60 ± 3.00
MECL-16	16 ± 2.00	MECL-70	70 ± 3.50
MECL-17	17 ± 2.00	MECL-75	75 ± 3.75
MECL-18	18 ± 2.00	MECL-100	100 ± 5.0

SCHEMATIC DIAGRAM



PHYSICAL DIMENSIONS Dimensions in inches (mm)
 Military Part Height for MECL-XXXM: .300 (7.62) Max.

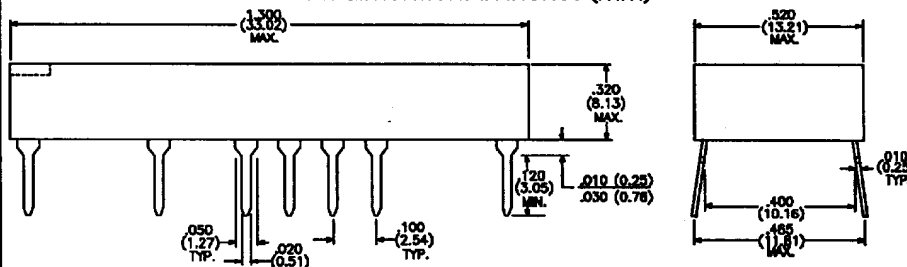


PART NUMBER DESCRIPTION MECL - XXX X
 Triple Output 10K ECL Delay Line
 Total Delay in nanoseconds (ns)
 Grade: Blank = Commercial ; M = Military

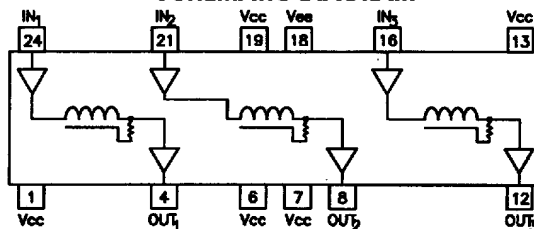
TRIPLE OUTPUT 100K ECL THROUGH-HOLE DIL MMECL-XXX SERIES

PART NUMBER	OUTPUT DELAY (ns)	PART NUMBER	OUTPUT DELAY (ns)
MMECL-5	5 ± 1.00	MMECL-19	19 ± 2.00
MMECL-6	6 ± 1.00	MMECL-20	20 ± 2.00
MMECL-7	7 ± 1.00	MMECL-21	21 ± 2.00
MMECL-8	8 ± 1.00	MMECL-22	22 ± 2.00
MMECL-9	9 ± 1.00	MMECL-23	23 ± 2.00
MMECL-10	10 ± 1.50	MMECL-24	24 ± 2.00
MMECL-11	11 ± 1.50	MMECL-25	25 ± 2.00
MMECL-12	12 ± 1.50	MMECL-30	30 ± 2.00
MMECL-13	13 ± 1.50	MMECL-40	40 ± 2.00
MMECL-14	14 ± 1.50	MMECL-50	50 ± 2.50
MMECL-15	15 ± 2.00	MMECL-60	60 ± 3.00
MMECL-16	16 ± 2.00	MMECL-70	70 ± 3.50
MMECL-17	17 ± 2.00	MMECL-75	75 ± 3.75
MMECL-18	18 ± 2.00	MMECL-100	100 ± 5.0

PHYSICAL DIMENSIONS All dimensions in inches (mm)



SCHEMATIC DIAGRAM



PART NUMBER DESCRIPTION MMECL - XXX XX
 TRIPLE 100K ECL Delay Line
 Total Delay in nanoseconds (ns)
 Grade: Blank = Commercial ; M = Military
 Specifications subject to change without notice



15801 Chemical Lane
 Huntington Beach, California 92649-1595
 Phone: (714) 898-0960 • (213) 594-8918
 FAX: (714) 896-0971