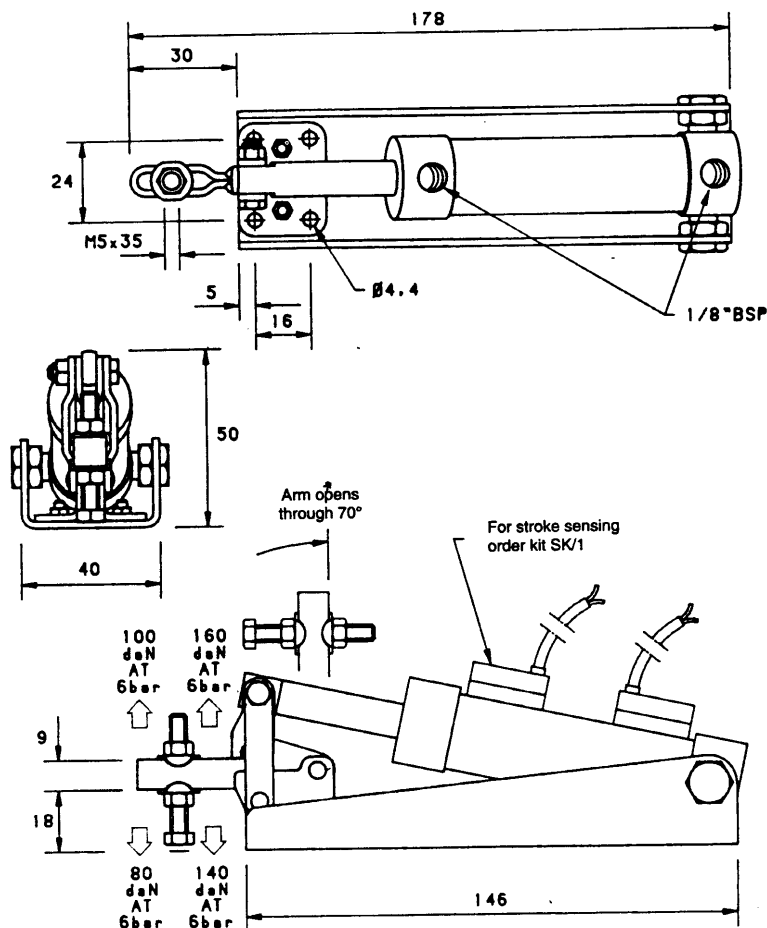
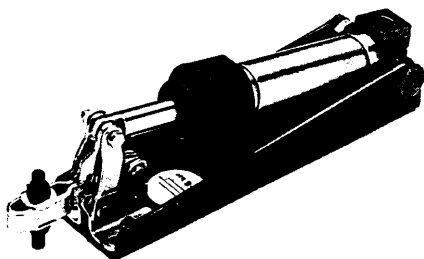


PNEUMATIC VERTICAL CLAMPS

MODEL V75X

7148823



Arm: The spindle position is adjustable along the arm.
Base: Flanged.

Nominal Holding Force: 75 daN

Operating pressure range: 2-6 bar (30-88 p.s.i.g.)

Max. cycles/min. at 6 bar: 40.

Swept volume per cycle: 0.02 L³ (1.2 cu. in.)

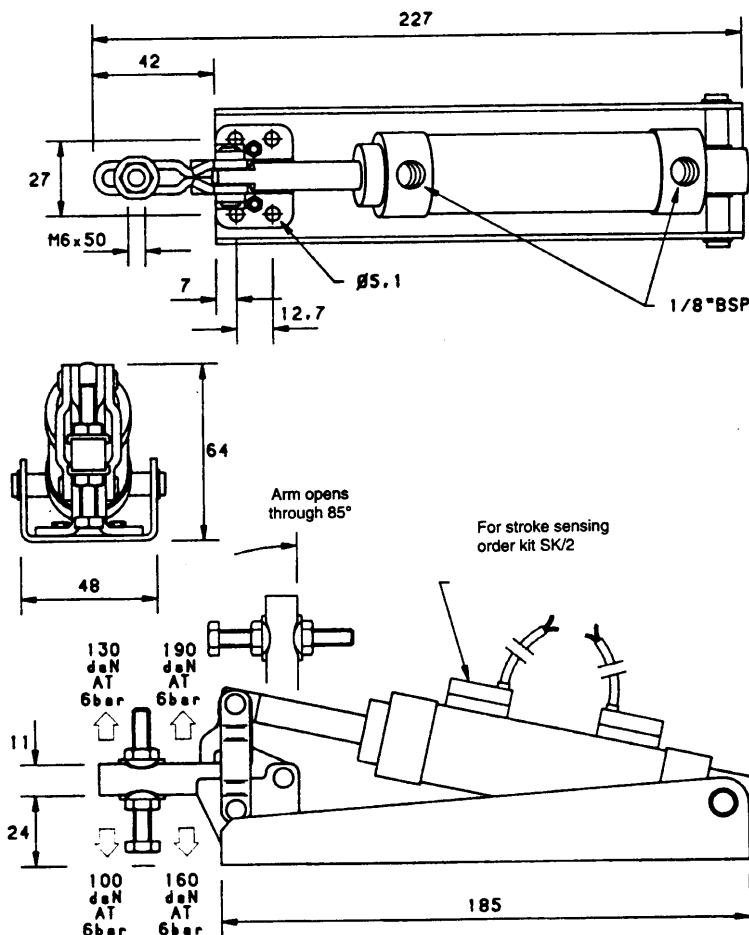
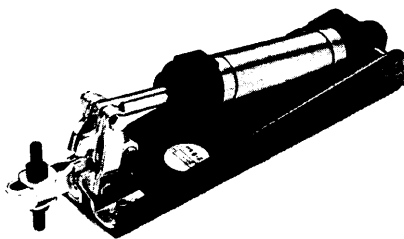
Weight: 0.40 Kg

Supplied complete with: MB0535 Setscrew & nuts.
FW05/10 Flanged washers.

For stroke sensing order SK/1 Sensing Kit.
See "Accessories" for other items.

MODEL V150X

7149025



Arm: The spindle position is adjustable along the arm.
Base: Flanged.

Nominal Holding Force: 150 daN

Operating pressure range: 2-6 bar (30-88 p.s.i.g.)

Max. cycles/min. at 6 bar: 60.

Swept volume per cycle: 0.04 L³ (2.4 cu. in.)

Weight: 0.65 Kg

Supplied complete with: MB0650 Setscrew & nuts.
FW06/12 Flanged washers.

For stroke sensing order SK/2 Sensing Kit.
See "Accessories" for other items.

BRAUER
HMC-BRAUER LIMITED

TELEPHONE: 01908-374022

FAX: 01908-641628