

PLEASE CHECK WWW.MOLEX.COM FOR LATEST PART INFORMATION

Part Number: **0737963005**
Status: **Planned for Obsolescence**
Description: 0.80mm (.031") Pitch Ultra+™ VHDCI Strain Relief, Offset Zinc Die Cast

Documents:

[3D Model](#) [RoHS Certificate of Compliance \(PDF\)](#)
[Drawing \(PDF\)](#)

General

Product Family	I/O Connectors
Series	73796
Application	Wire-to-Board
Comments	Complete Kit
Component Type	Plug
Product Name	SCSI+, VHDCI
Type	N/A

Physical

Circuits (Loaded)	68
Keying to Mating Part	N/A
Lock to Mating Part	Yes
Orientation	N/A
PCB Retention	N/A
Packaging Type	Bag
Panel Mount	No
Pitch - Mating Interface (in)	0.031 In
Pitch - Mating Interface (mm)	0.80 mm
Polarized to Mating Part	Yes
Wire Size AWG	28

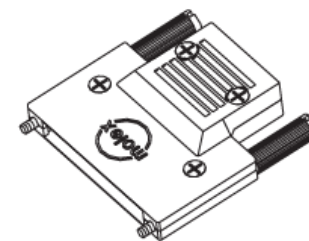
Electrical

Current - Maximum per Contact	N/A
Grounding to Panel	N/A
Shielded	Yes

Material Info

Reference - Drawing Numbers

Packaging Specification	PK-70873-0869
Sales Drawing	SD-70629-2001, SD-73796-003, SD-73796-005, SD-73796-008, SD-73796-009, SD-79099-1001, SD-79099-1002



Series

image - Reference only

EU RoHS

**ELV and RoHS
Compliant**

REACH SVHC

Not Reviewed

Halogen-Free

Status

Not Reviewed

China RoHS



**Need more information on product
environmental compliance?**

Email productcompliance@molex.com
For a multiple part number RoHS Certificate of
Compliance, [click here](#)

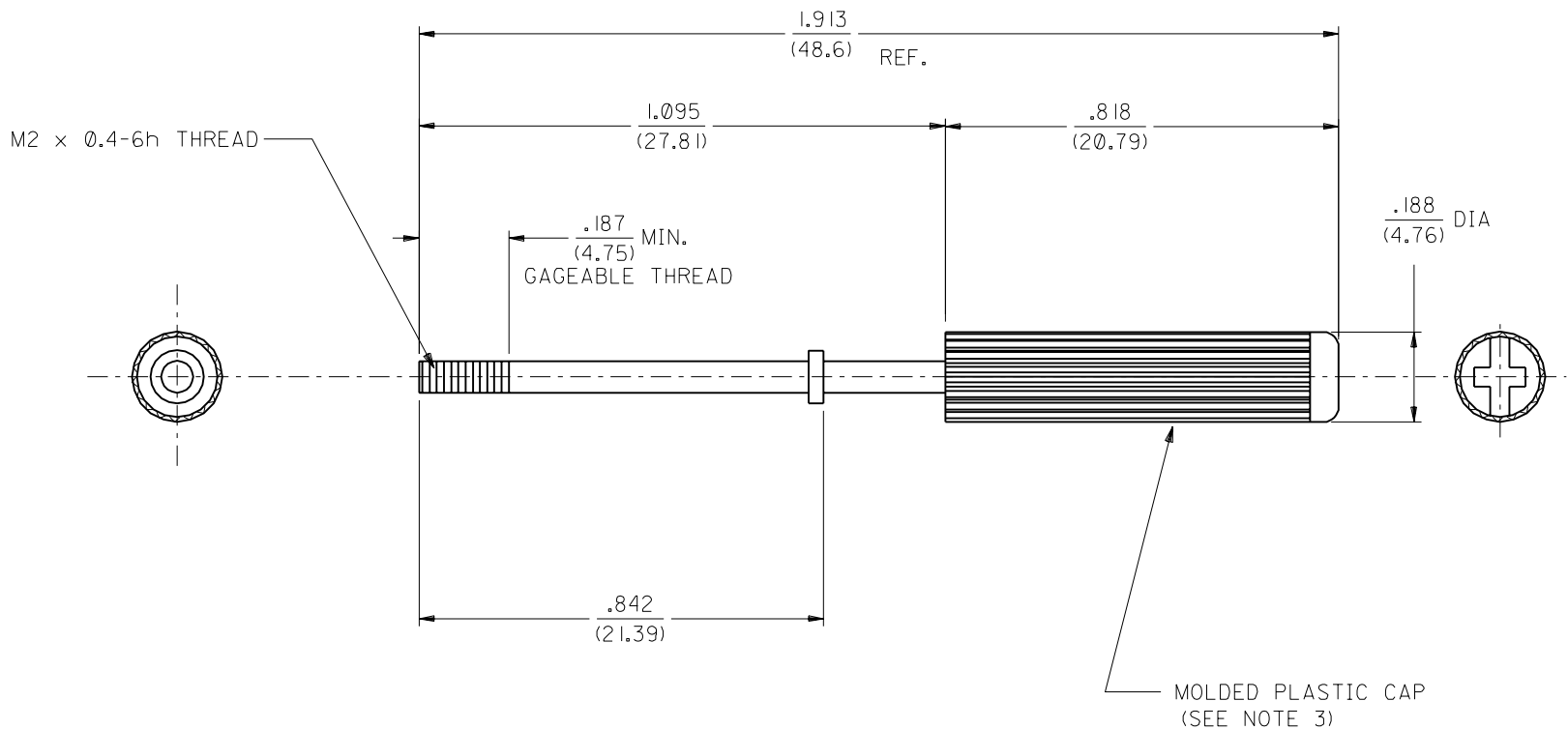
Please visit the [Contact Us](#) section for any
non-product compliance questions.

Search Parts in this Series

[73796Series](#)

Use With

[71425 Ultra+ VHDCI Plug Kit](#)



NOTES:

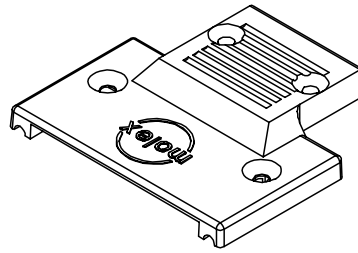
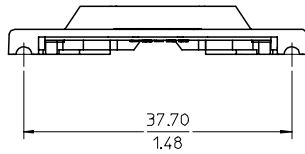
1. MATERIAL: JACKSCREW SHAFT: COLD ROLLED STEEL, JIS, SWRM6, TENSILE STRENGTH 60KSI MIN.
MOLDED CAP: GLASS FILLED POLYESTER, 94V-0; BLACK
2. FINISH: NICKEL PLATE.
3. STRAIGHT AND #1 PHILLIPS DRIVER SLOTS MUST PROVIDE 2.5 in-lb MIN OF TORQUE.

B				REV SPEC PER ECR UDT 1999-0079 08/11/98 KRS
A				INITIAL RELEASE PER ECR U81488 1/13/98 sas
	MFG.	SH.	REV.	LTR.
				REVISIONS

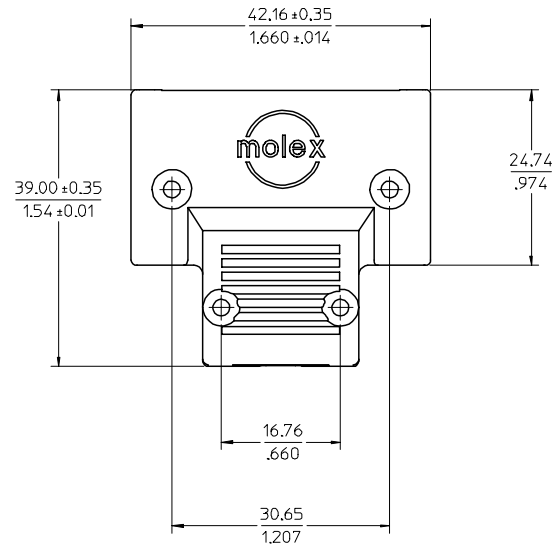
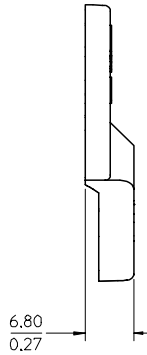
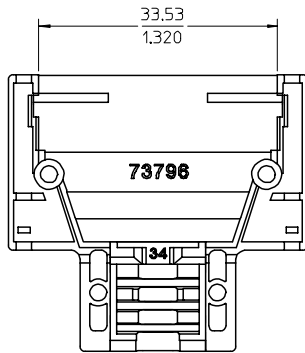
UNLESS OTHERWISE SPECIFIED TOLERANCES: ANGULAR = 1/2°		TITLE	
3 PLACE ± .010	METRIC	VHDCI JACKSCREW	
2 PLACE ± .015	±(0.25)	MOLDEX INCORPORATED	
1 PLACE	±(0.38)	SHEET NO.	DATE
DRAFT WHERE APPLICABLE MUST REMAIN WITHIN DIMENSIONS		U.S.A.	10F 1
DRWG. BY: KRS	CHK'D. BY: SAS	PART NO.	DRWG. NO.
APP'D. BY: MB	SCALE: 4 : 1	70629-2001	SD-70629-2001
FILE NAME: 70629x22.DGN		THIS DRAWING CONTAINS INFORMATION THAT IS PROPRIETARY TO MOLEX INC. AND SHOULD NOT BE USED WITHOUT WRITTEN PERMISSION.	
		DIV.	SIZE
		DC	B

REVISE ONLY ON CAD SYSTEM

J
I
H
G
F
E
D
C
B
A



- NOTES:
 1. MATERIAL: ZINC
 2. FINISH: NON-CONDUCTIVE BLACK FINISH
 OUTSIDE SURFACES ONLY
 3. THIS PART MATES WITH 71425-3001 AND 73796-2***
 4. DULL NICKEL OVER COPPER FLASH.
 5. LOGO TO BE ON A 0.25(0.10) RAISED PAD.

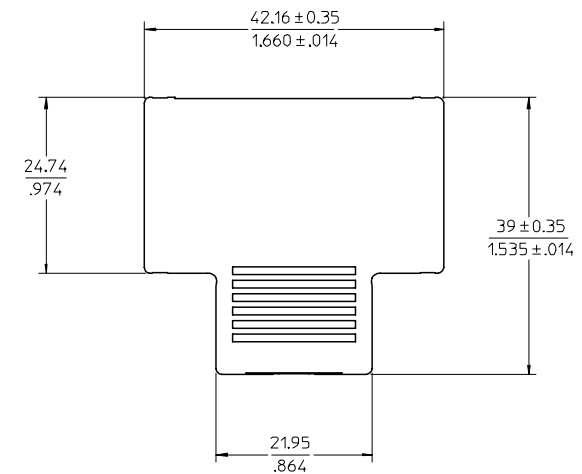
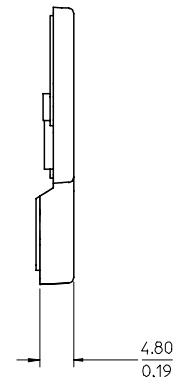
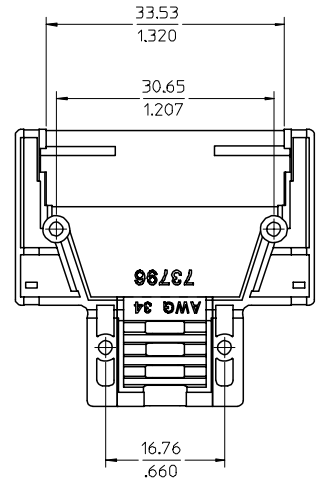
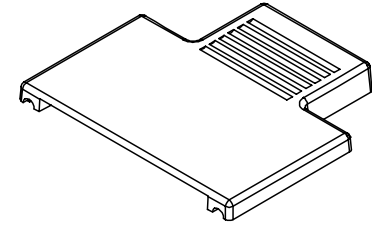
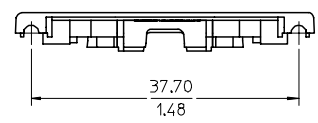


MATERIAL NUMBER	FINISH	WIRE AWG	LOGO
73796-2018	NICKEL (SEE NOTE 4)	28 AWG	MOLEX
73796-2015	BLACK (SEE NOTE 2)	28 AWG	MOLEX
73796-2012	BLACK (SEE NOTE 2)	30 AWG	HP
73796-2009	BLACK (SEE NOTE 2)	30 AWG	NO LOGO
73796-2006	NICKEL (SEE NOTE 4)	30 AWG	MOLEX
73796-2003	BLACK (SEE NOTE 2)	30 AWG	MOLEX
73796-2027	BLACK (SEE NOTE 2)	34 AWG	MOLEX
73796-2030	NICKEL (SEE NOTE 4)	34 AWG	MOLEX

REVISED ECL NO: UCP2004-1796 DRWN: RLWHITE 2004/08/10 CHKD: BBARKER 2004/08/10 APPR: SMILLER 2004/08/18	DESCRIPTION D	QUALITY SYMBOLS	GENERAL TOLERANCES (UNLESS SPECIFIED)		SCALE 2:1	DESIGN UNITS METRIC	THIRD ANGLE PROJECTION	REVISE ON CAD ONLY	
		▽ - 0 ◻ - 0	mm INCH 4 PLACES ± --- ± --- 3 PLACES ± --- ± .005 2 PLACES ± 0.13 ± .010 1 PLACE ± 0.25 ± --- ANGULAR ± 1/2°	DIMENSION STYLE MM/IN		TITLE VHDCI UPPER DIE CAST SHELL			
		DRAFT WHERE APPLICABLE MUST REMAIN WITHIN DIMENSIONS			DRAWN BY DATE KSTILES 10/11/2002 CHECKED BY DATE KSTILES 10/14/2002 APPROVED BY DATE MBANAKIS 10/18/2002	MATERIAL NO. SEE CHART DOCUMENT NO. SD-73796-003 SHEET NO. 1 OF 1		MOLEX INCORPORATED	
		THIS DRAWING CONTAINS INFORMATION THAT IS PROPRIETARY TO MOLEX INCORPORATED AND SHOULD NOT BE USED WITHOUT WRITTEN PERMISSION							

- NOTES:
 1. MATERIAL: ZINC
 2. FINISH: NON-CONDUCTIVE BLACK FINISH
 OUTSIDE SURFACES ONLY
 3. THIS PART MATES WITH 71425-3001 AND 73796-2***
 4. DULL NICKEL OVER COPPER FLASH.

NOTE FOR LEAD FREE CONVERSION:
 THE PRIMARY SHIPPING CARTON WILL BE LABELED "COMPLIANT TO RoHS
 DIRECTIVE 2002/95/EC AND ELV ANNEX II OF DIRECTIVE 2000/53/EC".
 CARTONS WITHOUT THIS LABEL MAY CONTAIN PRODUCT WITH LEAD.



MATERIAL NUMBER	FINISH	WIRE AWG
73796-2014	NICKEL (SEE NOTE 4)	28 AWG
73796-2010	BLACK (SEE NOTE 2)	28 AWG
73796-2008	NICKEL (SEE NOTE 4)	30 AWG
73796-2004	BLACK (SEE NOTE 2)	30 AWG
73796-2020	BLACK (SEE NOTE 2)	34 AWG
73796-2022	NICKEL (SEE NOTE 4)	34 AWG

ROHS COMPLIANT EC NO: UCP2006-1389 DRWN: MSIBARRA 2006/01/18 CHKD: BSMART 2006/01/24 APPR: SMILLER 2006/01/26	QUALITY SYMBOLS	GENERAL TOLERANCES (UNLESS SPECIFIED)	SCALE 2:1	DESIGN UNITS METRIC	THIRD ANGLE PROJECTION	REVISE ON CAD ONLY															
	DESCRIPTION ▽ = 0 □ = 0	<table border="1"> <thead> <tr> <th></th> <th>mm</th> <th>INCH</th> </tr> </thead> <tbody> <tr> <td>4 PLACES</td> <td>± .---</td> <td>± .---</td> </tr> <tr> <td>3 PLACES</td> <td>± .---</td> <td>± .005</td> </tr> <tr> <td>2 PLACES</td> <td>± 0.13</td> <td>± .010</td> </tr> <tr> <td>1 PLACE</td> <td>± 0.25</td> <td>± .---</td> </tr> </tbody> </table>		mm	INCH	4 PLACES	± .---	± .---	3 PLACES	± .---	± .005	2 PLACES	± 0.13	± .010	1 PLACE	± 0.25	± .---	DIMENSION STYLE MM/IN	TITLE		
			mm	INCH																	
	4 PLACES	± .---	± .---																		
3 PLACES	± .---	± .005																			
2 PLACES	± 0.13	± .010																			
1 PLACE	± 0.25	± .---																			
DRAFT WHERE APPLICABLE MUST REMAIN WITHIN DIMENSIONS	ANGULAR ±1/2°	DRAWN BY DATE KSTILES 10/11/2002	VHDCl LOWER DIE CAST SHELL																		
APPROVED BY DATE MBANAKIS 10/18/2002	CHECKED BY DATE KSTILES 10/14/2002	MOLEX INCORPORATED																			
THIS DRAWING CONTAINS INFORMATION THAT IS PROPRIETARY TO MOLEX INCORPORATED AND SHOULD NOT BE USED WITHOUT WRITTEN PERMISSION	MATERIAL NO. SEE CHART	DOCUMENT NO. SD-73796-005	SHEET NO. 1 OF 1																		

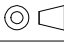
30 AWG - VHDCI PLUG BACKSHELL KITS

MATERIAL NUMBER	MATERIAL NUMBER	MATERIAL NUMBER	MATERIAL NUMBER	QUANTITY	DESCRIPTION
73796-3004 BLACK FINISH KIT	73796-3003 BLACK FINISH KIT	73796-3002 NICKEL PLATE KIT	73796-3001 BLACK FINISH KIT		
73796-2012 - BLACK FINISH - HP LOGO	73796-2009 - BLACK FINISH - NO LOGO	73796-2006 - NICKEL PLATE - MOLEX LOGO	73796-2003 - BLACK FINISH - MOLEX LOGO	1	UPPER SHELL 
73796-2004 - BLACK FINISH	73796-2004 - BLACK FINISH	73796-2008 - NICKEL PLATE	73796-2004 - BLACK FINISH	1	LOWER SHELL 
70629-2001	70629-2001	70629-2001	70629-2001	2	JACKSCREW 
79099-1001	79099-1001	79099-1003	79099-1001	2	LONG SCREW 
79099-1002	79099-1002	79099-1004	79099-1002	2	SHORT SCREW 

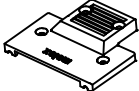
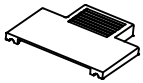
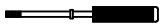


SEE SHEET 2 FOR 28 AWG KITS


NOTES:

1. PACKAGED PER DRAWING PK-70873-0869.
2. FOR USE WITH PLUG ASSEMBLY KIT #71425-3001.
3. SEE TERMINATION PROCEDURE DRAWING SD-73796-009.

ELIMINATE SHEET 3 EC NO: UCP2009-2243 DRAWN: BBARKER 2009/03/25 CHKD: BSMART 2009/03/26 APPR: SMILLER 2009/03/27	QUALITY SYMBOLS ▼=0 ▽=0	GENERAL TOLERANCES (UNLESS SPECIFIED)		DIMENSION STYLE MM ONLY	SCALE	DESIGN UNITS METRIC	 THIRD ANGLE PROJECTION	
	4 PLACES ± --- ± --- 3 PLACES ± --- ± --- 2 PLACES ± --- ± --- 1 PLACE ± --- ± ---	mm INCH	DRAWN BY SAMPSON	DATE 2000/06/12	TITLE VHDCI DIECAST SHELL KIT			
	ANGULAR ±1/2°		CHECKED BY MBANAKIS	DATE 2000/06/12	MOLEX INCORPORATED			
	DRAFT WHERE APPLICABLE MUST REMAIN WITHIN DIMENSIONS		APPROVED BY MBANAKIS	DATE 2000/06/12	DOCUMENT NO. SD-73796-008		SHEET NO. 1 OF 2	
				MATERIAL NO. SEE TABLE	THIS DRAWING CONTAINS INFORMATION THAT IS PROPRIETARY TO MOLEX INCORPORATED AND SHOULD NOT BE USED WITHOUT WRITTEN PERMISSION			

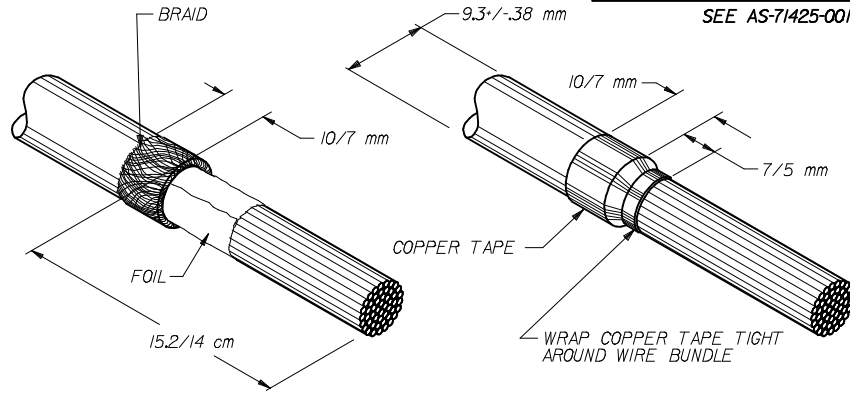
28 AWG - VHDCI PLUG BACKSHELL KITS

MATERIAL NUMBER	MATERIAL NUMBER	MATERIAL NUMBER	MATERIAL NUMBER	QUANTITY	DESCRIPTION
		73796-3006 NICKEL PLATE KIT	73796-3005 BLACK FINISH KIT		
		73796-2018 - NICKEL PLATE - MOLEX LOGO	73796-2015 - BLACK FINISH - MOLEX LOGO	1	UPPER SHELL 
		73796-2014 - NICKEL PLATE	73796-2010 - BLACK FINISH	1	LOWER SHELL 
		70629-2001	70629-2001	2	JACKSCREW 
		79099-1003	79099-1001	2	LONG SCREW 
		79099-1004	79099-1002	2	SHORT SCREW 

SEE SHEET 1 EC NO: UCP2009-2243 DRAWN BY: BARKER 2009/03/25 CHKD BY: SMART 2009/03/26 APPR: SMILLER 2009/03/27	QUALITY SYMBOLS	▽=0 ▽=0	GENERAL TOLERANCES (UNLESS SPECIFIED)	DIMENSION STYLE MM ONLY	SCALE	DESIGN UNITS METRIC	THIRD ANGLE PROJECTION
			mm INCH	DRAWN BY DATE	VHDCI DIECAST SHELL KIT  MOLEX INCORPORATED DOCUMENT NO. SD-73796-008 SHEET NO. 2 OF 2		
			4 PLACES ± --- ± ---	SAMPSON 2000/06/12			
			3 PLACES ± --- ± ---	CHECKED BY DATE			
			2 PLACES ± --- ± ---	MBANAKIS 2000/06/12			
		1 PLACE ± --- ± ---	APPROVED BY DATE				
		ANGULAR ±1/2°	MBANAKIS 2000/06/12				
			DRAFT WHERE APPLICABLE MUST REMAIN WITHIN DIMENSIONS	SEE TABLE			
				SIZE B			

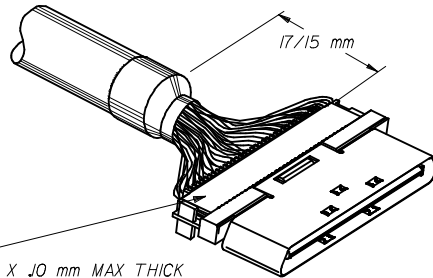
CABLE PREP AND TERMINATION INSTRUCTIONS

SEE AS-71425-001 FOR ADDITIONAL TERMINATION INFORMATION



	OPERATION	APPLICATION
STEP 1	CABLE PREP	FOR USE WITH RAPTOR TERMINATOR 623001100

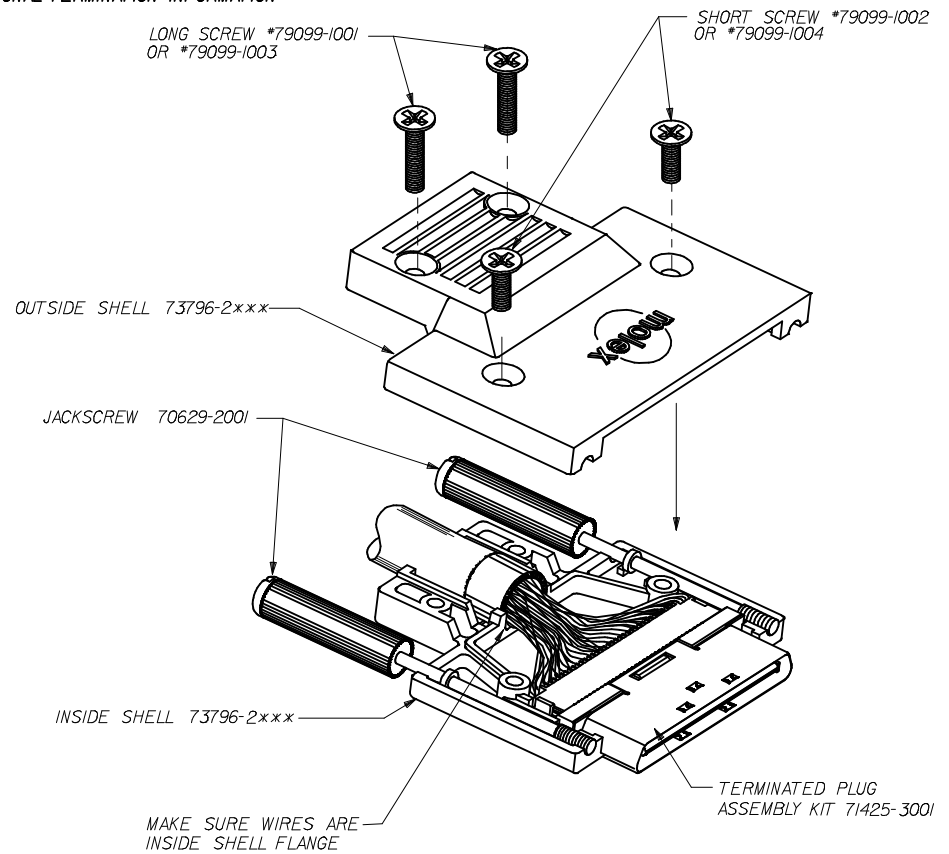
- 1 a) STRIP OUTER JACKET, EXPOSING 15.2 TO 14 cm OF WIRE.
- 1 b) FOLD BRAID BACK OVER CABLE JACKET AND TRIM.
- 1 c) TRIM FOIL BACK TO JACKET.
- 1 d) WRAP COPPER TAPE AROUND BRAID.
- 1 e) BLOW OFF PREPARED END WITH AIR.



MYLAR OR TEFLON TAPE
4.7 mm WIDE X 28.6 mm LONG X .10 mm MAX THICK
PLACE OVER TERMINATED WIRE COVERS (BOTH SIDES)

	OPERATION
STEP 2	TERMINATE CONNECTOR

- 2 a) TERMINATE CONNECTOR TO CABLE USING THE APPROPRIATE COLOR CODE/WIRE SCHEME SO THAT THE CONNECTOR IS 17/15 mm FROM THE CABLE JACKET END.
- 2 b) ENSURE THE CABLE JACKET IS CENTERED BEHIND THE CONNECTOR TO ALLOW PROPER FIT INTO BACKSHELL.
- 2 c) COVER TERMINATED WIRE COVERS WITH TEFLON OR MYLAR TAPE.



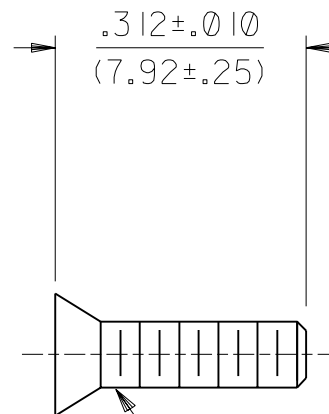
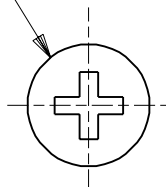
	OPERATION	APPLICATION
STEP 3	FINAL ASSEMBLY	FOR USE WITH BACKSHELL KIT 73796-3***

- 3 a) PLACE CABLE ASSEMBLY INTO INSIDE SHELL. ENSURE BRAID/TAPE IS PROPERLY SEATED INTO STRAIN RELIEF AREA.
- 3 b) ASSEMBLE OUTER SHELL TO INSIDE SHELL AND SCREW TOGETHER. RECOMMENDED ASSEMBLY PROCEDURE: CLAMP SHELLS TOGETHER AND INSTALL SHORT SCREWS FIRST. 8 In/lb MAX TORQUE ALLOWED.

2009/03/26

MINOR CHANGES EC NO: UCP2009-2243 DRW: BARKER 2009/03/25 CHK: BSWART 2009/03/27 APPR: SMILLER	DESCRIPTION 2009/03/27	QUALITY SYMBOLS	GENERAL TOLERANCES (UNLESS SPECIFIED) 4 PLACES ± --- ± --- 3 PLACES ± --- ± .005 2 PLACES ± 0.13 ± .010 1 PLACE ± 0.25 ± --- ANGULAR ± 1/2°	DIMENSION STYLE MM ONLY	SCALE DESIGN UNITS METRIC	THIRD ANGLE PROJECTION
		DRAWN BY SAMPSON		DATE 6/12/2000	TITLE VHDCI TERMINATION SPECIFICATION	
		CHECKED BY MBANAKIS		DATE 6/12/2000	MOLEX INCORPORATED	
		APPROVED BY MBANAKIS		DATE 6/12/2000	MATERIAL NO. N/A	DOCUMENT NO. SD-73796-009
DRAFT WHERE APPLICABLE MUST REMAIN WITHIN DIMENSIONS			THIS DRAWING CONTAINS INFORMATION THAT IS PROPRIETARY TO MOLEX INCORPORATED AND SHOULD NOT BE USED WITHOUT WRITTEN PERMISSION			

STANDARD PHILLIPS HEAD



#2-56 SCREW THREAD

NOTES:

- 1. MATERIAL: STAINLESS STEEL
- 2. FINISH: NON-CONDUCTIVE BLACK OXIDE
- 3. USED ON 73796 SHELLS.
- 4. PACK IN QUANTITIES OF 741 PCS.

DIMENSIONS SHOWN (METRIC) INCH

UNLESS OTHERWISE SPECIFIED TOLERANCES: ANGULAR ± 1/2°

	INCH	METRIC
3 PLACE	± .010	-----
2 PLACE	± .025	± (0.25)
1 PLACE	-----	± (0.64)

DRAFT WHERE APPLICABLE MUST REMAIN WITHIN DIMENSIONS

DRWG. BY SAS CHK'D. BY SAS
 APP'D. BY DB SCALE 4 : 1

REVISE ONLY ON CAD SYSTEM

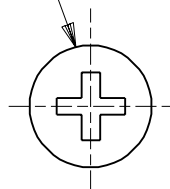
TITLE VHDCI LONG SHELL SCREW

MOLEX INCORPORATED SHEET NO. DATE
 LISLE, ILL. 60532 U.S.A. 1 of 1 04/11/00

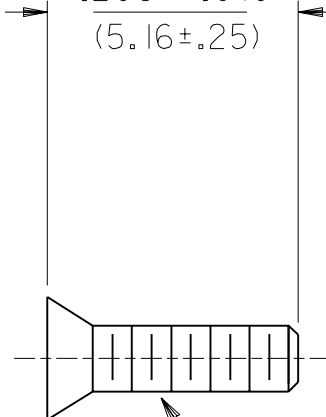
PART NO. 79099-1001 DRWG. NO. SD-79099-1001

FILE NAME 79099X2 DGN THIS DRAWING CONTAINS INFORMATION THAT IS PROPRIETARY TO MOLEX INC. AND SHOULD NOT BE USED WITHOUT WRITTEN PERMISSION. DIV. TC SIZE A

STANDARD PHILLIPS HEAD



.203±.010
(5.16±.25)



#2-56 SCREW THREAD

NOTES:

- 1. MATERIAL: STAINLESS STEEL
- 2. FINISH: NON-CONDUCTIVE BLACK OXIDE
- 3. USED ON 73796 SHELLS.
- 4. PACK IN QUANTITIES OF 741 PCS.

DIMENSIONS SHOWN (METRIC) INCH

UNLESS OTHERWISE SPECIFIED
TOLERANCES: ANGULAR ± 1/2°

	INCH	METRIC
3 PLACE	± .010	-----
2 PLACE	± .025	± (0.25)
1 PLACE	-----	± (0.64)

DRAFT WHERE APPLICABLE MUST
REMAIN WITHIN DIMENSIONS

DRWG. BY	SAS	CHK'D. BY	SAS
APP'D. BY	MB	SCALE	4 : 1

REVISE ONLY ON CAD SYSTEM

TITLE
VHDCI SHORT SHELL SCREW

	MOLEX INCORPORATED LISLE, ILL. 60532 U.S.A.	SHEET NO.	DATE
		1 of 1	04/11/00

PART NO.	DRWG. NO.
79099-1002	SD-79099-1002

FILE NAME	THIS DRAWING CONTAINS INFORMATION THAT IS PROPRIETARY TO MOLEX INC. AND SHOULD NOT BE USED WITHOUT WRITTEN PERMISSION.	DIV.	SIZE
		TC	A

INITIAL RELEASE
EC UDT2000-0966
04/11/00 sas