

1.25mm (0.049") PITCH CONNECTOR

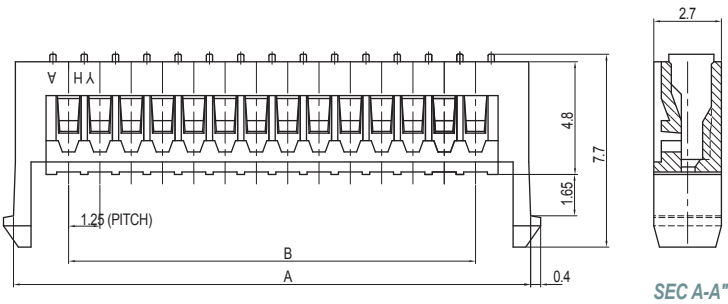
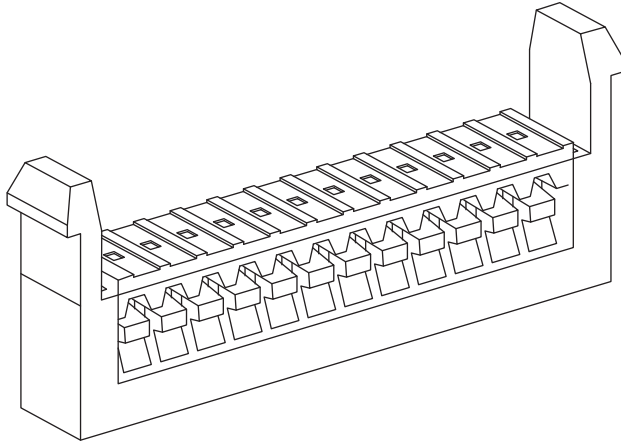


**Board-in Connector
Housing**

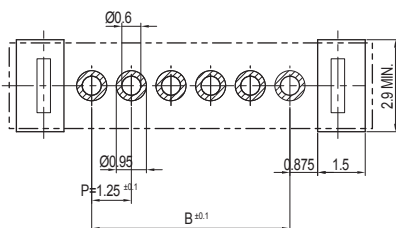
12521HS Series

DIP

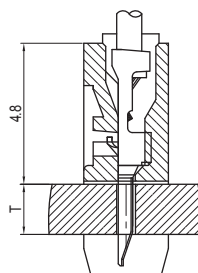
Straight



SEC A-A"



PCB LAYOUT



PCB ASSY

Material

I/NO	DESCRIPTION	TITLE	MATERIAL
1	HOUSING	12521HS	PA6T or PA46, UL 94V Grade

Available Pin

PARTS NO.	A	B
12521HS-12000	18.15	13.75
12521HS-20000	28.15	23.75
12521HS-30000	40.65	36.25

Specification

ITEM	SPEC
Voltage Rating	AC/DC 125V
Current Rating	AC/DC 1A
Operating Temperature	-25°C~+85°C
Contact Resistance	30mΩ MAX
Withstanding Voltage	AC250V/1min
Insulation Resistance	100MΩ MIN
Applicable Wire	AWG #26~#32
Applicable P.C.B	1.2~1.6mm
Applicable FPC/FFC	-
Solder Height	-
Crimp Tensile Strength	-
UL FILE NO	-

Application Terminal : 12521TS