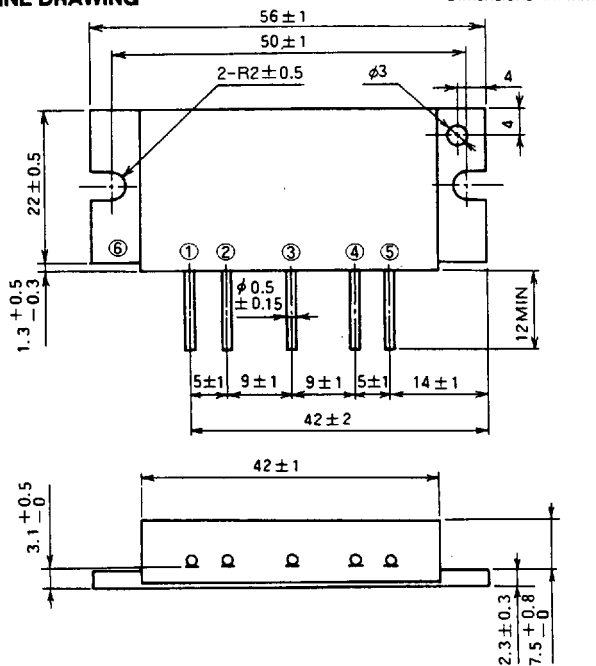
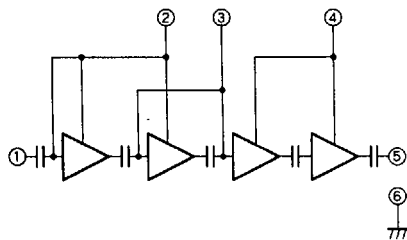


OUTLINE DRAWING

Dimensions in mm

**BLOCK DIAGRAM**

PIN :

- ① P_{in} : RF INPUT
- ② V_{CC1} : 1st. DC SUPPLY
- ③ V_{BB} : BASE BIAS SUPPLY
- ④ V_{CC2} : 2nd. DC SUPPLY
- ⑤ P_o : RF OUTPUT
- ⑥ GND : FIN

DataSheet4U.com

ABSOLUTE MAXIMUM RATINGS (T_C = 25 °C unless otherwise noted)

Symbol	Parameter	Conditions	Ratings	Unit
V _{CC}	Supply voltage		16	V
V _{BB}	Base bias		6	V
I _{CC}	Total current		5	A
P _{in(max)}	Input power	V _{CC1} ≤ 12.5V, Z _G = Z _L = 50 Ω	20	mW
P _{O(max)}	Output power	Ditto	20	W
T _{C(OP)}	Operation case temperature	Ditto	- 30 to 100	°C
T _{stg}	Storage temperature		- 40 to 110	°C

Note. Above parameters are guaranteed independently.

ELECTRICAL CHARACTERISTICS (T_C = 25 °C unless otherwise noted)

Symbol	Parameter	Test conditions	Limits		Unit
			Min	Max	
f	Frequency range	V _{CC1} = V _{CC2} = 12.5V V _{BB} = 5V P _{in} = 10mW Z _G = Z _L = 50 Ω	300	342	MHz
P _o	Output power		13		W
η _T	Total efficiency		30		%
2f _o	2nd. harmonic			- 30	dBc
3f _o	3rd. harmonic			- 30	dBc
ρ _{in}	Input VSWR			4	-
-	Load VSWR tolerance	V _{CC1} = 12.5V, V _{CC2} = 15.2V, V _{BB} = 5V P _o = 15W (P _{in} : controlled) Load VSWR ≥ 20:1 (All phase), Z _G = 50Ω	No degradation or destroy		-

Note. Above parameters, ratings, limits and conditions are subject to change.