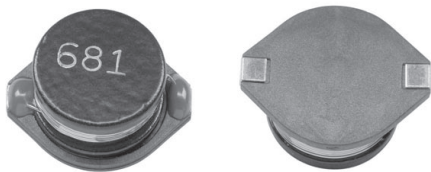




## High Current, Surface Mount Inductor



### FEATURES

- High energy storage.
- Low resistance.
- Tape and reel packaging for automatic handling.

### ELECTRICAL SPECIFICATIONS

**Inductance Range:** 1.0 $\mu$ H to 1000 $\mu$ H, tested at 1.0Vrms.

**Inductance Tolerance:** 20%, tighter tolerances available upon request.

**Operating Temperature:** - 40°C to + 125°C.

**Resistance to Solder Heat:** 260°C for 10 seconds.

### MATERIALS

**Core:** Ferrite.

**Wire:** Enamelled copper wire.

**Base:** LCP.

**Terminal:** Nickel bronze.

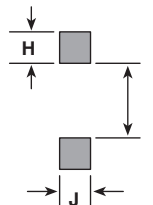
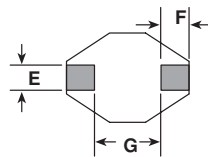
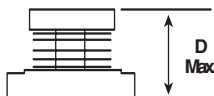
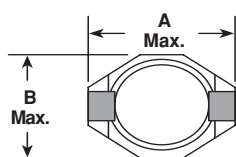
**Adhesive:** Epoxy resin.

### STANDARD ELECTRICAL SPECIFICATIONS

INDUCTANCE ( $\mu$ H)	TOLERANCE	TEST FREQUENCY L (KHz)	DCR MAXIMUM (Ohms)	I <sub>sat</sub> (Amps)	I <sub>rms</sub> (Amps)
1.0	± 20%	100	0.009	20.0	8.6
2.2	± 20%	100	0.014	16.0	7.1
3.3	± 20%	100	0.018	14.0	6.2
5.6	± 20%	100	0.020	12.0	5.3
10	± 20%	100	0.031	10.0	4.3
15	± 20%	100	0.036	8.0	4.0
22	± 20%	100	0.047	7.0	3.5
33	± 20%	100	0.066	5.5	3.0
47	± 20%	100	0.086	4.5	2.6
68	± 20%	100	0.13	3.5	2.3
100	± 20%	100	0.19	3.0	1.8
150	± 20%	100	0.25	2.6	1.5
220	± 20%	100	0.38	2.4	1.2
330	± 20%	100	0.56	1.9	1.0
470	± 20%	100	0.85	1.4	0.82
680	± 20%	100	1.1	1.2	0.72
1000	± 20%	100	1.8	1.0	0.56

Inductance drop = 10% typ. at I<sub>sat</sub>  
 $\Delta T = 40^\circ\text{C}$  typ. at I<sub>rms</sub>

### DIMENSIONS [in inches millimeters]

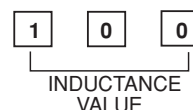
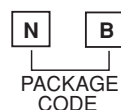
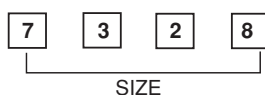


A (Max.)	B (Max.)	D (Max.)	E	F	G	H	I	J
0.730 [18.54]	0.600 [15.24]	0.280 [7.11]	0.100 [2.54]	0.100 [2.54]	0.500 [12.70]	0.115 [2.92]	0.490 [12.45]	0.110 [2.79]

### DESCRIPTION

IDC-7328	10 $\mu$ H	± 20%
MODEL	INDUCTANCE VALUE	INDUCTANCE TOLERANCE

### SAP PART NUMBERING GUIDELINES (INTERNAL)



See the end of this data book for conversion tables

www.DataSheet4U.com