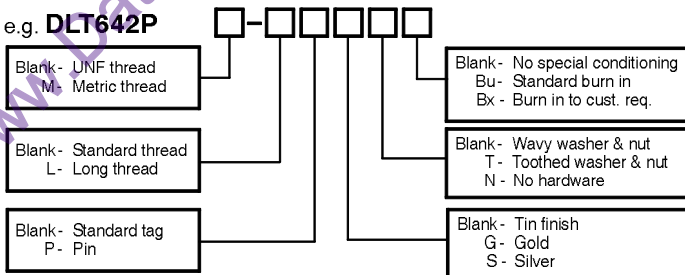


Panel Mounted L Circuit Filters

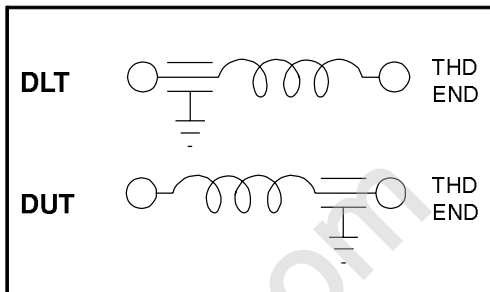
DLT, DUT

Ordering Information

e.g. **DLT642P**



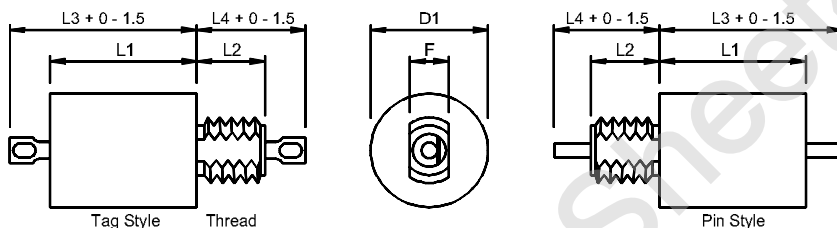
Circuit Diagrams



Environmental Classification 55/125/56 Hermetic
For Test Conditions see page 62

Case Dimensions

All dimensions maximum unless otherwise stated, in millimetres.



Voltage Rating

DLT# _ _ _ _			
#	-55°C to +85°C V d.c.	-55°C to +125°C V d.c.	-55°C to +125°C V a.c. 400 Hz
3	80	70	50
4	100	87	62
5	150	130	90
6	200	175	125
7	300	260	185
8	450	400	280
9	600	530	375

DLT _ # # _ _						Max Panel Thickness	
#	D1	L1	Tag L3	Pin L3	Mounting Style	Standard Thread	Long Thread
25	9.78	4.57	8.5	17.0	B or C	1.5	3.0
26	9.78	6.0	10.1	18.4	B or C	1.5	3.0
29	9.78	12.2	16.3	24.6	B or C	1.5	3.0
31	9.78	14.7	18.9	27.2	B or C	1.5	3.0
42	17.53	17.45	22.6	29.4	B or C	3.0	—

D1 Case Dia.	Thread		F Max.	L2 Max.		Tag L4		Pin L4		Tag Hole Nom.	Pin Dia Nom.
	UNF 2A	Metric		Std.	Long	Std.	Long	Std.	Long		
9.78	1/4"-28	M6x0.75	5.08	4.83	7.92	8.9	12.0	17.2	20.3	1.27x1.78	1.55
17.53	5/16"-24	M8x1.0	6.35	8.0	—	14	—	20	—	1.45x3.0	2.15

Characteristics

Part Number	Rated Current (Amps)	Typical Weight (g)	Nominal Cap. (µF)	Max Series R (Ω)	Min IR (MΩ)	Min. Insertion Loss (db) (50 Ω system)							
						15 kHz	30 kHz	100 kHz	150 kHz	300 kHz	1 MHz	10 MHz	1 GHz
DLT326P	15.0	3.5	1.4	0.005	100	-	14	25	27	34	44	54	70
DLT331A	0.06	8.0	1.4	5.0	100	-	25	44	52	65	70	70	70
DUT331A	0.06	8.0	1.4	5.0	100	-	25	44	52	65	70	70	70
DLT331G	0.5	8.5	1.4	0.6	100	-	17	35	42	53	70	70	70
DUT331G	0.5	8.5	1.4	0.6	100	-	17	35	42	53	70	70	70
DLT331H	1.0	8.5	1.4	0.25	100	-	15	28	34	45	65	70	70
DUT331H	1.0	8.5	1.4	0.25	100	-	15	28	34	45	65	70	70
DLT331K	3.0	8.5	1.4	0.06	100	-	14	25	28	35	51	70	70
DUT331K	3.0	8.5	1.4	0.06	100	-	14	25	28	35	51	70	70
DLT331M	5.0	8.5	1.4	0.015	100	-	14	24	28	34	45	65	70
DUT331M	5.0	8.5	1.4	0.015	100	-	14	24	28	34	45	65	70
DLT331N	10.0	8.5	1.4	0.005	100	-	14	24	28	34	44	58	70
DUT331N	10.0	8.5	1.4	0.005	100	-	14	24	28	34	44	58	70

Part Number	Rated Current (Amps)	Typical Weight (g)	Nominal Cap. (µF)	Max Series R (Ω)	Min IR (MΩ)	Min. Insertion Loss (db) (50 Ω system)							
						15 kHz	30 kHz	100 kHz	150 kHz	300 kHz	1 MHz	10 MHz	1 GHz
DLT425P	15.0	3.0	0.7	0.005	500	-	9	20	23	29	39	52	70
DLT426P	15.0	3.0	0.7	0.005	500	-	9	20	23	29	39	52	70
DLT429B	0.1	7.5	0.7	1.7	500	8	19	39	46	58	70	70	70
DUT429B	0.1	7.5	0.7	1.7	500	8	19	39	46	58	70	70	70
DLT429E	0.3	7.5	0.7	0.75	500	6	15	33	43	52	70	70	70
DUT429E	0.3	7.5	0.7	0.75	500	6	15	33	43	52	70	70	70
DLT429G	0.5	7.5	0.7	0.36	500	5	12	27	36	46	67	70	70
DUT429G	0.5	7.5	0.7	0.36	500	5	12	27	36	46	67	70	70
DLT429H	1.0	7.5	0.7	0.14	500	5	10	19	26	34	53	70	70
DUT429H	1.0	7.5	0.7	0.14	500	5	10	19	26	34	53	70	70
DLT429J	2.0	7.5	0.7	0.07	500	5	9	18	23	30	46	70	70
DUT429J	2.0	7.5	0.7	0.07	500	5	9	18	23	30	46	70	70
DLT429M	5.0	7.5	0.7	0.015	500	4	9	18	23	28	38	62	70
DUT429M	5.0	7.5	0.7	0.015	500	4	9	18	23	28	38	62	70
DLT431A	0.06	8.0	0.7	70.0	500	-	40	61	68	70	70	70	70
DUT431A	0.06	8.0	0.7	70.0	500	-	40	61	68	70	70	70	70
DLT431C	0.15	8.0	0.7	12.0	500	-	20	43	48	60	70	70	70
DUT431C	0.15	8.0	0.7	12.0	500	-	20	43	48	60	70	70	70
DLT431D	0.25	8.0	0.7	4.0	500	-	12	32	38	50	70	70	70
DUT431D	0.25	8.0	0.7	4.0	500	-	12	32	38	50	70	70	70
DLT431E	0.3	8.0	0.7	2.3	500	-	9	23	29	40	60	70	70
DUT431E	0.3	8.0	0.7	2.3	500	-	9	23	29	40	60	70	70
DLT431F	0.45	8.0	0.7	1.2	500	-	9	19	23	32	52	70	70
DUT431F	0.45	8.0	0.7	1.2	500	-	9	19	23	32	52	70	70
DLT431G	0.5	8.5	0.75	0.6	500	-	13	29	37	48	66	70	70
DUT431G	0.5	8.5	0.75	0.6	500	-	13	29	37	48	66	70	70
DLT431H	1.0	8.5	0.75	0.25	500	-	10	22	29	39	56	70	70
DUT431H	1.0	8.5	0.75	0.25	500	-	10	22	29	39	56	70	70
DLT431K	3.0	8.5	0.75	0.06	500	-	10	20	24	30	45	70	70
DUT431K	3.0	8.5	0.75	0.06	500	-	10	20	24	30	45	70	70
DLT431M	5.0	8.5	0.75	0.015	500	-	10	20	23	29	39	66	70
DUT431M	5.0	8.5	0.75	0.015	500	-	10	20	23	29	39	66	70
DLT431N	10.0	8.5	0.75	0.005	500	-	10	19	23	28	38	57	70
DUT431N	10.0	8.5	0.75	0.005	500	-	10	19	23	28	38	57	70
DLT526P	15.0	3.0	0.3	0.005	1000	-	4	12	16	21	31	48	70
DLT531G	0.5	8.5	0.6	1.5	400	-	11	29	35	47	65	70	70
DUT531G	0.5	8.5	0.6	1.5	400	-	11	29	35	47	65	70	70
DLT531H	1.0	8.5	0.6	0.25	400	-	10	22	27	36	57	70	70
DUT531H	1.0	8.5	0.6	0.25	400	-	10	22	27	36	57	70	70
DLT531K	3.0	8.5	0.6	0.06	400	-	9	19	22	29	44	65	70
DUT531K	3.0	8.5	0.6	0.06	400	-	9	19	22	29	44	65	70
DLT531M	5.0	8.5	0.6	0.015	400	-	7	15	20	26	37	65	70
DUT531M	5.0	8.5	0.6	0.015	400	-	7	15	20	26	37	65	70
DLT531N	10.0	8.5	0.6	0.005	400	-	5	12	17	21	31	48	70
DUT531N	10.0	8.5	0.6	0.005	400	-	5	12	17	21	31	48	70
DLT525P	15.0	2.5	0.3	0.005	1000	-	4	12	16	21	31	48	70
DLT625P	15.0	3.0	0.1	0.005	1000	-	-	5	8	13	23	38	60
DLT631G	0.5	8.5	0.2	0.6	500	-	-	18	25	38	58	70	70
DUT631G	0.5	8.5	0.2	0.6	500	-	-	18	25	38	58	70	70
DLT631H	1.0	8.5	0.2	0.25	500	-	-	12	19	29	48	70	70
DUT631H	1.0	8.5	0.2	0.25	500	-	-	12	19	29	48	70	70
DLT631K	3.0	8.5	0.2	0.06	500	-	-	9	13	17	33	65	70
DUT631K	3.0	8.5	0.2	0.06	500	-	-	9	13	17	33	65	70
DLT631M	5.0	8.5	0.2	0.015	500	-	-	9	13	17	28	61	70
DUT631M	5.0	8.5	0.2	0.015	500	-	-	9	13	17	28	61	70
DLT631N	10.0	8.5	0.2	0.005	500	-	-	9	13	17	27	44	70
DUT631N	10.0	8.5	0.2	0.005	500	-	-	9	13	17	27	44	70
DLT726P	15.0	3.5	0.06	0.005	1000	-	-	2	4	8	18	33	50
DLT726P1	15.0	5.0	0.1	0.005	1000	-	-	3	6	11	21	35	55
DLT731G	0.5	8.5	0.12	0.5	500	-	-	15	22	33	54	70	70

Part Number	Rated Current (Amps)	Typical Weight (g)	NominalCap. (µF)	Max Series R (Ω)	Min IR (MΩ)	Min. Insertion Loss (db) (50 Ω system)							
						15 kHz	30 kHz	100 kHz	150 kHz	300 kHz	1 MHz	10 MHz	1 GHz
DUT731G	0.5	8.5	0.12	0.5	500	-	-	15	22	33	54	70	70
DLT731H	1.0	8.5	0.12	0.5	500	-	-	8	14	25	45	70	70
DUT731H	1.0	8.5	0.12	0.5	500	-	-	8	14	25	45	70	70
DLT731K	3.0	8.5	0.12	0.05	500	-	-	6	9	15	30	61	70
DUT731K	3.0	8.5	0.12	0.05	500	-	-	6	9	15	30	61	70
DLT731M	5.0	8.5	0.12	0.02	500	-	-	6	9	14	25	51	70
DUT731M	5.0	8.5	0.12	0.02	500	-	-	6	9	14	25	51	70
DLT731N	10.0	8.5	0.12	0.005	500	-	-	6	9	14	24	42	70
DUT731N	10.0	8.5	0.12	0.005	500	-	-	6	9	14	24	42	70
DLT826P	15.0	5.0	0.02	0.005	1000	-	-	-	-	-	9	23	40
DLT831G	0.5	8.5	0.04	2.0	500	-	-	7	13	24	45	60	70
DUT831G	0.5	8.5	0.04	2.0	500	-	-	7	13	24	45	60	70
DLT831H	1.0	8.5	0.04	0.5	500	-	-	-	5	15	35	67	70
DUT831H	1.0	8.5	0.04	0.5	500	-	-	-	5	15	35	67	70
DLT831K	3.0	8.5	0.04	0.05	500	-	-	-	-	9	28	61	70
DUT831K	3.0	8.5	0.04	0.05	500	-	-	-	-	9	28	61	70
DLT831M	5.0	8.5	0.04	0.02	500	-	-	-	-	5	17	45	70
DUT831M	5.0	8.5	0.04	0.02	500	-	-	-	-	5	17	45	70
DLT831N	10.0	8.5	0.04	0.005	500	-	-	-	-	5	15	33	70
DUT831N	10.0	8.5	0.04	0.005	500	-	-	-	-	5	15	33	70
DLT926P	15.0	5.0	0.02	0.005	1000	-	-	-	-	-	5	19	40
DLT931G	0.5	8.5	0.02	2.0	500	-	-	5	10	20	41	56	70
DUT931G	0.5	8.5	0.02	2.0	500	-	-	5	10	20	41	56	70
DLT931H	1.0	8.5	0.02	0.5	500	-	-	-	-	11	31	63	70
DUT931H	1.0	8.5	0.02	0.5	500	-	-	-	-	11	31	63	70
DLT931K	3.0	8.5	0.02	0.05	500	-	-	-	-	2	16	47	70
DUT931K	3.0	8.5	0.02	0.05	500	-	-	-	-	2	16	47	70
DLT931M	5.0	8.5	0.02	0.02	500	-	-	-	-	2	11	37	70
DUT931M	5.0	8.5	0.02	0.02	500	-	-	-	-	2	11	37	70
DLT931N	10.0	8.5	0.02	0.005	500	-	-	-	-	2	11	30	70
DUT931N	10.0	8.5	0.02	0.005	500	-	-	-	-	2	11	30	70
DLT931G2	0.5	8.5	0.01	2.0	1000	-	-	3	6	14	32	45	70
DUT931G2	0.5	8.5	0.01	2.0	1000	-	-	3	6	14	32	45	70
DLT931H2	1.0	8.5	0.01	0.5	1000	-	-	-	-	5	22	50	70
DUT931H2	1.0	8.5	0.01	0.5	1000	-	-	-	-	5	22	50	70
DLT931K2	3.0	8.5	0.01	0.05	1000	-	-	-	-	-	7	43	70
DUT931K2	3.0	8.5	0.01	0.05	1000	-	-	-	-	-	7	43	70
DLT931M2	5.0	8.5	0.01	0.02	1000	-	-	-	-	-	3	31	70
DUT931M2	5.0	8.5	0.01	0.02	1000	-	-	-	-	-	3	31	70
DLT931N2	10.0	8.5	0.01	0.005	1000	-	-	-	-	-	3	22	70
DUT931N2	10.0	8.5	0.01	0.005	1000	-	-	-	-	-	3	22	70
DUT342G	0.5	16	3.0	0.3	100	-	25	45	52	63	70	70	70
DLT342G	0.5	16	3.0	0.3	100	-	25	45	52	63	70	70	70
DUT342H	1.0	16	3.0	0.21	100	-	23	41	48	60	70	70	70
DLT342H	1.0	16	3.0	0.21	100	-	23	41	48	60	70	70	70
DUT342K	3.0	16	3.0	0.03	100	-	20	31	35	42	60	70	70
DLT342K	3.0	16	3.0	0.03	100	-	20	31	35	42	60	70	70
DUT342M	5.0	16	3.0	0.03	100	-	20	31	34	41	56	70	70
DLT342M	5.0	16	3.0	0.03	100	-	20	31	34	41	56	70	70
DUT342N	10.0	16	3.0	0.005	100	-	20	28	35	41	51	60	70
DLT342N	10.0	16	3.0	0.005	100	-	20	28	35	41	51	60	70
DUT542G	0.5	16	1.4	0.3	300	-	20	40	48	58	70	70	70
DLT542G	0.5	16	1.4	0.3	300	-	20	40	48	58	70	70	70
DUT542H	1.0	16	1.4	0.21	300	-	18	37	44	56	70	70	70
DLT542H	1.0	16	1.4	0.21	300	-	18	37	44	56	70	70	70
DUT542K	3.0	16	1.4	0.03	300	-	14	25	29	37	55	70	70
DLT542K	3.0	16	1.4	0.03	300	-	14	25	29	37	55	70	70
DUT542M	5.0	16	1.4	0.02	300	-	14	24	28	34	47	70	70
DLT542M	5.0	16	1.4	0.02	300	-	14	24	28	34	47	70	70
DUT542N	10.0	16	1.4	0.005	300	-	14	24	27	33	44	60	70

Part Number	Rated Current (Amps)	Typical Weight (g)	Nominal Cap. (µF)	Max Series R (Ω)	Min IR (MΩ)	Min. Insertion Loss (db) (50 Ω system)							
						15 kHz	30 kHz	100 kHz	150 kHz	300 kHz	1 MHz	10 MHz	1 GHz
DLT542N	10.0	16	1.4	0.005	300	-	14	24	27	33	44	60	70
DUT642G	0.5	16	0.45	0.3	500	-	10	30	37	48	68	70	70
DLT642G	0.5	16	0.45	0.3	500	-	10	30	37	48	68	70	70
DUT642H	1.0	16	0.45	0.21	500	-	8	27	33	45	65	70	70
DLT642H	1.0	16	0.45	0.21	500	-	8	27	33	45	65	70	70
DUT642K	3.0	16	0.45	0.03	500	-	5	15	19	27	45	70	70
DLT642K	3.0	16	0.45	0.03	500	-	5	15	19	27	45	70	70
DUT642M	5.0	16	0.45	0.02	500	-	6	16	18	24	36	70	70
DLT642M	5.0	16	0.45	0.02	500	-	6	16	18	24	36	70	70
DUT642N	10.0	16	0.8	0.005	250	-	9	19	22	28	39	60	70
DLT642N	10.0	16	0.8	0.005	250	-	9	19	22	28	39	60	70
DUT742G	0.5	16	0.25	0.3	1000	-	5	25	32	43	62	70	70
DLT742G	0.5	16	0.25	0.3	1000	-	5	25	32	43	62	70	70
DUT742H	1.0	16	0.25	0.21	1000	-	2	20	26	38	59	70	70
DLT742H	1.0	16	0.25	0.21	1000	-	2	20	26	38	59	70	70
DUT742K	3.0	16	0.25	0.03	1000	-	2	11	14	22	39	70	70
DLT742K	3.0	16	0.25	0.03	1000	-	2	11	14	22	39	70	70
DUT742M	5.0	16	0.25	0.02	1000	-	-	9	13	19	33	65	70
DLT742M	5.0	16	0.25	0.02	1000	-	-	9	13	19	33	65	70
DUT742N	10.0	16	0.25	0.005	1000	-	2	10	13	18	29	50	70
DLT742N	10.0	16	0.25	0.005	1000	-	2	10	13	18	29	50	70
DUT842G	0.5	16	0.12	0.3	1000	-	-	19	26	38	60	70	70
DLT842G	0.5	16	0.12	0.3	1000	-	-	19	26	38	60	70	70
DUT842H	1.0	16	0.12	0.21	1000	-	-	10	16	28	48	70	70
DLT842H	1.0	16	0.12	0.21	1000	-	-	10	16	28	48	70	70
DUT842K	3.0	16	0.12	0.03	1000	-	-	4	8	16	33	65	70
DLT842K	3.0	16	0.12	0.03	1000	-	-	4	8	16	33	65	70
DUT842M	5.0	16	0.12	0.01	1000	-	-	4	7	13	27	60	70
DLT842M	5.0	16	0.12	0.01	1000	-	-	4	7	13	27	60	70
DUT842N	10.0	16	0.12	0.005	1000	-	-	4	7	13	23	48	70
DLT842N	10.0	16	0.12	0.005	1000	-	-	4	7	13	23	48	70
DUT942G	0.5	16	0.07	0.3	1200	-	-	14	21	33	55	60	70
DLT942G	0.5	16	0.07	0.3	1200	-	-	14	21	33	55	60	70
DUT942H	1.0	16	0.07	0.21	1200	-	-	9	16	27	48	60	70
DLT942H	1.0	16	0.07	0.21	1200	-	-	9	16	27	48	60	70
DUT942K	3.0	16	0.07	0.03	1200	-	-	-	3	10	28	64	70
DLT942K	3.0	16	0.07	0.03	1200	-	-	-	3	10	28	64	70
DUT942M	5.0	16	0.07	0.01	1200	-	-	-	-	9	22	55	70
DLT942M	5.0	16	0.07	0.01	1200	-	-	-	-	9	22	55	70
DUT942N	10.0	16	0.07	0.005	1200	-	-	-	-	7	18	43	60
DLT942N	10.0	16	0.07	0.005	1200	-	-	-	-	7	18	43	60