

Crystal filter

QF21.4-0050/06



Application

- 6 pol filter
- i.f.- filter
- use in mobile and stationary transceivers

Limiting values		Unit	Value
Nominal frequency	f_0	MHz	21.4
Centre frequency	f_c	MHz	21.4 ± 250 Hz
	f_c at 25°C	MHz	21.4 ± 150 Hz
Insertion loss		dB	≤ 15.0
Pass band at 6.0 dB		kHz	$\pm \geq 0.25$
Ripple in pass band	$f_0 \pm 0.15$ kHz	dB	≤ 2.0
Stop band attenuation	$f_0 \pm 1$ kHz	dB	≥ 60
Alternate attenuation	$f_0 \pm 2 \dots 5000$ kHz	dB	> 90 except spurious
Spurious response		dB	> 85
Return loss	$f_0 \pm 0.15$	dB	> 10
IP3 at 0 dBm power level	$f_0 \pm 1$ kHz; $f_0 \pm 2$ kHz	dBm	> 25

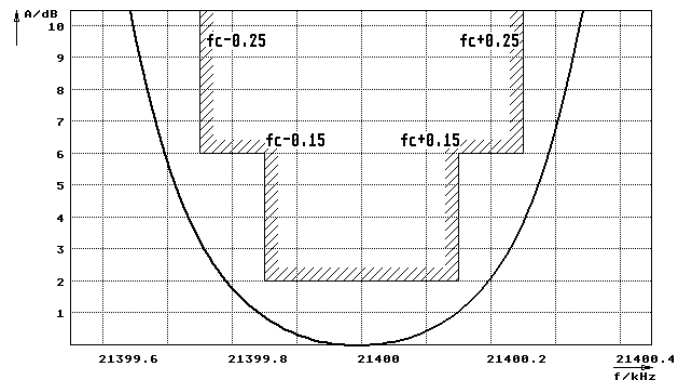
Terminating impedance Z

R1 C1	Ohm/pF	50 0
R2 C2	Ohm/pF	50 0

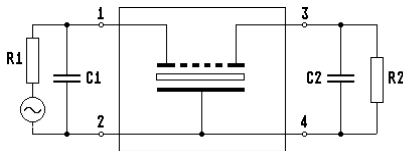
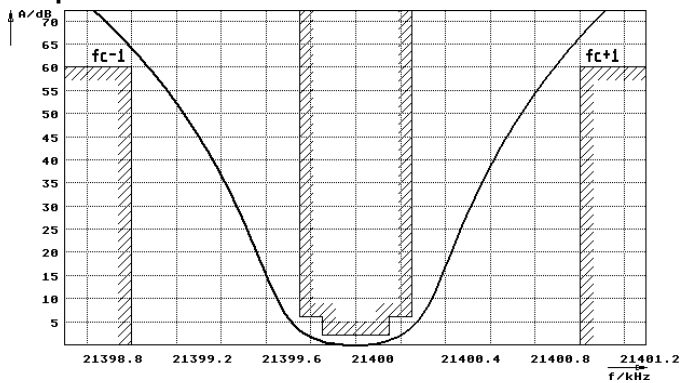
Operating temp. range ° C -10... +70

Characteristics QF21.4-0050/06

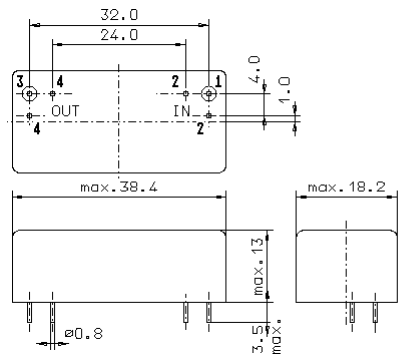
Pass band



Stop band



- Pin connections:
- 1 Input
 - 2 Ground-Input
 - 3 Output
 - 4 Ground-Output



GM17