

**P/N: 24ST0028AP DATA SHEET**

Page : 1/1

**Feature**

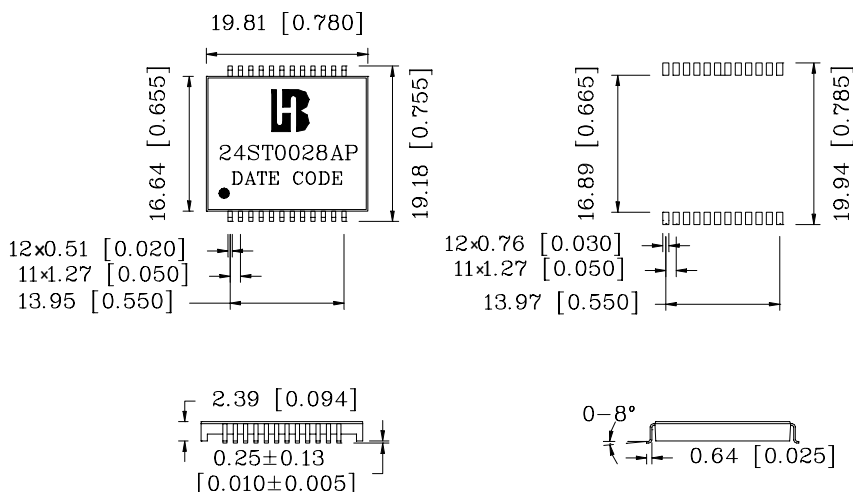
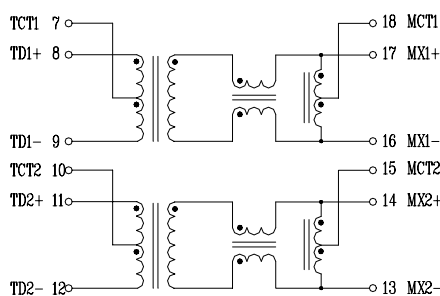
- Designed to meet IEEE802.3u Requirement.
- Low profile package 2.39mm for PC card.
- Operating temperature range: 0 to +70 .
- Storage temperature range: -25 to +125 .

**Electrical Specifications @ 25°C**

Part Number	Turn Ratio ( $\pm 5\%$ )		OCL (uH Min) @100KHz/0.1V with 8mA DC Bias 350	CMR (dB Min)		
	TX	RX		30MHz	50MHz	100MHz
24ST0028AP	1CT: 1	1CT: 1		-42	-37	-33

**Continue**

Part Number	Insertion Loss (dB Max) 1-100MHz	Return Loss (dB Min)@ Load 100Ω			HI-POT (Vrms) 1500
		30MHz	60MHz	80MHz	
24ST0028AP	-1.1	-20	-14	-11.5	

**Schematic****Mechanical**

Units: mm [inches] tolerance: xx.x0±0.25 [0.010]  
0.xx±0.05 [0.002]