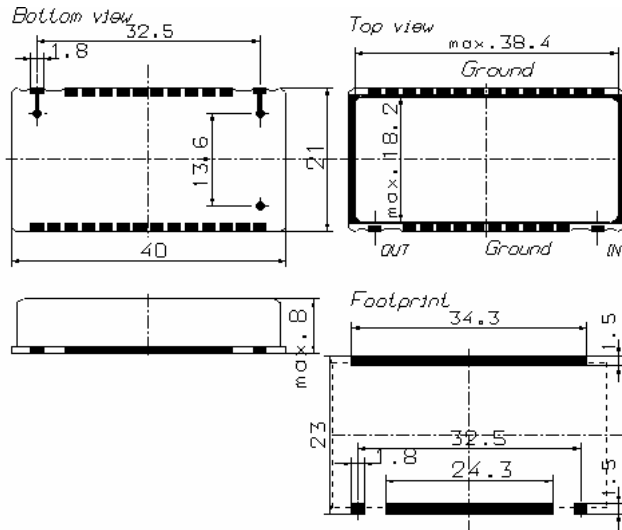


Specification for monolithic crystal filter:

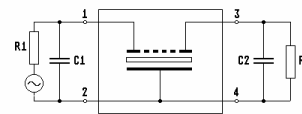
MQF 35.25 - 2600/06

1. General

1.1. Case:



GS14



- 1.2. Type name: MQF 35.25-2600/06
- 1.3. Number of poles: 10
- 1.4. Operating temperature range: -20°C to +70°C
- 1.5. Storage temperature range: -45°C to +85°C

2. Electric values

- 2.1. Nominal centre frequency f_0 : 35.25 MHz
- 2.2. **Pass band**
 - 2.2.1. Centre frequency f_c : 35.25 MHz \pm 1.5 kHz
 - 2.2.2. Bandwidth between 6 dB - frequencies: $\geq f_c \pm 13$ kHz
 - 2.2.3. Ripple: ≤ 1.0 dB at $f_c \pm 8.0$ kHz
 - 2.2.4. Insertion loss: ≤ 5.0 dB
(measured on smallest attenuation in pass band)
- 2.3. **Stop band**
 - 2.3.1. $f_c \pm 25$ kHz..... ± 5 MHz ≥ 80 dB
 - 2.3.2. Alternate attenuation: ≥ 80 dB
- 2.4. Terminating impedance (input and output): 50 Ω // 0 pF
- 3. Marking on the case: manufacturer, date code
MQF 35.25-2600/06
- 4. Environment conditions: Corresponding to Telefilter CF001

Edited by: _____ date: _____ name: _____