

PLEASE CHECK WWW.MOLEX.COM FOR LATEST PART INFORMATION

Part Number: [5023070113](#)
Status: **Active**
Overview: [ctx crimp terminals](#)
Description: CTX150 Female Terminal, Tin (Sn), 14-16 AWG D-Wind, Left Payoff, Grip Code L

Documents:

[Drawing \(PDF\)](#) [RoHS Certificate of Compliance \(PDF\)](#)

General

Product Family Crimp Terminals
 Series [502307](#)
 Crimp Quality Equipment Yes
 Overview [ctx crimp terminals](#)
 Product Name CTX150

Physical

Durability (mating cycles max) 10
 Gender Female
 Material - Metal Copper Alloy
 Material - Plating Mating Tin
 Material - Plating Termination Nickel
 Packaging Type Reel
 Termination Interface: Style Crimp or Compression
 Wire Insulation Diameter 2.80mm
 Wire Size AWG 14, 16
 Wire Size mm² 1.50-2.00

Electrical

Current - Maximum per Contact 15A
 Voltage - Maximum 250V

Material Info

Reference - Drawing Numbers

Packaging Specification PK-31301-053

EU RoHS

**ELV and RoHS
Compliant**

REACH SVHC

Not Reviewed

Halogen-Free

Status

Not Reviewed

China RoHS



**Need more information on product
environmental compliance?**

Email productcompliance@molex.com
 For a multiple part number RoHS Certificate of
 Compliance, [click here](#)

Please visit the [Contact Us](#) section for any
 non-product compliance questions.

Search Parts in this Series

[502307Series](#)

Application Tooling | FAQ

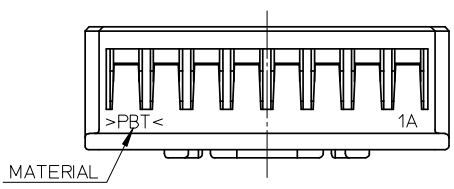
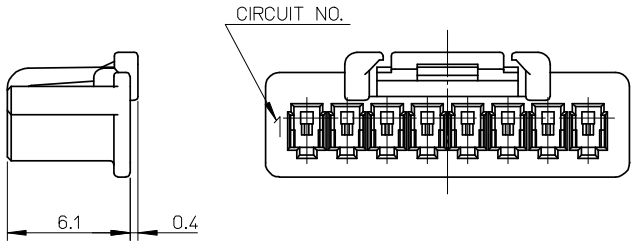
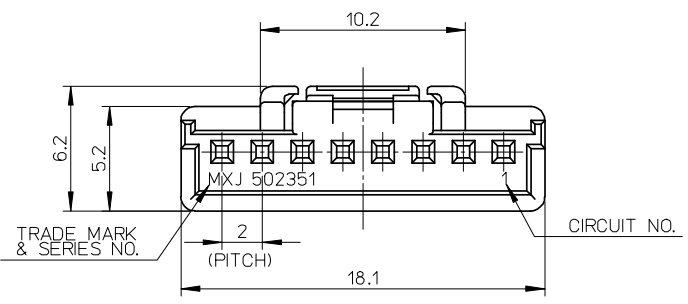
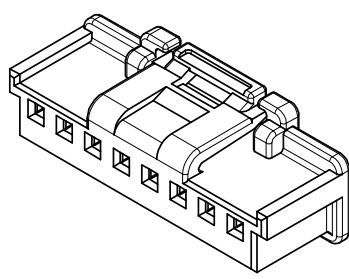
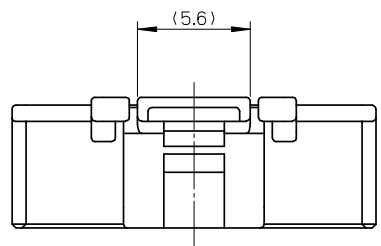
*Tooling specifications and manuals are
found by selecting the products below.
Crimp Height Specifications are then
contained in the Application Tooling
Specification document.*

Global

Description	Product #
Extraction Tool for CTX150 Receptacle Crimp Terminal	0638134400
Hand Crimp Tool for CTX 1.50mm Receptacle Terminal, 1.25, 1.50, and 2.00mm ²	0638194100
FineAdjust™ Applicator for CTX150 Receptacle Terminals, 1.25mm, 1.50mm & 2.0mm	0639010600

NOTES

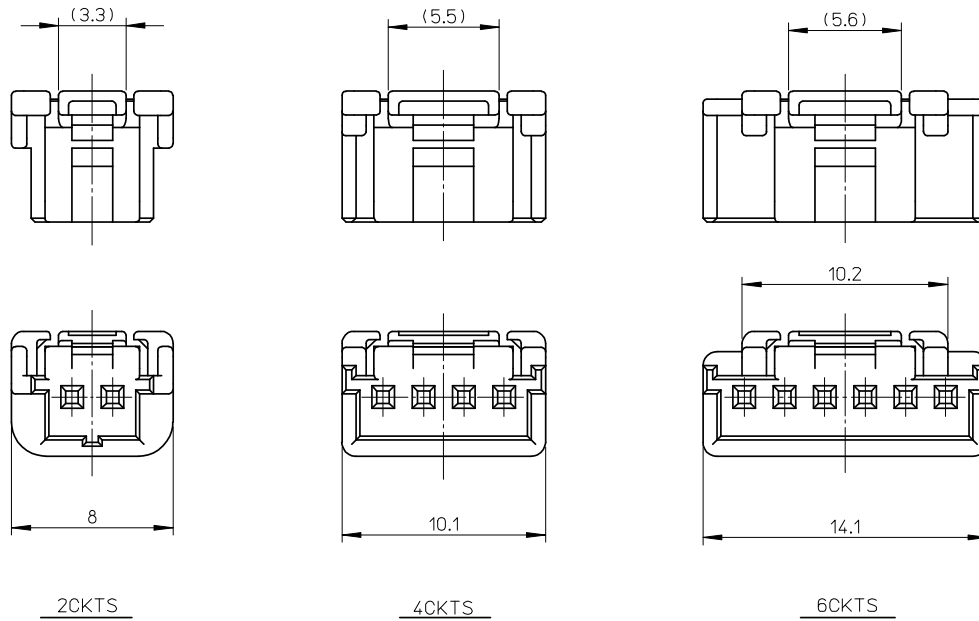
- 1. 材質: PBT
MATERIAL: PBT
- 2. 色: 白
COLOR: WHITE
- 3. 適合端子: 50212, 50372シリーズ
APPLICABLE TERMINAL: 50212, 50372 SERIES
- 4. 嵌合相手: 502352シリーズ
MATES WITH: 502352 SERIES
- 5. ELV及びRoHS適合品
ELV AND RoHS COMPLIANT



8CKTS

502351-0800	8
502351-0600	6
502351-0400	4
502351-0200	2
MATERIAL NO.	CKTS

RELEASED EC NO: JTR2008-0007 DRWN: SHSHIBATA 2008/01/23 CHKD: HKOMATSU 2008/01/23 APPR: AKANESHIGE 2008/01/23	GENERAL TOLERANCES (UNLESS SPECIFIED)		DIMENSION STYLE MM ONLY	SCALE 4:1	DESIGN UNITS METRIC	THIRD ANGLE PROJECTION
	10 UNDER	±0.20	DRAWN BY SHSHIBATA	DATE 2007/12/18	TITLE 2.0MM PITCH WIRE TO BOARD CONN. RECEPTACLE HOUSING MOLEX INCORPORATED DOCUMENT NO. SD-502351-001 SHEET NO. 1 OF 2	
	10 OVER 30 UNDER	±0.25	CHECKED BY HKOMATSU	DATE 2007/12/18		
	30 OVER	±0.30	APPROVED BY AKANESHIGE	DATE 2007/12/18		
ANGULAR ±3 °		MATERIAL NO.	SEE CHART			
DRAFT WHERE APPLICABLE MUST REMAIN WITHIN DIMENSIONS		SIZE A3		THIS DRAWING CONTAINS INFORMATION THAT IS PROPRIETARY TO MOLEX INCORPORATED AND SHOULD NOT BE USED WITHOUT WRITTEN PERMISSION		



RELEASED EC NO: JTR2008-0007 DRWN: SHIBATA 2008/01/23 CHK'D: KOMATSU 2008/01/23 APPR: AKANESHIGE 2008/01/23	GENERAL TOLERANCES (UNLESS SPECIFIED)		DIMENSION STYLE MM ONLY		SCALE 4:1	DESIGN UNITS METRIC	THIRD ANGLE PROJECTION	
	10 UNDER	±0.20	DRAWN BY SHSHIBATA	DATE 2007/12/18	TITLE 2.0MM PITCH WIRE TO BOARD CONN. RECEPTACLE HOUSING			
	10 OVER 30 UNDER	±0.25	CHECKED BY HKOMATSU	DATE 2007/12/18				
	30 OVER	±0.30	APPROVED BY AKANESHIGE	DATE 2007/12/18	MOLEX INCORPORATED			
ANGULAR ±3 °		MATERIAL NO.		DOCUMENT NO.				
DRAFT WHERE APPLICABLE MUST REMAIN WITHIN DIMENSIONS		SEE CHART		SD-502351-001		2 OF 2		
O		A3		THIS DRAWING CONTAINS INFORMATION THAT IS PROPRIETARY TO MOLEX INCORPORATED AND SHOULD NOT BE USED WITHOUT WRITTEN PERMISSION				