

Monolithic crystal filter

MQF70.455-4000/07



Application

- 4 pol filter
- i.f.- filter
- use in mobile and stationary transceivers

Limiting values

		Unit	Value
Nominal frequency	f_0	MHz	70.455
Insertion loss		dB	< 6.0
Pass band at 3.0dB		kHz	$\pm > 20$
Ripple in pass band	$f_0 \pm 10$ kHz	dB	< 1.0
Stop band attenuation	$f_0 \pm 75$ kHz	dB	> 40
Alternate attenuation	$f_0 \pm 455$ kHz	dB	> 60
	$f_0 \pm 825 \dots 925$ kHz	dB	> 60
Spurious response		dB	> 15
Group delay distortion	$f_0 \pm 4$ kHz	μ s	< 15
Nominal drive level		dBm	< 0
Maximal drive level		dBm	15

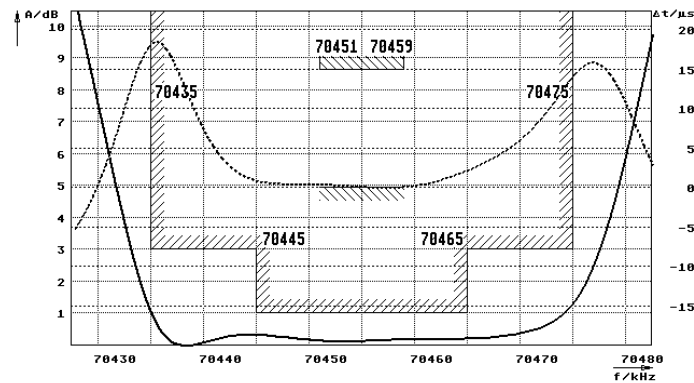
Terminating impedance Z

R1 C1	Ohm/pF	50 0
R2 C2	Ohm/pF	50 0

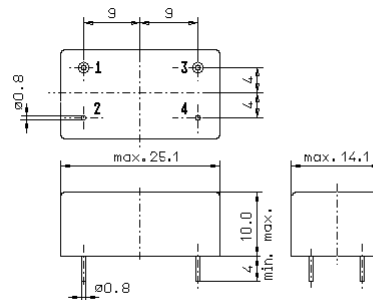
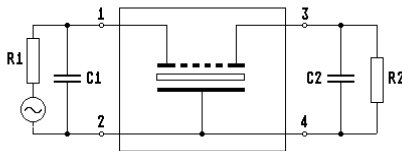
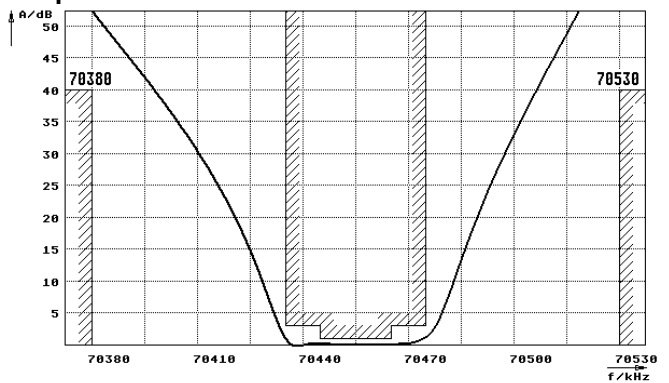
Operating temp. range	$^{\circ}$ C	-20... +70
Operable temp. range	$^{\circ}$ C	-40... +85

Characteristics MQF70.455-4000/07

Pass band



Stop band



GM3

- Pin connections:
- | | |
|---|---------------|
| 1 | Input |
| 2 | Ground-Input |
| 3 | Output |
| 4 | Ground-Output |