

Monolithic crystal filter

MQF21.4-0750/02



Application

- 4 pol filter
- i.f.- filter
- use in mobile and stationary transceivers

Limiting values

		Unit	Value
Nominal frequency	f_0	MHz	21.4
Insertion loss		dB	< 2.5
Pass band at 3.0dB		kHz	$\pm > 3.75$
Ripple in pass band	$f_0 \pm 3 \text{ kHz}$	dB	< 1.0
Stop band attenuation	$f_0 \pm 14 \text{ kHz}$	dB	> 40 except spurious
Alternate attenuation	$f_0 \pm 350 \text{ kHz}$	dB	> 60 except spurious

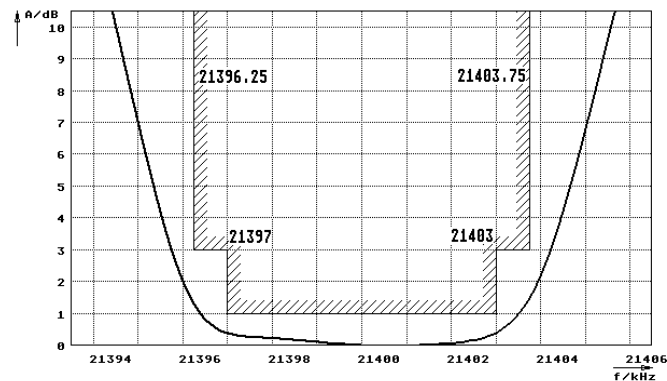
Terminating impedance Z

R1 C1		Ohm/pF	1500 2
R2 C2		Ohm/pF	1500 2
Coupling capacitance	Ck	pF	10.0

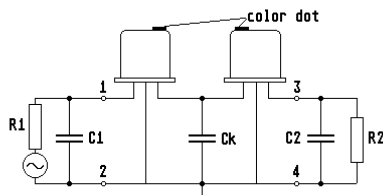
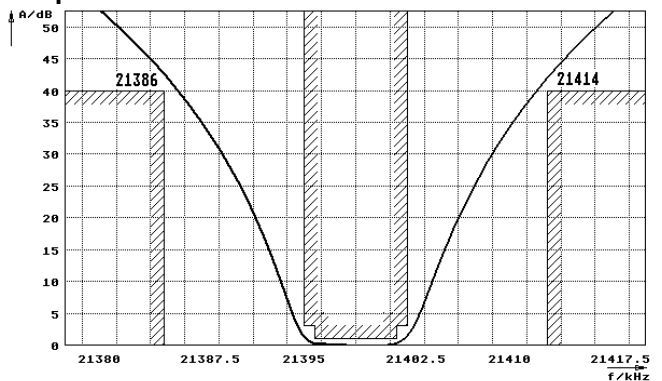
Operating temp. range		°C	-20... +70
Storage temp. range		°C	-45... +85
Environment conditions			according to CF001

Characteristics MQF21.4-0750/02

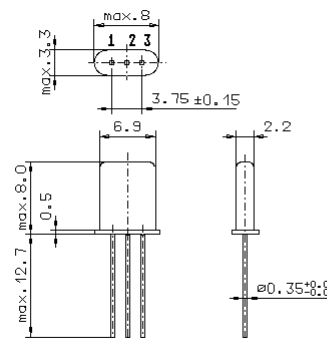
Pass band



Stop band



- Pin connections:
- 1 Input
 - 2 Ground
 - 3 Output
 - 4 Ground



GH9

RoHS compliant